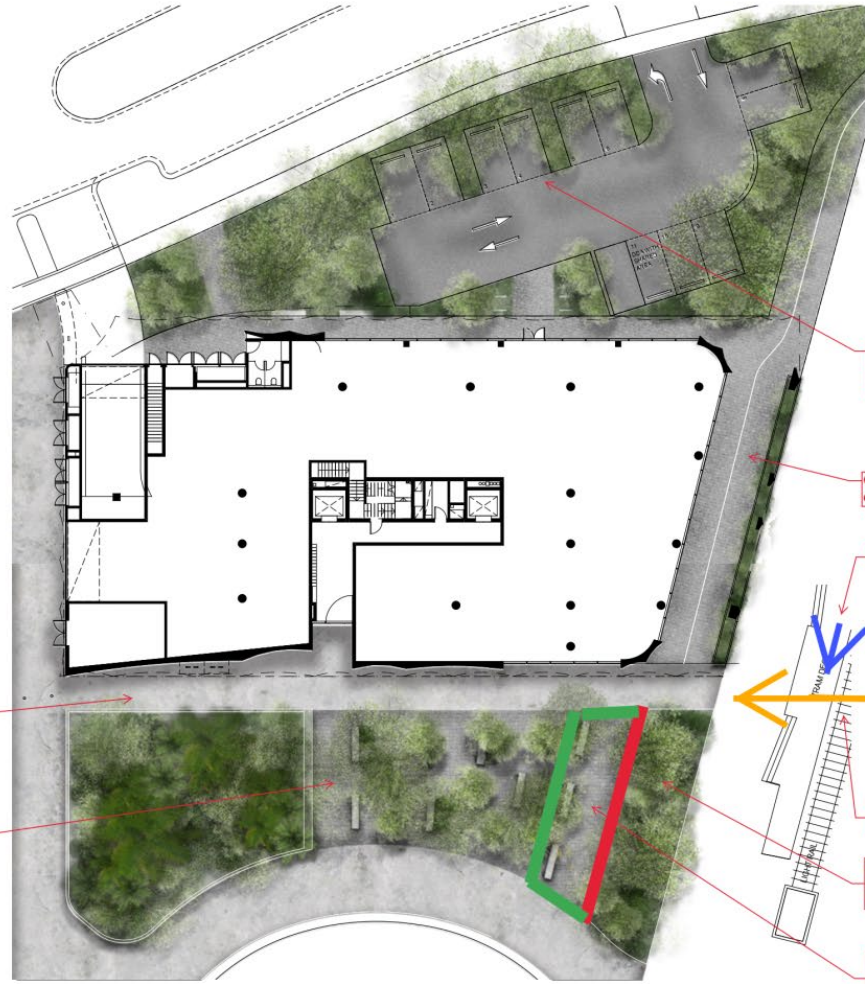


3.6

LUXCON PROPOSAL - LANDSCAPE CONCEPT PLAN

103 Beach Street Port Melbourne

Document Set ID: 6361263



All new / reinstated public realm paving (apart from seating area) to match existing Waterfront Place treatment

Mismatched stone paving to seating area only, no loose gravel.

Suggest reconfiguring to 2 groups of 3 parking bays, with single landscape buffer. This should reduce overall amount of hard paving by reducing car parking aisle length by approximate 1.5m.

Cobbled paving has create accessibility problems for many people. Prefer concrete paving to match existing Waterfront Plaza treatment.

Approximate location of redeveloped tram terminus central platform

Future east-west pedestrian desire line, following redevelopment of Tram Terminus and 1-7 Waterfront Place.

This area to east of red line is outside of scope for new planting as it will be incorporated into future Tram Terminus Redevelopment works. As an interim measure, install concrete paving to match existing plaza pattern.

Move proposed planter bed west (to other side of red line). This will reduce at least one row of seating but will still provide plenty of space for a generous, well-defined seating area.

car

25