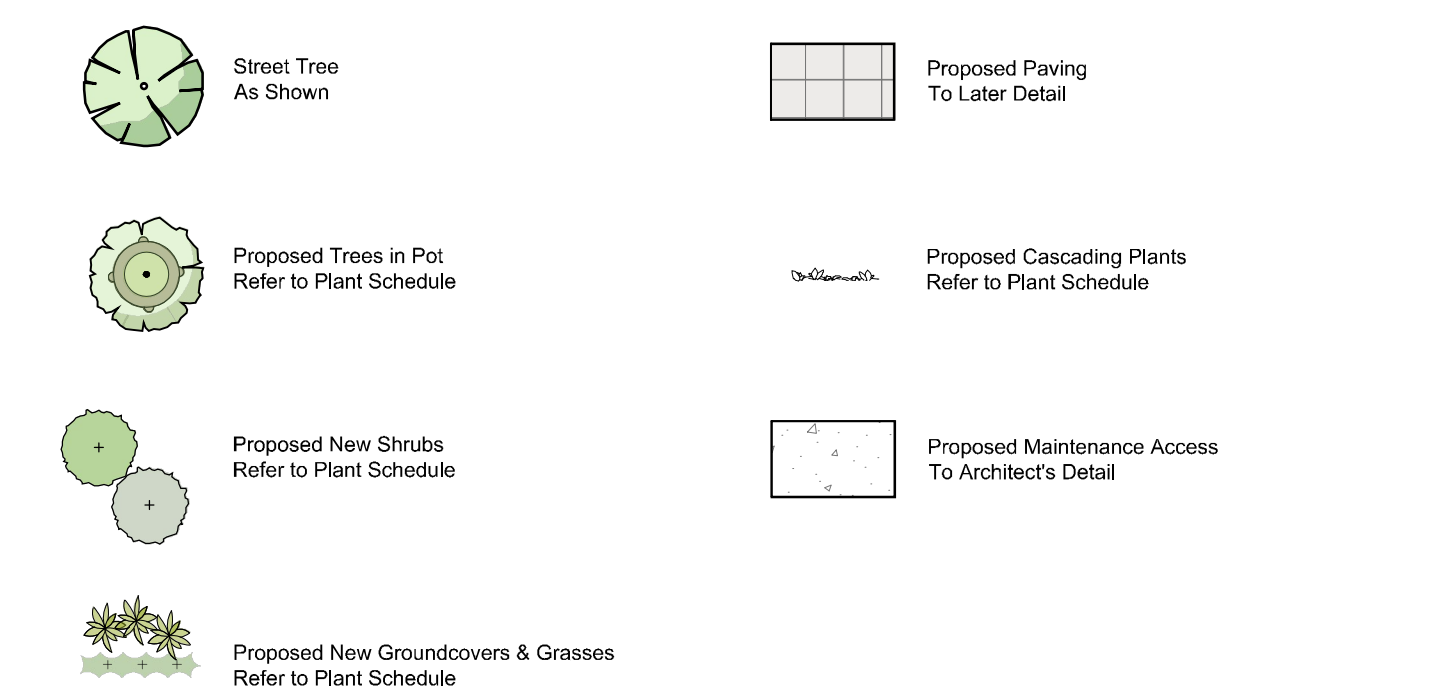


TP 01 PROPOSED FIFTH FLOOR LANDSCAPE PLAN
Scale: 1:100
LEGEND



PLANT SCHEDULE

SYM	BOTANICAL NAME	COMMON NAME	D/E/Ex	HEIGHT X WIDTH AT MATURITY	MIN SUPPLY SIZE	QTY
OeA	<i>Olea europaea</i> 'Arbequina'	Spanish Arbequina Olive	E/Ex	4 x 4m	1.5mH	10
SHRUBS						
Lb	<i>Leucophyta brownii</i>	Cushion Bush	E/N	0.8 x 0.8m	140mm pot	To Later Detail
ROP	<i>Rhaphiolepis indica</i> 'Oriental Pearl'	Oriental Pearl Indian Hawthorn	E/Ex	1 x 1m	140mm pot	
Sr	<i>Sarcococca ruscifolia</i>	Fragrant Sweet Box	E/Ex	1.5 x 1.5m	140mm pot	
WGB	<i>Westringia</i> 'Grey Box'	Native Box	E/N	0.3-0.5 x 0.3-0.5m	140mm pot	
TOTAL						
GROUNDCOVERS & CASCADING PLANTS						
Cs	<i>Convolvulus sabatius</i>	Moroccan Bellflower	E/Ex	0.3 x 1.5m	140mm pot	To Later Detail
Ps	<i>Poa sieberiana</i>	Grey Tussock Grass	E/N	0.5 x 0.5m	140mm pot	
Ta	<i>Trachelospermum asiaticum</i>	Yellow Star Jasmine	E/Ex	0.2 x Spreading	140mm pot	
TOTAL						

D/E = Deciduous/Evergreen N/Ex = Native/Exotic

SPECIFICATION NOTES

Soil Preparation
Any imported topsoil is to be free of weeds, rubble and other materials damaging to plant growth and is to be of a medium texture (sandy loam) with a pH of 6.0-7.0. Top soil is to be laid over a prepared sub-base which has had any materials damaging to plant growth (e.g. rubble and large rocks) removed, spread to the appropriate depth and cultivated into the existing site soil to a minimum depth of 150mm.

Weed Removal
All weeds shall be thoroughly removed. All vegetative material, including roots and rhizomes of non-woody perennials and woody suckering weeds, is to be removed or appropriately controlled using chemical means. The stumps of non-suckering woody perennials are to be stump ground. All vegetative material shall be appropriately disposed of off site in a manner which will not allow their re-establishment elsewhere. Any chemical controls are to be used in accordance with manufacturer's instructions and standard occupational health and safety procedures.

Care
Care must be taken to ensure that all trees to be retained are not damaged during weed removal. This also implies that any herbicides used are suitable for use around the vegetation to be retained.

Planting
Planting shall be carried out using accepted horticultural practices with all plants conforming to the species, size and quantities indicated on the Landscape Plan and Plant Schedule. Plants shall be thoroughly soaked through immersion in water prior to planting and if the planting soil is very dry then the planting hole is to be filled with water and allowed to drain completely.

All plants shall be appropriately hardened off in the nursery. Use plants with the following characteristics: Large healthy root systems with no evidence of root cut or pot bound restriction or damage, vigorous, well established, free from disease and pests and of good form, consistent with the species or variety.

Planting holes for shrubs and groundcovers are to be of minimum size 75mm larger than the planting pot in all directions. Semi-advanced tree planting holes are to be the same depth as the rootball and 2-3 times its diameter, with the top of the rootball being at grade. A 75mm high berm is to be constructed at edge of root-ball to hold water. All plants are to be thoroughly watered after planting and slow release fertiliser added at the quantities specified by the manufacturer.

Mulch
Mulch is to be supplied to all raised planters and is to be an organic type laid to a minimum depth of 75mm, consisting of fine dark coloured chipped or shredded pine bark or hardwood with not more than 5% fines content by volume (preferably zero fines). The average size of the woodchip must be approximately 10mm x 20mm x 5mm and the maximum length is not to exceed 30mm. Mulch shall be free of damaging matter such as soil, weeds and sticks and is to be stockpiled and thoroughly weathered prior to delivery. Mulch is to be kept back 100mm from the stems of all plants to prevent collar rot.

Irrigation
An approved drip irrigation system is to be supplied to all planter boxes & garden beds. It is the responsibility of the contractor to ensure that all irrigation meets manufacturers specifications. The system is to be connected to rainwater supply and include a rain shut off device. All dripline is to be buried with approx. 50mm of topsoil cover and shall be anchored at regular intervals to ensure the tubing cannot be dislodged.

Raised Planter Boxes
Raised planter construction is to include, but not necessarily be limited to, the supply and installation of agricultural drains, drainage cells at base, filter fabric, planting medium, mulch and irrigation. Planter boxes must be effectively tanked and lined with coreflute to prevent leaking.

Drainage cells are to be provided at the base of the planter and are to be covered with a layer of filter fabric. A drainage outlet is to be installed in the base of the planter with the floor of the planter sloped towards it. Provide a root anchor if trees are to be planted in a windy location.

Supply and spread evenly a special lightweight planter mix. (to be advised) Compact evenly in 100mm layers. Avoid differential subsidence and excess compaction and produce a finished surface that is graded evenly and ready for planting. Allow for 50mm layer of specified mulch to top of beds and a finished level 25-50mm below the planter rim. Drip irrigation as specified is to be installed beneath the mulch layer.

Plant Establishment Period
There shall be a 13 weeks Plant Establishment Period following the approval of Practical Completion by the responsible authority. During this period the landscape contractor shall make good all defects in his/her scope of works. Maintenance and Establishment means the care and maintenance of the contract area by accepted horticultural practices, as well as rectifying any defects that become apparent in the work under normal use. This shall include, but shall not be limited to watering, fertilising, weeding, pruning, pest and disease control, cultivation, re-staking and replacement of any plants that fail with plants of the same species and size.

