

Historical highlights

These historic Gardens have their origins at the very beginning of St Kilda. In November 1859, only two years after the first Council elections (1857), the St Kilda Council, wishing to beautify the rapidly developing suburb, voted to set aside these 16 acres of land for the purpose of a Botanical Garden. Mr Tilman Gloystein won the design competition. His formal setting of a North-South path axis leading to a central layout of garden beds, has been maintained ever since.

As consultant to the Planting Committee, the Director of the Royal Botanic Gardens, Baron von Mueller contributed several hundred plants, shrubs and trees (many of the Pines, Cyresses and Moreton Bay Figs still stand today). A large 'Floral and Musical Fete' officially opened the Gardens in November 1861.

A six foot high picket fence enclosed the Garden; this was later replaced by a cypress hedge.

As the gardens were being laid out, red gravel was discovered in the south-east corner and used on local roads. When exhausted, the excavation was filled with municipal rubbish; the pit was not closed until 1900. This section of the gardens lay undeveloped until the 1920s.

In 1950 the Alister Clark Memorial Rose Garden was created. Rebuilt in 1985 as a sunken garden, it is the largest garden in Australia to pay tribute to this famous rosarian.

Over the years the Gardens have had many features, e.g. an aviary, birdbath, statuary, fountain, lily pond, flowered archway; all reflecting the changing tastes of the time.

Major developments occurred in the 1890, 1950, 1985, 2003, 2010 - a year that saw the installation of four new specially commissioned gates, 2012 when the fifth gate was installed, 2016-2019 when the fences were replaced. Each gate is different and highlights features nearby.

Despite the changes these beautiful gardens, registered with Heritage Victoria, retain their essential nineteenth century feel and layout.

Horticulture

The St Kilda Botanical Gardens are recognised by Heritage Victoria for their cultural heritage significance as one of Victoria's earliest botanical gardens. The Gardens contain 810 mature tree specimens eight of which are on the significant tree register.

The Gardens display a great diversity of native and exotic plants.

In the 1950s the Alister Clark Rose Garden was established and a Sub-Tropical Rain-forest conservatory added in the early 1990s. Seasonal displays, specialist beds and local indigenous plants provide a valuable collection to study or sit alongside enjoying a picnic.

Educational features

- Two historic glasshouses housing the Friends of St Kilda Botanical Gardens
- Local native species trail along Herbert Street
- Sub-tropical rainforest conservatory
- Alister Clark Rose Garden
- Eco-centre

The Friends program and facilities include:

- guided walks, lectures and talks
- the Friends nursery (in the historical glasshouses)
- fund-raising plant sales
- Special Gardens-focused events
- Two specialist beds - Friends bed around the Levy Pavilion and Bromeliad bed

For further information contact Friends of St Kilda Botanical Gardens at the convenor@foskbg.org.au



August 2021

Friends
of
St Kilda Botanical
Gardens



St Kilda Botanical Gardens



The Friends of St Kilda Botanical Gardens Membership application

Recreational features

The giant chess board incorporates purpose built bench seats and tables with regular sized chessboards set into the table tops for players to bring their own chess pieces.

The regular sized chess boards are available at any time during garden opening hours for all to enjoy (from dusk till dawn). But if you wish have a 'BIG' game you will need to book. The giant board is available up until 2pm, after which the chess club has it booked everyday from 2pm until sunset.

Ornamental pond with Rain Man fountain. Rain Man is a key element to the ornamental pond and was installed in 2005; designed by Corey Thomas and Ken Arnold, he runs on solar power and recycled water from the pond below.

Children's play space and Gazebo.

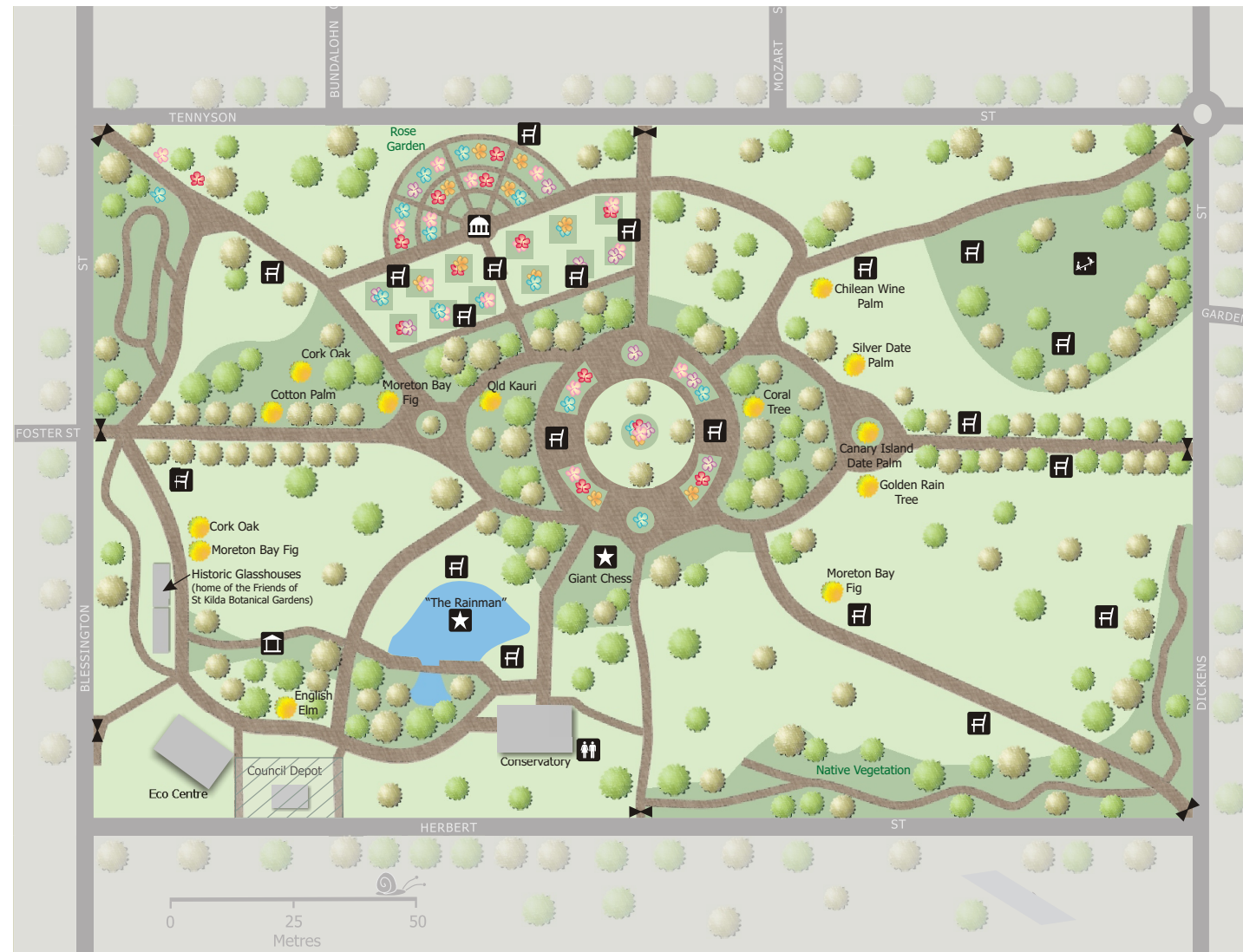
General Info

The St Kilda Botanical Gardens are bordered by Dickens, Tennyson, Blessington and Herbert Streets.

St Kilda Botanical Gardens are open between sunrise and sunset seven days a week and the conservatory is open between 7am and sunset week days.

The Friends of St Kilda Botanical Gardens is a member of Botanic Gardens Conservation International, the world's largest network for the protection of plant diversity.

For more information call ASSIST on 9209 6777 or go to www.foskbg.org.au.



Map designed by students of Geospatial Science, RMIT University

Name _____

Name _____

Street _____

Suburb _____

Postcode _____

Email _____

I would like to (please tick area of interest):

help at working bees

help with plant propagation

Date _____

Please complete and return with payment (\$20 family / \$12 concession):

Deliver by hand to volunteers at the Glasshouses Saturdays 3-5pm

Mail to Friends of St Kilda Botanical Gardens PO Box 1089, Elwood 3184

Bank BSB 633 000, account 140833971 and email form and receipt to the.convenor@foskbg.org.au

Membership fees and plant sales go towards helping to maintain these historical gardens.