

Parking Management Policy Review  
Attachment 2: Proposed Changes to Parking Areas

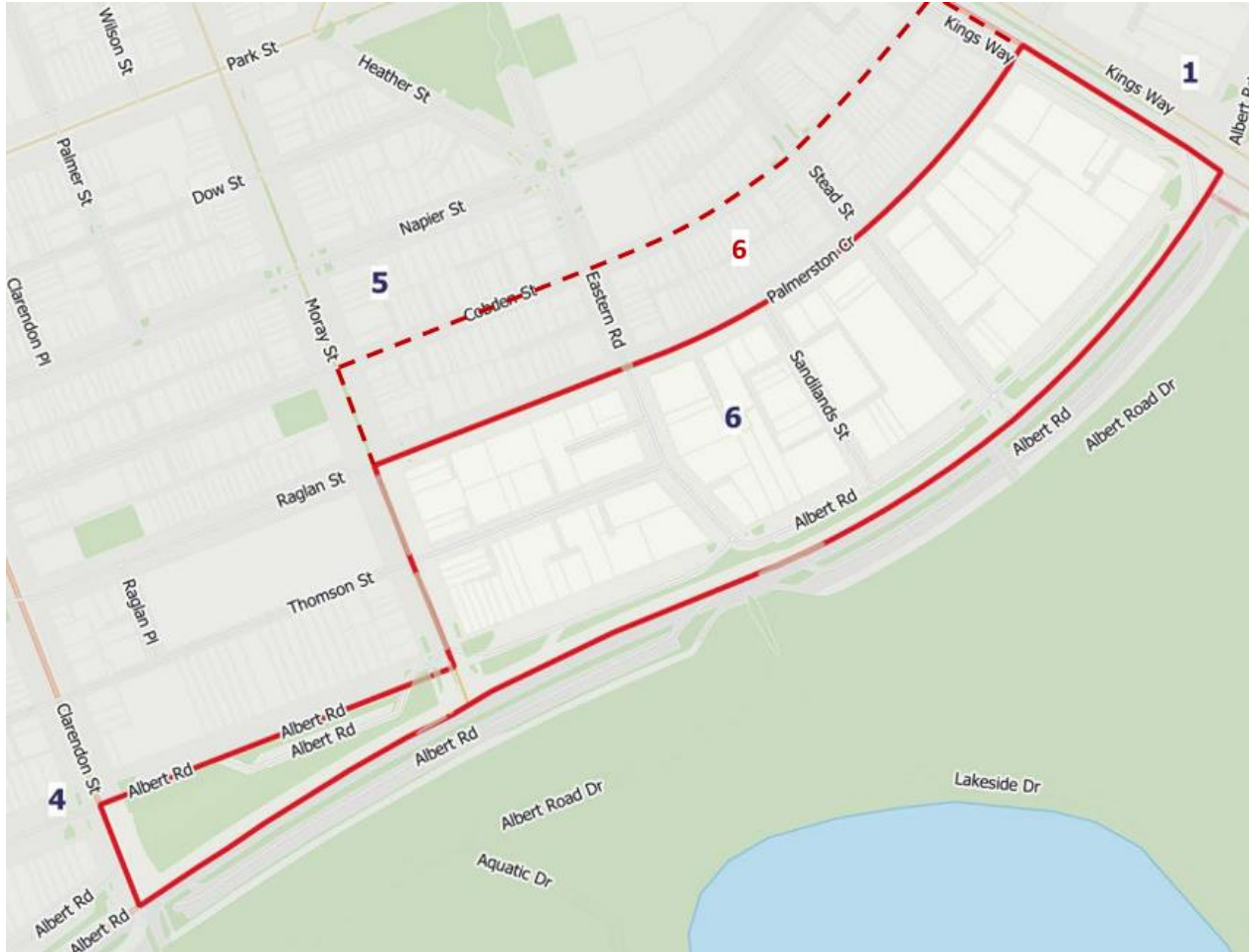


Figure 1: Proposed Change to Area 6 - Extend boundary north to Cobden St

Parking Management Policy Review  
Attachment 2: Proposed Changes to Parking Areas

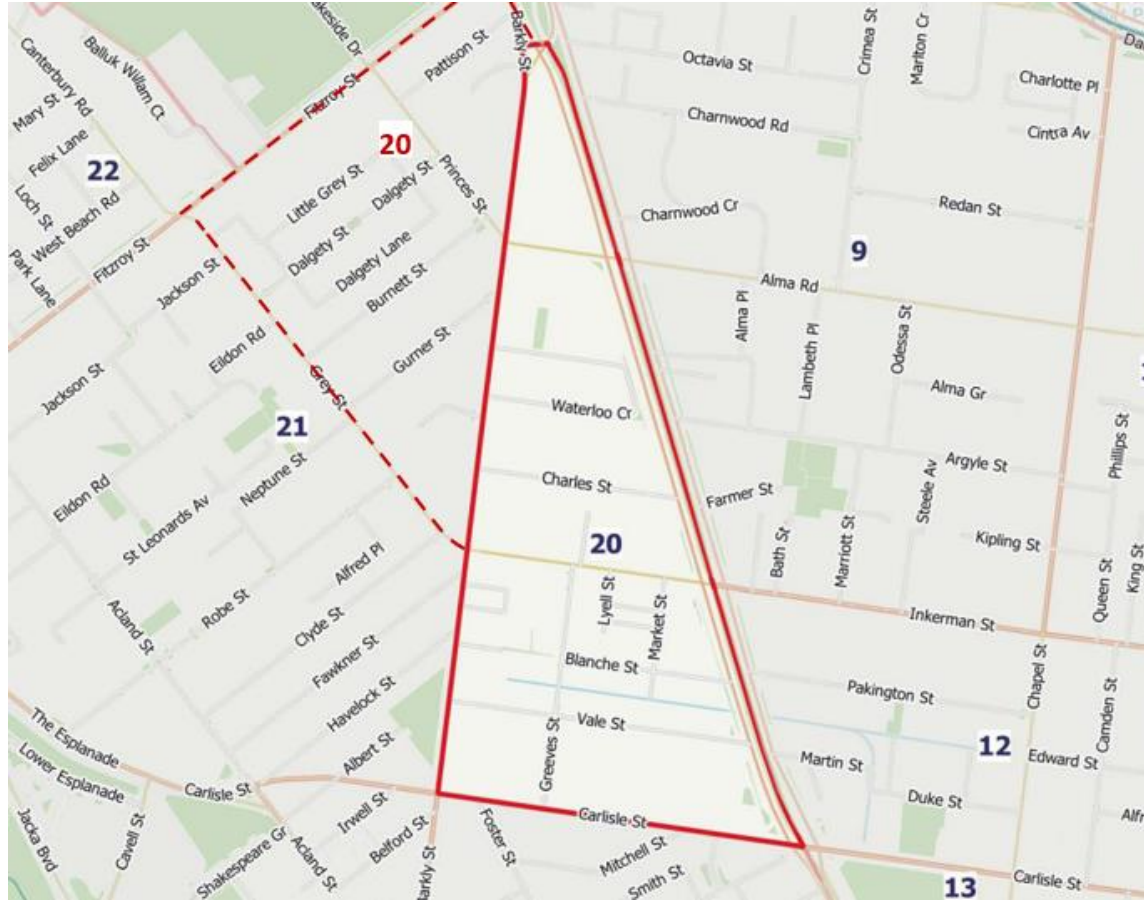


Figure 2: Proposed Change to Area 20 - Incorporate the section of Area 21 bound by Grey Street and Fitzroy Street into Area 20

Parking Management Policy Review  
Attachment 2: Proposed Changes to Parking Areas



Figure 3: Proposed Change to Area 24 - Split into two areas along Neville St

Parking Management Policy Review  
Attachment 2: Proposed Changes to Parking Areas



Figure 4: Proposed Change to Area 25 - Split into two areas along Dinsdale St and Barrett St, and move the boundary from Bevan St to Bridport St