

Matrix, 331-335 St Kilda Rd

Landscape Concept Report



Prepared for Matrix

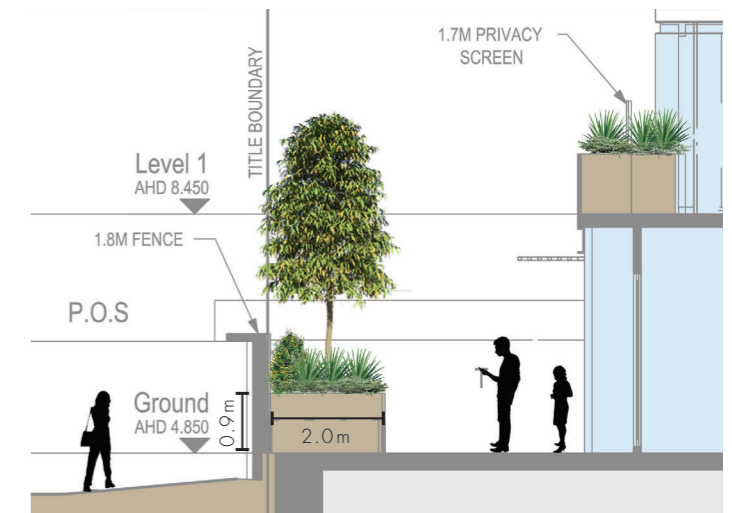


Ground Floor

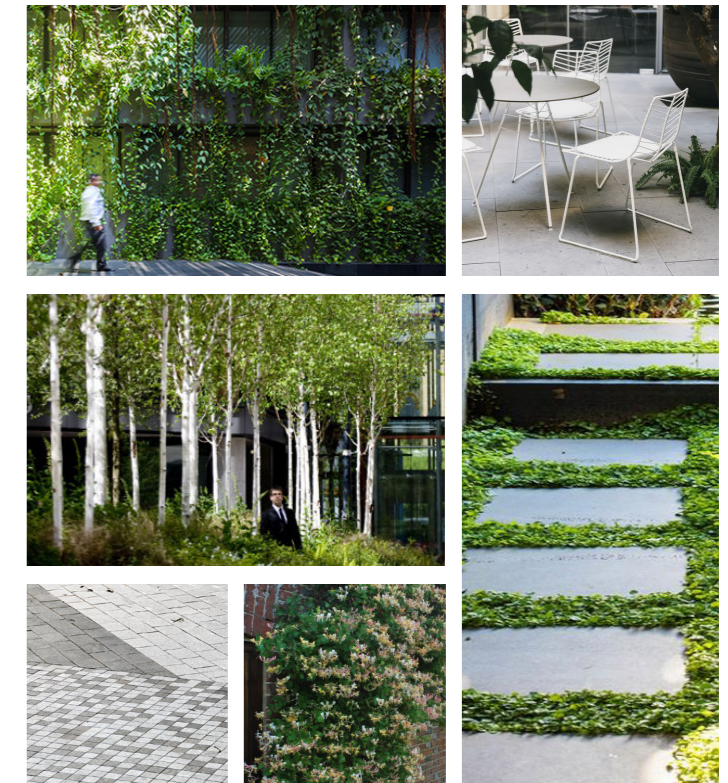
Legend

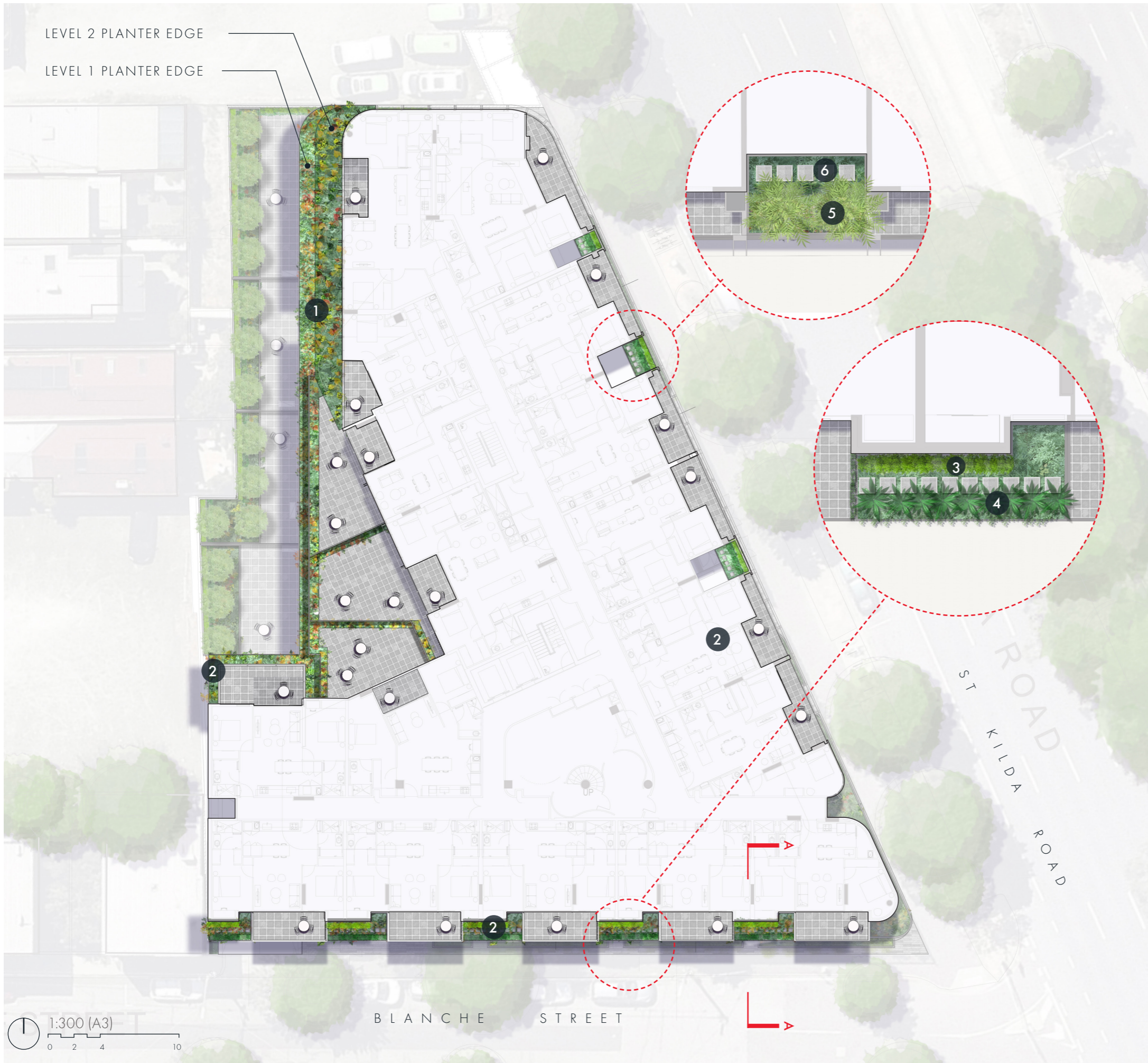
- 1 Private Paved areas with irrigated garden bed
- 2 Native trees for screening along boundary line
- 3 Native grasses along facade
- 4 Shade loving plants along southern courtyard
- 5 Climber along northern boundary

Section AA: Planter to Western Boundary



Landscape Concept Precedent Images





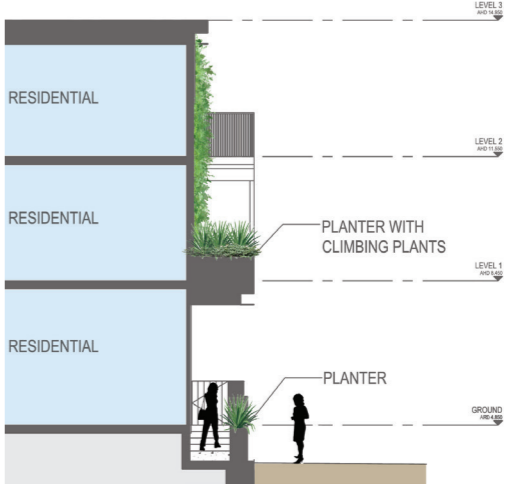
Levels 1+2

Residential Street Interface

Legend

- 1 Native planter with cascading plants over edge
- 2 Planters with shade tolerant species and climbers
- 3 Climbers for screening and steppers for maintenance
- 4 Proposed shade tolerant plants on southern balcony planters
- 5 Proposed bamboo with climbers between balconies
- 6 Steppers for maintenance access

Section AA: Climbers to Blanche St facade



Landscape Concept Precedent Images

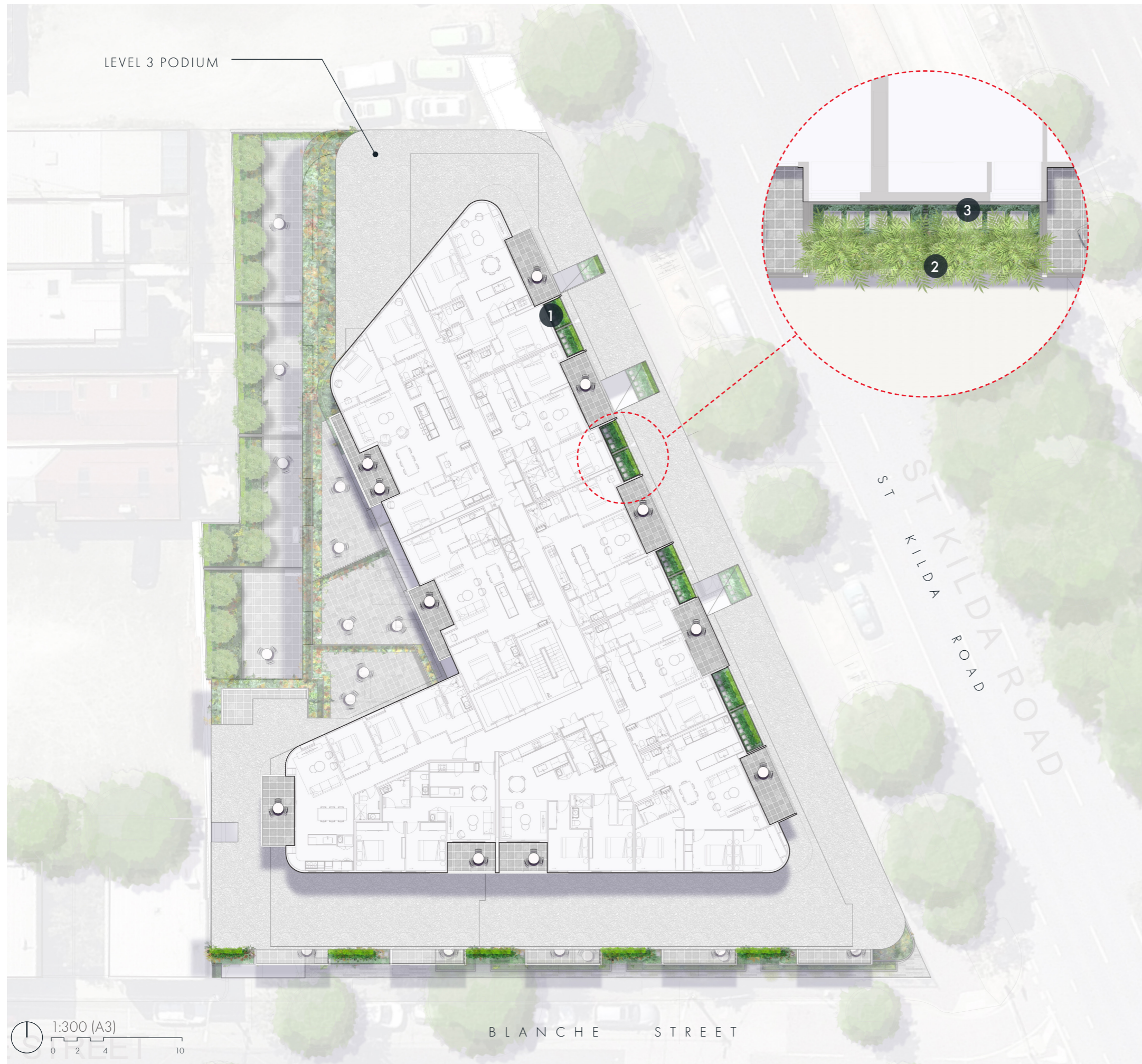


Levels 3+4

Saint Kilda Road Interface

Legend

- 1 Mass planting in planters with climbers between balconies
- 2 Proposed bamboo with climbers between balconies
- 3 Steppers for maintenance access



Landscape Concept Precedent Images



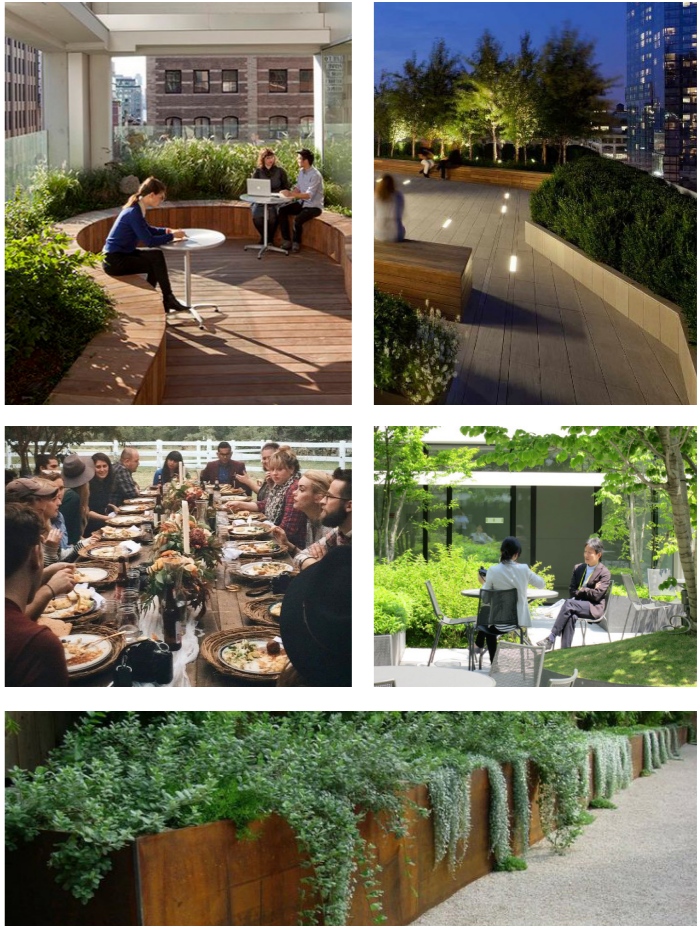


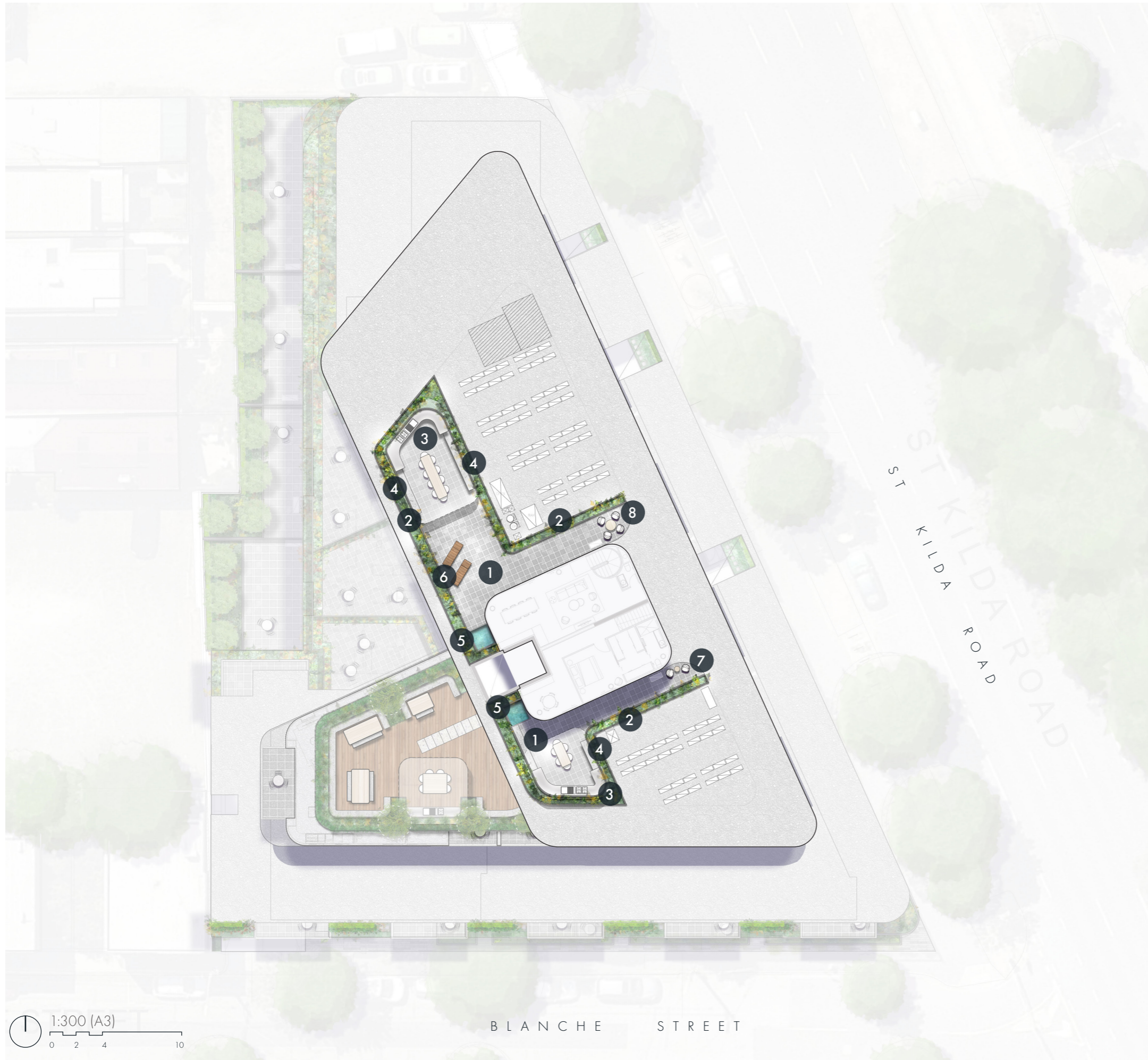
Level 5

Legend

- 1 Mass planting in planters with climbers between balconies
- 2 BBQ facilities with tables and chairs under a shelter
- 3 Feature paving from entrance to building
- 4 Fixed communal table and chairs with perimeter bench seating
- 5 Screen planting
- 6 Feature tree

Landscape Concept Precedent Images





Roof

Legend

- 1 Private penthouse balconies
- 2 Native planter wrapping around entire space with screening plants as required, approx 1.5m
- 3 Private BBQ facilities with tables and chairs under a shelter
- 4 Private Bench seating
- 5 Proprietary Spa Pool
- 6 Sunbathing Loungers
- 7 Seating with Coffee Table
- 8 Seating with Table

Landscape Concept Precedent Images



Indicative Furniture and Materials Palette

Materials

The landscape design proposes a palette which utilises different materials to designate and separate spaces and uses. The materials aim to both compliment and contrast with each other to create these seamless boundaries.

The white planter walls will contrast with the variety of planting colours and the associated timber benches will warm the shaded spaces throughout the ground level.



Bluestone Pavers



Steel trellis & cabling systems



Hardwood Timber Deck

Furniture

The landscape design proposes a combination of seating options which provide break out spaces throughout the levels.

The bank seating are inset to the garden beds providing an immersive garden experience with fixed table seating.

BBQ Facilities provided on Level 5 to create a community focus and a sense of place for the user..



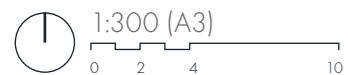
BBQ Facilities



Bank Seating



Large Communal Fixed Tables

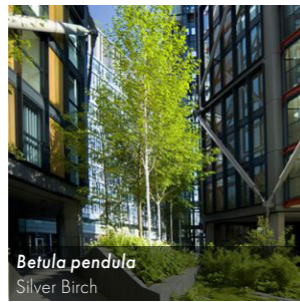


Indicative Planting Palette

Trees



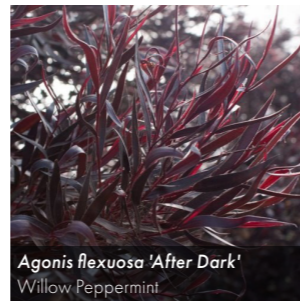
Eleocarpus reticulatus
Blueberry Ash



Betula pendula
Silver Birch



Cycad revoluta
Sago Palm



Agonis flexuosa 'After Dark'
Willow Peppermint



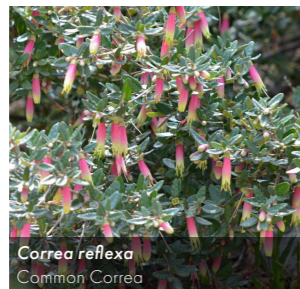
Bambusa oldhamii
Giant Timber Bamboo

Botanic Name	Common Name	Mature (H x W)	Install Size
Trees			
<i>Eleocarpus reticulatus</i>	Blueberry Ash	9 x 4m	45L
<i>Betula pendula</i>	Silver Birch	12 x 5m	45L
<i>Bambusa oldhamii</i>	Giant Timber Bamboo	15 x 0.2m	45L
<i>Cycad revoluta</i>	Sago Palm	1-2 x 2m	400mm pot
<i>Agonis flexuosa 'After Dark'</i>	Willow Peppermint	6 x 3m	400mm pot

Shrubs and Grasses



Trachelospermum jasminoides
Chinese Star Jasmine



Correa reflexa
Common Correa



Dianella tasmanica
Tasman Flax-lily



Strelitzia reginae
Bird of Paradise



Blechnum cartilagineum
Gristle Fern

Shrubs, Grasses & Groundcovers

<i>Trachelospermum jasminoides</i>	Star Jasmine	6-8x6-8m	200mm pot
<i>Correa reflexa</i>	Common Correa	0.2-3x3m	200mm pot
<i>Dianella tasmanica</i>	Tasman Flax-lily	0.75-1x indef	200mm pot
<i>Strelitzia reginae</i>	Bird of Paradise	1.5-2x2-3m	200mm pot
<i>Blechnum cartilagineum</i>	Gristle Fern	0.5-1.5x1m	200mm pot
<i>Aplenium australasicum</i>	Bird's Nest Fern	0.5-1x0.5-1m	200mm pot
<i>Tetragonia implexicoma</i>	Bower Spinach	0.4x indef	200mm pot
<i>Lomandra 'Tanika'</i>	Fine Leafed Lomandra	0.5-0.7x0.7m	200mm pot
<i>Poa poiformis</i>	Tussock Grass	1x1m	200mm pot
<i>Leucophyta brownii</i>	Cushion Bush	0.6x0.75m	200mm pot
<i>Ophiopogon Japonicus Nana</i>	Dwarf Mondo Grass	0.1 x 0.2m	200mm pot
<i>Syzygium australe 'Pinnacle'</i>	Pinnacle Lilly Pilly	6x2-3m	200mm pot



Asplenium australasicum
Birds Nest Fern



Tetragonia implexicoma
Bower Spinach



Lomandra 'Tanika'
Fine-leaf Lomandra



Poa poiformis
Tussock Grass



Leucophyta brownii
Cushion Bush



Ophiopogon Japonicus Nana
Dwarf Mondo Grass



Syzygium australe 'Pinnacle'
Pinnacle Lilly Pilly

Climbers + Cascading



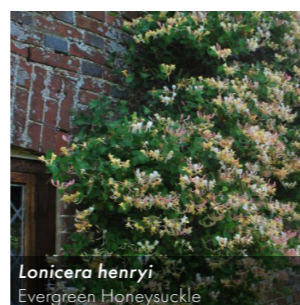
Dichondra argentea 'Silver Falls'
Dichondra Silver Falls



Pandorea pandorana
Wonga Wonga Vine



Parthenocissus quinquefolia
Virginia creeper

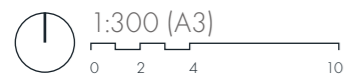


Lonicera henryi
Evergreen Honeysuckle

Climbers & Cascading

<i>Dichondra argentea 'Silver Falls'</i>	Dichondra Silver Falls	Climbing	200mm pot
<i>Lonicera henryi</i>	Evergreen Honeysuckle	Climbing	200mm pot
<i>Dichondra argentea 'Silver Falls'</i>	Dichondra Silver Falls	0.1 x 0.9-1.2m	200mm pot
<i>Pandorea pandorana</i>	Wonga Wonga Vine	Climbing	200mm pot

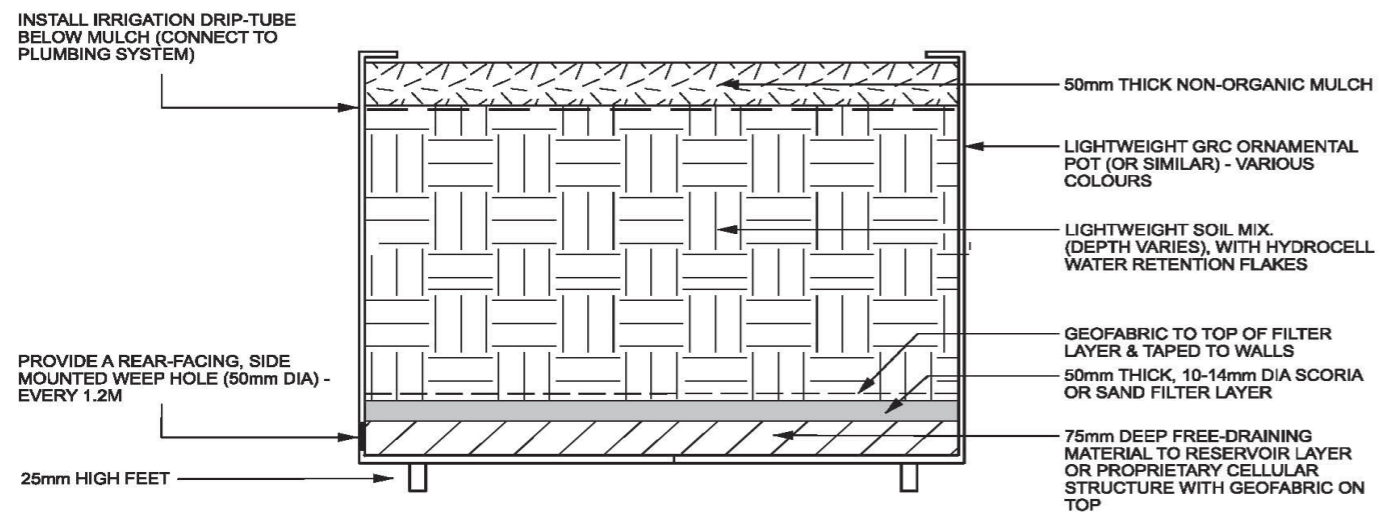
*Shade tolerant



Maintenance

All proposed garden beds are to be maintained by a landscape maintenance contractor facilitated & managed by Body Corporate. Maintenance activities will include a minimum 26 week establishment period including; fertilizer application; weed removal, replenishment of mulch, monitoring of plant health and performance and the implementation of appropriate horticultural measures to ensure optimal growth at all times.

Typical Planting detail



TROUGH / POT DETAIL - N.T.S

(NOTE: DETAIL IS AN EXAMPLE ONLY AND SUBJECT TO COUNCIL APPROVAL.)

TYPICAL RAISED PLANTER -
MINIMUM SOIL DEPTH REQUIREMENTS

TREES : 900MM TO 1200MM

Contact Tract

Office

[Tract Consultants]
[6 Riverside Quay, Southbank, 3006]