

28 - 32 ALBERT ROAD, SOUTH MELBOURNE, VICTORIA

MAY 2023

LANDSCAPE ARCHITECTURAL DRAWINGS

TOWN PLANNING | REVISION 02 | MAY 2023

DWG NO	DRAWING TITLE	SCALE	REV	NOTE
B1 SET				
LA_000	DRAWING REGISTER	-	02	-
LA_001	EXISTING CONDITIONS	1:100	02	-
LA_099	GENERAL ARRANGEMENT PLAN LOWER GROUND FLOOR COLOUR	1:50	02	-
LA_100	GENERAL ARRANGEMENT PLAN GROUND FLOOR COLOUR	1:50	02	-
LA_100.1	GENERAL ARRANGEMENT PLAN GROUND FLOOR BLACK AND WHITE	1:50	02	-
LA_100.2	GENERAL ARRANGEMENT PLAN GROUND FLOOR INDICATIVE OCCASIONAL FURNITURE	1:50	02	-
LA_101	GENERAL ARRANGEMENT PLAN LEVEL 01 COLOUR	1:50	02	-
LA_101.1	GENERAL ARRANGEMENT PLAN LEVEL 01 BLACK AND WHITE	1:50	02	-
LA_102	GENERAL ARRANGEMENT PLAN LEVEL 02 COLOUR	1:100	02	-
LA_102.1	GENERAL ARRANGEMENT PLAN LEVEL 02 BLACK AND WHITE	1:100	02	-
LA_103	GENERAL ARRANGEMENT PLAN LEVEL 02 EAST COLOUR	1:50	02	-
LA_103.1	GENERAL ARRANGEMENT PLAN LEVEL 02 EAST BLACK AND WHITE	1:50	02	-
LA_701	EAST ELEVATION COLOUR	1:200	02	-
LA_702	EAST ELEVATION LEVELS 0-2 COLOUR	1:50	02	-
LA_801	SECTION COLOUR	AS SHOWN	02	-
LA_802	SECTION DETAIL COLOUR	AS SHOWN	02	-
LA_803	SECTION DETAIL COLOUR	AS SHOWN	02	-
LA_804	SECTION DETAIL COLOUR	AS SHOWN	02	-
A3 SET				
LA_1000	PRECEDENT IMAGERY & SUPPORTING DOCUMENTATION	-	02	-

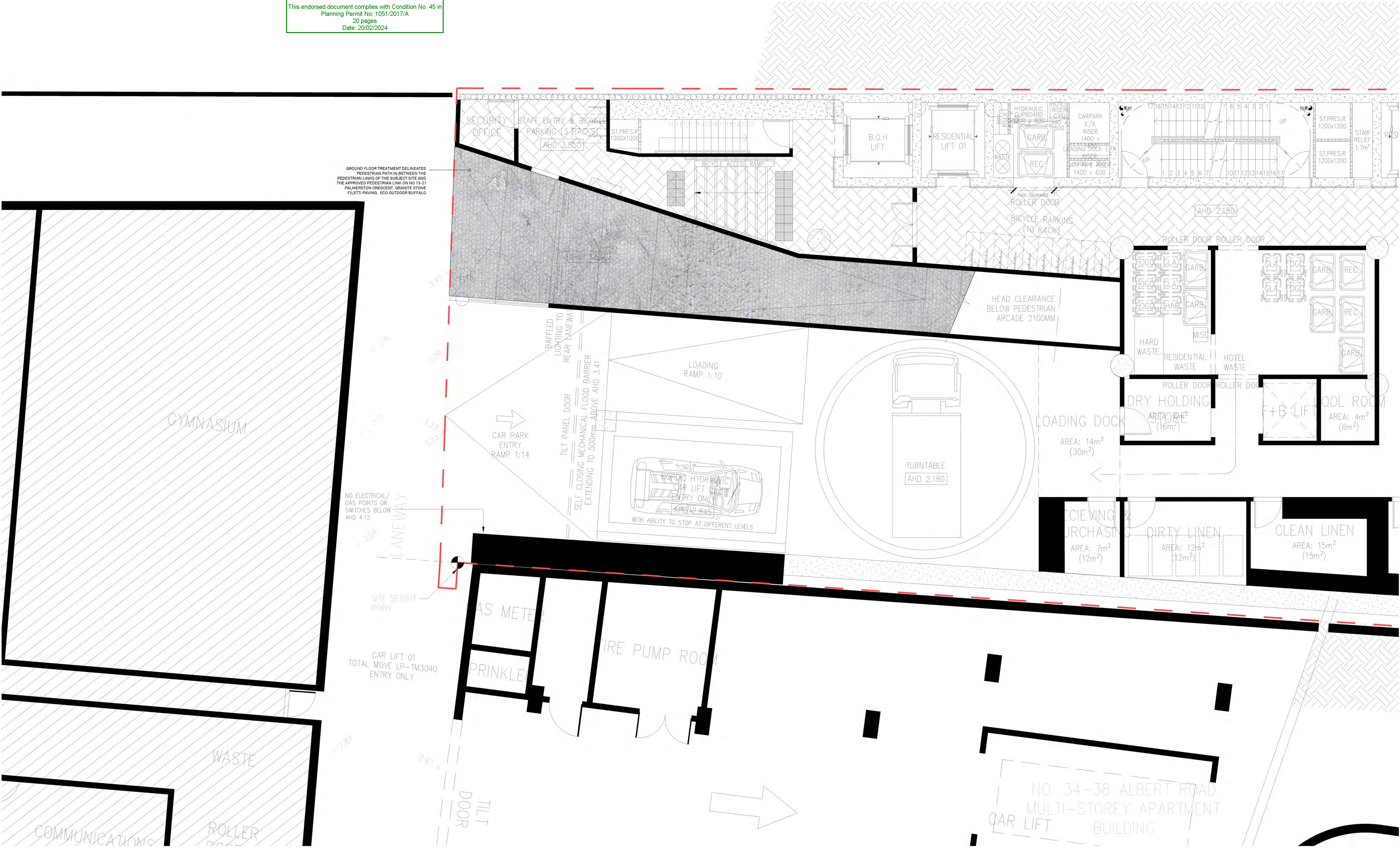
CITY OF PORT PHILLIP
PORT PHILLIP PLANNING SCHEME

This endorsed document complies with Condition No. 45 in
Planning Permit No: 1051/2017/A
20 pages
Date: 20/02/2024

<div>GENERAL NOTES:</div> <div>THIS DRAWING IS TO BE READ IN CONJUNCTION WITH ALL OTHER LANDSCAPE PLANS, RELEVANT NOTES & DOCUMENTATION, BUILDING CONSTRUCTION DRAWINGS & ENGINEERING DRAWINGS.</div> <div>ALL DIMENSIONS AND LEVELS ARE TO BE CHECKED & CONFIRMED PRIOR TO COMMENCEMENT OF ANY WORKS.</div> <div>ANY DISCREPANCIES ARE TO BE BROUGHT TO THE ATTENTION OF BARBER DESIGN.</div>	REV	DATE	DESCRIPTION	REV	DATE	DESCRIPTION	PROJECT				DRAWING NAME				DRAWING NO.				CLIENT DCF	ARCHITECT ELENBERG FRASER	STRUCTURAL	CIVIL	web: www.barberdesign.com.au email: sam@barberdesign.com.au phone: +61 (3) 9510 8912 phone: +61 (0)417 358 357 mail: 1a Chatsworth Road, Prahran VIC 3181
	01	22.11.22	PLANNING PERMIT CONDITIONS	-	-	-	28-32 ALBERT ROAD, SOUTH MELBOURNE				DRAWING REGISTER				LA_000								
	02	16.05.23	REVISIONS FOR RE-SUBMISSION				LANDSCAPE ARCHITECTURAL DRAWINGS																
							STATUS				SCALE				REV								
							TOWN PLANNING				-				02								
															JOB NO.								
															DATE								
															21.488								
															MAY 2023								

[illegible]

CITY OF PORT PHILLIP
PORT PHILLIP PLANNING SCHEME
This endorsed document complies with Condition No. 45 in
Planning Permit No: 1051/2017/A
20 pages
Date: 20/02/2024



GENERAL NOTES:
THIS DRAWING IS TO BE READ IN CONJUNCTION WITH ALL OTHER
LANDSCAPE PLANS, RELEVANT NOTES & DOCUMENTATION,
BUILDING CONSTRUCTION DRAWINGS & ENGINEERING DRAWINGS.
ALL DIMENSIONS AND LEVELS ARE TO BE CHECKED & CONFIRMED
PRIOR TO COMMENCEMENT OF ANY WORKS.
ANY DISCREPANCIES ARE TO BE BROUGHT TO THE ATTENTION OF
BARBER DESIGN.

REV	DATE	DESCRIPTION	REV	DATE	DESCRIPTION
01	22.11.22	PLANNING PERMIT CONDITIONS	-	-	-
02	16.05.23	REVISIONS FOR RE-SUBMISSION	-	-	-

PROJECT
28-32 ALBERT ROAD, SOUTH MELBOURNE
LANDSCAPE ARCHITECTURAL DRAWINGS

STATUS
TOWN PLANNING

DRAWING NAME
GENERAL ARRANGEMENT PLAN
LOWER GROUND FLOOR

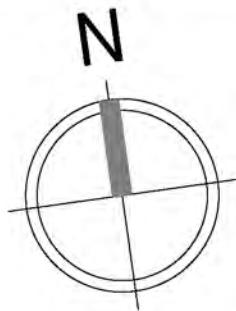
SCALE
1:50 @ B1

REV
02

DRAWING NO.
LA_099

JOB NO.
21.488

DATE
MAY 2023



CLIENT
DCF

STRUCTURAL

ARCHITECT
ELENBERG FRASER

CIVIL

BARBER

web: www.barberdesign.com.au
email: sam@barberdesign.com.au
phone: +61 (0)17 358 357
mail: 1a Chatsworth Road, Prahran VIC 3181

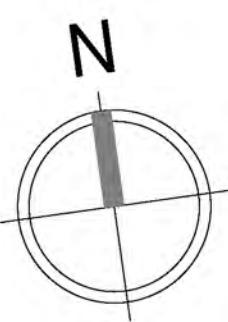
PLANTING SCHEDULE GROUND FLOOR									
CODE:	BOTANICAL NAME:	COMMON NAME:	NATIVE / INDIGENOUS:	MATURE HEIGHT x SPREAD:	QUANTITY:	SIZE AT TIME OF PLANTING:	SPACING:	SHADE TOLERANCE:	COMMENTS:
TREES:									
AL	AMELANCHIER LAEVIS	SMOOTH SERVICEBERRY		4.5-7.5 x 4.5-7.5m	4	45tr	PLANTED AS SHOWN	UNDERSTOREY TREE, TOLERATES SHADY CONDITIONS	GROWN OFF-SITE
GROUNDCOVER & CASCADING:									
PS	PARTHENOCISSUS SIKKIMENSIS	SIKKIM CREEPER		0.5-10 x 0.5-10m	31	14cm	300mm C/C IN ROW	VERY SHADE TOLERANT	
TS	TETRAGONIA IMPLEXICOMA	BOWER SPINACH	INDIGENOUS	0.2 x 2m	70	14cm	300mm C/C	FULL SUN TO PART SHADE	
WM/A	VINCA MINOR 'ALBA'	WHITE DWARF PERIWINKLE		0.2 x 0.45-1m	193	14cm	300mm C/C	SHADE HARDY, TOLERATES ALMOST FULL SHADE	

[illegible]

DRAWING NO.
LA_100

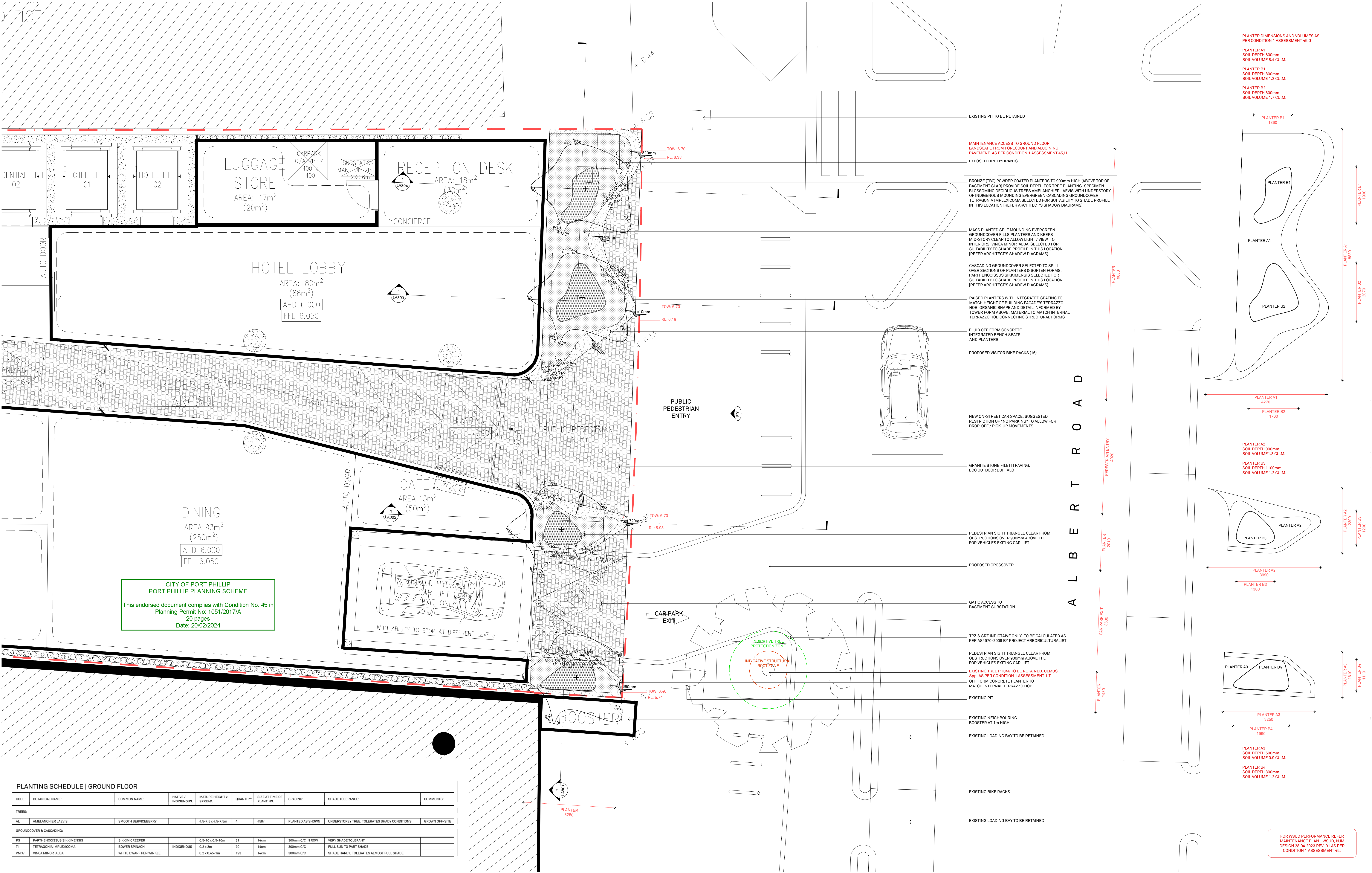
JOB NO. DATE

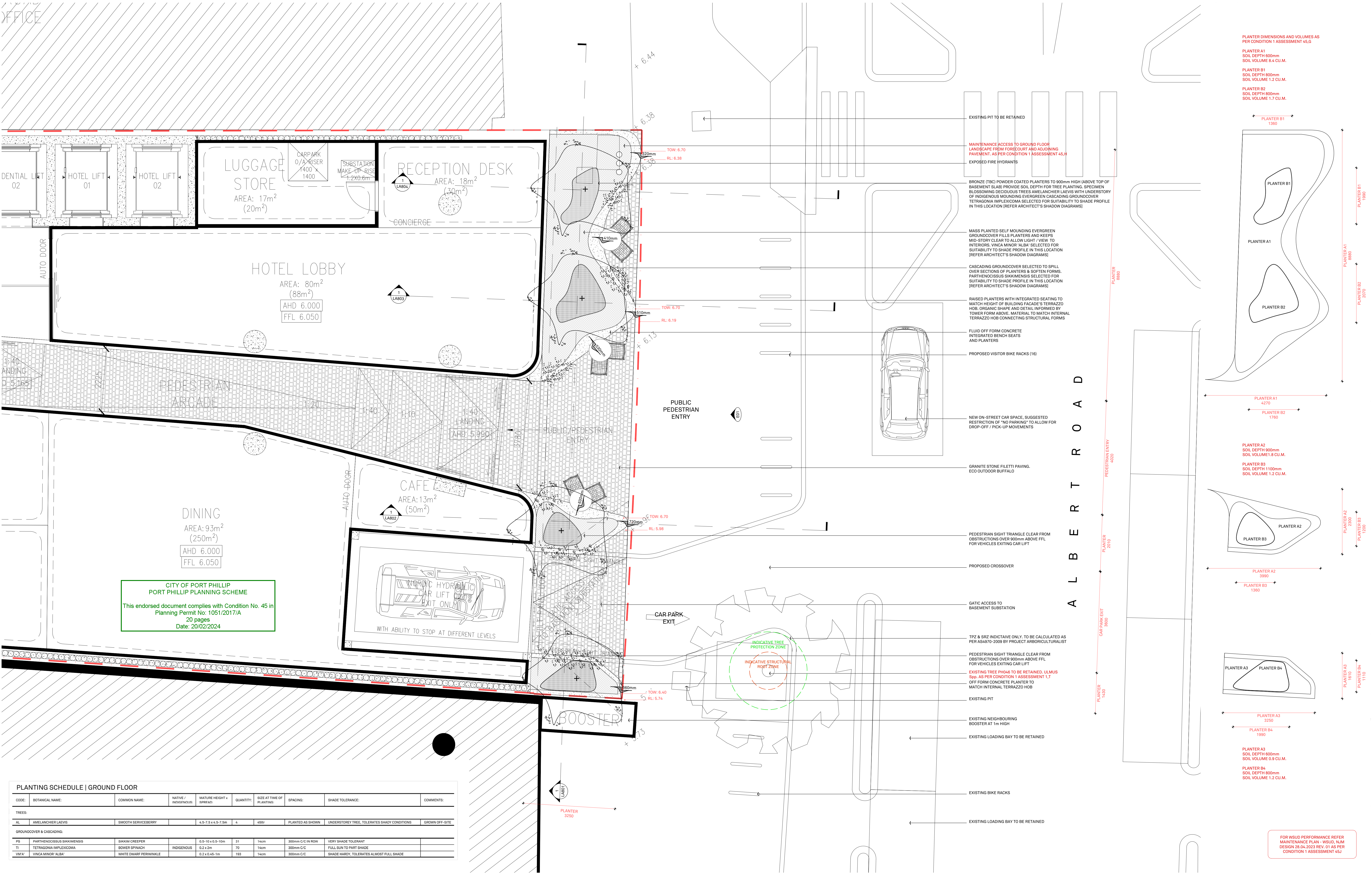
21.488 MAY 2023

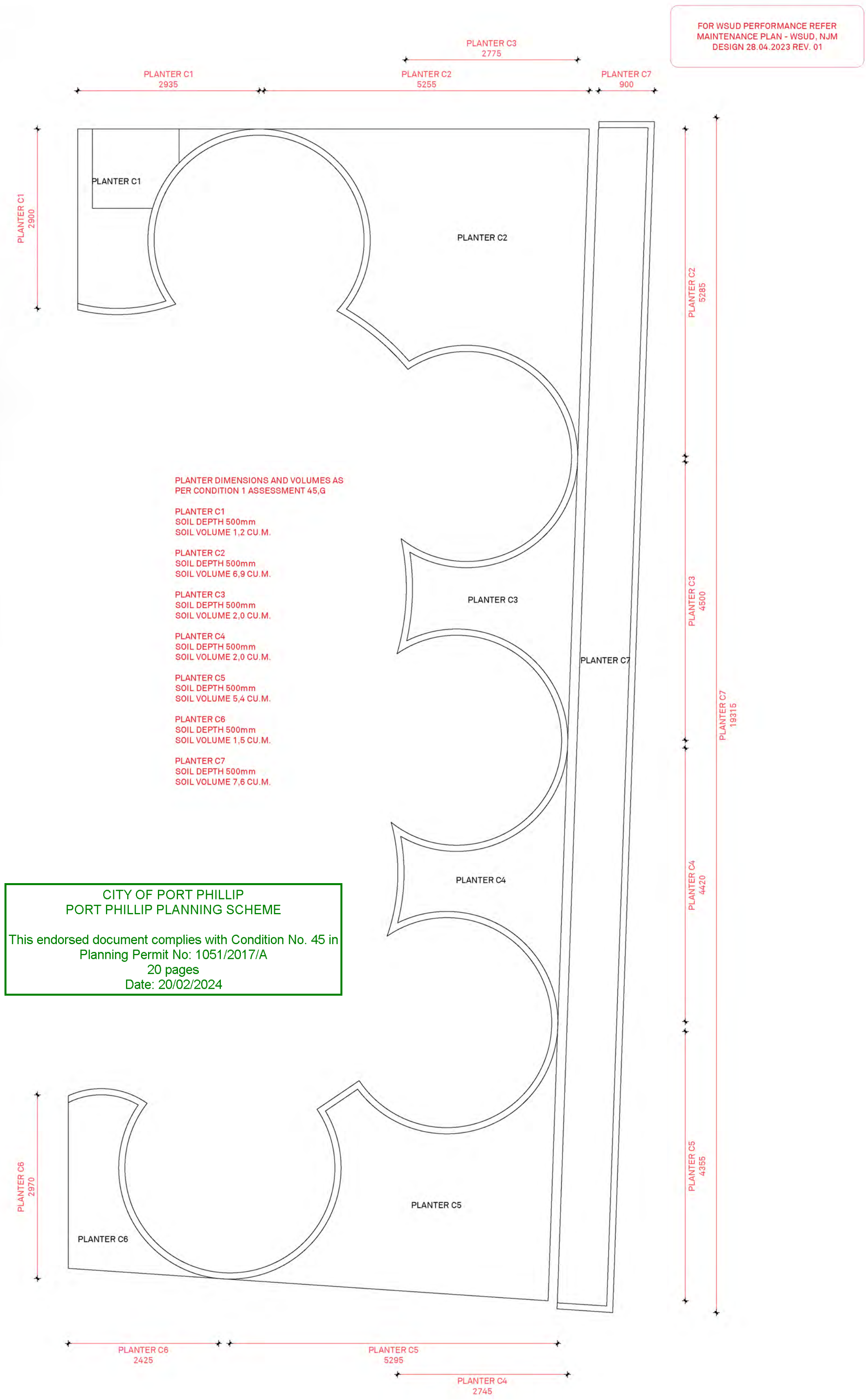


BARBER

web: www.barberdesign.com.au
email: sam@barberdesign.com.au
phone: +61 (3) 9510 8912
phone: +61 (0)417 358 357
mail: 1a Chatsworth Road, Prahran VIC 3181







PLANTING SCHEDULE LEVEL 01									
CODE:	BOTANICAL NAME:	COMMON NAME:	NATIVE / INDIGENOUS:	MATURE HEIGHT x SPREAD:	QUANTITY:	SIZE AT TIME OF PLANTING:	SPACING:	SHADE TOLERANCE:	COMMENTS:
SHRUBS:									
CDB	CORREA REFLEXA x PULCHELLA 'DUSKY BELLS'	NATIVE FUSCIA	NATIVE	0.5-1 x 1.5-3m	16	20cm	PLANTED AS SHOWN	PART TO FULL SHADE	
DO	DAPHNE ODORA	WINTER DAPHNE		1-1.5 x 1-1.5m	9	25cm	PLANTED AS SHOWN	TOLERATES SHADE, MORNING LIGHT PREFERRED	
SC	SARCOCCOCCA CONFUSA	SWEET BOX		1.2 x 1m	13	20cm	PLANTED AS SHOWN	PART TO FULL SHADE	
PALMS & FERNS:									
HF	HOWEA FORSTERIANA	KENTIA PALM	NATIVE	8-15 x 5-8m	11	40cm	PLANTED AS SHOWN	SHADE TOLERANT	
RE	RHAPIS EXCELSA	RHAPIS PALM		3-5 x 1.5-3m	8	40cm	PLANTED AS SHOWN	WITHSTANDS DEEP SHADE	
CF	CRYPTOTIUM FALCATUM	JAPANESE HOLLY FERN		0.6 x 1m	16	40cm	PLANTED AS SHOWN	PART TO FULL SHADE	
HERBACEOUS PERENNIALS:									
MD	MONSTERA DELICIOSA	SPLIT LEAF PHILODENDRON		1.5-10 x 1-2m	13	40cm	PLANTED AS SHOWN	PART TO FULL SHADE	
AM	ALOCASIA MACRORRHIZA	ELEPHANT'S EAR	NATIVE	3.6-4.5 x 1.8-2.4m	24	40cm	PLANTED AS SHOWN	TOLERATES PART TO FULL SHADE	
PS	PHILODENDRON GOELDII	PHILODENDRON FUN BUN		0.5-0.9 x 1.2m	22	20cm	PLANTED AS SHOWN	SHADE TOLERANT, PREFER SOME INDIRECT LIGHT	
LIR	LIGULARIA REINFORMIS	TRACTOR SEAT PLANT		0.7-1 x 0.7-1m	10	14cm	PLANTED AS SHOWN	DAPPLED TO FULL SHADE	
FJ	FATSIA JAPONICA	JAPANESE ARALIA		1.5-4 x 1.5-4m	13	30cm	PLANTED AS SHOWN	PART TO FULL SHADE, INDIRECT LIGHT PREFERRED	
AN	ALPINA NUTANS	DWARF CARDAMOM		1-1.5 x 1m	19	30cm	PLANTED AS SHOWN	TOLERATES FULL SHADE	
CASCADING GROUNDCOVER:									
PC	PHILODENDRON CORDATUM	HEART LEAF PHILODENDRON		0.7-1 x 0.7-1m	156	14cm	200mm C/C	SHADE TOLERANT, PREFER SOME INDIRECT LIGHT	
PS	PARTHENOCISSUS SIKKIMENSIS	SIKKIM CREEPER		0.5-10 x 0.5-10m	34	14cm	300mm C/C	VERY SHADE TOLERANT	
TI	TETRAGONIA IMPLEXICOMA	BOWER SPINACH	INDIGENOUS	0.2 x 2m	74	14cm	300mm C/C	FULL SUN TO PART SHADE	

GENERAL NOTES:
THIS DRAWING IS TO BE READ IN CONJUNCTION WITH ALL OTHER LANDSCAPE PLANS, RELEVANT NOTES & DOCUMENTATION, BUILDING CONSTRUCTION DRAWINGS & ENGINEERING DRAWINGS.
ALL DIMENSIONS AND LEVELS ARE TO BE CHECKED & CONFIRMED PRIOR TO COMMENCEMENT OF ANY WORKS.
ANY DISCREPANCIES ARE TO BE BROUGHT TO THE ATTENTION OF BARBER DESIGN.

REV	DATE	DESCRIPTION
01	22.11.22	PLANNING PERMIT CONDITIONS
02	16.05.23	REVISIONS FOR RE-SUBMISSION

PROJECT
28-32 ALBERT ROAD, SOUTH MELBOURNE
LANDSCAPE ARCHITECTURAL DRAWINGS

STATUS
TOWN PLANNING

DRAWING NAME
GENERAL ARRANGEMENT PLAN
LEVEL 01 | COLOUR

SCALE
1:100 @ B1

DRAWING NO.
LA_101

REV
02

CLIENT
DCF

STRUCTURAL

ARCHITECT
ELENBERG FRASER

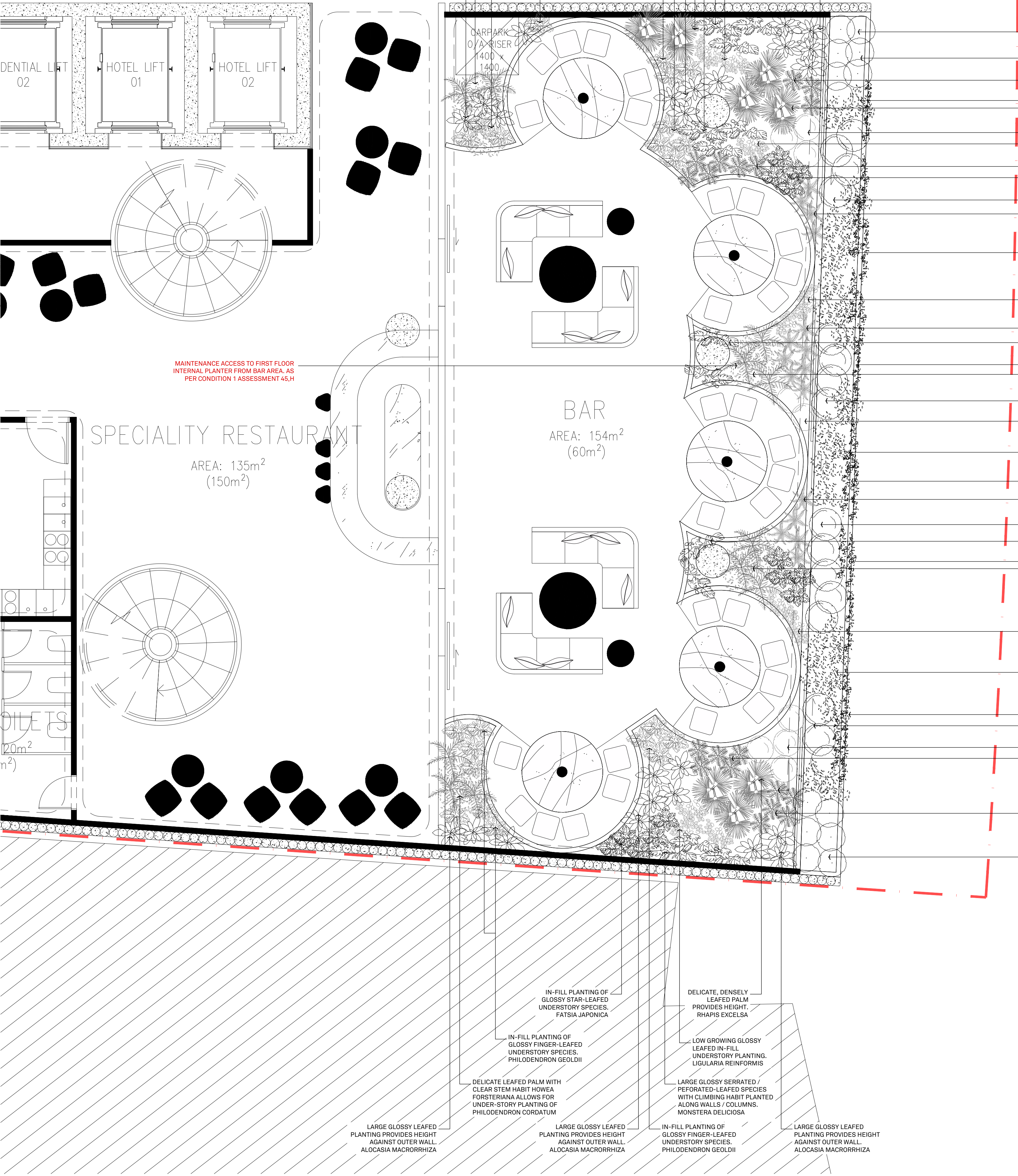
CIVIL

web: www.barberdesign.com.au
email: sam@barberdesign.com.au
phone: +61 (0)17 358 357
mail: 1a Chatsworth Road, Prahran VIC 3181

copyright ©
BARBER

Document Set ID: 9105162
Version: 1, Version Date: 14/05/2025

OFFICE



- FLOWERING SHRUBS PLANTED IN GROUPS, SARCOCCOCCA CONFUSA
- FLOWERING STRAPPY LEAFED IN-FILL PLANTING, ALPINIA NUTANS
- DELICATE, DENSELY LEAFED PALM PROVIDES HEIGHT, RHAPIS EXCELSA
- LOW GROWING GLOSSY LEAFED IN-FILL UNDERSTORY PLANTING, LIGULARIA REINFORMIS
- IN-FILL PLANTING OF GLOSSY STAR-LEAFED UNDERSTORY SPECIES, FATSIA JAPONICA
- LOW GROWING FERN SPECIES ALLOWS FOR VIEWS OUT TO STREET, CRYPTOMIUM FALCATUM
- MASS PLANTED INDIGENOUS CASCADING GROUNDCOVER, TETRAGONIA IMPLEXICOMA
- LOW GROWING GLOSSY LEAFED IN-FILL UNDERSTORY PLANTING ALLOWS FOR VIEWS OUT TO STREET, LIGULARIA REINFORMIS
- LARGE GLOSSY SERRATED / PERFORATED-LEAFED SPECIES WITH CLIMBING HABIT PLANTED ALONG WALLS / COLUMNS, MONSTERA DELICIOSA
- DELICATE LEAFED PALM WITH CLEAR STEM HABIT HOWEA FORSTERIANA ALLOWS FOR UNDER-STORY PLANTING OF PHILODENDRON CORDATUM
- FLOWERING NATIVE EVERGREEN SHRUBS, CORREA 'DUSKY BELLS'
- MASS PLANTED INDIGENOUS CASCADING GROUNDCOVER, TETRAGONIA IMPLEXICOMA
- LOW GROWING FERN SPECIES ALLOWS FOR VIEWS OUT TO STREET, CRYPTOMIUM FALCATUM
- LARGE GLOSSY SERRATED / PERFORATED-LEAFED SPECIES WITH CLIMBING HABIT PLANTED ALONG WALLS / COLUMNS, MONSTERA DELICIOSA
- DELICATE LEAFED PALM WITH CLEAR STEM HABIT HOWEA FORSTERIANA ALLOWS FOR UNDER-STORY PLANTING OF PHILODENDRON CORDATUM
- IN-FILL PLANTING OF GLOSSY STAR-LEAFED UNDERSTORY SPECIES, FATSIA JAPONICA
- LOW GROWING GLOSSY LEAFED IN-FILL UNDERSTORY PLANTING ALLOWS FOR VIEWS OUT TO STREET, LIGULARIA REINFORMIS
- MASS PLANTED INDIGENOUS CASCADING GROUNDCOVER, TETRAGONIA IMPLEXICOMA
- FLOWERING NATIVE EVERGREEN SHRUBS, CORREA 'DUSKY BELLS'
- FLOWERING STRAPPY LEAFED IN-FILL PLANTING, ALPINIA NUTANS
- FLOWERING SHRUBS PLANTED IN GROUPS, SARCOCCOCCA CONFUSA

SPECIES PALETTE FOR EXTERNAL PLANTER SELECTED FOR SUITABILITY TO SHADE PROFILE IN THIS LOCATION (REFER ARCHITECT'S SHADOW DIAGRAMS)

MASS PLANTED CASCADING EVERGREEN GROUNDCOVER, PARTHENOCCISSUS SIKKIMENSIS

GROUPS OF FRAGRANT FLOWERING SHRUBS, DAPHNE ODOREA, OPTION: AUROMARGINATA

FLOWERING STRAPPY LEAFED IN-FILL PLANTING, ALPINIA NUTANS

FLOWERING NATIVE EVERGREEN SHRUBS, CORREA 'DUSKY BELLS'

LOW GROWING FERN SPECIES ALLOWS FOR VIEWS OUT TO STREET, CRYPTOMIUM FALCATUM

MASS PLANTED CASCADING EVERGREEN GROUNDCOVER, PARTHENOCCISSUS SIKKIMENSIS

GROUPS OF FRAGRANT FLOWERING SHRUBS, DAPHNE ODOREA, OPTION: AUROMARGINATA

MASS PLANTED CASCADING EVERGREEN GROUNDCOVER, PARTHENOCCISSUS SIKKIMENSIS

MASS PLANTED CASCADING EVERGREEN GROUNDCOVER, PARTHENOCCISSUS SIKKIMENSIS

MASS PLANTED CASCADING EVERGREEN GROUNDCOVER, PARTHENOCCISSUS SIKKIMENSIS

MASS PLANTED CASCADING EVERGREEN GROUNDCOVER, PARTHENOCCISSUS SIKKIMENSIS

MASS PLANTED CASCADING EVERGREEN GROUNDCOVER, PARTHENOCCISSUS SIKKIMENSIS

MASS PLANTED CASCADING EVERGREEN GROUNDCOVER, PARTHENOCCISSUS SIKKIMENSIS

MASS PLANTED CASCADING EVERGREEN GROUNDCOVER, PARTHENOCCISSUS SIKKIMENSIS

MASS PLANTED CASCADING EVERGREEN GROUNDCOVER, PARTHENOCCISSUS SIKKIMENSIS

MASS PLANTED CASCADING EVERGREEN GROUNDCOVER, PARTHENOCCISSUS SIKKIMENSIS

MASS PLANTED CASCADING EVERGREEN GROUNDCOVER, PARTHENOCCISSUS SIKKIMENSIS

MASS PLANTED CASCADING EVERGREEN GROUNDCOVER, PARTHENOCCISSUS SIKKIMENSIS

MASS PLANTED CASCADING EVERGREEN GROUNDCOVER, PARTHENOCCISSUS SIKKIMENSIS

MASS PLANTED CASCADING EVERGREEN GROUNDCOVER, PARTHENOCCISSUS SIKKIMENSIS

MASS PLANTED CASCADING EVERGREEN GROUNDCOVER, PARTHENOCCISSUS SIKKIMENSIS

MASS PLANTED CASCADING EVERGREEN GROUNDCOVER, PARTHENOCCISSUS SIKKIMENSIS

MASS PLANTED CASCADING EVERGREEN GROUNDCOVER, PARTHENOCCISSUS SIKKIMENSIS

MASS PLANTED CASCADING EVERGREEN GROUNDCOVER, PARTHENOCCISSUS SIKKIMENSIS

MASS PLANTED CASCADING EVERGREEN GROUNDCOVER, PARTHENOCCISSUS SIKKIMENSIS

MASS PLANTED CASCADING EVERGREEN GROUNDCOVER, PARTHENOCCISSUS SIKKIMENSIS

MASS PLANTED CASCADING EVERGREEN GROUNDCOVER, PARTHENOCCISSUS SIKKIMENSIS

MASS PLANTED CASCADING EVERGREEN GROUNDCOVER, PARTHENOCCISSUS SIKKIMENSIS

MASS PLANTED CASCADING EVERGREEN GROUNDCOVER, PARTHENOCCISSUS SIKKIMENSIS

MASS PLANTED CASCADING EVERGREEN GROUNDCOVER, PARTHENOCCISSUS SIKKIMENSIS

MASS PLANTED CASCADING EVERGREEN GROUNDCOVER, PARTHENOCCISSUS SIKKIMENSIS

MASS PLANTED CASCADING EVERGREEN GROUNDCOVER, PARTHENOCCISSUS SIKKIMENSIS

MASS PLANTED CASCADING EVERGREEN GROUNDCOVER, PARTHENOCCISSUS SIKKIMENSIS

MASS PLANTED CASCADING EVERGREEN GROUNDCOVER, PARTHENOCCISSUS SIKKIMENSIS

MASS PLANTED CASCADING EVERGREEN GROUNDCOVER, PARTHENOCCISSUS SIKKIMENSIS

MASS PLANTED CASCADING EVERGREEN GROUNDCOVER, PARTHENOCCISSUS SIKKIMENSIS

MASS PLANTED CASCADING EVERGREEN GROUNDCOVER, PARTHENOCCISSUS SIKKIMENSIS

MASS PLANTED CASCADING EVERGREEN GROUNDCOVER, PARTHENOCCISSUS SIKKIMENSIS

MASS PLANTED CASCADING EVERGREEN GROUNDCOVER, PARTHENOCCISSUS SIKKIMENSIS

MASS PLANTED CASCADING EVERGREEN GROUNDCOVER, PARTHENOCCISSUS SIKKIMENSIS

MASS PLANTED CASCADING EVERGREEN GROUNDCOVER, PARTHENOCCISSUS SIKKIMENSIS

MASS PLANTED CASCADING EVERGREEN GROUNDCOVER, PARTHENOCCISSUS SIKKIMENSIS

MASS PLANTED CASCADING EVERGREEN GROUNDCOVER, PARTHENOCCISSUS SIKKIMENSIS

MASS PLANTED CASCADING EVERGREEN GROUNDCOVER, PARTHENOCCISSUS SIKKIMENSIS

MASS PLANTED CASCADING EVERGREEN GROUNDCOVER, PARTHENOCCISSUS SIKKIMENSIS

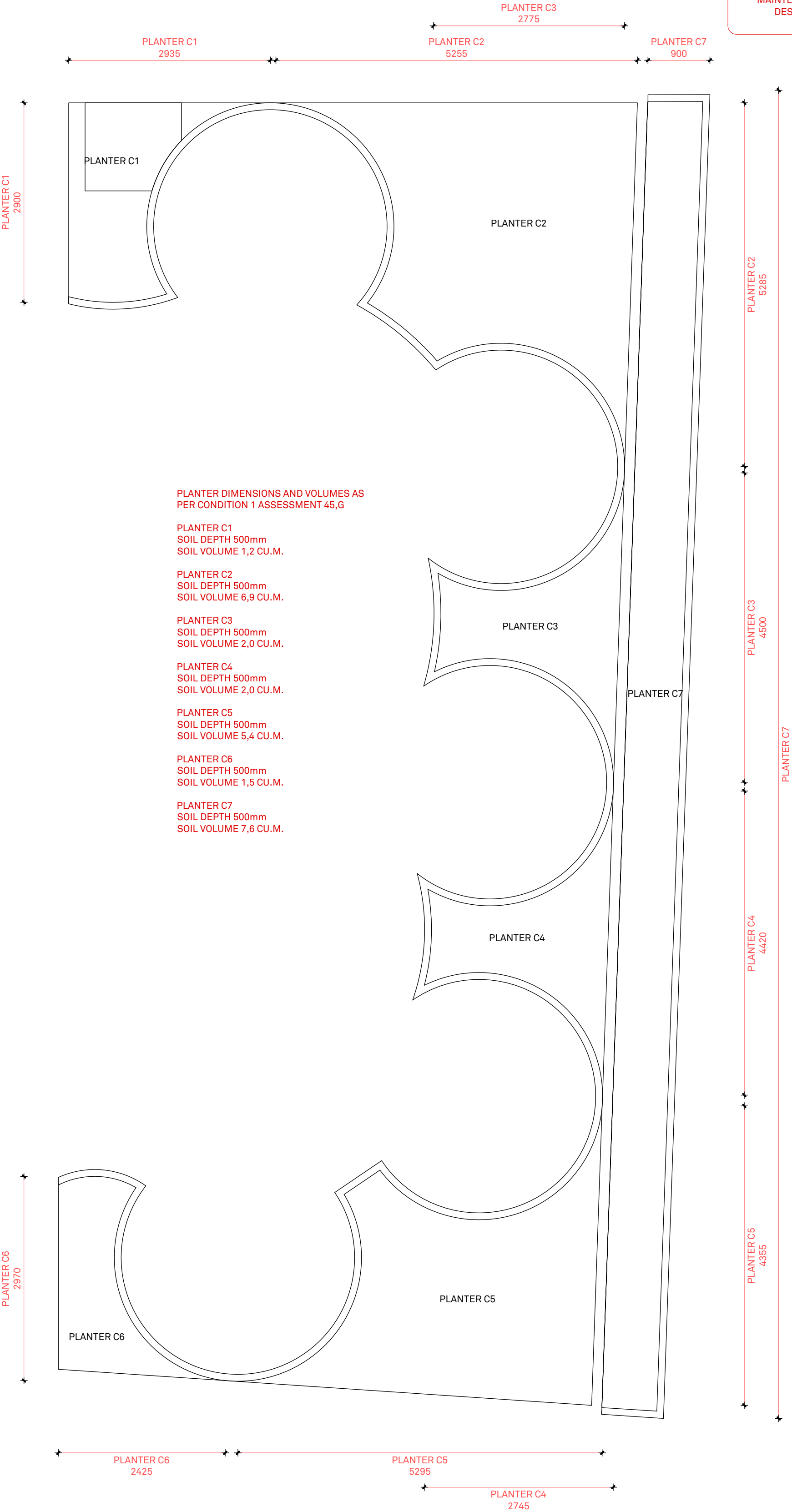
MASS PLANTED CASCADING EVERGREEN GROUNDCOVER, PARTHENOCCISSUS SIKKIMENSIS

MASS PLANTED CASCADING EVERGREEN GROUNDCOVER, PARTHENOCCISSUS SIKKIMENSIS

MASS PLANTED CASCADING EVERGREEN GROUNDCOVER, PARTHENOCCISSUS SIKKIMENSIS

MASS PLANTED CASCADING EVERGREEN GROUNDCOVER, PARTHENOCCISSUS SIKKIMENSIS

MASS PLANTED CASCADING EVERGREEN GROUNDCOVER, PARTHENOCCISSUS SIKKIMENSIS



PLANTER DIMENSIONS AND VOLUMES AS PER CONDITION 1 ASSESSMENT 45.G

PLANTER C1
SOIL DEPTH 500mm
SOIL VOLUME 1.2 CU.M.

PLANTER C2
SOIL DEPTH 500mm
SOIL VOLUME 6.9 CU.M.

PLANTER C3
SOIL DEPTH 500mm
SOIL VOLUME 2.0 CU.M.

PLANTER C4
SOIL DEPTH 500mm
SOIL VOLUME 2.0 CU.M.

PLANTER C5
SOIL DEPTH 500mm
SOIL VOLUME 5.4 CU.M.

PLANTER C6
SOIL DEPTH 500mm
SOIL VOLUME 1.5 CU.M.

PLANTER C7
SOIL DEPTH 500mm
SOIL VOLUME 7.6 CU.M.

PLANTING SCHEDULE | LEVEL 01

CODE:	BOTANICAL NAME:	COMMON NAME:	NATIVE / INDIGENOUS:	MATURE HEIGHT x SPREAD:	QUANTITY:	SIZE AT TIME OF PLANTING:	SPACING:	SHADE TOLERANCE:	COMMENTS:
SHRUBS:									
CDB	CORREA REFLEXA x PULCHELLA 'DUSKY BELLS'	NATIVE FUSCIA	NATIVE	0.5-1 x 1.5-3m	16	20cm	PLANTED AS SHOWN	PART TO FULL SHADE	
DO	DAPHNE ODOREA	WINTER DAPHNE		1-1.5 x 1-1.5m	9	25cm	PLANTED AS SHOWN	TOLERATES SHADE, MORNING LIGHT PREFERRED	
SC	SARCOCCOCCA CONFUSA	SWEET BOY		1.2 x 1m	13	20cm	PLANTED AS SHOWN	PART TO FULL SHADE	
PALMS & FERNS:									
HF	HOWEA FORSTERIANA	KENTIA PALM	NATIVE	8-15 x 5-8m	11	40cm	PLANTED AS SHOWN	SHADE TOLERANT	
RE	RHAPIS EXCELSA	RHAPIS PALM		3-5 x 1.5-3m	8	40cm	PLANTED AS SHOWN	WITHSTANDS DEEP SHADE	
CF	CRYPTOMIUM FALCATUM	JAPANESE HOLLY FERN		0.6 x 1m	16	40cm	PLANTED AS SHOWN	PART TO FULL SHADE	
HERBACEOUS PERENNIALS:									
MD	MONSTERA DELICIOSA	SPLIT LEAF PHILODENDRON		1.5-10 x 1-2m	13	40cm	PLANTED AS SHOWN	PART TO FULL SHADE	
AM	ALOCASIA MACRORRHIZA	ELEPHANT'S EAR	NATIVE	3.6-4.5 x 1.8-2.4m	24	40cm	PLANTED AS SHOWN	TOLERATES PART TO FULL SHADE	
PG	PHILODENDRON GOELDII	PHILODENDRON FUN BUN		0.5-0.9 x 1.2m	22	20cm	PLANTED AS SHOWN	SHADE TOLERANT, PREFER SOME INDIRECT LIGHT	
LIR	LIGULARIA REINFORMIS	TRACTOR SEAT PLANT		0.7-1 x 0.7-1m	10	14cm	PLANTED AS SHOWN	DAPPLED TO FULL SHADE	
FJ	FATSIA JAPONICA	JAPANESE ARALIA		1.5-4 x 1.5-4m	13	30cm	PLANTED AS SHOWN	PART TO FULL SHADE, INDIRECT LIGHT PREFERRED	
AN	ALPINIA NUTANS	DWARF CARDAMOM		1-1.5 x 1m	19	30cm	PLANTED AS SHOWN	TOLERATES FULL SHADE	
CASCADING GROUNDCOVER:									
PC	PHILODENDRON CORDATUM	HEART LEAF PHILODENDRON		0.7-1 x 0.7-1m	155	14cm	200mm C/C	SHADE TOLERANT, PREFER SOME INDIRECT LIGHT	
PS	PARTHENOCCISSUS SIKKIMENSIS	SIKKIM CREEPER		0.5-10 x 0.5-10m	34	14cm	300mm C/C	VERY SHADE TOLERANT	
TI	TETRAGONIA IMPLEXICOMA	BOWEN SPINACH	INDIGENOUS	0.2 x 2m	74	14cm	300mm C/C	FULL SUN TO PART SHADE	

GENERAL NOTES:
THIS DRAWING IS TO BE READ IN CONJUNCTION WITH ALL OTHER LANDSCAPE PLANS, RELEVANT NOTES & DOCUMENTATION, BUILDING CONSTRUCTION DRAWINGS & ENGINEERING DRAWINGS.
ALL DIMENSIONS AND LEVELS ARE TO BE CHECKED & CONFIRMED PRIOR TO COMMENCEMENT OF ANY WORKS.
ANY DISCREPANCIES ARE TO BE BROUGHT TO THE ATTENTION OF BARBER DESIGN.

REV	DATE	DESCRIPTION	REV	DATE	DESCRIPTION
01	22.11.22	PLANNING PERMIT CONDITIONS	-	-	-
02	16.05.23	REVISIONS FOR RE-SUBMISSION	-	-	-

PROJECT
28-32 ALBERT ROAD, SOUTH MELBOURNE
LANDSCAPE ARCHITECTURAL DRAWINGS

DRAWING NAME
GENERAL ARRANGEMENT PLAN
LEVEL 01 | BLACK & WHITE

DRAWING NO.
LA_101.1

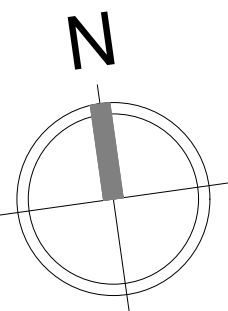
STATUS
TOWN PLANNING

SCALE
1:50 @ B1

REV
02

JOB NO.
21.488

DATE
MAY 2023



CLIENT
DCF

STRUCTURAL

ARCHITECT
ELENBERG FRASER

CIVIL

BARBER

web: www.barberdesign.com.au
email: sam@barberdesign.com.au
phone: +61 (3) 9510 8912
phone: +61 (0)4 17 358 357
mail: 1a Chatsworth Road, Prahran VIC 3181



PLANTER DIMENSIONS AND VOLUMES AS PER CONDITION 1 ASSESSMENT 45.G

PLANTER D1
SOIL DEPTH 300mm
SOIL VOLUME 29.4 CU.M.

PLANTER D2
SOIL DEPTH 300mm
SOIL VOLUME 4.1 CU.M.

PLANTER D3
SOIL DEPTH 300mm
SOIL VOLUME 0.7 CU.M.

PLANTER D4
SOIL DEPTH 300mm
SOIL VOLUME 0.3 CU.M.

PLANTER D5
SOIL DEPTH 300mm
SOIL VOLUME 0.1 CU.M.

PLANTER D6
SOIL DEPTH 300mm
SOIL VOLUME 0.5 CU.M.

PLANTER D7
SOIL DEPTH 300mm
SOIL VOLUME 0.03 CU.M.

PLANTER D3
2291

PLANTER D4
1009

PLANTER D5
812

PLANTER D6
1451

PLANTER D7
763

CITY OF PORT PHILLIP
PORT PHILLIP PLANNING SCHEME
This endorsed document complies with Condition No. 45 in
Planning Permit No: 1051/2017/A
20 pages
Date: 20/02/2024

PLANTING SCHEDULE | LEVEL 02

CODE	BOTANICAL NAME	COMMON NAME	NATIVE / INDIGENOUS	MATURE HEIGHT x SPREAD	QUANTITY	SIZE AT TIME OF PLANTING	SPACING	SHADE TOLERANCE	COMMENTS
SHRUBS:									
CDB	CORREA REFLEXA x PULCHELLA 'DUSKY BELLS'	NATIVE FUSCIA	NATIVE	0.5-1 x 1.5-3m	13	20cm	PLANTED AS SHOWN	PART TO FULL SHADE	
SC	SARCOCCOA CONFUSA	SWEET BOX		1.2 x 1m	28	20cm	PLANTED AS SHOWN	TOLERATES FULL SHADE	
GROUNDCOVER & CASCADING:									
VM/A	VINCA MINOR 'ALBA'	WHITE DWARF PERIWINKLE		0.2 x 0.45-1m	77	14cm	300mm C/C	SHADE HARDY, TOLERATES ALMOST FULL SHADE	
PS	PARTHENOCISSUS SIKKIMENSIS	SIKKIM CREEPER		0.5-10 x 0.5-10m	277	14cm	300mm C/C	VERY SHADE TOLERANT	
TI	TETRAGONIA IMPLEXICOMA	BOWER SPINACH	INDIGENOUS	0.2 x 2m	289	14cm	300mm C/C	FULL SUN TO PART SHADE	
VH	VIOLA HEDERACEA	NATIVE VIOLET	INDIGENOUS	0.2 x 0.5m	251	TUBE	200mm C/C	FULL SUN TO FULL SHADE	

GENERAL NOTES:

THIS DRAWING IS TO BE READ IN CONJUNCTION WITH ALL OTHER LANDSCAPE PLANS, RELEVANT NOTES & DOCUMENTATION, BUILDING CONSTRUCTION DRAWINGS & ENGINEERING DRAWINGS.

ALL DIMENSIONS AND LEVELS ARE TO BE CHECKED & CONFIRMED PRIOR TO COMMENCEMENT OF ANY WORKS.

ANY DISCREPANCIES ARE TO BE BROUGHT TO THE ATTENTION OF BARBER DESIGN.

REV	DATE	DESCRIPTION	REV	DATE	DESCRIPTION
01	22.11.22	PLANNING PERMIT CONDITIONS	-	-	-
02	16.05.23	REVISIONS FOR RE-SUBMISSION			

PROJECT

28-32 ALBERT ROAD, SOUTH MELBOURNE

LANDSCAPE ARCHITECTURAL DRAWINGS

STATUS

TOWN PLANNING

DRAWING NAME

GENERAL ARRANGEMENT PLAN

LEVEL 02 | COLOUR

SCALE

1:100 @ B1

REV

02

JOB NO.

21.488

DATE

MAY 2023

DRAWING NO.

LA_102

CLIENT

DCF

STRUCTURAL

ARCHITECT

ELENBERG FRASER

CIVIL

Copyright ©

BARBER

web: www.barberdesign.com.au

email: sam@barberdesign.com.au

phone: +61 (3) 9510 8912

phone: +61 (0)4 17 358 357

mail: 1a Chatsworth Road, Prahran VIC 3181



PLANTER DIMENSIONS AND VOLUMES AS PER CONDITION 1 ASSESSMENT 45.G

PLANTER D1
SOIL DEPTH 300mm
SOIL VOLUME 20.4 CU.M.

PLANTER D2
SOIL DEPTH 300mm
SOIL VOLUME 4.1 CU.M.

PLANTER D3
SOIL DEPTH 300mm
SOIL VOLUME 0.7 CU.M.

PLANTER D4
SOIL DEPTH 300mm
SOIL VOLUME 0.3 CU.M.

PLANTER D5
SOIL DEPTH 300mm
SOIL VOLUME 0.1 CU.M.

PLANTER D6
SOIL DEPTH 300mm
SOIL VOLUME 0.5 CU.M.

PLANTER D7
SOIL DEPTH 300mm
SOIL VOLUME 0.03 CU.M.

PLANTER D3
2291

PLANTER D4
2335

PLANTER D5
1142

PLANTER D6
2485

PLANTER D7
763

CITY OF PORT PHILLIP
PORT PHILLIP PLANNING SCHEME
This endorsed document complies with Condition No. 45 in
Planning Permit No. 1051/2017/A
20 pages
Date: 20/02/2024

PLANTING SCHEDULE | LEVEL 02

CODE:	BOTANICAL NAME:	COMMON NAME:	NATIVE / INDIGENOUS:	MATURE HEIGHT x SPREAD:	QUANTITY:	SIZE AT TIME OF PLANTING:	SPACING:	SHADE TOLERANCE:	COMMENTS:
SHRUBS:									
CDB	CORREA REFLEXA x PULCHELLA 'DUSKY BELLS'	NATIVE FUSCIA	NATIVE	0.5-1 x 1.5-3m	13	20cm	PLANTED AS SHOWN	PART TO FULL SHADE	
SC	SARCOCCOCA CONFUSA	SWEET BOX		1.2 x 1m	28	20cm	PLANTED AS SHOWN	TOLERATES FULL SHADE	
GROUNDCOVER & CASCADING:									
VMA	VINCA MINOR 'ALBA'	WHITE DWARF PERIWINKLE		0.2 x 0.45-1m	77	14cm	300mm C/C	SHADE HARDY, TOLERATES ALMOST FULL SHADE	
PS	PARTHENOCISSUS SIKKIMENSIS	SIKKIM CREEPER		0.5-10 x 0.5-10m	277	14cm	300mm C/C	VERY SHADE TOLERANT	
TI	TETRAGONIA IMPLEXICOMA	BOWER SPINACH	INDIGENOUS	0.2 x 2m	289	14cm	300mm C/C	FULL SUN TO PART SHADE	
VH	VIOLA HEDERACEA	NATIVE VIOLET	INDIGENOUS	0.2 x 0.5m	251	TUBE	200mm C/C	FULL SUN TO FULL SHADE	

GENERAL NOTES:

THIS DRAWING IS TO BE READ IN CONJUNCTION WITH ALL OTHER LANDSCAPE PLANS, RELEVANT NOTES & DOCUMENTATION, BUILDING CONSTRUCTION DRAWINGS & ENGINEERING DRAWINGS.

ALL DIMENSIONS AND LEVELS ARE TO BE CHECKED & CONFIRMED PRIOR TO COMMENCEMENT OF ANY WORKS.

ANY DISCREPANCIES ARE TO BE BROUGHT TO THE ATTENTION OF BARBER DESIGN.

REV	DATE	DESCRIPTION	REV	DATE	DESCRIPTION
01	22.11.22	PLANNING PERMIT CONDITIONS	-	-	-
02	16.05.23	REVISIONS FOR RE-SUBMISSION			

PROJECT

28-32 ALBERT ROAD, SOUTH MELBOURNE

LANDSCAPE ARCHITECTURAL DRAWINGS

STATUS

TOWN PLANNING

DRAWING NAME

GENERAL ARRANGEMENT PLAN

LEVEL 02 | BLACK & WHITE

SCALE

1:100 @ B1

REV

02

DRAWING NO.

LA_102.1

JOB NO.

21.488

DATE

MAY 2023

CLIENT

DCF

STRUCTURAL

ARCHITECT

ELENBERG FRASER

CIVIL

web: www.barberdesign.com.au

email: sam@barberdesign.com.au

phone: +61 (3) 9510 8912

phone: +61 (04) 17 358 357

mail: 1a Chatsworth Road, Prahran VIC 3181

Document Set ID: 9105162

Version: 1, Version Date: 14/05/2025

CITY OF PORT PHILLIP
PORT PHILLIP PLANNING SCHEME
This endorsed document complies with Condition No. 45 in
Planning Permit No: 1051/2017/A
20 pages
Date: 20/02/2024



GENERAL NOTES:		REV		DATE		DESCRIPTION		REV		DATE		DESCRIPTION		PROJECT		DRAWING NAME		DRAWING NO.				CLIENT		ARCHITECT			
THIS DRAWING IS TO BE READ IN CONJUNCTION WITH ALL OTHER LANDSCAPE PLANS, RELEVANT NOTES & DOCUMENTATION, BUILDING CONSTRUCTION DRAWINGS & ENGINEERING DRAWINGS		01		22.11.22		PLANNING PERMIT CONDITIONS		-		-		-		28-32 ALBERT ROAD, SOUTH MELBOURNE		GENERAL ARRANGEMENT PLAN		LA_103				DCF		ELENBERG FRASER			
ALL DIMENSIONS AND LEVELS ARE TO BE CHECKED & CONFIRMED PRIOR TO COMMENCEMENT OF ANY WORKS.		02		16.05.23		REVISIONS FOR RE-SUBMISSION								LANDSCAPE ARCHITECTURAL DRAWINGS		LEVEL 02 COLOUR				STRUCTURAL		CIVIL		web: www.barberdesign.com.au			
ANY DISCREPANCIES ARE TO BE BROUGHT TO THE ATTENTION OF BARBER DESIGN.														STATUS		SCALE		REV		JOB NO.		DATE		email: sam@barberdesign.com.au			
														TOWN PLANNING		1:100 @ B1		02		21.488		MAY 2023		phone: +61 (3) 9610 8912			
																								phone: +61 (0)417 358 357			
																								mail: 1a Chatsworth Road, Prahran VIC 3181			

FOR WSUD PERFORMANCE REFER
MAINTENANCE PLAN - WSUD, NJM
DESIGN 28.04.2023 REV. 01

Document Set ID: 9105162
Version: 1, Version Date: 14/05/2025

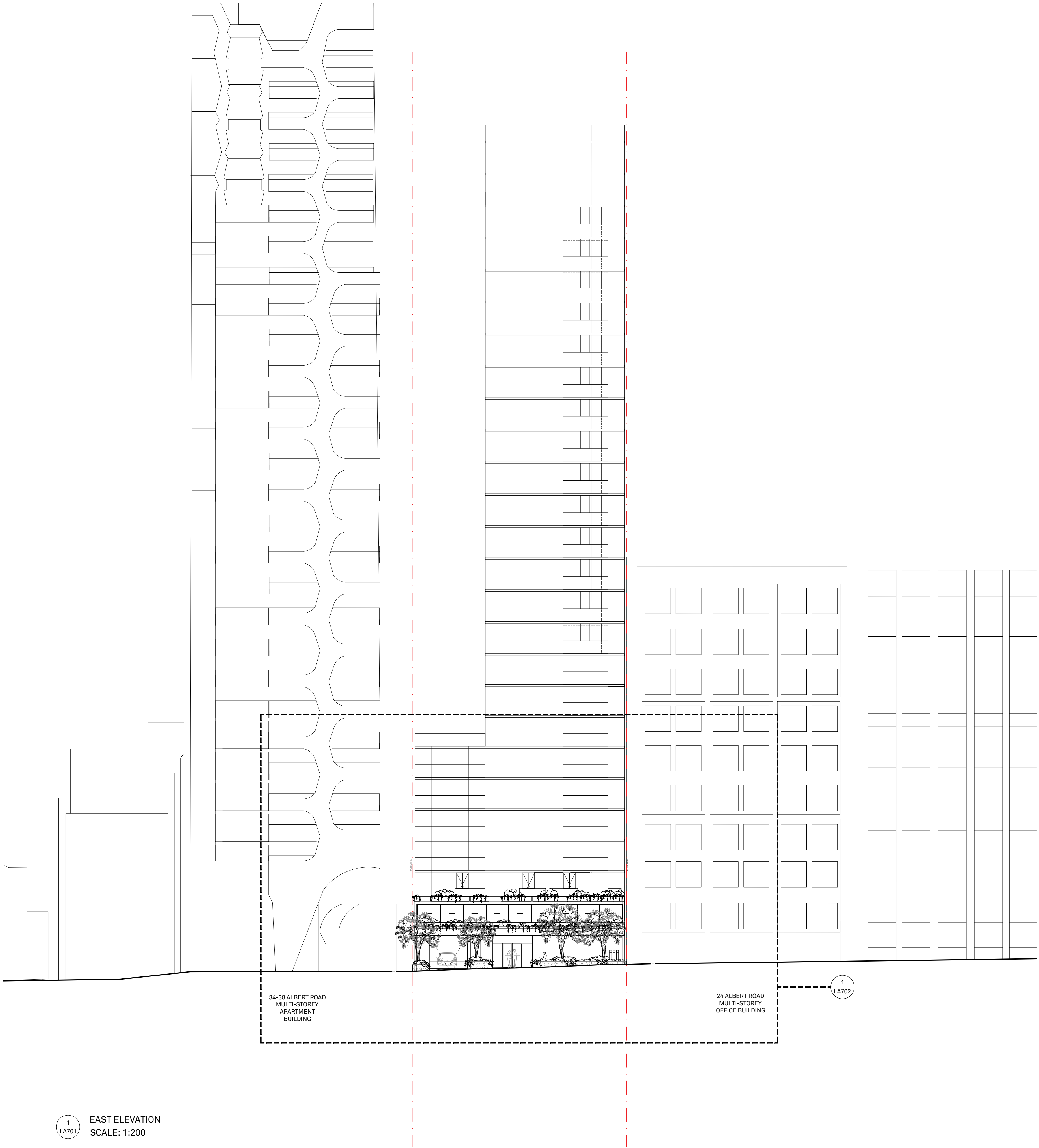


CITY OF PORT PHILLIP
PORT PHILLIP PLANNING SCHEME
This endorsed document complies with Condition No. 45 in
Planning Permit No: 1051/2017/A
20 pages
Date: 20/02/2024

<div>GENERAL NOTES:</div> <div>THIS DRAWING IS TO BE READ IN CONJUNCTION WITH ALL OTHER LANDSCAPE PLANS, RELEVANT NOTES & DOCUMENTATION, BUILDING CONSTRUCTION DRAWINGS & ENGINEERING DRAWINGS.</div> <div>ALL DIMENSIONS AND LEVELS ARE TO BE CHECKED & CONFIRMED PRIOR TO COMMENCEMENT OF ANY WORKS.</div> <div>ANY DISCREPANCIES ARE TO BE BROUGHT TO THE ATTENTION OF BARBER DESIGN.</div>	REV	DATE	DESCRIPTION	REV	DATE	DESCRIPTION	PROJECT	DRAWING NAME	DRAWING NO.	CLIENT DCF	ARCHITECT	CIVIL	<div>web: www.barberdesign.com.au email: sam@barberdesign.com.au phone: +61 (0)417 358 357 mail: 1a Chatsworth Road, Prahran VIC 3181</div>
	01	22.11.22	PLANNING PERMIT CONDITIONS	-	-	-	28-32 ALBERT ROAD, SOUTH MELBOURNE	EAST ELEVATION	LA_701		ELENBERG FRASER		
	02	16.05.23	REVISIONS FOR RE-SUBMISSION				LANDSCAPE ARCHITECTURAL DRAWINGS						
							STATUS	SCALE	REV				
							TOWN PLANNING	1:200 @ B1	02				
									JOB NO.				
									DATE				
									21.488	MAY 2023	STRUCTURAL		

CITY OF PORT PHILLIP
PORT PHILLIP PLANNING SCHEME

This endorsed document complies with Condition No. 45 in
Planning Permit No: 1051/2017/A
20 pages
Date: 20/02/2024



GENERAL NOTES:

THIS DRAWING IS TO BE READ IN CONJUNCTION WITH ALL OTHER LANDSCAPE PLANS, RELEVANT NOTES & DOCUMENTATION, BUILDING CONSTRUCTION DRAWINGS & ENGINEERING DRAWINGS.

ALL DIMENSIONS AND LEVELS ARE TO BE CHECKED & CONFIRMED PRIOR TO COMMENCEMENT OF ANY WORKS.

ANY DISCREPANCIES ARE TO BE BROUGHT TO THE ATTENTION OF BARBER DESIGN.

REV	DATE	DESCRIPTION	REV	DATE	DESCRIPTION
01	22.11.22	PLANNING PERMIT CONDITIONS	-	-	-
02	16.05.23	REVISIONS FOR RE-SUBMISSION			

PROJECT

28-32 ALBERT ROAD, SOUTH MELBOURNE

LANDSCAPE ARCHITECTURAL DRAWINGS

STATUS

TOWN PLANNING

DRAWING NAME

**EAST ELEVATION
BLACK AND WHITE**

SCALE

1:200 @ B1

REV

02

DRAWING NO.

LA_701.1

JOB NO.

21.488

DATE

MAY 2023

CLIENT

DCF

STRUCTURAL

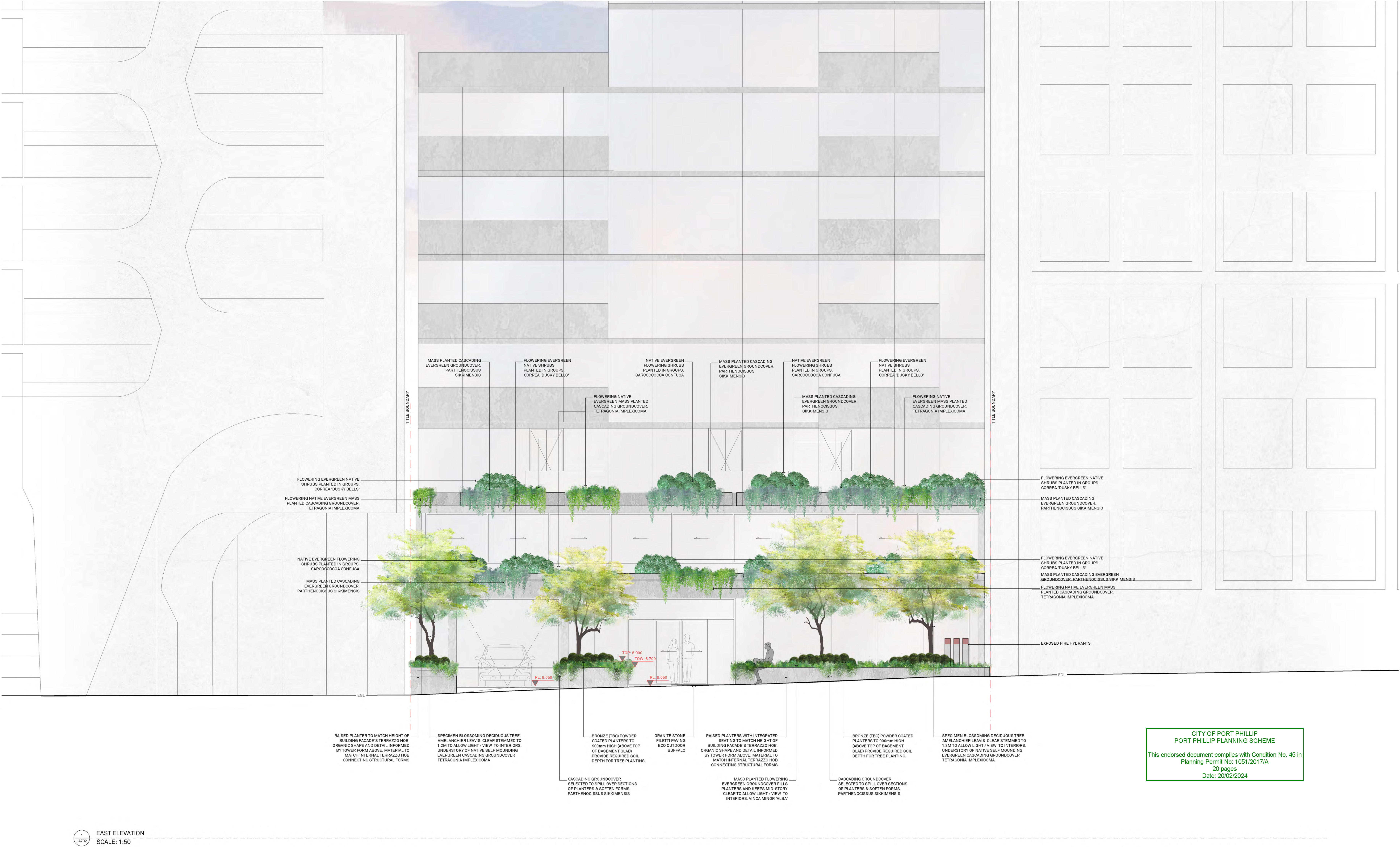
ARCHITECT

ELENBERG FRASER

CIVIL

BARBER

web: www.barberdesign.com.au
email: sam@barberdesign.com.au
phone: +61 (3) 9510 8912
phone: +61 (0)417 358 357
mail: 1a Chatsworth Road, Prahran VIC 3181



1 EAST ELEVATION
LA702 SCALE: 1:50

CITY OF PORT PHILLIP
PORT PHILLIP PLANNING SCHEME
This endorsed document complies with Condition No. 45 in
Planning Permit No: 1051/2017/A
20 pages
Date: 20/02/2024

GENERAL NOTES:
THIS DRAWING IS TO BE READ IN CONJUNCTION WITH ALL OTHER
LANDSCAPE PLANS, RELEVANT NOTES & DOCUMENTATION,
BUILDING CONSTRUCTION DRAWINGS & ENGINEERING DRAWINGS.
ALL DIMENSIONS AND LEVELS ARE TO BE CHECKED & CONFIRMED
PRIOR TO COMMENCEMENT OF ANY WORKS.
ANY DISCREPANCIES ARE TO BE BROUGHT TO THE ATTENTION OF
BARBER DESIGN.

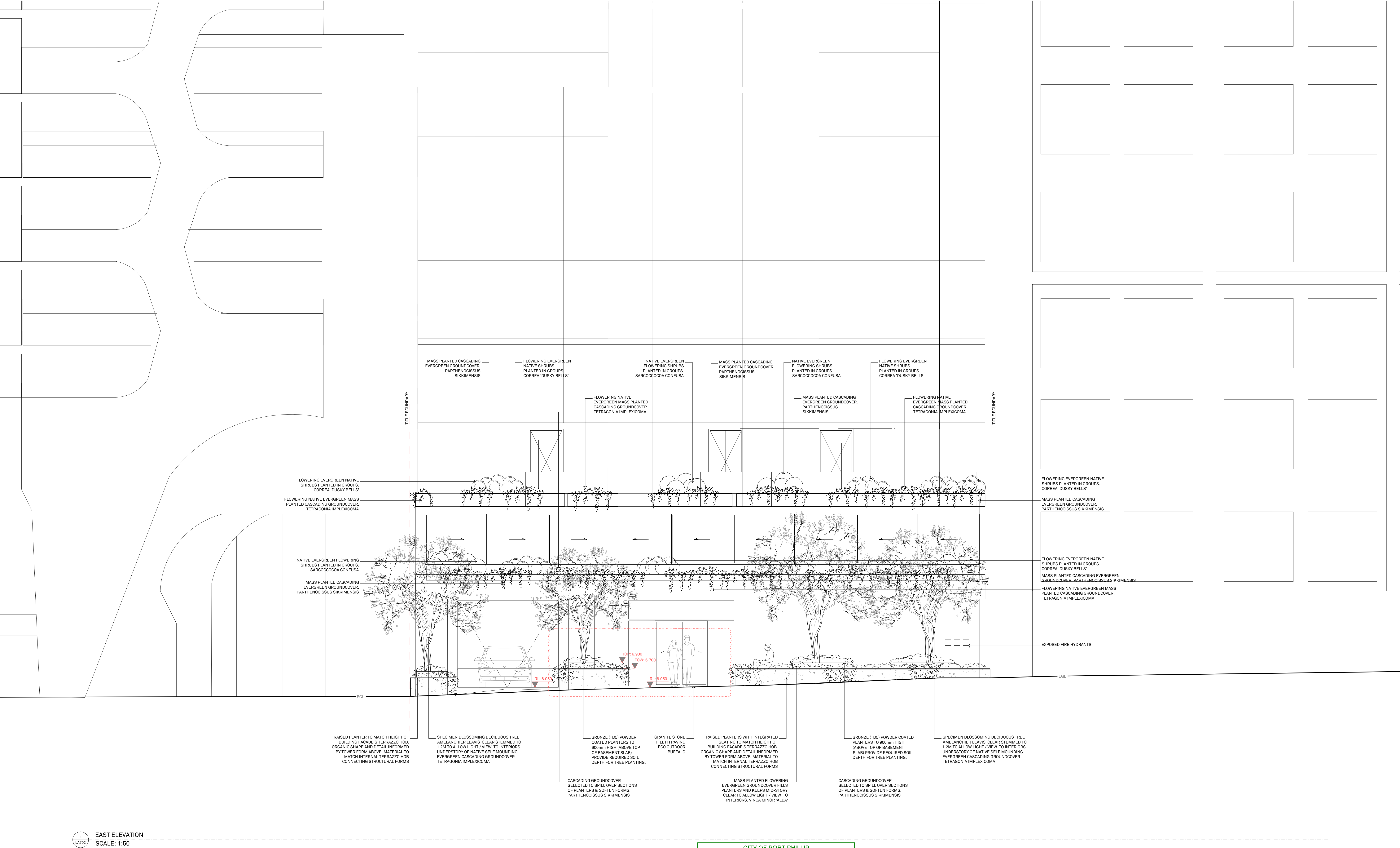
REV	DATE	DESCRIPTION	REV	DATE	DESCRIPTION
01	22.11.22	PLANNING PERMIT CONDITIONS	-	-	-
02	16.05.23	REVISIONS FOR RE-SUBMISSION			

PROJECT
28-32 ALBERT ROAD, SOUTH MELBOURNE
LANDSCAPE ARCHITECTURAL DRAWINGS
STATUS
TOWN PLANNING
DRAWING NAME
EAST ELEVATION
DRAWING NO.
LA_702
SCALE
1:50 @ B1
REV
02
JOB NO.
21.488
DATE
MAY 2023

CLIENT
DCF
STRUCTURAL

ARCHITECT
ELENBERG FRASER
CIVIL

BARBER
web: www.barberdesign.com.au
email: sam@barberdesign.com.au
phone: +61 (3) 9610 8912
phone: +61 (0)417 358 357
mail: 1a Chatsworth Road, Prahran VIC 3181



1
LA702

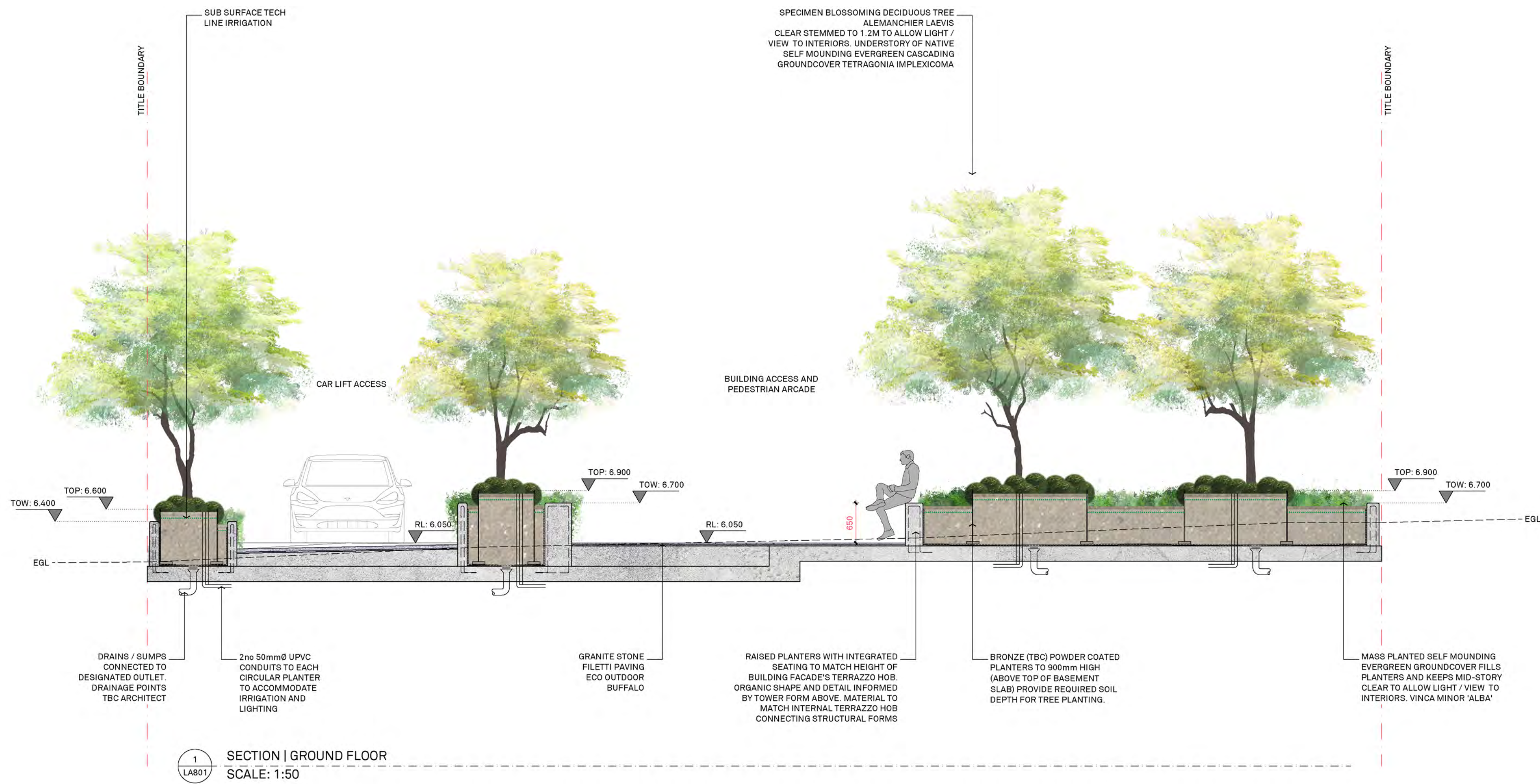
EAST ELEVATION
SCALE: 1:50

CITY OF PORT PHILLIP
PORT PHILLIP PLANNING SCHEME

This endorsed document complies with Condition No. 45 in
Planning Permit No. 1051/2017/A
20 pages
Date: 20/02/2024

GENERAL NOTES: THIS DRAWING IS TO BE READ IN CONJUNCTION WITH ALL OTHER LANDSCAPE PLANS, RELEVANT NOTES & DOCUMENTATION, BUILDING CONSTRUCTION DRAWINGS & ENGINEERING DRAWINGS. ALL DIMENSIONS AND LEVELS ARE TO BE CHECKED & CONFIRMED PRIOR TO COMMENCEMENT OF ANY WORKS. ANY DISCREPANCIES ARE TO BE BROUGHT TO THE ATTENTION OF BARBER DESIGN.	REV	DATE	DESCRIPTION	REV	DATE	DESCRIPTION
	01	22.11.22	PLANNING PERMIT CONDITIONS	-	-	-
	02	16.05.23	REVISIONS FOR RE-SUBMISSION			
PROJECT 28-32 ALBERT ROAD, SOUTH MELBOURNE LANDSCAPE ARCHITECTURAL DRAWINGS	DRAWING NAME EAST ELEVATION BLACK AND WHITE	DRAWING NO. LA_702.1	CLIENT DCF	ARCHITECT ELENBERG FRASER	BARBER web: www.barberdesign.com.au email: sam@barberdesign.com.au phone: +61 (3) 9510 8912 phone: +61 (0)417 358 357 mail: 1a Chatsworth Road, Prahran VIC 3181	
STATUS TOWN PLANNING	SCALE 1:50 @ B1	REV 02	JOB NO. 21.488	DATE MAY 2023		

CITY OF PORT PHILLIP
PORT PHILLIP PLANNING SCHEME
This endorsed document complies with Condition No. 45 in
Planning Permit No: 1051/2017/A
20 pages
Date: 20/02/2024



DESIGN INTENT ONLY.
ALL CONCRETE, STEEL AND
OTHER STRUCTURAL ELEMENTS
OF THIS DRAWING ARE SUBJECT
TO SPECIFICATION BY
STRUCTURAL ENGINEER

GRADIENTS TO S/W OUTLET PIPES
BY CIVIL ENGINEER. INVERT LEVELS
BY CIVIL ENGINEER

FOR WSUD PERFORMANCE REFER
MAINTENANCE PLAN - WSUD, NJM
DESIGN 28.04.2023 REV. 01 AS PER
CONDITION 1 ASSESSMENT 45J

GENERAL NOTES:
THIS DRAWING IS TO BE READ IN CONJUNCTION WITH ALL OTHER
LANDSCAPE PLANS, RELEVANT NOTES & DOCUMENTATION,
BUILDING CONSTRUCTION DRAWINGS & ENGINEERING DRAWINGS.
ALL DIMENSIONS AND LEVELS ARE TO BE CHECKED & CONFIRMED
PRIOR TO COMMENCEMENT OF ANY WORKS.
ANY DISCREPANCIES ARE TO BE BROUGHT TO THE ATTENTION OF
BARBER DESIGN.

REV	DATE	DESCRIPTION	REV	DATE	DESCRIPTION
01	22.11.22	PLANNING PERMIT CONDITIONS	-	-	-
02	16.05.23	REVISIONS FOR RE-SUBMISSION			

PROJECT
28-32 ALBERT ROAD, SOUTH MELBOURNE
LANDSCAPE ARCHITECTURAL DRAWINGS

STATUS
TOWN PLANNING

DRAWING NAME
SECTION DETAIL
COLOUR

SCALE
AS SHOWN @ B1

REV
02

DRAWING NO.
LA_801

JOB NO.
21.488

DATE
MAY 2023

CLIENT
DCF

STRUCTURAL

ARCHITECT
ELENBERG FRASER

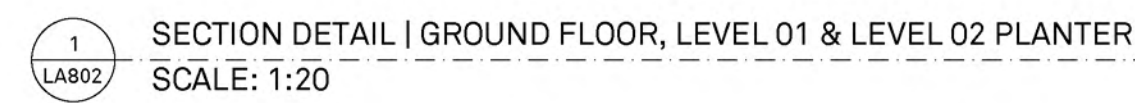
CIVIL

BARBER

web: www.barberdesign.com.au
email: sam@barberdesign.com.au
phone: +61 (3) 9610 8912
phone: +61 (0)417 358 357
mail: 1a Chatsworth Road, Prahran VIC 3181

GRADIENTS TO S/W OUTLET PIPES
BY CIVIL ENGINEER. INVERT LEVELS
BY CIVIL ENGINEER

FOR WSUD PERFORMANCE REFER
MAINTENANCE PLAN - WSUD, NJM
DESIGN 28.04.2023 REV. 01 AS PER
CONDITION 1 ASSESSMENT 45J



GENERAL NOTES:	REV	DATE	DESCRIPTION	REV	DATE	DESCRIPTION
THIS DRAWING IS TO BE READ IN CONJUNCTION WITH ALL OTHER LANDSCAPE PLANS, RELEVANT NOTES & DOCUMENTATION, BUILDING CONSTRUCTION DRAWINGS & ENGINEERING DRAWINGS. ALL DIMENSIONS AND LEVELS ARE TO BE CHECKED & CONFIRMED PRIOR TO COMMENCEMENT OF ANY WORKS. ANY DISCREPANCIES ARE TO BE BROUGHT TO THE ATTENTION OF BARBER DESIGN.	01	22.11.22	PLANNING PERMIT CONDITIONS	-	-	-
	02	16.05.23	REVISIONS FOR RE-SUBMISSION			

web: www.barberdesign.com.au
email: sam@barberdesign.com.au
phone: +61 (3) 9510 8912
phone: +61 (0)417 358 357
mail: 1a Chatsworth Road, Prahran VIC 3181



SECTION DETAIL | GROUND FLOOR, LEVEL 01 PLANTER & LEVEL 02 PLANTER
SCALE: 1:20

<div>GENERAL NOTES:</div> <div>THIS DRAWING IS TO BE READ IN CONJUNCTION WITH ALL OTHER LANDSCAPE PLANS, RELEVANT NOTES & DOCUMENTATION, BUILDING CONSTRUCTION DRAWINGS & ENGINEERING DRAWINGS.</div> <div>ALL DIMENSIONS AND LEVELS ARE TO BE CHECKED & CONFIRMED PRIOR TO COMMENCEMENT OF ANY WORKS.</div> <div>ANY DISCREPANCIES ARE TO BE BROUGHT TO THE ATTENTION OF BARBER DESIGN.</div>	REV	DATE	DESCRIPTION	REV	DATE	DESCRIPTION	<div>PROJECT</div> <div>28-32 ALBERT ROAD, SOUTH MELBOURNE</div> <div>LANDSCAPE ARCHITECTURAL DRAWINGS</div>	<div>DRAWING NAME</div> <div>SECTION DETAIL COLOUR</div>	<div>DRAWING NO.</div> <div>LA_803</div>	<div>CLIENT</div> <div>DCF</div>	<div>ARCHITECT</div> <div>ELENBERG FRASER</div> <div>BARBER</div>
	01	22.11.22	PLANNING PERMIT CONDITIONS	-	-	-					
	02	16.05.23	REVISIONS FOR RE-SUBMISSION								

DESIGN INTENT ONLY.
ALL CONCRETE, STEEL AND
OTHER STRUCTURAL ELEMENTS
OF THIS DRAWING ARE SUBJECT
TO SPECIFICATION BY
STRUCTURAL ENGINEER

GRADIENTS TO S/W OUTLET PIPES
BY CIVIL ENGINEER. INVERT LEVELS
BY CIVIL ENGINEER

FOR WSUD PERFORMANCE REFER
MAINTENANCE PLAN - WSUD NUM
DESIGN 28.04.2023 REV. 01 AS PER
CONDITION 1 ASSESSMENT 45J



CITY OF PORT PHILLIP
PORT PHILLIP PLANNING SCHEME
This endorsed document complies with Condition No. 45 in
Planning Permit No: 1051/2017/A
20 pages
Date: 20/02/2024

1
LA804

SECTION DETAIL | GROUND FLOOR, LEVEL 01 PLANTER & LEVEL 02 PLANTER
SCALE: 1:20

<div>GENERAL NOTES:</div> <div>THIS DRAWING IS TO BE READ IN CONJUNCTION WITH ALL OTHER LANDSCAPE PLANS, RELEVANT NOTES & DOCUMENTATION, BUILDING CONSTRUCTION DRAWINGS & ENGINEERING DRAWINGS.</div> <div>ALL DIMENSIONS AND LEVELS ARE TO BE CHECKED & CONFIRMED PRIOR TO COMMENCEMENT OF ANY WORKS.</div> <div>ANY DISCREPANCIES ARE TO BE BROUGHT TO THE ATTENTION OF BARBER DESIGN.</div>	REV	DATE	DESCRIPTION	REV	DATE	DESCRIPTION	<div>PROJECT</div> <div>28-32 ALBERT ROAD, SOUTH MELBOURNE</div> <div>LANDSCAPE ARCHITECTURAL DRAWINGS</div>	<div>DRAWING NAME</div> <div>SECTION DETAIL COLOUR</div>	<div>DRAWING NO.</div> <div>LA_804</div>	<div>CLIENT</div> <div>DCF</div>	<div>ARCHITECT</div> <div>ELENBERG FRASER</div>	<div>BARBER</div> <div>web: www.barberdesign.com.au</div> <div>email: sam@barberdesign.com.au</div> <div>phone: +61 (3) 9510 8912</div> <div>phone: +61 (0)417 358 357</div> <div>mail: 1a Chatsworth Road, Prahran VIC 3181</div>	
	01	22.11.22	PLANNING PERMIT CONDITIONS	-	-	-							
	02	16.05.23	REVISIONS FOR RE-SUBMISSION										
							<div>STATUS</div> <div>TOWN PLANNING</div>	<div>SCALE</div> <div>AS SHOWN @B1</div>	<div>REV</div> <div>02</div>	<div>JOB NO.</div> <div>21.488</div>	<div>DATE</div> <div>MAY 2023</div>	<div>STRUCTURAL</div>	<div>CIVIL</div>