



View 03 - Photograph with Endorsed and Proposed Building Outlines

- Endorsed built form – Unoccluded silhouette (excludes vegetation)
- Endorsed built form – Silhouette that is occluded by existing built form (excludes vegetation)
- Proposed built form – Unoccluded silhouette (excludes vegetation)
- Proposed built form – Silhouette that is occluded by existing built form (excludes vegetation)



Orbit Solutions Pty Ltd

PO Box 736
Port Melbourne
VIC 3207

vic@orbitsolutions.com.au
www.orbitsolutions.com.au

+61 3 9690 4488

Memberships & Associations



Australian
Institute of
Architects



Victorian Planning &
Environmental Law Association

Copyright of this document and the materials included in it are owned by Orbit Solutions Pty Ltd, and we reserve all rights. You may not copy or distribute any text materials or any photography, illustration, artwork or other graphic material contained for any use without first obtaining the written permission of a Director of Orbit Solutions Pty Ltd.

VCAT Ref No:

TBC

Site Address:

146-150 Bridport Street,
Albert Park VIC 3206

For:

JD Bridport Street 1 Pty Ltd

Section:

03

PHOTOMONTAGE 03

Date Issued:

04 April 2025

Project No:

V25002

Revision:

-



View 03 - Endorsed Built Form



Orbit Solutions Pty Ltd

PO Box 736
Port Melbourne
VIC 3207

vic@orbitsolutions.com.au
www.orbitsolutions.com.au

+61 3 9690 4488

Memberships & Associations



Copyright of this document and the materials included in it are owned by Orbit Solutions Pty Ltd, and we reserve all rights. You may not copy or distribute any text materials or any photography, illustration, artwork or other graphic material contained for any use without first obtaining the written permission of a Director of Orbit Solutions Pty Ltd.

VCAT Ref No: **TBC**

Site Address:
**146-150 Bridport Street,
Albert Park VIC 3206**

For:
JD Bridport Street 1 Pty Ltd

Section: **04**
PHOTOMONTAGE 03

Date Issued: 04 April 2025

Project No: V25002

Revision: -





180° 190° 200° 210° 220° 230° 240° 250° 260°

View 03 - Endorsed Built Form with Landscaping



Orbit Solutions Pty Ltd

PO Box 736
Port Melbourne
VIC 3207

vic@orbitsolutions.com.au
www.orbitsolutions.com.au

+61 3 9690 4488

Memberships & Associations



Copyright of this document and the materials included in it are owned by Orbit Solutions Pty Ltd, and we reserve all rights. You may not copy or distribute any text materials or any photography, illustration, artwork or other graphic material contained for any use without first obtaining the written permission of a Director of Orbit Solutions Pty Ltd.

VCAT Ref No: **TBC**

Site Address:
**146-150 Bridport Street,
Albert Park VIC 3206**

For:
JD Bridport Street 1 Pty Ltd

Section: **05**
PHOTOMONTAGE 03

Date Issued: 04 April 2025

Project No: V25002

Revision: -



View 03 - Endorsed Built Form with Landscaping & Endorsed and Proposed Building Outlines

- Endorsed built form – Unoccluded silhouette (excludes vegetation)
- Endorsed built form – Silhouette that is occluded by existing built form (excludes vegetation)
- Proposed built form – Unoccluded silhouette (excludes vegetation)
- Proposed built form – Silhouette that is occluded by existing built form (excludes vegetation)



Orbit Solutions Pty Ltd

PO Box 736
Port Melbourne
VIC 3207

vic@orbitsolutions.com.au
www.orbitsolutions.com.au

+61 3 9690 4488

Memberships & Associations



Australian
Institute of
Architects



Victorian Planning &
Environmental Law Association

Copyright of this document and the materials included in it are owned by Orbit Solutions Pty Ltd, and we reserve all rights. You may not copy or distribute any text materials or any photography, illustration, artwork or other graphic material contained for any use without first obtaining the written permission of a Director of Orbit Solutions Pty Ltd.

VCAT Ref No:

TBC

Site Address:

146-150 Bridport Street,
Albert Park VIC 3206

For:

JD Bridport Street 1 Pty Ltd

Section:

06

PHOTOMONTAGE 03

Date Issued:

04 April 2025

Project No:

V25002

Revision:

-



View 03 - Proposed Built Form



Orbit Solutions Pty Ltd

PO Box 736
Port Melbourne
VIC 3207

vic@orbitsolutions.com.au
www.orbitsolutions.com.au

+61 3 9690 4488

Memberships & Associations



Copyright of this document and the materials included in it are owned by Orbit Solutions Pty Ltd, and we reserve all rights. You may not copy or distribute any text materials or any photography, illustration, artwork or other graphic material contained for any use without first obtaining the written permission of a Director of Orbit Solutions Pty Ltd.

VCAT Ref No: **TBC**

Site Address:
**146-150 Bridport Street,
Albert Park VIC 3206**

For:
JD Bridport Street 1 Pty Ltd

Section: **07**
PHOTOMONTAGE 03

Date Issued: 04 April 2025
Project No: V25002
Revision: -





View 03 - Proposed Built Form with Landscaping



Orbit Solutions Pty Ltd

PO Box 736
Port Melbourne
VIC 3207

vic@orbitsolutions.com.au
www.orbitsolutions.com.au

+61 3 9690 4488

Memberships & Associations



Copyright of this document and the materials included in it are owned by Orbit Solutions Pty Ltd, and we reserve all rights. You may not copy or distribute any text materials or any photography, illustration, artwork or other graphic material contained for any use without first obtaining the written permission of a Director of Orbit Solutions Pty Ltd.

VCAT Ref No: **TBC**

Site Address:
**146-150 Bridport Street,
Albert Park VIC 3206**

For:
JD Bridport Street 1 Pty Ltd

Section: **08
PHOTOMONTAGE 03**

Date Issued: 04 April 2025

Project No: V25002

Revision: -





View 03 - Proposed Built Form with Landscaping & Endorsed and Proposed Building Outlines

- Endorsed built form – Unoccluded silhouette (excludes vegetation)
- Endorsed built form – Silhouette that is occluded by existing built form (excludes vegetation)
- Proposed built form – Unoccluded silhouette (excludes vegetation)
- Proposed built form – Silhouette that is occluded by existing built form (excludes vegetation)



Orbit Solutions Pty Ltd

PO Box 736
Port Melbourne
VIC 3207

vic@orbitsolutions.com.au
www.orbitsolutions.com.au

+61 3 9690 4488

Memberships & Associations



Copyright of this document and the materials included in it are owned by Orbit Solutions Pty Ltd, and we reserve all rights. You may not copy or distribute any text materials or any photography, illustration, artwork or other graphic material contained for any use without first obtaining the written permission of a Director of Orbit Solutions Pty Ltd.

VCAT Ref No: TBC

Site Address:
146-150 Bridport Street,
Albert Park VIC 3206

For:
JD Bridport Street 1 Pty Ltd

Section:
09
PHOTOMONTAGE 03

Date Issued:
04 April 2025

Project No:
V25002

Revision:
-



Orbit Solutions Pty Ltd

PO Box 736
Port Melbourne
VIC 3207

vic@orbitsolutions.com.au
www.orbitsolutions.com.au

+61 3 9690 4488

Memberships & Associations



Copyright of this document and the materials included in it are owned by Orbit Solutions Pty Ltd, and we reserve all rights. You may not copy or distribute any text materials or any photography, illustration, artwork or other graphic material contained for any use without first obtaining the written permission of a Director of Orbit Solutions Pty Ltd.

VCAT Ref No: TBC

Site Address: 146-150 Bridport Street, Albert Park VIC 3206

For: JD Bridport Street 1 Pty Ltd

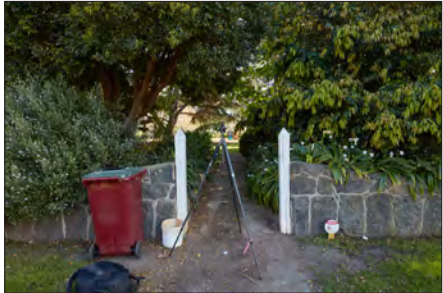
Section: 01
PHOTOMONTAGE 04

Date Issued: 04 April 2025
Project No: V25002
Revision: -



View 04 - Original Photograph @20mm

PHOTOGRAPH DETAILS		EQUIPMENT SPECIFICATIONS	
Location description:	Entrance to St Vincents Gardens, in St Vincents Place South, on gravel path	Camera:	Canon 5DSR Full Frame
Date & time taken:	10:03am EST on 25/9/2023	Lens:	Sigma 20mm f 1 / 4 DG HSM Art Lens
Height from ground:	1.65m	Focal length:	20mm
Distance to site:	98m	Field of view (FOV):	84.0 deg (horizontal)





Orbit Solutions Pty Ltd

PO Box 736
Port Melbourne
VIC 3207

vic@orbitsolutions.com.au
www.orbitsolutions.com.au

+61 3 9690 4488

Memberships & Associations



THIS IS NOT A PHOTOGRAPH

It is a Point Cloud Survey of the camera position by the licensed land surveyor.

This is used to precisely locate and orient the 3D camera to match the photograph.

See Statement of Evidence.

Copyright of this document and the materials included in it are owned by Orbit Solutions Pty Ltd, and we reserve all rights. You may not copy or distribute any text materials or any photography, illustration, artwork or other graphic material contained for any use without first obtaining the written permission of a Director of Orbit Solutions Pty Ltd.

VCAT Ref No:

TBC

Site Address:

146-150 Bridport Street,
Albert Park VIC 3206

For:

JD Bridport Street 1 Pty Ltd

Section:

02

PHOTOMONTAGE 04

Date Issued:

04 April 2025

Project No:

V25002

Revision:

-



View 04 - AlignView with Point Cloud Dataset

FIELD WORK DETAILS

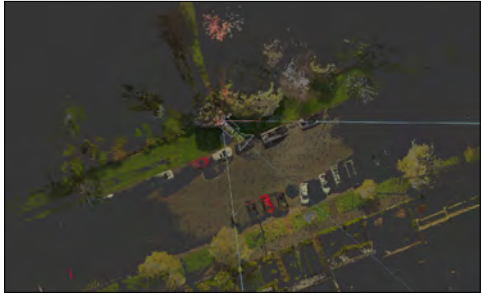
Easting:	319974.30
Northing:	5809999.96
Date taken:	29/09/2023
Ground (RL):	6.4m
Height from ground:	1.65m
LIDAR Scanner:	Leica Cyclone Register 360



LEGEND

- Field of view
- Viewing direction
- Proposed built form – Unoccluded silhouette (excludes vegetation)
- Proposed built form – Silhouette that is occluded by existing built form (excludes vegetation)

Point Cloud Survey Top View





View 04 - Photograph with Endorsed and Proposed Building Outlines

- Endorsed built form – Unoccluded silhouette (excludes vegetation)
- Endorsed built form – Silhouette that is occluded by existing built form (excludes vegetation)
- Proposed built form – Unoccluded silhouette (excludes vegetation)
- Proposed built form – Silhouette that is occluded by existing built form (excludes vegetation)



Orbit Solutions Pty Ltd

PO Box 736
Port Melbourne
VIC 3207

vic@orbitsolutions.com.au
www.orbitsolutions.com.au

+61 3 9690 4488

Memberships & Associations



Copyright of this document and the materials included in it are owned by Orbit Solutions Pty Ltd, and we reserve all rights. You may not copy or distribute any text materials or any photography, illustration, artwork or other graphic material contained for any use without first obtaining the written permission of a Director of Orbit Solutions Pty Ltd.

VCAT Ref No: TBC

Site Address:
146-150 Bridport Street,
Albert Park VIC 3206

For:
JD Bridport Street 1 Pty Ltd

Section:
03
PHOTOMONTAGE 04

Date Issued:
04 April 2025

Project No:
V25002

Revision:
-



View 04 - Endorsed Built Form



Orbit Solutions Pty Ltd

PO Box 736
Port Melbourne
VIC 3207

vic@orbitsolutions.com.au
www.orbitsolutions.com.au

+61 3 9690 4488

Memberships & Associations



Copyright of this document and the materials included in it are owned by Orbit Solutions Pty Ltd, and we reserve all rights. You may not copy or distribute any text materials or any photography, illustration, artwork or other graphic material contained for any use without first obtaining the written permission of a Director of Orbit Solutions Pty Ltd.

VCAT Ref No: **TBC**

Site Address:
**146-150 Bridport Street,
Albert Park VIC 3206**

For:
JD Bridport Street 1 Pty Ltd

Section: **04**
PHOTOMONTAGE 04

Date Issued: **04 April 2025**

Project No: **V25002**

Revision: **-**





View 04 - Endorsed Built Form with Landscaping



Orbit Solutions Pty Ltd

PO Box 736
Port Melbourne
VIC 3207

vic@orbitsolutions.com.au
www.orbitsolutions.com.au

+61 3 9690 4488

Memberships & Associations



Copyright of this document and the materials included in it are owned by Orbit Solutions Pty Ltd, and we reserve all rights. You may not copy or distribute any text materials or any photography, illustration, artwork or other graphic material contained for any use without first obtaining the written permission of a Director of Orbit Solutions Pty Ltd.

VCAT Ref No: **TBC**

Site Address:
**146-150 Bridport Street,
Albert Park VIC 3206**

For:
JD Bridport Street 1 Pty Ltd

Section: **05**
PHOTOMONTAGE 04

Date Issued: 04 April 2025

Project No: V25002

Revision: -

