



8.2

CLOSURE OF FERRARS ST (NORTHERN SECTION), GLADSTONE ST (EASTERN SECTION) AND RAILWAY PLACE (NORTHERN SECTION)

WARD:

GATEWAY

GENERAL MANAGER:

CAROL JEFFS, COMMUNITY DEVELOPMENT

PREPARED BY:

MIKE COULTAS, SENIOR PROJECT MANAGER

STEFAN MITRIK, COORDINATOR TRANSPORT SAFETY ENGINEERING

ANTHONY TRAILL, MANAGER OPEN SPACE AND RECREATION

MADELEINE WHITE, COMMUNICATIONS & ENGAGEMENT OFFICER

TRIM FILE NO:

66/18/33

ATTACHMENTS:

Nil

PURPOSE

The purpose of this report is to

- (a) commence the road closure process for Railway Place, Ferrars Street and Gladstone Street in accordance with the Local Government Act 1989, Section 207 (Power of Council over traffic), Schedule 11, Clause 9 (Power to place obstructions or barriers on a road permanently); and
- (b) inform the community of the road closure process and provide an opportunity for the community to make submissions for Council's consideration between 26 September and 23 October 2017.



I. RECOMMENDATION

That Council:

- I.1 Proceeds with the statutory process for a
 - a) permanent road closure of Ferrars Street, between Buckhurst Street and Gladstone Street (northern section) South Melbourne maintaining access to properties in Surveyors Place; and
 - b) permanent road closure of Gladstone Street, between Kerr Street and Ferrars Street, South Melbourne;in accordance section 207, schedule 11, clause 9 of the Local Government Act 1989.
- I.2 Notes that on 13 September 2016, Council resolved to commence the process for the permanent road closure of the northern section and proposed road widening of the southern section of Railway Place, South Melbourne subject to Vic Track lot approval.
- I.3 Gives public notice to affected stakeholders of the proposal for the road closures of the following roads:
 - (a) Ferrars Street (Between Buckhurst Street and Gladstone Street);
 - (b) Gladstone Street (Between Kerr Street and Ferrars Street); and
 - (c) Railway Place (Between Douglas Street and the southern border of the school on Railway Place)and invites submissions in accordance with Section 223 of the Local Government Act 1989.
- I.4 Resolves to hear and consider any submissions received pursuant to Section 223 of the Local Government Act 1989 at a Council meeting to be held on 15 November 2017.

2. BACKGROUND

- 2.1 On 13 September 2016, Council requested that the Minister for Planning prepare and approve Amendment C135 to the Port Phillip Planning Scheme, pursuant to section 20(4) of the Planning and Environment Act 1987 to:
 - a) Rezone land at 2-4 Buckhurst Street, Ferrars Street (between Douglas and Gladstone Streets) and Gladstone Street (from Ferrars Street to Kerr Street) and part of Kerr Street, from the Capital City Zone (CCZ) to a Public Park and Recreation Zone (PPRZ).
 - b) Apply the Road Closure Overlay (RXO) to legally close Ferrars Street (between Douglas and Gladstone Streets) and Gladstone Street (from Ferrars Street to Kerr Street) and to narrow Kerr Street.
 - c) Include an Incorporated Document titled 'Montague Community Park and associated Streetscape Works', which facilitates the delivery of the Montague Community Park and associated streetscape works along Buckhurst Street (between Kerr Street and Ferrars Street), Douglas Street and Ferrars Street (between Buckhurst Street and Thistlethwaite Street), as part of the Ferrars Street Education and Community Precinct Proposed Works (June 2016).

- 2.2 On 13 September 2016, Council resolved to commence the process to close Railway Place in accordance with Section 207 of the Local Government Act.
- 2.3 On 13 December 2016, Council noted that the closure of Railway Place will only proceed as part of the Streetscape Works if agreement is reached with the Victorian Government to use VicTrack land needed to support the road closure.

3. KEY INFORMATION

Montague Community Park – Road Closures

- 3.1 On 05 September 2017, and in response to point 2.1 (b), the Victorian Government requested that the Council undertake the road closures for Montague Community Park using the Local Government Act (See Figure 1).

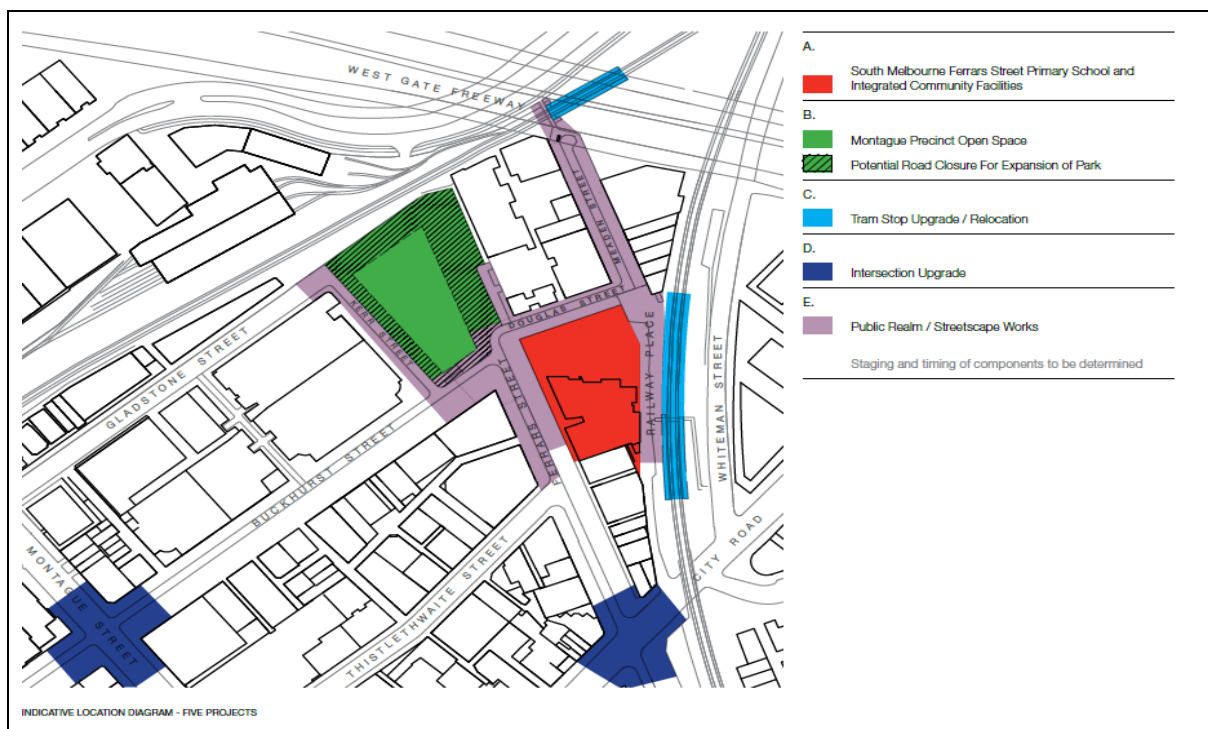


Figure 1 – Extent of park road closure (shaded Green)

- 3.2 Following extensive community consultation and Council’s endorsement of the revised streetscape works on 5 April 2017, it is proposed that Council resolve to close the surrounding roads using the Local Government Act process, maximising the area of land for the park site and enabling the commencement of the remediation and development of Stage 1 of the park.
- 3.3 Utilising the Local Government Act for the road closure process, simplifies the overall planning changes, prior to park development. Council will progress the road closure of Railway Place and the surrounding roads of the park simultaneously.

Vic Track Approval and Proposed Changes to Railway Place

- 3.4 Railway Place is a cobblestone laneway running roughly north-south adjacent to the Route 96 light rail line between Douglas Street and City Road, South Melbourne.
- 3.5 Council has identified the opportunity to make changes to the traffic configuration and public realm on Railway Place to improve safety and access for pedestrians walking between the new pedestrian ramp for the Route 96 tram stop (City Road Stop 126) and the South Melbourne Ferrars Street Primary School and community facilities.
- 3.6 On 13 September 2016, Council resolved to commence the process to close Railway Place in accordance with Section 207 of the Local Government Act.

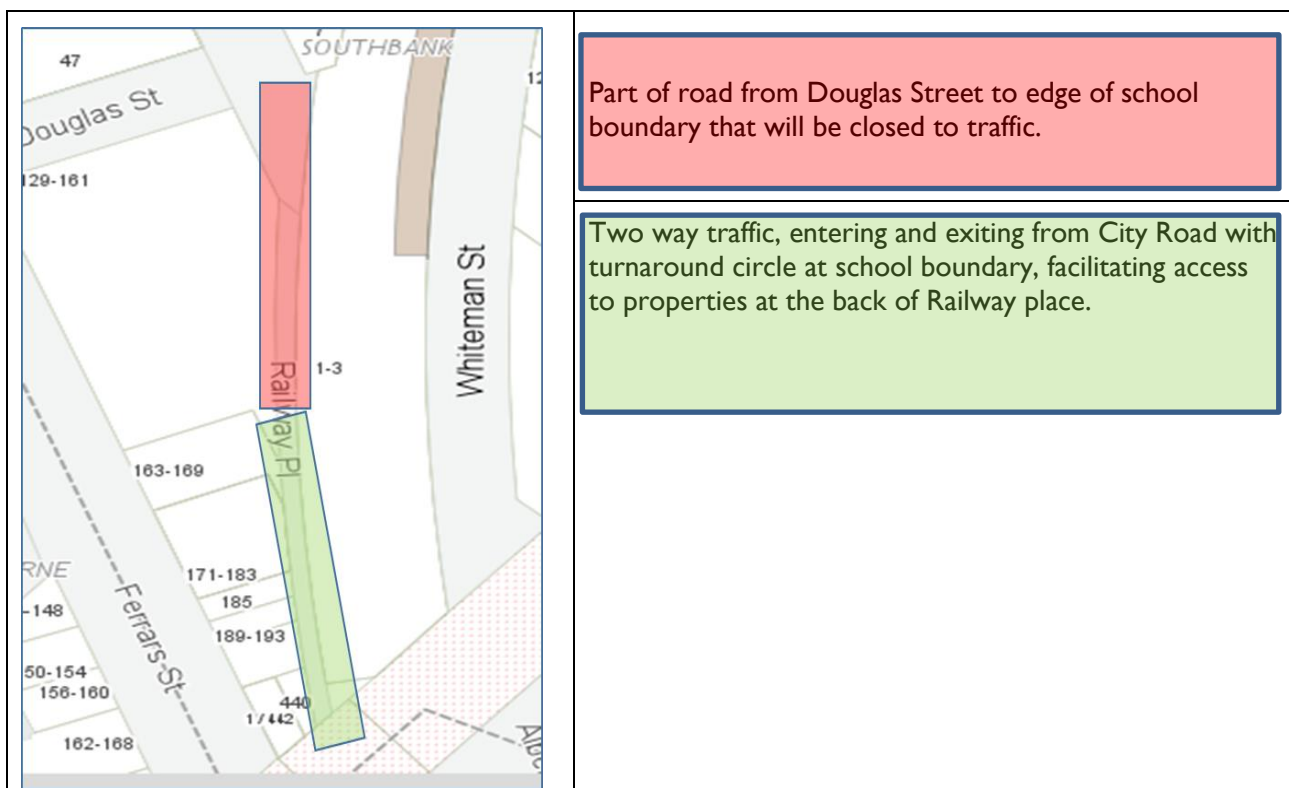


Figure 2 – Railway Place Road Closure

- 3.7 On 13 December 2016, Council noted that the closure of Railway Place will only proceed as part of the Streetscape Works if agreement is reached with the Victorian Government to use VicTrack land needed to support the road closure.
- 3.8 To enable these changes, Council has negotiated with VicTrack, who on behalf of the Victorian Government manage part of the land on Railway Place which abuts the light rail line. VicTrack currently leases this land to parking operators who charge a fee to the public to park on Railway Place.
- 3.9 On 13 December 2016, Council authorised the CEO to enter into an agreement permitting the release of Lot 133 (VicTrack lease) on Whiteman Street to facilitate the exchange of car



parking from Lot 33 on Railway Place.

- 3.10 On 26 July 2017, Council was granted a license for Railway Lot 45 at South Melbourne situated at Railway Place, South Melbourne.
- 3.11 The granting of a license for Lot 45 enables Council to commence the process to permanently close the northern section of Railway Place between as per Figure 2 (above) and widen the southern section of Railway Place.
- 3.12 Council will proceed with the process for the permanent road closure of the northern section and proposed road widening of the southern section of Railway Place in accordance with the *Local Government Act 1989*.

Previous Community Consultation

- 3.13 During 2016 and 2017, Council conducted three phases of consultation on the proposed planning scheme amendment rezoning the land at 2-4 Buckhurst Street and applying the road closure overlay to legally close Ferrars Street (between Douglas and Gladstone streets) and Gladstone Street (between Kerr Street and Ferrars Street).
- 3.14 Phase one consultation on the draft streetscape design, rezoning and road closures was conducted for five weeks from 15 to 22 July 2016. All landowners and occupiers in the area bound by Montague Street, City Road, the Route 96 light rail line and the Route 109 light rail line were directly notified. Written submissions on the proposal were invited and 26 were received by Council. Two drop-in sessions were also held, attended by six community members.
- 3.15 Following phase one consultation, a second phase of consultation provided a further two week period for community members to comment on proposed assessment criteria and possible options for the streetscape design, rezoning and road closures.
- 3.16 At the Council Meeting on 13 December 2016, Council officers were authorised to work with local residents, particularly those at Surveyors Place, to re-scope the streetscape works to consider measures to address their concerns about business access including loss of parking.
- 3.17 A third phase of consultation for two weeks between 27 February and 10 March was carried out to seek feedback on a revised streetscape design, rezoning and road closures. All previous submitters were contacted and invited to provide feedback on the revised design. 16 feedback submissions were received.
- 3.18 At the Council Meeting on 5 April 2017, Council authorised the design and delivery of the streetscape works including modifications arising from community engagement.

Road Closure Process

- 3.19 A proposal to discontinue or close the roads under the Local Government Act, Council is required by virtue of section 207A of the Act, to comply with the provisions of Section 223 (Right to make a submission) of the Act.



- 3.20 This requires Council to undertake a formal public consultation process which is specific to the proposal to discontinue or close the roads.

Consultation for Road Closure Process

- 3.21 Council will mail all properties abutting the roads affected by the road closure.
- 3.22 Council will publish a Notice of Intent to close the roads in the Port Phillip Leader newspaper on Tuesday 26 September 2017. Information about the road closures, including background information and maps, will be published on Council’s Have Your Say website on the same day.
- 3.23 Community members may make a submission regarding the road closures, which should be received by Council no later than 5pm Monday 23 October 2017. Instructions for how to make a submission will be available in the Port Phillip Leader advertisement and on Council’s Have Your Say website.
- 3.24 Council will consider submissions received at the Ordinary Meeting of Council on 15 November 2017. Any person who makes a submission is entitled to appear in person (or in persons acting on their behalf) at this Council Meeting.
- 3.25 Council will make a decision on whether to close the roads at the Ordinary Meeting of Council on 15 November 2017.

4. CONSULTATION AND STAKEHOLDERS

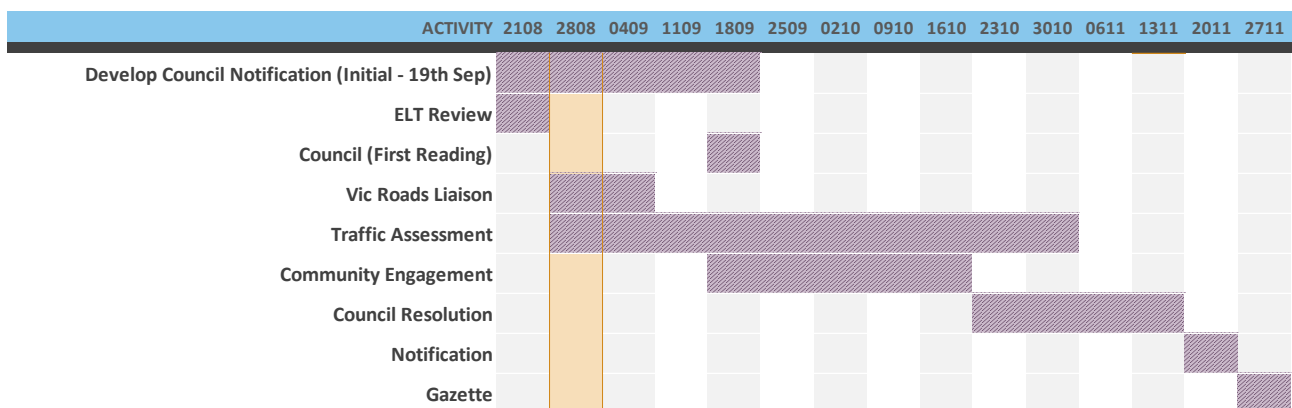
- 4.1 Extensive consultation has occurred with all stakeholders to develop the scope and conceptual design of the Precinct as detailed in Sections 3.13 to 3.18.

5. LEGAL AND RISK IMPLICATIONS

- 5.1 No Risks have been identified.

6. IMPLEMENTATION STRATEGY

6.1 TIMELINE





6.1.1 The timeline shows the proposed activities in closing the roads.

6.2 **COMMUNICATION**

6.2.1 Community engagement will commence following the agreement to the proposed resolution on 19 September.

7. OFFICER DIRECT OR INDIRECT INTEREST

7.1 No officers involved in the preparation of this report have any direct or indirect interest in the matter.