

EXTERNAL FINISHES LEGEND

001 BRICKWORK
 002 BRICKWORK
 003 BRICKWORK
 004 BRICKWORK
 005 BRICKWORK
 006 BRICKWORK
 007 BRICKWORK
 008 BRICKWORK
 009 BRICKWORK
 010 BRICKWORK
 011 BRICKWORK
 012 BRICKWORK
 013 BRICKWORK
 014 BRICKWORK
 015 BRICKWORK
 016 BRICKWORK
 017 BRICKWORK
 018 BRICKWORK
 019 BRICKWORK
 020 BRICKWORK
 021 BRICKWORK
 022 BRICKWORK
 023 BRICKWORK
 024 BRICKWORK
 025 BRICKWORK
 026 BRICKWORK
 027 BRICKWORK
 028 BRICKWORK
 029 BRICKWORK
 030 BRICKWORK
 031 BRICKWORK
 032 BRICKWORK
 033 BRICKWORK
 034 BRICKWORK
 035 BRICKWORK
 036 BRICKWORK
 037 BRICKWORK
 038 BRICKWORK
 039 BRICKWORK
 040 BRICKWORK
 041 BRICKWORK
 042 BRICKWORK
 043 BRICKWORK
 044 BRICKWORK
 045 BRICKWORK
 046 BRICKWORK
 047 BRICKWORK
 048 BRICKWORK
 049 BRICKWORK
 050 BRICKWORK
 051 BRICKWORK
 052 BRICKWORK
 053 BRICKWORK
 054 BRICKWORK
 055 BRICKWORK
 056 BRICKWORK
 057 BRICKWORK
 058 BRICKWORK
 059 BRICKWORK
 060 BRICKWORK
 061 BRICKWORK
 062 BRICKWORK
 063 BRICKWORK
 064 BRICKWORK
 065 BRICKWORK
 066 BRICKWORK
 067 BRICKWORK
 068 BRICKWORK
 069 BRICKWORK
 070 BRICKWORK
 071 BRICKWORK
 072 BRICKWORK
 073 BRICKWORK
 074 BRICKWORK
 075 BRICKWORK
 076 BRICKWORK
 077 BRICKWORK
 078 BRICKWORK
 079 BRICKWORK
 080 BRICKWORK
 081 BRICKWORK
 082 BRICKWORK
 083 BRICKWORK
 084 BRICKWORK
 085 BRICKWORK
 086 BRICKWORK
 087 BRICKWORK
 088 BRICKWORK
 089 BRICKWORK
 090 BRICKWORK
 091 BRICKWORK
 092 BRICKWORK
 093 BRICKWORK
 094 BRICKWORK
 095 BRICKWORK
 096 BRICKWORK
 097 BRICKWORK
 098 BRICKWORK
 099 BRICKWORK
 100 BRICKWORK

GENERAL NOTES

1. ALL WORK TO BE DONE IN ACCORDANCE WITH THE CURRENT EDITIONS OF THE NATIONAL BUILDING REGULATIONS AND THE NATIONAL CONSTRUCTION REGULATIONS.

2. ALL WORK TO BE DONE IN ACCORDANCE WITH THE CURRENT EDITIONS OF THE NATIONAL BUILDING REGULATIONS AND THE NATIONAL CONSTRUCTION REGULATIONS.

3. ALL WORK TO BE DONE IN ACCORDANCE WITH THE CURRENT EDITIONS OF THE NATIONAL BUILDING REGULATIONS AND THE NATIONAL CONSTRUCTION REGULATIONS.

4. ALL WORK TO BE DONE IN ACCORDANCE WITH THE CURRENT EDITIONS OF THE NATIONAL BUILDING REGULATIONS AND THE NATIONAL CONSTRUCTION REGULATIONS.

5. ALL WORK TO BE DONE IN ACCORDANCE WITH THE CURRENT EDITIONS OF THE NATIONAL BUILDING REGULATIONS AND THE NATIONAL CONSTRUCTION REGULATIONS.

6. ALL WORK TO BE DONE IN ACCORDANCE WITH THE CURRENT EDITIONS OF THE NATIONAL BUILDING REGULATIONS AND THE NATIONAL CONSTRUCTION REGULATIONS.

7. ALL WORK TO BE DONE IN ACCORDANCE WITH THE CURRENT EDITIONS OF THE NATIONAL BUILDING REGULATIONS AND THE NATIONAL CONSTRUCTION REGULATIONS.

8. ALL WORK TO BE DONE IN ACCORDANCE WITH THE CURRENT EDITIONS OF THE NATIONAL BUILDING REGULATIONS AND THE NATIONAL CONSTRUCTION REGULATIONS.

9. ALL WORK TO BE DONE IN ACCORDANCE WITH THE CURRENT EDITIONS OF THE NATIONAL BUILDING REGULATIONS AND THE NATIONAL CONSTRUCTION REGULATIONS.

10. ALL WORK TO BE DONE IN ACCORDANCE WITH THE CURRENT EDITIONS OF THE NATIONAL BUILDING REGULATIONS AND THE NATIONAL CONSTRUCTION REGULATIONS.

FIVE STOREY
 15-17 PARK STREET

PROPOSED 15 STOREY RESIDENTIAL DEVELOPMENT 1-3 CLEVELAND STREET

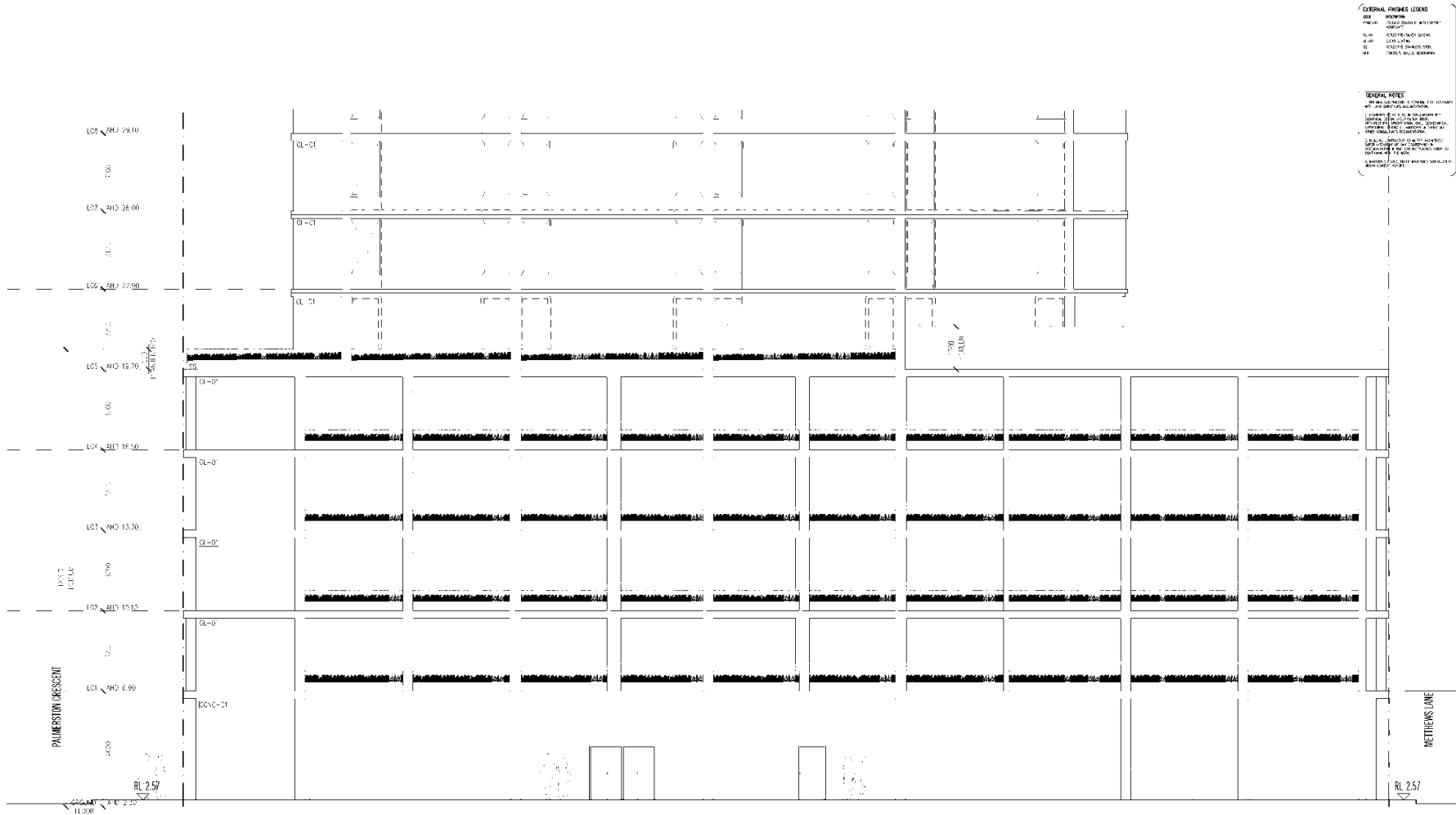
RINGS PLACE

METHUEN LANE

RL 2.45

RL 2.57

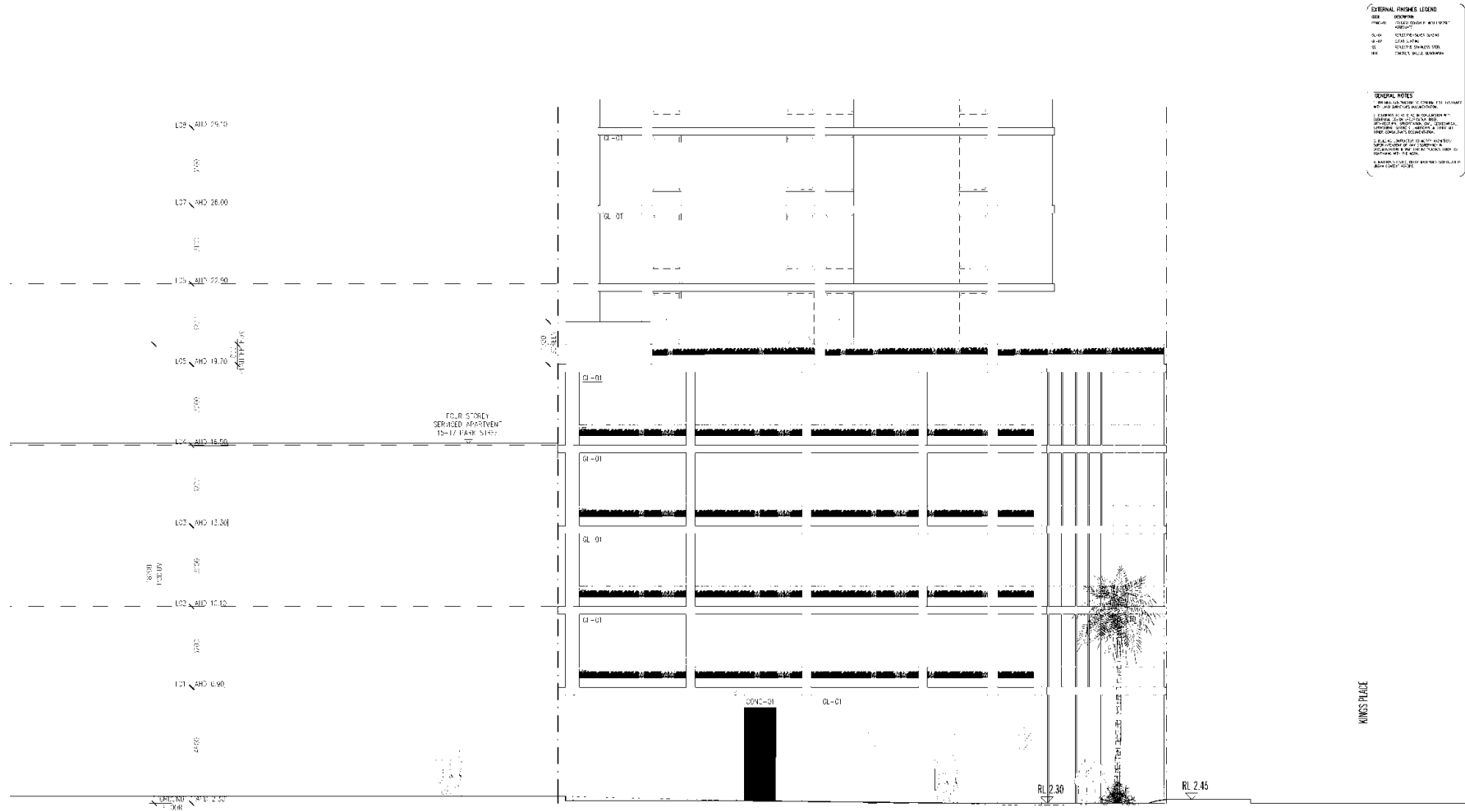
<p>DATE: 15/08/2024 PROJECT: 8 PALMERSTON CRESCENT, SOUTH MELBOURNE DRAWING: EXTERIOR FINISHES ELEVATION SCALE: 1:100 DRAWN BY: [Name] CHECKED BY: [Name]</p>	<p>PROPOSED LAW REVISIONS PRELIMINARY NOT FOR CONSTRUCTION</p>	<p>ELENBERG FRASER ARCHITECTS 100/102 PALMERSTON CRESCENT SOUTH MELBOURNE VIC 3207 PH: 03 9594 1000 WWW.ELENBERGFRASER.COM</p>	<p>8 PALMERSTON CRESCENT, SOUTH MELBOURNE CREMA GROUP</p>	<p>STREET SLOPE ELEVATION EAST ELEVATION 17009 A001 TP</p>
--	--	--	---	--



EXTERNAL FINISHES LEGEND
001 - BRICKWORK
002 - CONCRETE
003 - STONE
004 - TERRAZZO
005 - GLASS
006 - METAL
007 - WOOD
008 - PLASTER
009 - RENDER
010 - PAINT
011 - POLYMER RENDER
012 - TERRAZZO
013 - STONE
014 - TERRAZZO
015 - STONE
016 - TERRAZZO
017 - STONE
018 - TERRAZZO
019 - STONE
020 - TERRAZZO

GENERAL NOTES
1. ALL WORK SHALL BE IN ACCORDANCE WITH THE CURRENT EDITIONS OF THE NATIONAL BUILDING REGULATIONS AND THE NATIONAL CONSTRUCTION CODE.
2. ALL WORK SHALL BE IN ACCORDANCE WITH THE CURRENT EDITIONS OF THE NATIONAL BUILDING REGULATIONS AND THE NATIONAL CONSTRUCTION CODE.
3. ALL WORK SHALL BE IN ACCORDANCE WITH THE CURRENT EDITIONS OF THE NATIONAL BUILDING REGULATIONS AND THE NATIONAL CONSTRUCTION CODE.

PROJECT INFORMATION	CLIENT INFORMATION	DESIGNER INFORMATION	DATE	FOR THE USE OF THE CONTRACTOR PRELIMINARY NOT FOR CONSTRUCTION	ELENBERG FRASER ARCHITECTS 100/101 COLLEGE STREET MELBOURNE VIC 3000 TEL: 03 9412 1234 WWW.ELENBERGFRASER.COM	8 PALMERSTON CRESCENT, SOUTH MELBOURNE CREMA GROUP	STREET SLOPE ELEVATION NORTH ELEVATION 17009 A8012 IP
---------------------	--------------------	----------------------	------	--	---	--	---



EXTERNAL FINISHES LEGEND

001 BRICKWORK
 002 BRICKWORK
 003 BRICKWORK
 004 BRICKWORK
 005 BRICKWORK
 006 BRICKWORK
 007 BRICKWORK
 008 BRICKWORK
 009 BRICKWORK
 010 BRICKWORK
 011 BRICKWORK
 012 BRICKWORK
 013 BRICKWORK
 014 BRICKWORK
 015 BRICKWORK
 016 BRICKWORK
 017 BRICKWORK
 018 BRICKWORK
 019 BRICKWORK
 020 BRICKWORK
 021 BRICKWORK
 022 BRICKWORK
 023 BRICKWORK
 024 BRICKWORK
 025 BRICKWORK
 026 BRICKWORK
 027 BRICKWORK
 028 BRICKWORK
 029 BRICKWORK
 030 BRICKWORK
 031 BRICKWORK
 032 BRICKWORK
 033 BRICKWORK
 034 BRICKWORK
 035 BRICKWORK
 036 BRICKWORK
 037 BRICKWORK
 038 BRICKWORK
 039 BRICKWORK
 040 BRICKWORK
 041 BRICKWORK
 042 BRICKWORK
 043 BRICKWORK
 044 BRICKWORK
 045 BRICKWORK
 046 BRICKWORK
 047 BRICKWORK
 048 BRICKWORK
 049 BRICKWORK
 050 BRICKWORK
 051 BRICKWORK
 052 BRICKWORK
 053 BRICKWORK
 054 BRICKWORK
 055 BRICKWORK
 056 BRICKWORK
 057 BRICKWORK
 058 BRICKWORK
 059 BRICKWORK
 060 BRICKWORK
 061 BRICKWORK
 062 BRICKWORK
 063 BRICKWORK
 064 BRICKWORK
 065 BRICKWORK
 066 BRICKWORK
 067 BRICKWORK
 068 BRICKWORK
 069 BRICKWORK
 070 BRICKWORK
 071 BRICKWORK
 072 BRICKWORK
 073 BRICKWORK
 074 BRICKWORK
 075 BRICKWORK
 076 BRICKWORK
 077 BRICKWORK
 078 BRICKWORK
 079 BRICKWORK
 080 BRICKWORK
 081 BRICKWORK
 082 BRICKWORK
 083 BRICKWORK
 084 BRICKWORK
 085 BRICKWORK
 086 BRICKWORK
 087 BRICKWORK
 088 BRICKWORK
 089 BRICKWORK
 090 BRICKWORK
 091 BRICKWORK
 092 BRICKWORK
 093 BRICKWORK
 094 BRICKWORK
 095 BRICKWORK
 096 BRICKWORK
 097 BRICKWORK
 098 BRICKWORK
 099 BRICKWORK
 100 BRICKWORK

<p>DATE: 10/10/2023 DRAWN BY: [Name] CHECKED BY: [Name] PROJECT: [Name]</p>	<p>SCALE: 1:100 SHEET: 3 OF 4</p>	<p>FOR THE LAWYER'S INFORMATION PRELIMINARY NOT FOR CONSTRUCTION</p>	<p>ELENBERG PRASER ARCHITECTS 10/10/2023 8 PALMERSTON CRESCENT, SOUTH MELBOURNE CREMA GROUP</p>	<p>STREET SLOPE ELEVATION WEST ELEVATION 17009 A0013 TP</p>
--	--	---	---	---