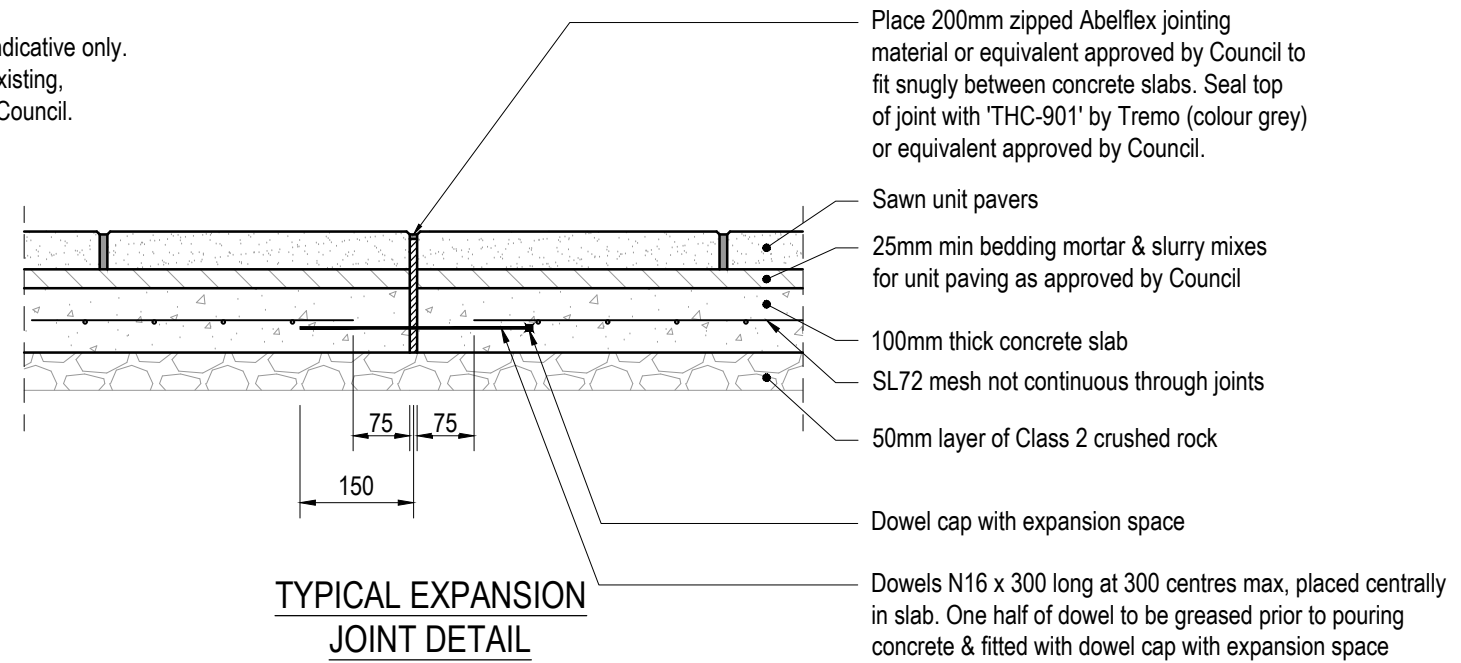
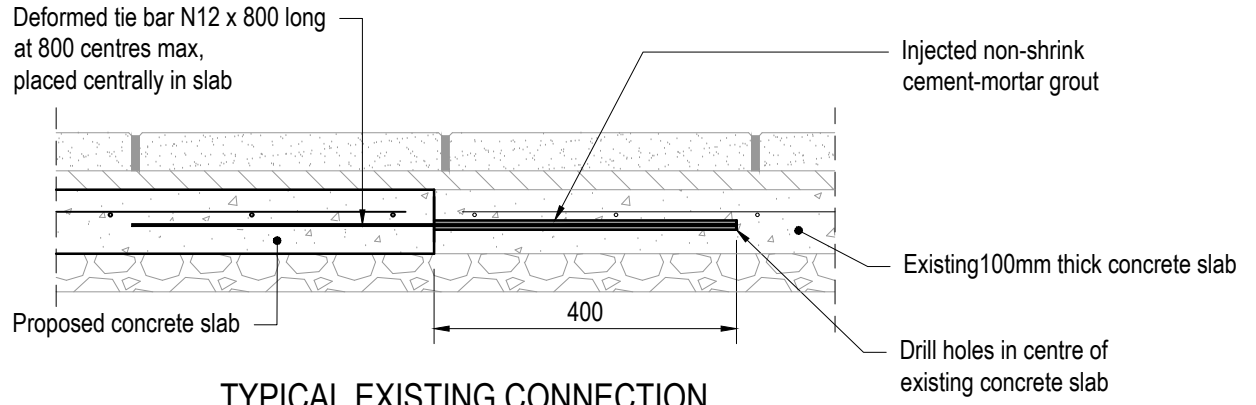


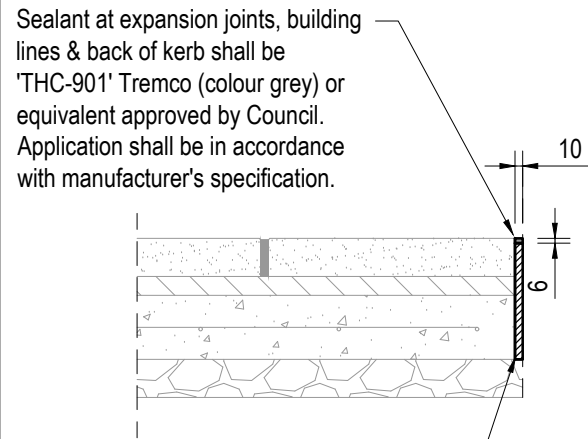
**UNIT PAVER LAYOUT PLAN  
BLUESTONE OR CONCRETE PAVERS**



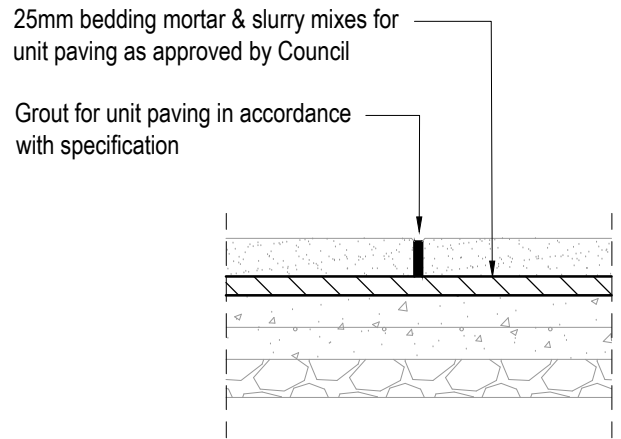
**TYPICAL EXPANSION JOINT DETAIL**



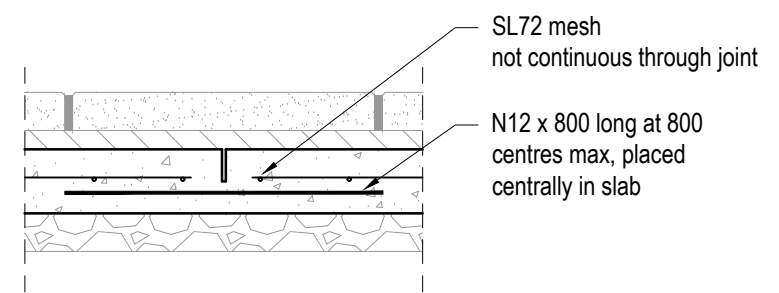
**TYPICAL EXISTING CONNECTION JOINT DETAIL**



**TYPICAL ISOLATION JOINT DETAIL**



**TYPICAL GROUT JOINTS AND MORTAR BEDDING**



**TYPICAL CONSTRUCTION JOINT DETAIL**

**NOTES**

1. Standard sized paving unit is 995 x 495 x 40mm, with a sawn finish and a 2mm chamfer to edges.
2. Concrete strength: 25 MPa at 28 days
3. Pavers are laid in a pattern to match existing pavement, or as specified by Council.
4. The paving should provide a consistent finish and be level and flush with existing pavement surfaces.
5. Reinforcement with 300mm min lap, placed centrally using bar chairs.
6. All dimensions are in millimetres unless noted otherwise.

A APPROVED FOR USE		DEC 2020
No	Revision	Date

**Disclaimer:**  
The authors and sponsoring organisations shall have no liability or responsibility to the user or any other person or entity with respect to any liability, loss or damage caused or alleged to be caused, directly or indirectly, by the adoption and use of these Standard Drawings including, but not limited to, any interruption of service, loss of business or anticipatory profits, or consequential damages resulting from the use of these Standard Drawings. Persons must not rely on these Standard Drawings as the equivalent of, or a substitute for, project-specific design and assessment by an appropriately qualified professional.



DRAWING NOT TO SCALE	
Approved	Project Services
Date	Dec. 2020

Drawing Title	FOOTPATH PAVEMENT UNIT PAVER	
Original Size	A3	Drawing No: CPP1304
Rev:	A	