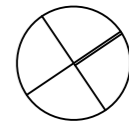
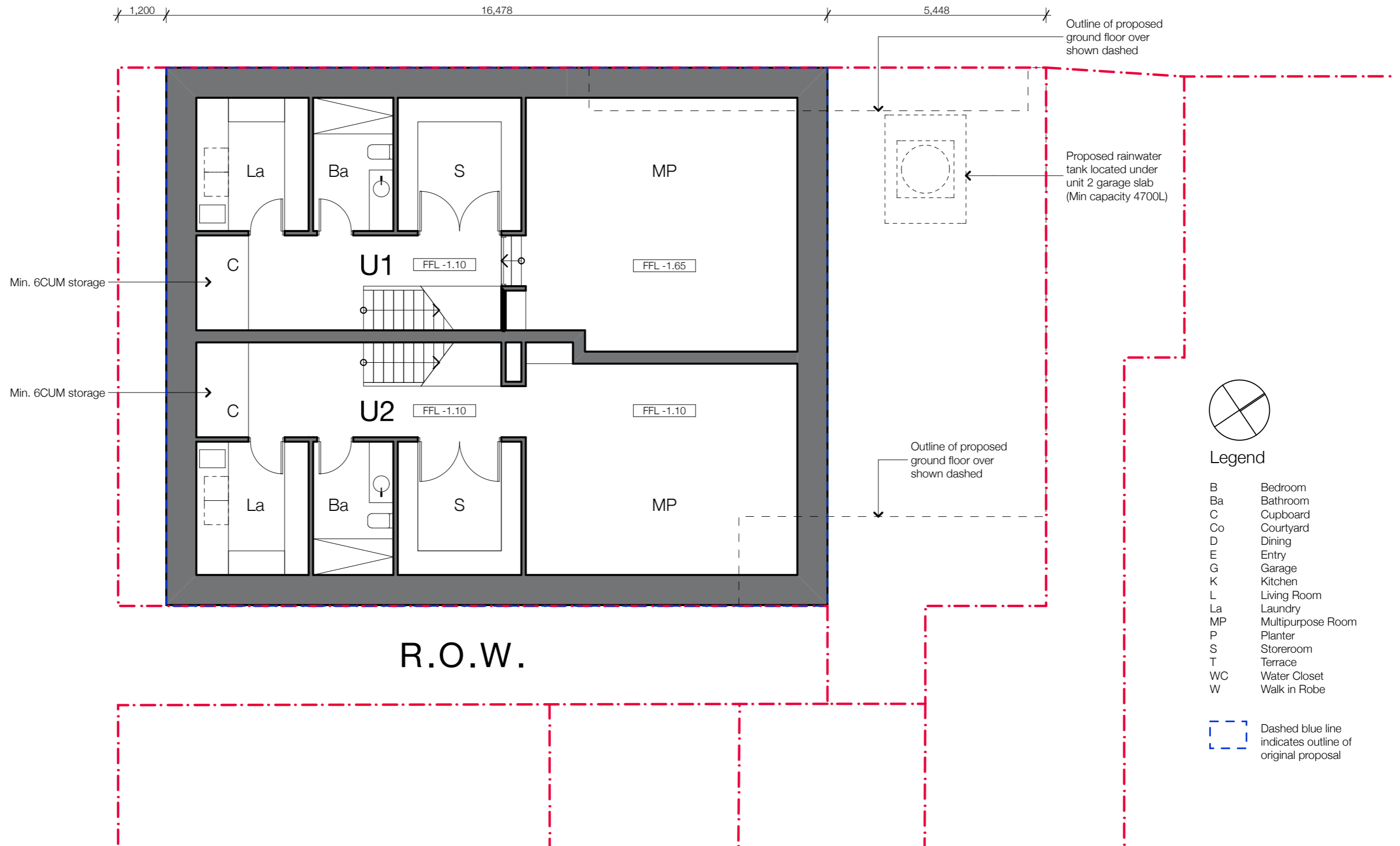


- 1 Front setback is consistent with the neighbourhood
  - 2 Angled roof to prevent shadowing neighbours POS
  - 3 Terraces on first floor with 1.8m high walls to prevent overlooking to neighbouring POS
  - 4 Angled roof to reduce visual bulk
  - 5 Car park entry off Cruikshank Place as existing
  - 6 Obscure glazing to dormer style windows to min. 1700mm above FFL
- 
- 6 Obscure glazing to dormer style windows to min. 1700mm above FFL
- 
- V1 Spring Street East Frontage Facade TP.1
  - V2 Spring Street East Frontage Facade TP.11
  - V3 Spring Street East Frontage Facade TP.11
  - V4 View from POS of 131 Cruikshank St TP.12
  - V5 View from Cruikshank Place TP.12
  - V6 View from POS of 139 Cruikshank St TP.13
- 
- W Window - Habitable Adjoining and Neighbouring
  - NHW Window - Non Habitable Adjoining and Neighbouring
  - D Door Adjoining and Neighbouring
  - POS Private Open Space Adjoining and Neighbouring

# Cruikshank Place

Spring Street East



**Legend**

- B Bedroom
- Ba Bathroom
- C Cupboard
- Co Courtyard
- D Dining
- E Entry
- G Garage
- K Kitchen
- L Living Room
- La Laundry
- MP Multipurpose Room
- P Planter
- S Storeroom
- T Terrace
- WC Water Closet
- W Walk in Robe

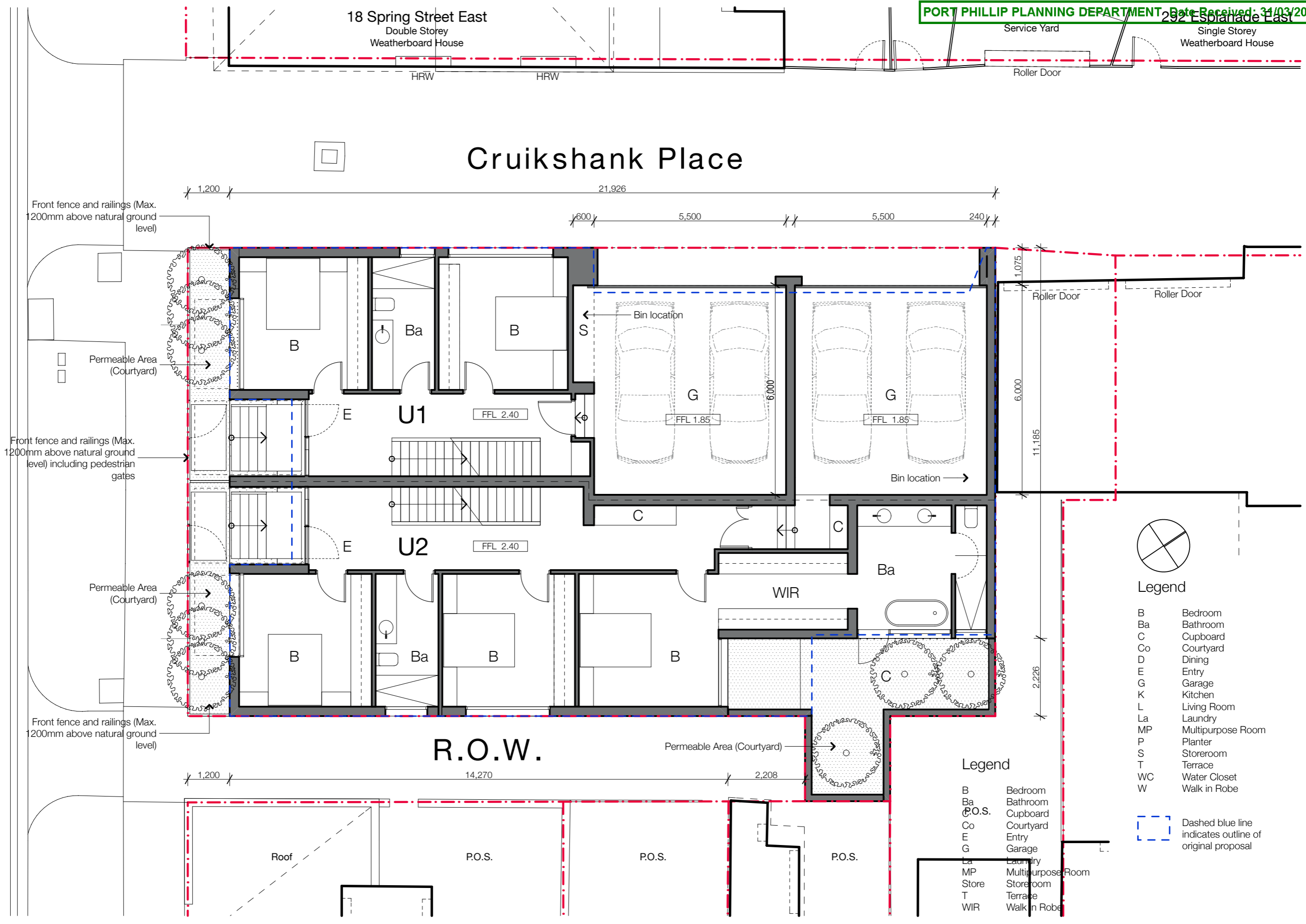
Dashed blue line indicates outline of original proposal

18 Spring Street East  
 Double Storey  
 Weatherboard House

Service Yard  
 Single Storey  
 Weatherboard House

# Cruikshank Place

Spring Street East



- Legend**
- B Bedroom
  - Ba Bathroom
  - C Cupboard
  - Co Courtyard
  - D Dining
  - E Entry
  - G Garage
  - K Kitchen
  - L Living Room
  - La Laundry
  - MP Multipurpose Room
  - P Planter
  - S Storeroom
  - T Terrace
  - WC Water Closet
  - W Walk in Robe

- Legend**
- B Bedroom
  - Ba Bathroom
  - C.O.S. Cupboard
  - Co Courtyard
  - E Entry
  - G Garage
  - La Laundry
  - MP Multipurpose Room
  - Store Store room
  - T Terrace
  - WIR Walk in Robe

Dashed blue line indicates outline of original proposal

18 Spring Street East  
Double Storey  
Weatherboard House

Recent second storey extension  
to 18 Spring Street East.

# Cruikshank Place

1,200 16,030 5,896

Raked screening wall to  
terrace min. 1800mm  
above floor

800mm wide  
planter  
Screening wall to  
terrace 1800mm  
above floor

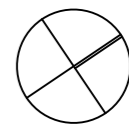
800mm  
wide  
planter

Screening wall to terrace  
1800mm above floor

Screening wall to terrace  
1800mm above floor

Obscure windows below  
1700mm above floor level

R.O.W.



Legend

- B Bedroom
- Ba Bathroom
- C Cupboard
- Co Courtyard
- D Dining
- E Entry
- G Garage
- K Kitchen
- L Living Room
- La Laundry
- MP Multipurpose Room
- P Planter
- S Storeroom
- T Terrace
- WC Water Closet
- W Walk in Robe

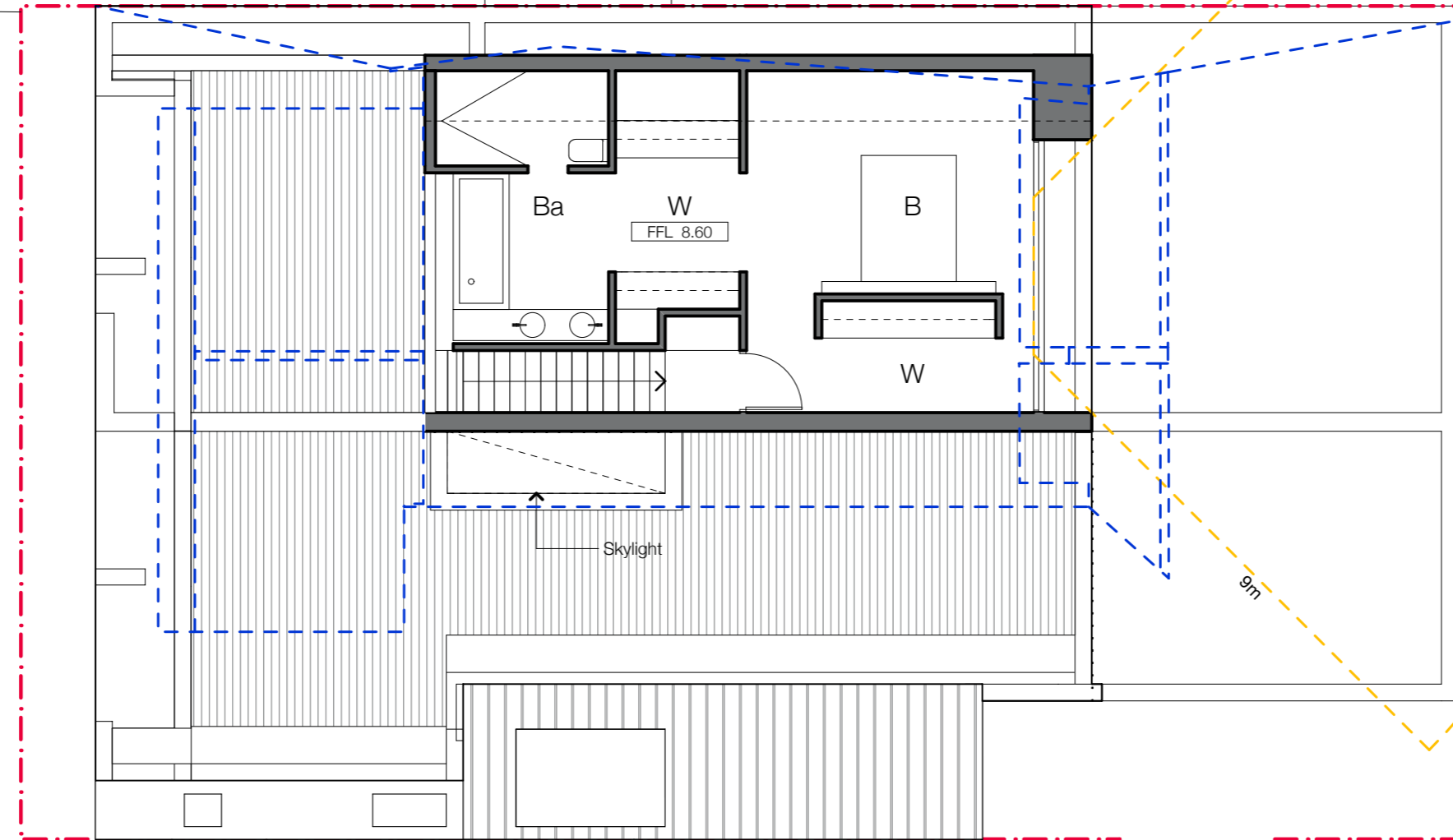
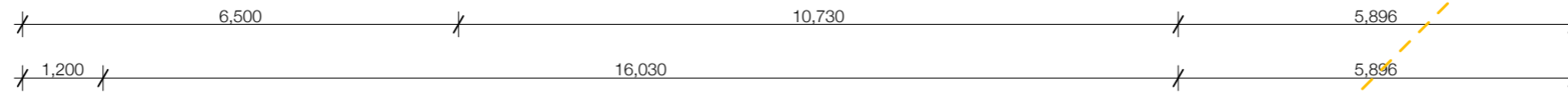
Dashed blue line  
indicates outline of  
original proposal

Spring Street East

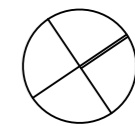
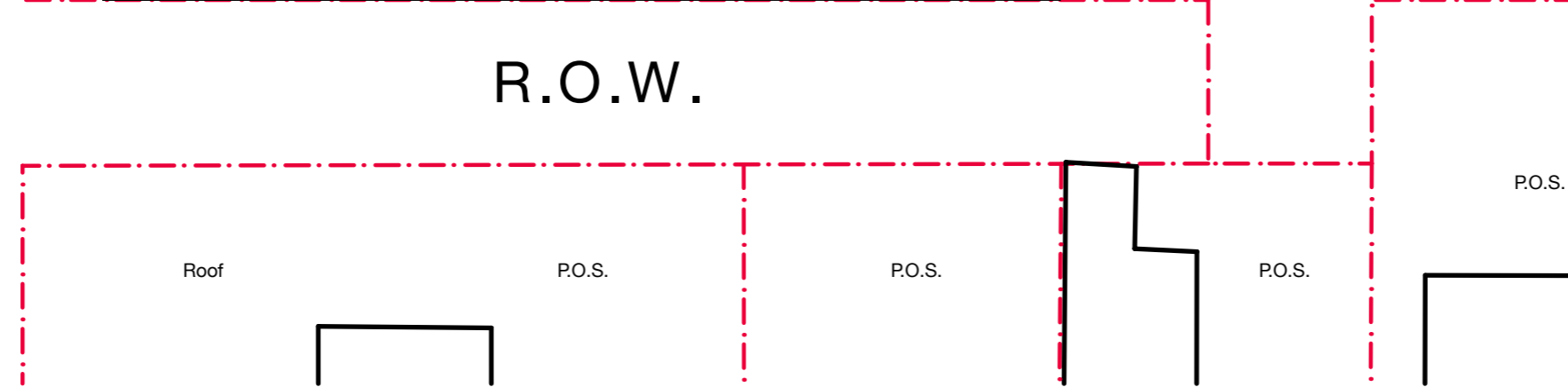
Service Yard

Spring Street East

Cruikshank Place



R.O.W.



Legend

- B Bedroom
- Ba Bathroom
- C Cupboard
- Co Courtyard
- D Dining
- E Entry
- G Garage
- K Kitchen
- L Living Room
- La Laundry
- MP Multipurpose Room
- P Planter
- S Storeroom
- T Terrace
- WC Water Closet
- W Walk in Robe

- Dashed blue line indicates outline of original proposal
- Dashed yellow line indicates 9m overlooking zone