

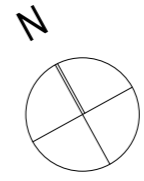
METAXAS ARCHITECTS PTY LTD: ABN 180 791 78626: 152 QUEENSBERRY STREET, CARLTON VIC 3053: AUSTRALIA
 TEL 03 9349 5344 FACSIMILE 03 9349 1733 EMAIL mail@metaxasarch.com WEB: www.metaxasarch.com

FINISHES LEGEND:

- (P1) PRECAST CONCRETE - DIESKAU
- (P2) PRECAST CONCRETE - FLOODED GUM
- (P3) PRECAST CONCRETE - TRISTAN
- (Z1) ZINC CLADDING -PIGMENTO ASH BLUE
- (Z2) ZINC CLADDING -QUARTZ ZINC

- (L1) POWDER-COATED ALUMINIUM LOUVRES -BLACK
- (G1) GLASS - CLEAR GLASS
- (G2) GLASS - OPAGUE GLASS
- (A1) POWDER-COATED ALUMINIUM WINDOW FRAME - BLACK

- IL ILLUMINATED SIGN BEHIND GLASS
- (M1) METAL PICKET FENCE
- (T1) TIMBER PALING FENCE
- (ZP) PERFORATED ZINC -PIGMENTO ASH BLUE
MAXIMUM 25% PERFORATIONS
- F= FIXED WINDOW
O = OPENABLE WINDOW



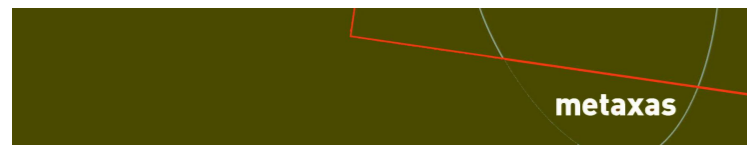
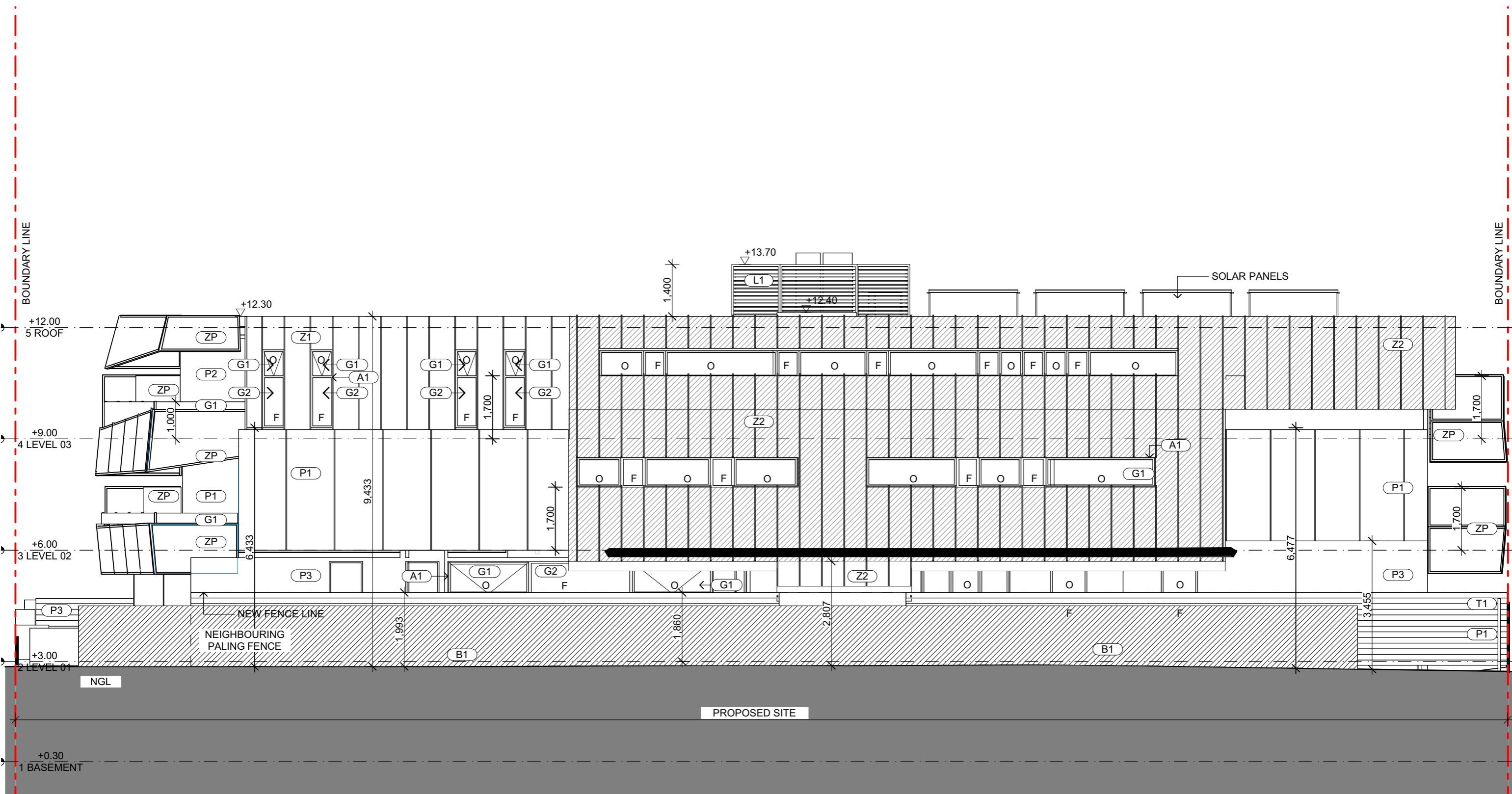
Client
DOCKER STREET PTY LTD
 Project Name
**APARTMENT DEVELOPMENT
 3 DOCKER STREET, ELWOOD**

Drawing Title:
WEST ELEVATION

Scale: 1:200 @A3	Date: 08 AUGUST 2016
Status: TOWN PLANNING	Checked By:
Project No: 11.007	Drawing No.: TP3.01
	REV: D

Plot Date: 8/08/2016

M:\2011\11.007 docker st\cad\01 Model\11.007 3 Docker_DD.dwg

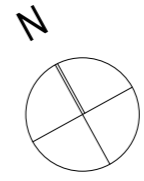


METAXAS ARCHITECTS PTY LTD: ABN 180 791 78626: 152 QUEENSBERRY STREET, CARLTON VIC 3053: AUSTRALIA
 TEL 03 9349 5344 FACSIMILE 03 9349 1733 EMAIL mail@metaxasarch.com WEB: www.metaxasarch.com

- FINISHES LEGEND:**
- (P1) PRECAST CONCRETE - DIESKAU
 - (P2) PRECAST CONCRETE - FLOODED GUM
 - (P3) PRECAST CONCRETE - TRISTAN
 - (Z1) ZINC CLADDING - PIGMENTO ASH BLUE
 - (Z2) ZINC CLADDING - QUARTZ ZINC

- (L1) POWDER-COATED ALUMINIUM LOUVRES -BLACK
- (G1) GLASS - CLEAR GLASS
- (G2) GLASS - OPAQUE GLASS
- (A1) POWDER-COATED ALUMINIUM WINDOW FRAME - BLACK

- (M1) METAL PICKET FENCE
- (T1) TIMBER PALING FENCE
- (ZP) PERFORATED ZINC -PIGMENTO ASH BLUE MAXIMUM 25% PERFORATIONS
- F= FIXED WINDOW
- O = OPENABLE WINDOW

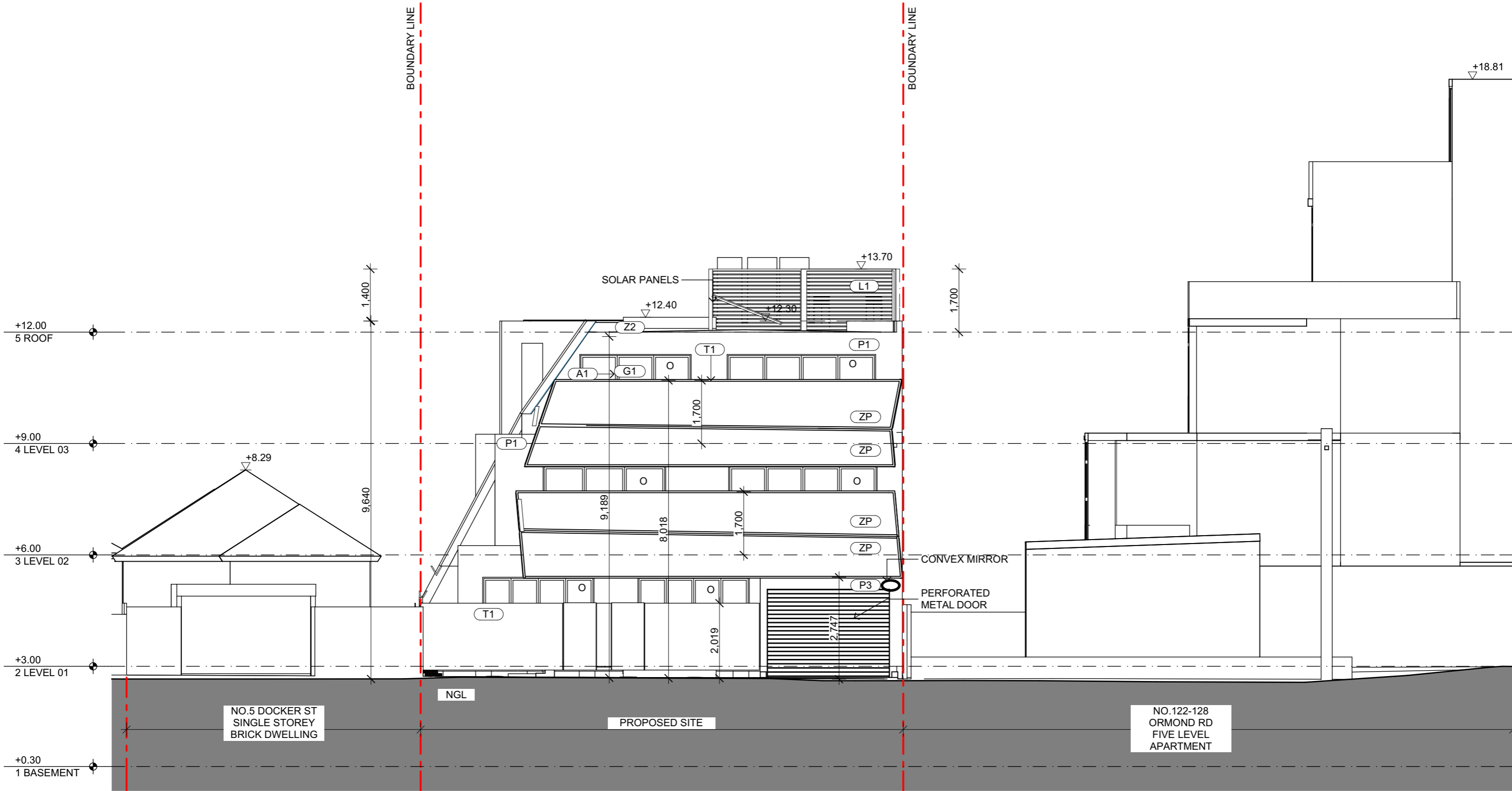


Client
DOCKER STREET PTY LTD

Project Name
**APARTMENT DEVELOPMENT
 3 DOCKER STREET, ELWOOD**

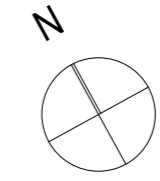
Drawing Title: SOUTH ELEVATION	
Scale: 1:100 @A3	Date: 08 AUGUST 2016
Status: TOWN PLANNING	Checked By:
Project No: 11.007	Drawing No.: TP3.02
Plot Date:	REV: D

M:\2011\11.007 docker elwood Model\11.007 3 Docker_DD_ii.plt 8/08/2016



METAXAS ARCHITECTS PTY LTD: ABN 180 791 78626: 152 QUEENSBERRY STREET, CARLTON VIC 3053: AUSTRALIA
 TEL 03 9349 5344 FACSIMILE 03 9349 1733 EMAIL mail@metaxasarch.com WEB: www.metaxasarch.com

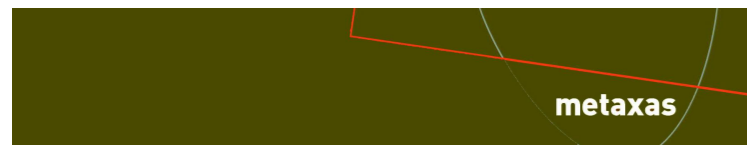
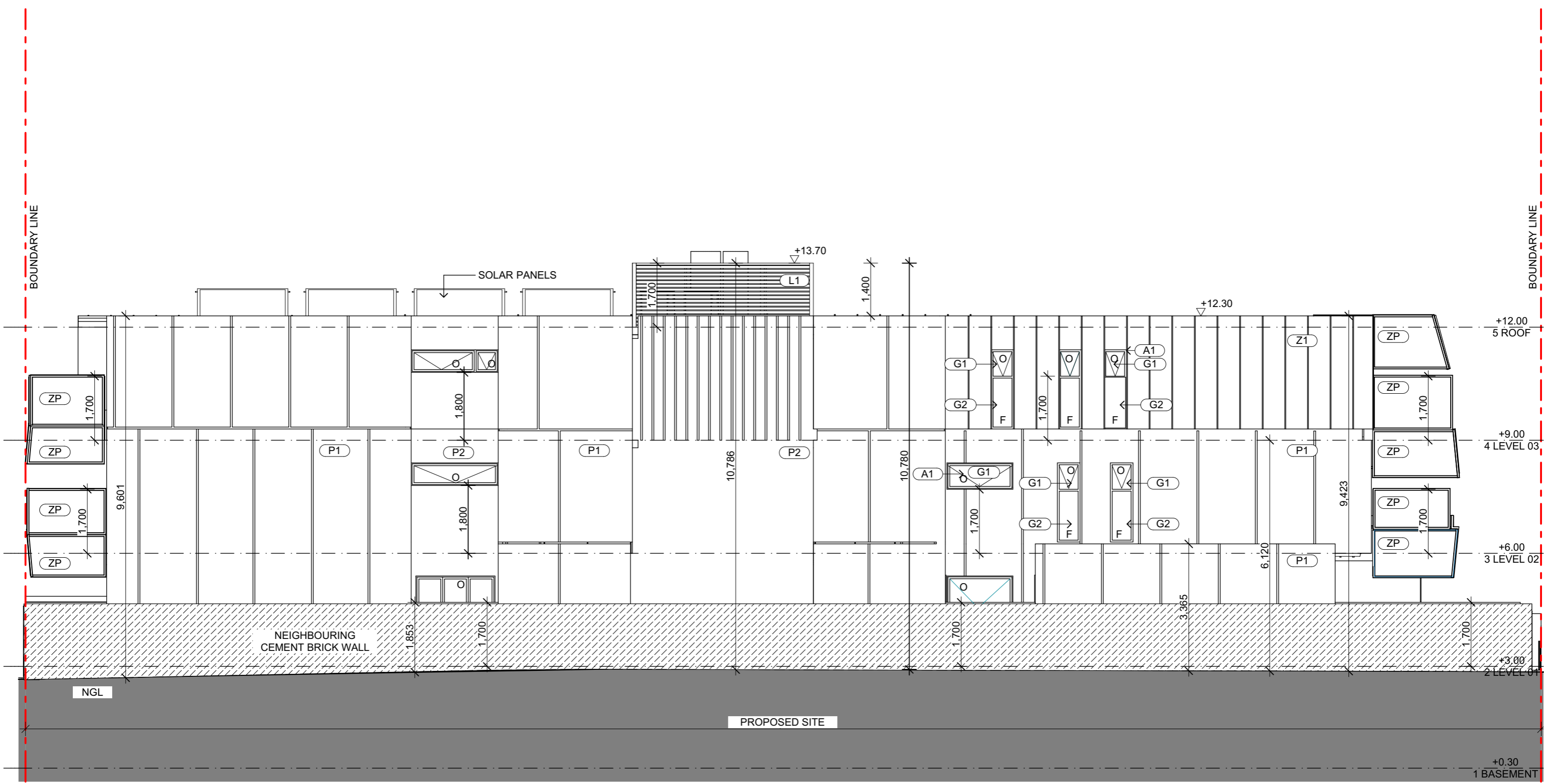
- FINISHES LEGEND:**
- (P1)** PRECAST CONCRETE - DIESKAU
 - (P2)** PRECAST CONCRETE - FLOODED GUM
 - (P3)** PRECAST CONCRETE - TRISTAN
 - (Z1)** ZINC CLADDING -PIGMENTO ASH BLUE
 - (Z2)** ZINC CLADDING -QUARTZ ZINC
 - (L1)** POWDER-COATED ALUMINIUM LOUVRES -BLACK
 - (G1)** GLASS - CLEAR GLASS
 - (G2)** GLASS - OPAGUE GLASS
 - (A1)** POWDER-COATED ALUMINIUM WINDOW FRAME - BLACK
 - (M1)** METAL PICKET FENCE
 - (T1)** TIMBER PALING FENCE
 - (ZP)** PERFORATED ZINC -PIGMENTO ASH BLUE MAXIMUM 25% PERFORATIONS
 - F** FIXED WINDOW
 - O** OPENABLE WINDOW



Client
DOCKER STREET PTY LTD
 Project Name
APARTMENT DEVELOPMENT
3 DOCKER STREET, ELWOOD

Drawing Title: EAST ELEVATION		
Scale: 1:100 @A3	Date: 08 AUGUST 2016	
Status: TOWN PLANNING	Checked By:	
Project No: 11.007	Drawing No.: TP3.03	REV: D
Plot Date:	8/08/2016	

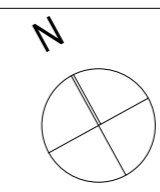
M:\201111.007 docker st\cad\01 Model\11.007 3 Docker_DD.dwg



METAXAS ARCHITECTS PTY LTD: ABN 180 791 78626: 152 QUEENSBERRY STREET, CARLTON VIC 3053: AUSTRALIA
 TEL 03_9349 5344 FACSIMILE 03_9349 1733 EMAIL mail@metaxasarch.com WEB: www.metaxasarch.com

FINISHES LEGEND:

- (P1)** PRECAST CONCRETE - DIESKAU
- (P2)** PRECAST CONCRETE - FLOODED GUM
- (P3)** PRECAST CONCRETE - TRISTAN
- (Z1)** ZINC CLADDING -PIGMENTO ASH BLUE
- (Z2)** ZINC CLADDING -QUARTZ ZINC
- (L1)** POWDER-COATED ALUMINIUM LOUVRES -BLACK
- (G1)** GLASS - CLEAR GLASS
- (G2)** GLASS - OPAGUE GLASS
- (A1)** POWDER-COATED ALUMINIUM WINDOW FRAME - BLACK
- (M1)** METAL PICKET FENCE
- (T1)** TIMBER PALING FENCE
- (ZP)** PERFORATED ZINC -PIGMENTO ASH BLUE MAXIMUM 25% PERFORATIONS
- F** = FIXED WINDOW
- O** = OPENABLE WINDOW



Client
DOCKER STREET PTY LTD

Project Name
**APARTMENT DEVELOPMENT
 3 DOCKER STREET, ELWOOD**

Drawing Title:	
NORTH ELEVATION	
Scale: 1:100 @A3	Date: 08 AUGUST 2016
Status: TOWN PLANNING	Checked By:
Project No: 11.007	Drawing No.: TP3.04 D
Plot Date:	REV: 8/08/2016

M:\2011\11.007 docker st\cad\01 Model\11.007 3 Docker_DD_1.plt