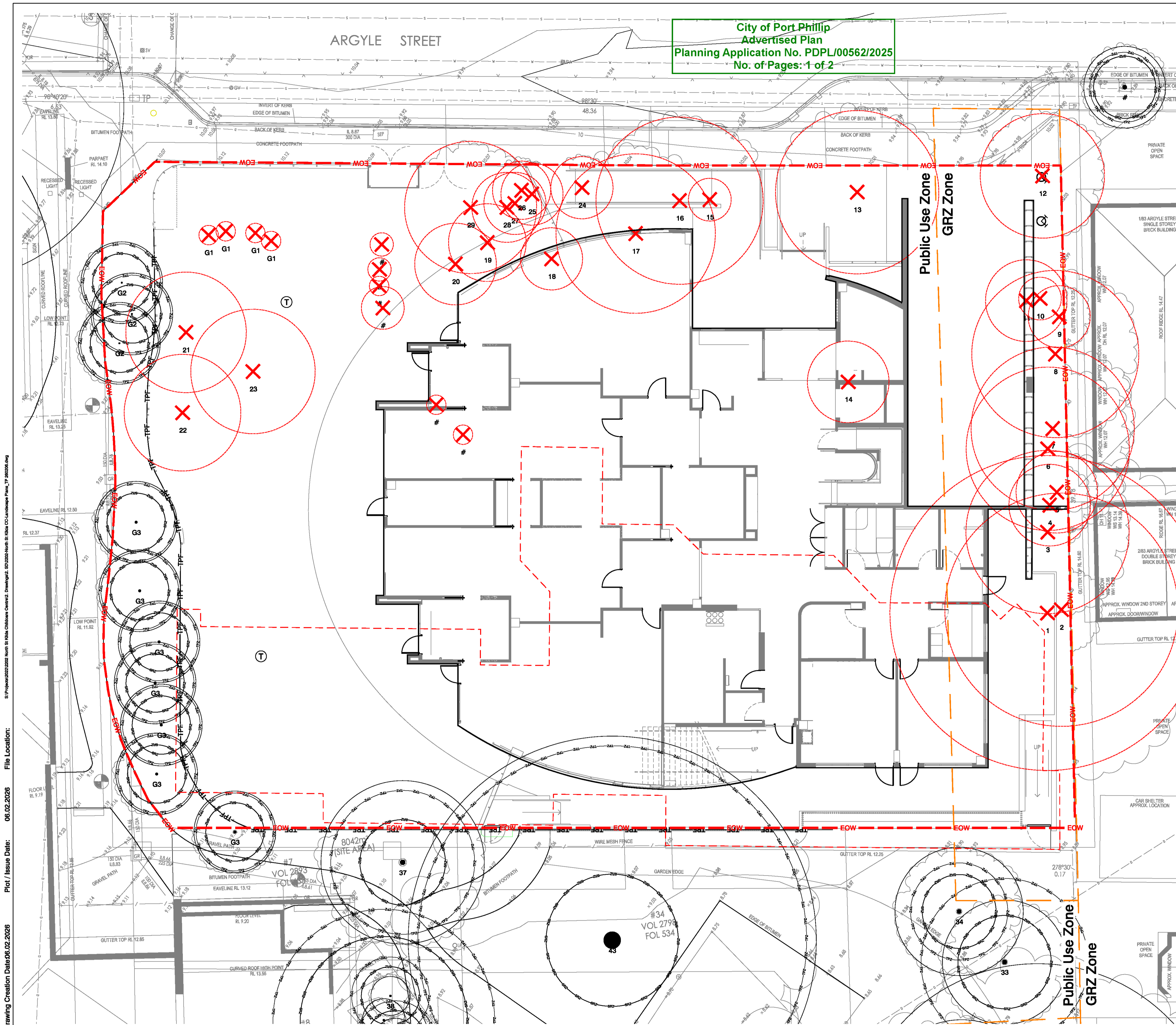


City of Port Phillip
Advertised Plan
Planning Application No. PDPL/00562/2025
No. of Pages: 1 of 2



LEGEND

- Extent of Works
- Building Edge
- Building Over
- Planning Zones
- Existing Building Edge
- Existing Tree To Be Retained and Protected
- Existing Tree To Be Removed
- TPF Tree Protection Fencing

NOTES:

- General
- Site compound location to be agreed on site.
 - Trees on site to be removed are to be identified in accordance with the landscape specification prior to removal works and approved by the superintendent.
 - All trees outside extent of works, and / or identified to be retained are bound by the tree protection specification.
 - Refer to landscape specification for comprehensive tree protection requirements and damages formula.
 - All works requiring an arborist shall be at the contractors expense and appointment.
 - All items not noted to be demolished and protected, subject to the direction by the superintendent.
 - All edges, kerbs and channels associated with pavements proposed for demolition are to also be demolished.
 - Refer to landscape specification for further demolition requirements.

- Protection of existing trees
- No persons, vehicles, or machinery are to enter the Tree Preservation Zone without the consent of the Superintendent. If access of any kind is required through a TPZ contact the Superintendent. Removal of plant material of any kind requires approval of Superintendent.
 - Keep area within drip line free of all equipment, building materials and debris. Do not lean materials, equipment or debris against trunks. No building materials whatsoever, including fuel, oil drums, paints or chemicals is allowed within or to be stored on the Tree Preservation Zone and the servicing and re-fuelling of equipment and vehicles is to be carried out away from the root zones. No storage of material, equipment, or temporary building should take place over the root zone of any tree, including areas that have been mulched to protect trees.
 - Do not carry out cut and fill operations within the drip line of any trees to be retained other than those specifically nominated on the final grading plan.
 - Do not rip out roots of nominated trees. Obtain the Superintendent's permission for removal of tree roots greater than 40mm in diameter.
 - Provide a breathing layer around the collar of trees in more than 300mm of fill.
 - When excavations are carried out in the vicinity of trees to be retained, use hand excavation to locate any roots. Clean cut with a saw, roots which need to be removed before commencing machine excavation. Do not use an axe to cut roots. Seal tree root cuts with "Steriprune" or equivalent approved tree wound sealant. Open up excavations under tree canopies for as short a period as possible. Backfill to excavations around tree roots with a mixture consisting of three parts by volume of topsoil and one part of well rotted compost with a neutral pH value, free from weed growth and harmful materials. Place the backfill layers, each of 300 mm maximum depth, compacted to a height greater than 100mm above the original ground surface. Immediately after backfilling, thoroughly water the root zone surrounding the tree.
 - Any underground service installations should be bored and utility authorities should common trench where possible.
 - If it is proposed to perform work on trees or any work of any trade within the TPZ, give notice and obtain instructions.
 - If a tree is damaged, give notice and obtain instructions.
 - Should any trees nominated to be retained, be removed or damaged in error by the Contractor, damage shall be applied in accordance with the landscape specification and deducted from the Contract Sum.
 - All trees outside of the extent of works are to be retained and protected in accordance with the above tree protection notes and in accordance with the landscape specification.

- NOTES ON RECYCLING:
- All items to be demolished are to be recycled in accordance with recycling in specification.
 - Trees are to be mulched / chipped & reused on site where directed.

- NOTES ON THE PROTECTION OF ASSETS & SERVICES:
- Contractor to locate all services & rectify all damage resulting from construction works.
 - Contractor to undertake dilapidation survey (including photographs) and submit to the Superintendent for approval / agreement prior to commencing works. On completion of construction works, all damages not recorded within the dilapidation survey will be rectified at the Contractors expense.
 - The Contractor is to ensure protection to adjacent structures, built elements, facades, buildings and adjoining properties.
 - Refer specification for comprehensive demolition requirements.
 - Site security to be maintained at all times.

EXISTING TREE SCHEDULE (refer to Arborist Report by Consultant, Tree Logic Pty. Ltd.

Tree ID	Genus Species	Common Name	Remove / Retain
1	Acacia melanoxylon	Blackwood	Remove
2	Acacia melanoxylon	Blackwood	Remove
3	Ailanthus altissima	Tree of Heaven	Remove
4	Acacia melanoxylon	Blackwood	Remove
5	Allocasuarina sp.	She-oak	Remove
6	Acacia melanoxylon	Blackwood	Remove
7	Acacia melanoxylon	Blackwood	Remove
8	Acacia melanoxylon	Blackwood	Remove
9	Ligustrum lucidum	Shining Privet	Remove
10	Callistemon viminalis	Weeping Bottlebrush	Remove
11	Allocasuarina sp.	She-oak	Remove
12	Agonis flexuosa	Willow Myrtle	Remove
13	Pittosporum undulatum	Sweet Pittosporum	Remove
14	Lagerstroemia sp.	Crepe Myrtle	Remove
15	Callistemon sp.	Bottlebrush	Remove
16	Angophora costata	Smooth-barked Apple	Remove
17	Angophora costata	Smooth-barked Apple	Remove
18	Callistemon sp.	Bottlebrush	Remove
19	Betula pendula	Silver Birch	Remove
20	Betula pendula	Silver Birch	Remove
21	Lophostemon confertus	Brush Box	Remove
22	Lophostemon confertus	Brush Box	Remove
23	Acer buergerianum	Trident Maple	Remove
24	Jacaranda mimosifolia	Jacaranda	Remove
25	Robinia pseudoacacia	Lucust	Remove
26	Robinia pseudoacacia	Lucust	Remove
27	Robinia pseudoacacia	Lucust	Remove
28	Robinia pseudoacacia	Lucust	Remove
29	Brachychiton acerifolius	Illawarra Flame Tree	Remove
30	Callistemon viminalis	Weeping Bottlebrush	Remove
31	Allocasuarina sp.	She-oak	Remove
32	Agonis flexuosa	Willow Myrtle	Remove
33	Pittosporum undulatum	Sweet Pittosporum	Remove
34	Radermachera sinica	Asian Bell Tree	Retain
35	Lophostemon confertus	Brush Box	Retain
36	Alnus acuminata subsp. glabrata	Evergreen Alder	Retain
37	Alnus acuminata subsp. glabrata	Evergreen Alder	Retain
38	Callistemon viminalis	Weeping Bottlebrush	Remove
39	Allocasuarina sp.	She-oak	Remove
40	Agonis flexuosa	Willow Myrtle	Remove
41	Pittosporum undulatum	Sweet Pittosporum	Remove
42	Lagerstroemia sp.	Crepe Myrtle	Remove
43	Eucalyptus camaldulensis	River Red Gum	Retain
44	Callistemon viminalis	Weeping Bottlebrush	Remove
45	Allocasuarina sp.	She-oak	Remove
46	Agonis flexuosa	Willow Myrtle	Remove
47	Pittosporum undulatum	Sweet Pittosporum	Remove
48	Lagerstroemia sp.	Crepe Myrtle	Remove
49	Callistemon viminalis	Weeping Bottlebrush	Remove
50	Allocasuarina sp.	She-oak	Remove
51	Agonis flexuosa	Willow Myrtle	Remove
52	Pittosporum undulatum	Sweet Pittosporum	Remove
53	Lagerstroemia sp.	Crepe Myrtle	Remove
54	Callistemon viminalis	Weeping Bottlebrush	Remove
55	Allocasuarina sp.	She-oak	Remove
56	Agonis flexuosa	Willow Myrtle	Remove
57	Pittosporum undulatum	Sweet Pittosporum	Remove
58	Lagerstroemia sp.	Crepe Myrtle	Remove
59	Callistemon viminalis	Weeping Bottlebrush	Remove
60	Allocasuarina sp.	She-oak	Remove
61	Agonis flexuosa	Willow Myrtle	Remove
62	Pittosporum undulatum	Sweet Pittosporum	Remove
63	Lagerstroemia sp.	Crepe Myrtle	Remove
64	Callistemon viminalis	Weeping Bottlebrush	Remove
65	Allocasuarina sp.	She-oak	Remove
66	Agonis flexuosa	Willow Myrtle	Remove
67	Pittosporum undulatum	Sweet Pittosporum	Remove
68	Lagerstroemia sp.	Crepe Myrtle	Remove
69	Callistemon viminalis	Weeping Bottlebrush	Remove
70	Allocasuarina sp.	She-oak	Remove
71	Agonis flexuosa	Willow Myrtle	Remove
72	Pittosporum undulatum	Sweet Pittosporum	Remove
73	Lagerstroemia sp.	Crepe Myrtle	Remove
74	Callistemon viminalis	Weeping Bottlebrush	Remove
75	Allocasuarina sp.	She-oak	Remove
76	Agonis flexuosa	Willow Myrtle	Remove
77	Pittosporum undulatum	Sweet Pittosporum	Remove
78	Lagerstroemia sp.	Crepe Myrtle	Remove
79	Callistemon viminalis	Weeping Bottlebrush	Remove
80	Allocasuarina sp.	She-oak	Remove
81	Agonis flexuosa	Willow Myrtle	Remove
82	Pittosporum undulatum	Sweet Pittosporum	Remove
83	Lagerstroemia sp.	Crepe Myrtle	Remove
84	Callistemon viminalis	Weeping Bottlebrush	Remove
85	Allocasuarina sp.	She-oak	Remove
86	Agonis flexuosa	Willow Myrtle	Remove
87	Pittosporum undulatum	Sweet Pittosporum	Remove
88	Lagerstroemia sp.	Crepe Myrtle	Remove
89	Callistemon viminalis	Weeping Bottlebrush	Remove
90	Allocasuarina sp.	She-oak	Remove
91	Agonis flexuosa	Willow Myrtle	Remove
92	Pittosporum undulatum	Sweet Pittosporum	Remove
93	Lagerstroemia sp.	Crepe Myrtle	Remove
94	Callistemon viminalis	Weeping Bottlebrush	Remove
95	Allocasuarina sp.	She-oak	Remove
96	Agonis flexuosa	Willow Myrtle	Remove
97	Pittosporum undulatum	Sweet Pittosporum	Remove
98	Lagerstroemia sp.	Crepe Myrtle	Remove
99	Callistemon viminalis	Weeping Bottlebrush	Remove
100	Allocasuarina sp.	She-oak	Remove

Drawing Creation Date: 06.02.2026
 Plot / Issue Date: 06.02.2026
 File Location: S:\Projects\2025\2025 North St Kilda Childcare Centre2 - Drawings\06.02.2026\North St Kilda CC Landscape Plan_TP_202606.dwg

DATE	DESCRIPTION	REVISION	REVISION STATUS
06.02.25	TP Issue	R05	
02.10.25	TP Issue	R04	
23.06.25	TP Issue	R03	
23.06.25	TP Issue	R02	
24.04.25	TP Issue	R01	

OUTLINES

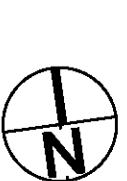
567 Spencer Street
West Melbourne
Victoria 3003 Australia
T +61 3 9326 5592
E office@outlines.com.au
www.outlines.com.au
ABN 62 374 337 456



DRAWINGS TO BE PRINTED IN COLOUR
Y M C B K

CLIENT City of Port Phillip
PROJECT ADDRESS 71 Argyle St, St Kilda

Scale: 1:100 @ A1 / 1:200 @ A3



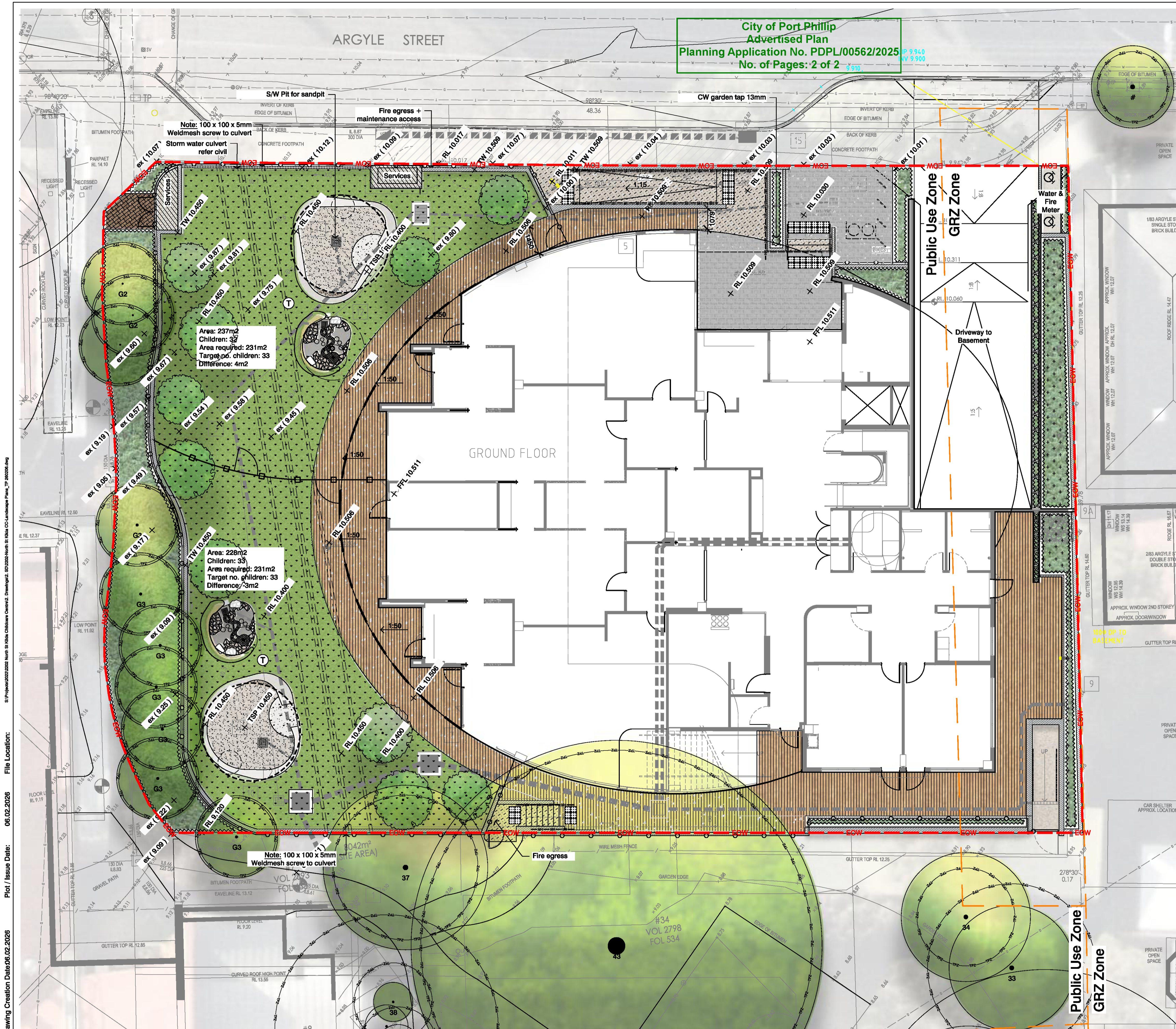
ISSUE STATUS
FOR PLANNING APPROVAL
NOT FOR CONSTRUCTION

PROJECT NAME North St Kilda Childcare Centre

DRAWING NAME Existing Conditions & Tree Removal / Retention Plan
DRAWING NO. L01

Rev R05

City of Port Phillip
Advertised Plan
Planning Application No. PDPL/00562/2025
No. of Pages: 2 of 2



LEGEND

- EOW Extent of Works
- Building Edge
- Building Over
- Planning Zones
- Existing Tree To Be Retained and Protected
- Existing Tree To Be Removed
- 12

SOFT LANDSCAPE

- Proposed Trees
- Proposed Mulched Garden Bed
225mm depth cultivated imported topsoil.
Plants 140mm pots @ 4/m², 75mm depth organic mulch. Subsoil Ag. drainage
- Proposed Rain Garden Area
225mm depth cultivated imported topsoil.
Plants 140mm pots @ 4/m², 75mm depth organic mulch. Subsoil Ag. drainage
- Proposed Organic Mulch
100mm depth woodchip
- Proposed Turf Lawn
100mm depth impact absorbing woodchip mulch, to approved test results

HARD LANDSCAPE

- Proposed Pedestrian Grade Plain Concrete Pavement
- Proposed Pedestrian Grade Exposed Aggregate Concrete Pavement
- Proposed Pedestrian Grade Coloured Concrete Pavement with stipple finish
- Proposed Sand Pit
600mm depth triple washed, white-washed fine sand supplied with approved test results, with compacted base pit and ag. drainage
- Proposed 400x200mm Unit Pavers
- Proposed Timber deck

LEVELS & GRADING

- Existing Level
- Proposed Finished Surface Level
- Proposed Top of Wall Level
- Proposed Finished Floor Level
- Proposed Paving Falls
- Agi Drainage
- 450x450 Pit to Sand Pit
- 300x300 Water Play Pit

LANDSCAPE FURNITURE & FIXTURES

- Proposed Feature Boulder
0.6 - 1m dia. locally sourced natural stone boulders, crushed rock sub-base, installed to be firm and stable
- Cantilever Shade Umbrella
Nom. 5 m diameter customised cantilever fabric shade umbrella with steel structure
- Perimeter fence, refer to architects drawings
- Proposed internal childcare fence - 1800h metal palisade with timber posts
- Proposed Handrail and Balustrade
- Proposed flush concrete edge of varying width and textures
- Waterplay area, animal sculpture, natural stone and channel with hand pump + pit
- Proposed Concrete Stairs with handrails
- Proposed Bike Rack

Drawing Creation Date: 06.02.2026
 Plot / Issue Date: 06.02.2026
 File Location: S:\Projects\2025\2025 North St Kilda Childcare Centre2 - Drawings\02 - Landscape Plans\TP_202606.dwg

OUTLINES

597 Spencer Street
West Melbourne
Victoria 3003 Australia
T +61 3 9326 5592
E office@outlines.com.au
www.outlines.com.au
ABN 62 374 337 456



CLIENT City of Port Phillip
PROJECT ADDRESS 71 Argyle St, St Kilda

Scale: 1:100 @ A1 / 1:200 @ A3



ISSUE STATUS
FOR PLANNING APPROVAL
NOT FOR CONSTRUCTION

PROJECT NAME North St Kilda Childcare Centre
DRAWING NAME Landscape Concept Plan - Ground Floor
DRAWING NO. L02
Rev R05

DATE	DESCRIPTION	REVISION STATUS	DATE	DESCRIPTION	REVISION STATUS
06.02.26	TP Issue	R05			
02.10.25	TP Issue	R04			
23.06.25	TP Issue	R03			
23.06.25	TP Issue	R02			
24.04.25	TP Issue	R01			