



Feel Safe. Be Safe.

Community Safety Plan 2025-2029

December 2025

Front matter

“Feeling safe is directly related to feeling connected. If everyone is included in the community, the community works better.”

VOSS focus group participant, October 2025

To be inserted:

- Accessibility/translation services page
- Acknowledgement of country:
Wominjeka. Council respectfully acknowledges the Traditional Owners and Custodians of the Kulin Nation. We acknowledge their legacy and spiritual connection to the land and waterways across the City of Port Phillip and pay our heartfelt respect to their Elders, past, present, and emerging.
- Contents page
- Message from the Mayor
- Diagram showing how this strategy relates to other Council documents

Vision and structure

Port Phillip aspires to be a thriving, inclusive, and resilient community where everyone feels safe, connected, and empowered to live their fullest lives.

Our vision for community safety is grounded in equity, prevention, and collaboration—where public spaces are welcoming and accessible, and safety is co-created through strong partnerships with residents, Victoria Police, and service providers.

We take a public health approach to addressing safety, prioritising early intervention, harm reduction, and trauma-informed care.

Guided by data, lived experience, and innovation, we continuously adapt to emerging challenges while ensuring that all voices—especially those of our most vulnerable—are heard and valued.

Together, we are building a future where community safety is built on wellbeing, dignity, and inclusion for all.

The Community Safety Plan sits alongside the Homelessness & Affordable Housing Strategy and key Council documents to deliver on this commitment.

Purpose:		
Improve feelings and experiences of safety by creating welcoming and safe spaces, supporting communities, strengthening partnerships and reducing harm		
Pillar 1	Pillar 2	Pillar 3
Creating safer public places	Improving communication and information	Strengthening social cohesion and connecting communities
Objective	Objective	Objective
Design and maintain safe, accessible, welcoming, and climate resilient public spaces.	Improve communication and deliver programs which support a better-informed and engaged community.	Empower and support communities to thrive, collaborate and connect

The Community Safety Plan structure weights all pillars of equal value.

Reporting, implementation and monitoring

Reporting

The City of Port Phillip's Community Safety Plan outlines how Council will work with the community to create a safer Port Phillip. Progress on the Plan will be monitored through monthly updates on the community safety webpage and quarterly reporting in the CEO Reports. Each year, an annual overview will be included in Council's Annual Report.

These reporting mechanisms ensure that targets are met and milestones are tracked consistently. They also allow Council to make timely adjustments if unexpected issues arise or community priorities change.

Implementation and monitoring

The Community Safety Plan will be delivered through a number of Council teams.

At the end of each year implementation will be reviewed, including identifying which actions were successfully completed, which actions were not successfully completed and why, which actions should be extended into the following years' implementation plan, and which should be discontinued.

Measuring progress overall

The following outcome indicators in the Plan for Port Phillip measure the City's progress towards a safe and liveable City.

These indicators relate to things Council influences but does not directly control. Progress against these indicators is dependent on a range of factors external to Council, including actions from other levels of government and the social services sector but will be monitored to understand progress.

Outcome Indicators	Result 2021/22	Result 2022/23	Result 2023/24	Baseline 2024/25	1 year (2025/26)	4 years (2028/29)
Incidents of crime per 100,000 pop (City of Port Phillip) <i>Crime Statistics Agency data</i>	9011	8892	9596	10,974	maintain	maintain
Community perception of safety in public areas of the City of Port Phillip <i>Community Satisfaction Survey (CSS) rating scale and survey methodology changed in 2024/25</i>	no data	no data	no data	7.6	TBD	TBD

Service performance measures

The following measures in the Plan for Port Phillip relate to the community safety areas covered by this Plan:

Objective Outcome	Measure	Baseline 2024/25	Forecast 2025/26	Forecast 2026/27	Forecast 2027/28	Forecast 2028/29
Pillar 1 Design and maintain safe, accessible, welcoming, and climate resilient public spaces.	City amenity patrols conducted daily	90%	>90%	>90%	>90%	>90%
Pillar 2 Improve communication and deliver programs which support a better-informed and engaged community.	Community safety plan actions on track	80%	>80%	>80%	>80%	>80%

These new measures will help us understand how the Community Safety Plan is tracking.

Service statistics

The following service statistics in the Plan for Port Phillip relate to the community safety areas covered by this Plan (Expected trend: + increase; 0 no change; - decrease):

Objective Outcome	Statistic	Result 2020/21	Result 2021/22	Result 2022/23	Result 2023/24 baseline	Expected trend
Pillar 1 Design and maintain safe, accessible, welcoming, and climate resilient public spaces.	City amenity patrols of hotspot locations (Fitzroy and Acland Streets)	365	696	1,460	1,825	+
Pillar 2 Improve communication and deliver programs which support a better-informed and engaged community.	Customer community safety and housing and homelessness enquiries (new stat 22/23)	No data	No data	344	455	0

These new measures will help us understand how the Community Safety Plan is tracking:

Objective Outcome	Measure	Baseline 2024/25	Forecast 2025/26	Forecast 2026/27	Forecast 2027/28	Forecast 2028/29
Pillar 1 Design and maintain safe, accessible, welcoming, and climate resilient public spaces.	Safety audits undertaken to improve public places	1	2	3	4	5
Pillar 2 Improve communication and deliver programs which support a better-informed and engaged community.	Community Safety Programs (Linking Neighbours, Police Forums, Trauma Aware Port Phillip Workshops)	10	12	12	12	12
Pillar 3 Empower and support communities to thrive, collaborate and connect.	Community Safety Roundtable Sessions	1	2	2	2	2

Purpose of the Plan

To improve feelings and experiences of safety by creating welcoming and safe spaces, supporting communities, strengthening partnerships and reducing harm.

Council respects and supports the right of all members of our community to feel safe and be safe. We acknowledge the diversity of lived experiences and the impacts that different circumstances can have on people's lives.

Community safety is a priority for the City of Port Phillip. A safer city contributes to positive health, social and economic outcomes for our community. Feeling and being safe influences how people use and interact with each other and with the built environment, local amenities, parks, and community facilities.

"In reflecting the trust people have in one another, cohesive communities also provide a sense of safety, allowing people to live in their communities to their fullest and without fear of becoming the victim of violence and crime. A cohesive society is therefore one that supports people to be happy, safe, and connected."

The City of Port Phillip's Community Safety Plan will guide the ways Council will contribute to, and support, community safety across our municipality over the next four years.

The Plan will contribute to achieving Port Phillip's strategic direction of **a safe and liveable City**, by enhancing the safety and resilience of our community and ensuring the municipality remains a place where everyone feels welcome and has a sense of belonging.

The development of this Plan has been informed by in-depth background research, other Council strategies and plans, community members and organisations who shared their concerns and priorities as part of the engagement process for this Plan and the Deliberative Engagement Panel associated with the development of the Plan for Port Phillip, the Community Safety Roundtable Report, and benchmarking across other councils.

Council recognises that creating a safer community is a shared responsibility. Over the next four years, we will continue to work in partnership with residents, community organisations, Victoria Police, and state and federal governments to deliver

¹ <https://scanloninstitute.org.au/wp-content/uploads/Mapping-Social-Cohesion-2024-Report.pdf> p 80

coordinated, trauma-aware, and inclusive approaches to safety—ensuring Port Phillip remains a place where everyone belongs.

Through this plan Council aims to build a safe, resilient, and connected community, and a City that is welcoming for all to live, work and visit.

The plan is set out in five parts:

Part 1 Introduction

Part 2 Context

Part 3 Our roles

Part 4 Actions and Funding

Part 1 Introduction

Why we need a new Community Safety Plan

"Community health and wellbeing is ... supported by feeling safe and having ample opportunities for participation."

Plan for Port Phillip (Municipal Health and Wellbeing Plan)

Council is committed to ensuring that all our community feels welcome and safe in the City of Port Phillip.

The Community Safety Plan demonstrates Council's commitment and contribution to working in partnership with community and key stakeholders to provide a safer and more vibrant community for everyone. It focuses on making our community a safer and more resilient place to live, work and visit.

The key findings from the 2025 Annual Community Satisfaction Survey for the City of Port Phillip highlight that community safety is a significant concern for local residents with 21% of respondents identifying safety, policing, and crime as top issues needing attention—substantially higher than the metropolitan average of 7%.

Perceptions of safety in public areas were notably lower than regional benchmarks, especially at night (6.5/10), which was 8% below the metropolitan average. Daytime safety was rated more positively at 8.3/10, but still slightly below average. Specific areas of concern included local activity centres and the foreshore, with respondents citing drugs, alcohol, crime, and lack of visible policing as key reasons for feeling unsafe.

Concerns around safety were closely linked to overall satisfaction with Council. Respondents who raised safety, homelessness, or drug-related issues were 2–4% less satisfied with Council's performance. These issues also intersected with broader social challenges, such as homelessness (8%) and drug and alcohol use (4%), which were more frequently raised in Port Phillip than in other municipalities. The survey highlighted a need for more coordinated, welfare-based responses to vulnerable populations and culturally appropriate mental health support, particularly for First Nations residents.

The Crime Statistics Agency reported that criminal incidents (multiple offences that are recorded on a single date and location) in Port Phillip had risen by 23.1% compared to

the previous year (this data reflects year ending March 2025). Total offences recorded (illegal activity) in Port Phillip rose by 20.7% and family violence rose by 20.3%.

The Community Safety Plan aligns with state and federal strategies that relate to crime prevention, family violence, reducing harm from substance abuse, emergency response and community safety. It also aligns with the Plan for Port Phillip and the Municipal Health and Wellbeing priorities, and other relevant Council strategies, plans, and policies.

Community safety is determined by a range of complex environmental, social and economic factors and is best achieved by working together across community, government, and organisations. No one entity alone can create a safe community – it is the responsibility of everyone together.

Council's previous Community Safety Plan was adopted in 2019 and concluded in 2025 after an extension by Council of two years following the impact of Covid-19 which delayed delivery of some actions. Its focus was on creating safe spaces, building resilience, and living healthy. All its actions were achieved.

How this new Plan was developed

This Plan has been developed through extensive engagement with the Port Phillip community and our network of community service providers, a review of other councils' community safety approaches, consideration of the State and Federal legislative and policy landscape, a Community Safety Roundtable, review of Council engagement reports across a range of related topics over the last two years, and a review of Council's previous Community Safety Plan.

The information gathered shaped the objectives and identified actions, advocacy and partnerships. It also helped develop new and innovative responses, integrate successful models from elsewhere, and create opportunity for more active participation and beneficial outcomes.

Key engagement activities included:

- Aug – Dec 2024 Phase One: Pre-engagement with key stakeholders to test our engagement approach
- March 2025 Phase Two: Community Safety Roundtable discussion with stakeholders to understand community safety and local impacts

- May–June 2025: Phase Three: Community engagement on priorities for new plan including broad engagement through surveys, workshops, and targeted conversations
- July 2025: Consultation with internal stakeholders to ensure operational capacity for proposed actions
- July 2025: Analysis of Customer Satisfaction Survey data, focusing on feedback around homelessness and safety
- August 2025: Development of a Gender Impact Assessment
- October – November 2025 Phase Four: Community feedback on draft Plan

What we heard from the community

Council engaged on this project in four phases as noted in the timeline above.

Phase One was pre-engagement with key stakeholders to test the engagement approach.

Phase Two was convening of a Community Safety Roundtable on 19 March 2025, held in response to ongoing safety concerns across the municipality. The Roundtable was attended by local health, housing, legal and community services, and Victoria Police.

Phase Three set out to identify and prioritise community's needs and was conducted from 22 May to 29 June 2025. We heard from a total of 1,316 participants throughout the community engagement process. A full engagement report is available on the Council website.

Engagement included:

- Online and paper-based survey
- Pop-ups and community activities
- Community workshops
- Engagement at Committees and meetings
- Submissions and Emails
- Review of relevant recent Council engagement activities (e.g. Plan for Port Phillip)

Respondents were from a range of different demographic groups.

The most selected important areas when thinking about community safety were housing and homelessness, personal and property safety (particularly for survey respondents with a *significant connection* to COPP and *pop-up* participants) and crime prevention activities (particularly for survey respondents with a *significant connection*

to COPP and *pop-up* participants), followed by mental health and wellbeing and family and gender-based violence.

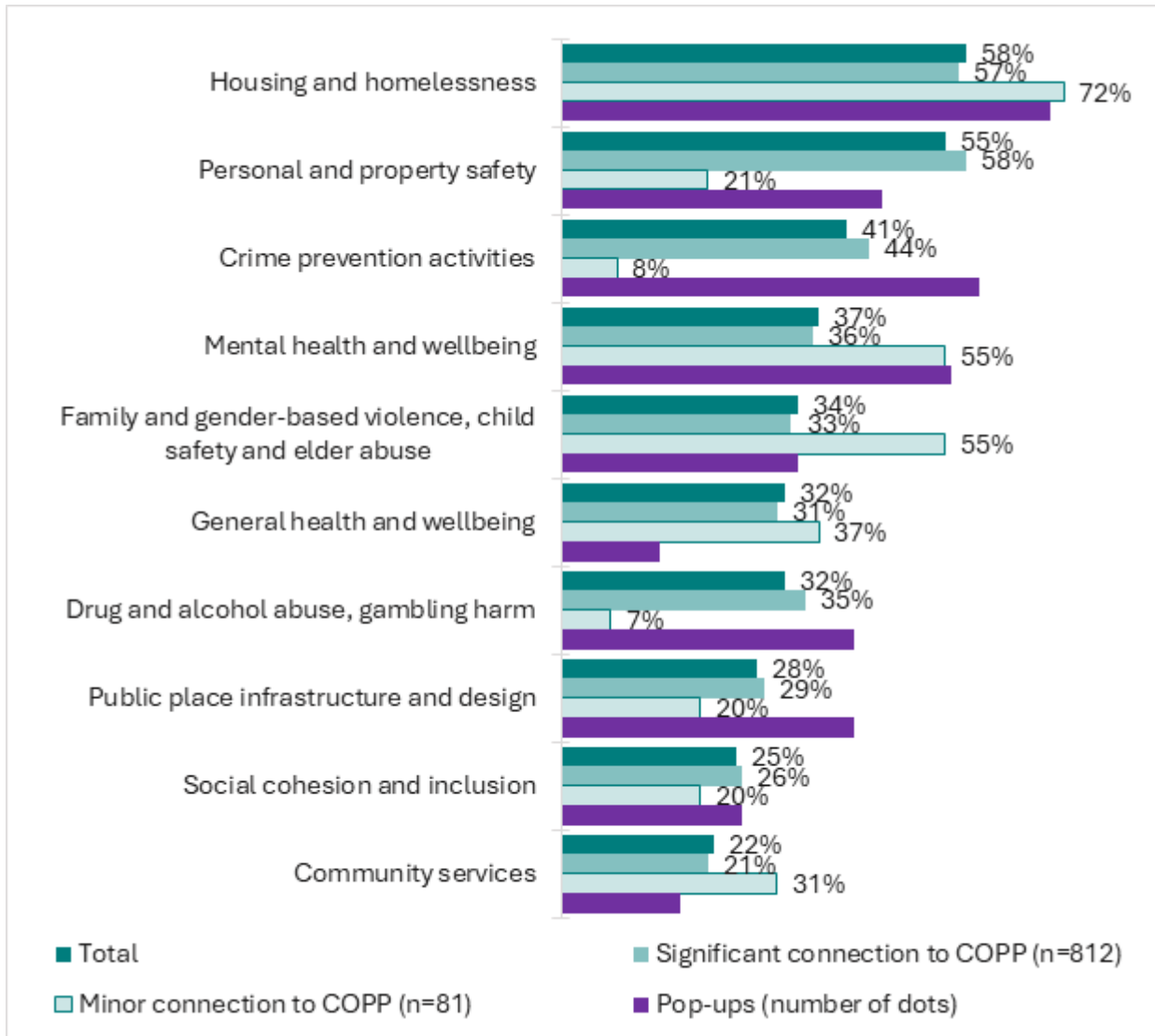


Figure 1: Most important areas when thinking about community safety

Throughout engagement, community members expressed strong concern for housing and homelessness, emphasising the need for safe shelter and support for those marginalised. Safety in public spaces was a recurring theme, with personal experiences highlighting issues such as drug use, mental health challenges, and crime, and underscoring the importance of feeling free from violence and fear. These concerns were often linked to broader systemic issues, including the need for improved public infrastructure, community services, and social cohesion.

Underlying factors like mental health, general wellbeing, and substance use were seen as foundational to community safety. Respondents also stressed the importance of

protecting vulnerable groups—such as children, elderly, and victim survivors of family violence—and called for inclusive, supportive environments. Overall, the feedback reflects a desire for holistic approaches that address both immediate safety concerns and the broader social determinants of wellbeing.

Please refer to the full community engagement report for more details of engagement and more detailed feedback.

Phase Four tested the draft Community Safety Plan to seek feedback on how well the document addressed to community concerns, and to prioritise Council’s responses. The Engagement Report for this phase is also available on the Council website.

Consideration of other strategies, plans, and policies

Council adopts a holistic and integrated approach to enhancing community safety. A range of actions contributing to community safety are already being implemented through existing Council strategies, plans, and policies, as outlined in the table below. While these actions align with the priorities of the Community Safety Plan, they are not duplicated within the Plan itself, as they are sufficiently addressed elsewhere.

Actions associated with each of these documents are publicly reported to Council.

Additionally, the **Community Safety Roundtable Report** undertaken in March 2025, and the Deliberative Engagement Panel undertaken in February 2025, outlined several recommendations for community safety in the City of Port Phillip.

The **Customer Satisfaction Survey** results (June 2025) highlighted aspects of community safety which has also been considered in developing this plan.

Council’s **Homelessness and Affordable Housing Strategy** directly complements the Community Safety Plan. Both documents have been strongly informed by the Community Safety Roundtable and community feedback which supported the holistic approach led across these key programs. Rather than repeat actions across these documents, Roundtable recommendations were considered for each document, with those relating specifically to homelessness, housing and programs, such as transition to housing supports, service gaps, opportunities and alternate models, hubs, and First Nations gathering places, allocated to the Strategy.

The **Reconciliation Action Plan** has a focus on the need for gathering opportunities which will enhance and support community and cultural safety for First Nations people in Port Phillip.

A **Gender Impact Assessment** has also been undertaken to ensure a gender and intersectional lens has been applied to the actions.

The Community Safety Plan complements Council priorities in the Plan for Port Phillip and the **Gender Equality Action Plan** to address family and gender-based violence. Actions in this Plan are underpinned by an holistic approach to preventing family and gender-based violence in Port Phillip. Further, there is a specific action in this Plan to enhance place-based collaboration across key stakeholders to improve coordinated responses to family violence.

Other documents which informed the development of this plan have been included in the reference section at the end of this document.

Alignment with Council strategies, plans, and policies

Strategy / Plan	Overview of content	Actions that relate to this Community Safety Plan
<p>Draft Homeless and Affordable Housing Strategy 2025-2035</p> <p><i>(strong correlation with Community Safety Plan)</i></p>	<p>The Homelessness and Affordable Housing Strategy seeks to achieve Council's vision to be a liveable and vibrant City that enhances community connection and wellbeing. Homelessness and affordable housing are recognised as significant health priorities with secure, safe, and stable places to live being considered essential building block of health and fundamental for Council achieving its vision. Through this strategy Council aims to improve the supply and diversity of affordable housing and ensure appropriate supports are available for people to maintain housing.</p>	<ul style="list-style-type: none"> • Maintain and enhance existing partnership protocols among CoPP, Victoria Police, and key service providers (e.g., Launch Housing, Ngwala Willumbong Aboriginal Corporation). • Identify potential service gaps, review and strengthen funding agreements with service providers who work with people in Port Phillip who have complex needs and face multiple barriers to securing and maintaining housing. • Identify, develop, and sustain accessible, safe daytime social spaces ("hubs") with appropriate and relevant facilities for rough sleepers and vulnerable community members. • Use arts, libraries and events to foster inclusion and a sense of belonging, as one way to support people from challenges such as homelessness, mental health issues and substance use. • Explore new partnerships to support people experiencing poverty with food relief and rental support. • Support the establishment of a Community Gathering Place that respects gathering as a cultural norm and practice for Aboriginal people. • Formalise service agreements with clear mandates and accountability for outreach and support. • Develop an anti-stigma campaign targeting perceptions of mental health, substance abuse, and homelessness to enhance safety perceptions. • Invest in and expand the Trauma Aware Port Phillip group. • Explore peacemaking programs to reduce community conflict (e.g., Neighbourhood Justice Centre model, operating in City of Yarra). • Cobden Street Pocket Park and Palais Theatre precinct to improve pedestrian safety and reduce vehicle intrusion. • Enhance pedestrian safety between Donovan's and Marina Reserve.
Public Space Strategy 2022-2032	Sets the vision and blueprint for the future of our public spaces in Port Phillip. The Community Safety Plan	

Strategy / Plan	Overview of content	Actions that relate to this Community Safety Plan
<i>(strong correlation with CSP)</i>	acknowledges the need for public spaces to be safe and accessible and reflects actions within the strategy.	<ul style="list-style-type: none"> • Enhance safe access between Port Melbourne and Fishermans Bend. • Ensure appropriate amenities in public spaces such as shaded seating, lighting, and wayfinding to improve safety and comfort. • Ensure safe walking access without crossing major roads or barriers. • Improve safety and accessibility for children. • Improve safety through environmental design principles. • Increase greening and seating to enhance safety and comfort. • Repurpose underused areas for public use. • Trial closures (e.g., Blessington Street) to link parks and improve pedestrian safety.
Plan for Port Philip <i>(strong correlation with CSP)</i>	The Plan for Port Phillip 2025-2035 guides how Council will serve the community. The Plan defines the services and projects Council will deliver for the people who live, work and play in City of Port Phillip.	<ul style="list-style-type: none"> • Address the drivers of family violence and all forms of violence against women by tackling gender inequality in our community and organisation, and ensuring our staff are trained in risk assessment for family violence when relevant to their role. • Advocate for funding and policy changes to support community safety infrastructure. • Combat discrimination, racism, and antisemitism through community-led programs and education. • Promote social cohesion via grants, events, and inclusive programming. • Support multicultural and LGBTIQ+ communities through targeted action plans and inclusive services. • Apply Crime Prevention Through Environmental Design (CPTED) principles in public space projects. • Deliver public space upgrades that reduce crime and increase safety. • Implement summer management strategies to ensure safe public spaces during peak visitation. • Improve lighting and visibility in public areas to enhance perceptions of safety. • Install bollards and other protective infrastructure in high-risk public areas.

Strategy / Plan	Overview of content	Actions that relate to this Community Safety Plan
Accessibility Action Plan 2023–2025	Local government has an important role to play in local service, program provision and advocacy to ensure equitable opportunities in social, economic, and civic life for all community members. The Accessibility Action Plan sets out the actions Council will take to ensure that the City of Port Phillip is a community where people with disability are valued, included and feel a sense of belonging.	<ul style="list-style-type: none"> • Maintain amenity and safety through consistent enforcement of local laws and animal management. • Provide rapid response services and local law amenity patrols. • Update the Graffiti Management Plan to improve effectiveness of graffiti removal. • Address terrorism-related risks with proactive capital investments in safety infrastructure. • Deliver a Graffiti Removal Program, prioritising offensive content. • Facilitate community leadership in emergency preparedness and resilience. • Renew public place CCTV systems across four precincts to ensure functionality and maintenance. • Review and implement a new Community Safety Plan to enhance safety and resilience. • Review and implement the Municipal Emergency Management Plan and subplans. • Train staff and develop procedures for emergency response and recovery. • Update Council's Local Law to ensure proportionate legal mechanisms for community safety. • Apply universal design principles to improve safety and accessibility of public spaces.
Act and Adapt Strategy 2023–2028	The strategy sets out City of Port Phillip's long-term commitment to environmental sustainability for the organisation and the wider community. It establishes a	<ul style="list-style-type: none"> • Assess climate hazards and vulnerabilities across Council assets and services. • Develop a plan to address sea level rise and inundation risks.

Strategy / Plan	Overview of content	Actions that relate to this Community Safety Plan
	pathway to transition Port Phillip into a greener, cooler, more liveable city with lower carbon emissions; a water sensitive city adapting and resilient to climate change and with a sustained reduction in waste.	<ul style="list-style-type: none"> • Support community groups to prepare for flooding, heatwaves, and other climate impacts. • Update flood and heatwave emergency response plans.
Advocacy Priorities	Creating a safe, inclusive community is a shared responsibility, one that requires coordinated, well-funded action across all levels of government. The City of Port Phillip is calling for urgent intervention from both Federal and State Governments to address growing concerns around community safety and to actively promote social cohesion.	<ul style="list-style-type: none"> • Strengthen place-based safety infrastructure. • Support trauma informed and welfare-based responses. • Expand affordable and social housing supply. • Promote social inclusion and community connection. • Improve safety perceptions and public confidence. • Enhance support for renters and key workers. • Strengthen partnerships and service coordination.
City of Port Phillip Events Strategy 2023–2026	The City of Port Phillip aims to plan, attract and direct events to ensure our city is welcoming, healthy, safe and vibrant for all. It is commonly recognised and accepted that events bring a wealth of benefits to a community, from the health and wellbeing of residents through to economic development for local businesses, cultural vibrancy and social engagement.	<ul style="list-style-type: none"> • Collaborate with Victoria Police, EPA, VCGLR, and transport providers to minimise amenity impacts and maximise cooperation. • Activate areas requiring support based on visitation, public behaviour, or perceptions of safety.
Climate Emergency Action Plan 2023–2028	Port Phillip Council declared a Climate Emergency in 2019, recognising that climate change is a global and that everyone must play their part. The declaration responds to the critical climate situation and demonstrates Council's commitment to act. The Climate Emergency Plan influences actions within this plan with regard maintaining community resilience.	<ul style="list-style-type: none"> • Support community-led climate adaptation plans and establish partnerships to improve resilience.
Community Amenity Local Law 2023	The purpose of this Local Law is to provide for the peace, order, and good governance of the City of Port Phillip in a way that is complementary to Council's Plan by:	<ul style="list-style-type: none"> • Prohibits harassment, nuisance, and unsafe conduct. • Enforces compliance with signage and officer directions. • Prohibits camping on Council land unless homeless or in need.

Strategy / Plan	Overview of content	Actions that relate to this Community Safety Plan
	<ul style="list-style-type: none"> Managing the uses and activities on roads and Council land Managing, regulating and controlling uses that interfere with a healthy and safe environment 	<ul style="list-style-type: none"> Owners must maintain safety and appearance of their land. Enforcement of parking and vehicle repair rules. Authorised officers can issue notices, impound items, and act in urgent circumstances.
Creative and Prosperous City Strategy 2023–2026	The Creative and Prosperous City Strategy 2023–26 outlines Council’s commitment to create a thriving social, cultural and economic future for the City of Port Phillip and a continued focus on economic development and tourism, festivals, events, live music, our screen industry and arts, culture and heritage. It outlines the actions Council will take in close collaboration with community, business, entertainment venues and our creative organisations.	<ul style="list-style-type: none"> Support for cultural expression and inclusion. Celebrate First Peoples content and inclusive festivals. Truth-telling and storytelling programs. Support cultural safety and healing through arts and events. Public space activation with safety focus. Enhance prosperity while maintaining safety and quality of life for residents.
Domestic Animal Management Plan 2026–2029 (draft)	The DAMP provides a strategic approach to promoting and encouraging responsible pet ownership, the welfare of dogs and cats and the protection of the community and environment from nuisance dogs and cats. It explains how Council currently manages programs and sets out actions to improve and grow the ways in which Council delivers domestic animal management programs. These objectives and guidelines aim to create a place where pets and the community can live together, without adversely impacting on the environment or community amenity	<ul style="list-style-type: none"> Promote responsible pet ownership through strong and simple messages, delivered through multiple channels. Promote and encourage responsible cat ownership Provide a consistent approach to management of dogs in public spaces across Port Phillip Increase patrols, education and enforcement activities. Continue to deliver best practice in management of dog attacks. Reduce community safety risks associated with walking multiple dogs at a time
Every Child Our Future: Children’s Services Policy 2020–2026	This policy describes Council’s role in children’s services and what we will do to support the wellbeing and development of children and families in our community. The City of Port Phillip has developed the Children’s	<ul style="list-style-type: none"> Assertive outreach for vulnerable children. Targeted support to access childcare and early education. Child Safe Organisation Commitment. Zero tolerance for child abuse; all staff responsible for detecting and reporting. Monitoring outcomes for vulnerable children. Use data to track development and wellbeing.

Strategy / Plan	Overview of content	Actions that relate to this Community Safety Plan
	Services Policy to guide how we support, deliver and invest in children's services.	<ul style="list-style-type: none"> • Support for families experiencing vulnerability. Build capability in services to respond to family violence, neglect, and mental health. • Training for Child Safe Standards. Education and capacity building across children's services.
Gender Equality Action Plan 2022–2025	As a defined entity under the Gender Equality Act 2020, Council has an obligation to promote workplace gender equality through gender auditing and action planning, and to consider gender equality in our community facing policies, programs and services. This plan is a key mechanism to achieving the Council Plan commitment to provide 'action that addresses the drivers of family violence and all forms of violence against women by tackling gender inequality in our community and organisation'.	<ul style="list-style-type: none"> • Complaint Procedures Review. Ensuring victim-centric processes for reporting inappropriate behaviour. • Family Violence Leave and Support. Review and promotion of leave policies for staff experiencing family violence. • Training on Responding to Family Violence. Specific training for HR and managers on disclosures and support. • Zero Tolerance for Sexual Harassment. Annual communication and mandatory training for staff and councillors.
Graffiti Management Plan 2019–2024	The Graffiti Management Plan 2019–2024 provides a clear framework and guidelines for the management of graffiti within the City of Port Phillip. The Plan outlines Council's approach to dealing with illegal graffiti, as well as outlining opportunities to mitigate against future graffiti and how this aligns with Council's wider strategies.	<ul style="list-style-type: none"> • Collaborative Graffiti Mitigation Projects. Partnerships with utilities and transport providers to improve graffiti removal. • Precinct-Based Graffiti Removal. Coordinated removal in high-traffic areas like Acland Street, Bay Street, Clarendon Street, etc. • Rapid Removal of Offensive Graffiti. Offensive and obscene graffiti will be removed within four hours of notification. • Weekly Patrols of Public Toilets. Dedicated patrols to monitor and remove graffiti weekly from public toilets.
LGBTIQA+ Action Plan 2023–2026	The LGBTIQA+ Action Plan identifies the needs and aspirations for LGBTIQA+ communities in our municipality and is a key part of our commitment to an LGBTIQA+ inclusive Port Phillip. This plan will guide how we embed LGBTIQA+ inclusion into our roles as a service provider, leader, ally, consumer and in our workplace.	<ul style="list-style-type: none"> • Embed safety into Council's Risk Management Framework. Embed assessing risks to the inclusion and safety of diverse communities, including LGBTIQA+ communities. • Provide gender-affirming facilities. Consider options to provide all-gender bathroom and changeroom options in Council facilities. • Publicly respond to incidents of discrimination. Take preventative steps to enhance safety.

Strategy / Plan	Overview of content	Actions that relate to this Community Safety Plan
Library Action Plan 2021–2026	The Library Action Plan ensures that CoPP libraries stay responsive to community needs and make Port Phillip a creative, liveable, prosperous and socially connected city for everyone.	<ul style="list-style-type: none"> • Update Community Safety Plan to enhance safety for LGBTIQ+ communities. • Our Libraries will focus more services and programs on supporting the most vulnerable members of our community, for example the homeless, the economically disadvantaged, older people and children at risk • Port Phillip libraries will provide education and public forums on topics of climate change and will plan crisis responses to support and relieve our residents during extreme heat days, smoke pollution and flooding events. • The libraries will prioritise services and programs for disadvantaged individuals and groups and create safe, welcoming spaces where people can read, relax, study, work and take part in social activities. • Establish libraries as climate emergency relief centres and host public education, discussions and forums on climate change and sustainability • Build partnerships and explore co-location opportunities with organisations such as public and non-profit agencies, community groups, schools and businesses to increase outreach activities that take the library into the community, with a focus on disadvantaged and vulnerable communities and individuals. • Deliver technology support and digital literacy programs for people who lack skills and confidence in using technology devices, tools and platforms • Create safe, welcoming spaces where people can read, relax, study, work and take part in social activities.
Move, Connect, Live: Integrated Transport Strategy 2018–2028	Aims to create neighbourhoods with access to key services within a 10-minute walk. It seeks Victorian Government funding for early delivery of connections to public transport, public space and streetscapes, footpaths, and bike lanes in Fishermans Bend; and to optimise wider transport connections for both current and future residents and workers.	<ul style="list-style-type: none"> • Partnering to improve reliability and accessibility. • Tram stop upgrades and Metro Tunnel integration. • Partner with Parks Victoria for Shrine to Sea boulevard: Deliver safety and streetscape improvements for walking and bike riding. • Partner with VicRoads for St Kilda Road improvements: Enhance pedestrian and bike rider safety.

Strategy / Plan	Overview of content	Actions that relate to this Community Safety Plan
Positive Ageing Policy 2023-2027	The Positive Ageing Policy seeks to ensure that Port Phillip is an age-friendly city across three areas one of which includes: A city where all older people have opportunities to take part in community and civic life and can access the services, programs and housing that meet their changing needs as they age.	<ul style="list-style-type: none"> • Deliver Healthy Tracks to School infrastructure: Improve walking routes to schools for child safety. • Improve pedestrian facilities and crossings: Widen footpaths, reduce crossing barriers, and improve safety. • Deliver blackspot safety improvements. • Support electric vehicle infrastructure: Reduce emissions and improve safety through quieter, cleaner transport. • Community Transport Services. Free, accessible transport to libraries, markets, and medical services. • Neighbourhood Engagement Program. Pop-up events to share Council priorities and gather input. • Port Phillip Zero Project. Coordinated support for older people experiencing homelessness. • Seniors Register. Emergency contact list shared with police for vulnerable older residents.
Reconciliation Action Plan 2025-2027	The Reconciliation Action Plan (RAP) Represents Council's continued commitment to support meaningful and mutually beneficial relationships with First Peoples in Port Phillip. The RAP sets out the steps we will take to advance those things we do well and, improve how we support our First Peoples community.	<ul style="list-style-type: none"> • Anti-discrimination strategies. Review HR policies, educate leaders, and embed inclusiveness. • Cultural safety training. Ensure services respect identities and experiences of Aboriginal children. • Deliver programs addressing at-risk individuals. Includes reconciliation initiatives, amenity, and local area response. • Support culturally appropriate housing and services. Partner with Aboriginal service providers to ensure safe housing. • Support for Sorry Business. Assist with ceremonial aspects and access to Council-managed spaces. • Truth-telling and storytelling programs. Led by First Nations people to foster understanding and healing.

Part 2 Context

In developing the new Community Safety Plan, we considered the demographic diversity, creativity, and resilience of the Port Phillip community.

Who are we?

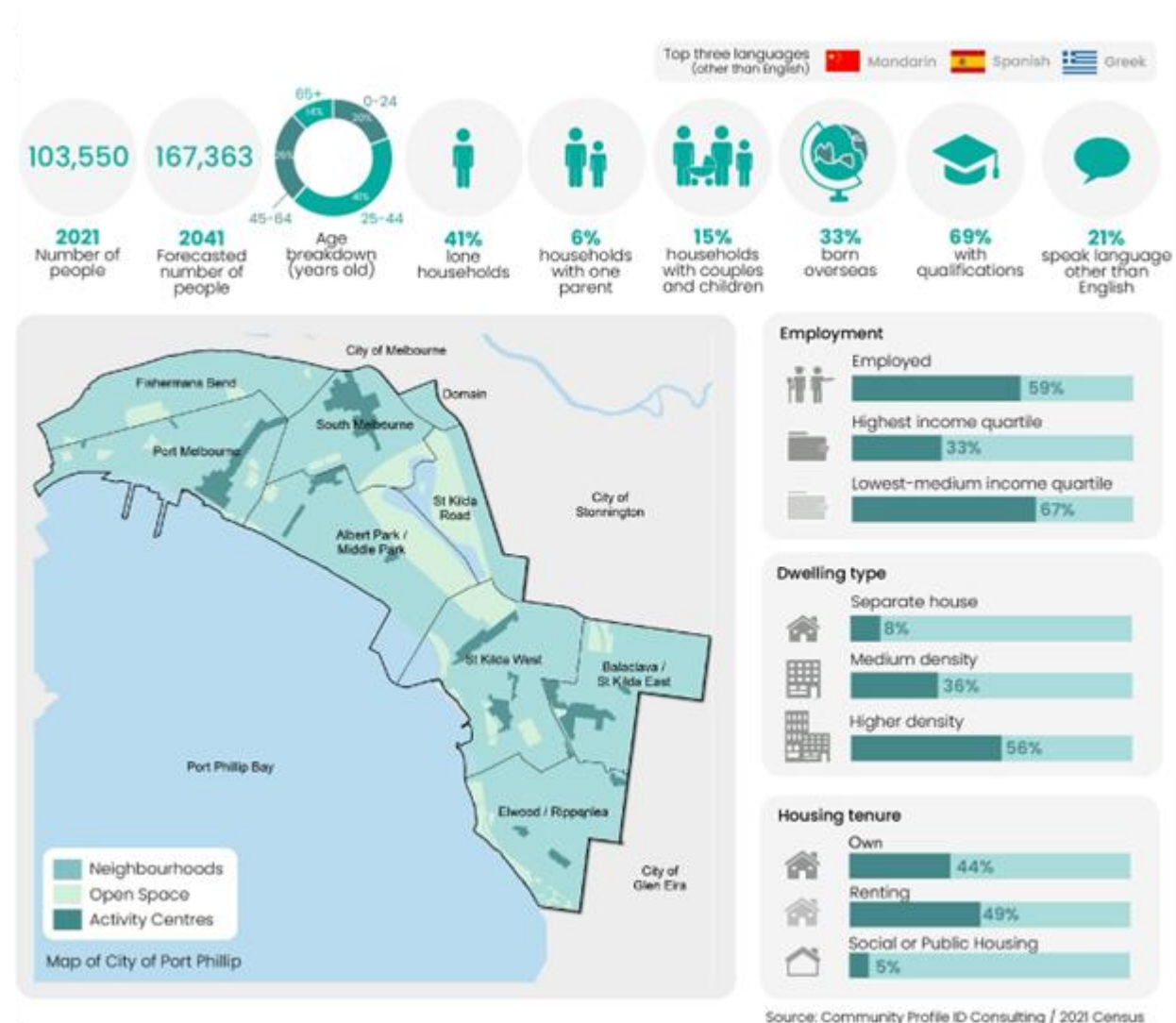


Figure 2: City of Port Phillip's current demographics

Port Phillip has a proud tradition of inclusion, and we warmly welcome everyone. We celebrate our rich diversity and acknowledge the unique experiences of groups at risk of exclusion, including First Nations people, children and young people, LGBTIQ+ communities, newly arrived migrants, people experiencing homelessness, people with disability, older residents, and women and girls.

First Peoples have cared for Country across our municipality for generations, and their ongoing connection remains central to our community identity.

Our cultural diversity continues to grow—residents come from over 160 countries, speaking more than 120 languages and dialects. One in three were born overseas, and over half have at least one parent born overseas. While many residents are affluent, educated, and employed, we also see pockets of disadvantage, particularly related to housing affordability and food security. Local food services are under pressure, with rising demand and fewer donations and volunteers.

Our population is ageing, with over 19,000 residents aged 60 and above. Older people contribute significantly through volunteering and community participation, though they may also need additional support.

Almost one in five people in Australia identify as a person with disability and the number of people with disability in Australia is increasing.

Businesses and traders play a vital role in shaping an inclusive and vibrant Port Phillip. Through employment, local initiatives, and partnerships, they help foster social connection and economic opportunity for all.

As we grow and change, we remain committed to building a community where everyone feels safe, valued, and supported.

Wellbeing and safety

Creating safe, welcoming spaces is essential to the health and wellbeing of the Port Phillip community. When people feel safe, they're more likely to connect with others, build trust, and enjoy a stronger sense of belonging^{2 3}.

A person's sense of safety can be shaped by their surroundings—things like poor lighting, graffiti, damaged property, or a lack of visibility can all have an impact⁴. Social behaviours also play a role, such as public alcohol or drug use, dogs off-leash, or unsafe road and bike use.

² Baum, FE, Ziersch, AM, Zhang, G & Osborne, K 2009, 'Do perceived neighbourhood cohesion and safety contribute to neighbourhood differences in health?', *Health & Place*, vol. 15, no. 4, pp. 925–34.

³ [FINAL_Social Cohesion and Pro-Social Responses to Perceptions of Crime.pdf](#)

⁴ Australian Bureau of Statistics (ABS) 2010, *Australian social trends: Who's afraid? Feelings of personal safety*, ABS cat. no. 4102.0, ABS, Canberra

Personal experiences matter too. People who have experienced crime, trauma, or live with mental health conditions may feel less safe, even in familiar environments.

When individuals feel secure in their neighbourhoods, they're more likely to engage with their community, reducing isolation and strengthening social ties.

Feelings and perceptions of safety

The latest results from the community satisfaction survey 2025 show that residents' perception of safety has dropped.

The survey results indicate varied perceptions of safety across public spaces within the City of Port Phillip. Public areas during daylight hours received the highest safety rating (8.3 out of 10), with only 3% of respondents reporting feeling unsafe. The beach and foreshore followed closely (7.9, 2% unsafe), while the local shopping district scored slightly lower (7.6, 4% unsafe). Notably, perceptions of safety declined significantly in public areas at night, with a rating of 6.5 and 14% of respondents indicating they felt unsafe.

When benchmarked against metropolitan and inner eastern region councils, Port Phillip's safety ratings were consistently lower, particularly at night—8% below the metropolitan average and 10% below the inner eastern region average. These findings are reflected in the proportion of respondents who identified safety, policing, and crime (21%) as key concerns, alongside issues such as homelessness (8%), activity centre management (4%), and drug and alcohol-related concerns (4%).

Qualitative feedback further highlighted the reasons behind these perceptions. The most frequently cited concerns included drug and alcohol use (43 comments), discomfort around behaviour making people feel unsafe or uncomfortable (39), perceived lack of policing and general crime concerns (32), and direct experiences with crime and break-ins (30). These insights underscore the importance of targeted strategies to enhance public safety and address the underlying social factors contributing to community unease.

Community sentiment and safety

Recent community engagement highlights a strong sense of belonging and pride among Port Phillip residents. Respondents reported high levels of agreement that the City is welcoming, vibrant, and inclusive, with average scores ranging from 7.1 to 8.1 out of 10 across key indicators of community connection. Notably, only 1% of respondents disagreed that Port Phillip is a welcoming place for people from diverse backgrounds, and 8 out of 10 felt proud and connected to their neighbourhood.

Despite these positive sentiments, safety remains a key concern. Issues such as crime, policing, homelessness, and drug and alcohol use were identified by residents as significant challenges. Perceptions of safety in public spaces—particularly at night and around activity centres—were consistently lower than the metropolitan average. These concerns align with the top safety priorities identified in Victoria Police’s 2024 Community Sentiment Survey, including public safety, property protection, and the impact of alcohol and other drugs.

We know that online media also plays a part in community sentiment and can have a powerful influence on how people perceive safety in their communities. The constant flow of news and social content can heighten awareness of risks, but it can also amplify fear—especially when stories are sensationalised or lack context. Concerns around online scams and the rise of Artificial Intelligence-created content have also been raised. At the same time, digital platforms offer valuable opportunities to share accurate information, highlight positive initiatives, and build trust. When used thoughtfully, online media can support safer, more informed communities.

Crime statistics in City of Port Phillip

Victoria Police are responsible for responding to incidents of crime and upholding law and order. The City of Port Phillip works closely with Victoria Police and other agencies to contribute resources (such as Local Laws and City Amenity officers) and support responses to crime where appropriate.

Council monitors crime trends in our local government area. Overall, Port Phillip residents’ sense of safety and security is comparable with the Victorian average. However, Port Phillip has a persistently higher number of criminal incidents per capita than the state average. In 2025, the Crime Statistics Agency, crimestatistics.vic.gov.au, reported the criminal incident rate per 100,000 population in Port Phillip for year ending June was 10,974.4, compared with the Victorian rate of 6,814.0. The total number of recorded criminal incidents in Port Phillip was 12,590; up 21.3 per cent from 2024.

Port Phillip’s incidence of family violence (FV) is below the state average. For the year ending June 2025, the incidence of family violence per 100,000 population in Port Phillip was 1,452.2 compared with a Victorian rate of 1,499.6, however, the rate of family violence and the number of FV incidents are steadily increasing over time. It is estimated that only 25 per cent of family violence incidents are reported to the police.

As of June 2025, the top five locations with the highest incidents of crime were St Kilda, South Melbourne, Port Melbourne, Elwood, and Albert Park. Also at this time, the top five

principal offence subgroups were: stealing from a motor vehicle, other theft, criminal damage, motor vehicle theft, stealing from a retail store.

Services in the City of Port Phillip

City of Port Phillip is fortunate to have many great community service providers across our municipality, who support those most vulnerable in the City.

Community providers provide critical support to our residents through the provision of social support, social inclusion, health, housing, legal, education and training services. They are an important network of services which improve the health and wellbeing outcomes for our residents. Council also partners with local organisations and the community through the project Port Phillip Zero and Trauma Aware Port Phillip.

Port Phillip Zero aims to end rough sleeping homelessness in the City of Port Phillip by providing appropriate, secure, affordable long-term housing, and support, to all people who are living without a home. Council's Homelessness and Affordable Housing Strategy outlines Port Phillip Zero in greater detail.

Trauma Aware Port Phillip (TAPP) is a community initiated, evidence-informed project to strengthen resilience and reduce the impact of trauma and shame in the Port Phillip community. This project is coordinated through the TAPP Working Group, a network of individuals, organisations and service providers in Port Phillip who are collaborating to empower sectors and community to enhance connection and capacity, reduce trauma and shame in everyday interactions, build inclusion, and share knowledge.

Part 3 Council's role

We know that community safety requires a partnership approach. This is why we work collaboratively with our communities, support and service organisations, Victoria Police and State Government.

The safety of our community is shaped by a range of factors—including government policies, economic conditions, and broader social influences—many of which are beyond the direct control of the City of Port Phillip.

That's why we work closely with our partners—community members, government agencies, service organisations, universities, local businesses, and traders—to share responsibility, identify solutions, and pool resources. Together, we're committed to creating a safer, more connected community for everyone.

We deeply value the skills, experience, and knowledge our partners bring to this shared effort. Their contributions are essential to building a community where everyone feels safe, supported, and included.

Roles of different levels of government

Local government plays several roles in community safety including:

- activating public spaces through community grants and funding.
- activating and revitalising our high streets.
- fostering diversity, inclusion, and social connection.
- fostering strong partnerships with emergency services, local traders, and community groups.
- maintaining and upgrading public amenities and addressing identified traffic and transport issues.
- providing supports for those experiencing hardship and insecure housing.
- developing regulations to promote and maintain safety.
- physical design of public places through new works and through planning approvals.
- maintaining safer public spaces through CCTV, Local Laws, and joint patrols.

The State government is responsible for law and order, public housing, public health, transport and infrastructure, and emergency management, and leads on responses to these issues in the City.

The Federal government focuses on national matters such as Medicare and social security, defence, immigration, and foreign policy.

Community Safety

Federal	State	Local
Taxation	Police and Crime Prevention	Local infrastructure
Grants	Hospitals and health	Rates
Social security	Public transport	Referral, support, and direct outreach
Major infrastructure funding	Roads	Service coordination
Defence	Emergency management	Information provision
	Public and community housing	Funds community providers through grants and service agreements
	Major infrastructure provision	Maintenance of local amenity
	Taxation	

Table 1: responsibilities of different levels of government in relation to community safety. Note tables to be replaced with infographics

Roles of other organisations

Many organisations play a part in contributing to community safety. This includes not-for-profit and community organisations that provide health and housing support services, legal support, cultural, social, and sporting activities. Examples in Port Phillip include Launch Housing, Sacred Heart Mission, Salvation Army, Better Health Network, Southside Justice, Port Phillip Community Group, Ngwala Willumbong Aboriginal Corporation, St Kilda Gatehouse, Victorian Pride Centre, Neighbourhood Watch.

Businesses and traders are critical partners who contribute to economic and social wellbeing through provision of goods and services, engagement with shoppers and passers-by, and for their formal or informal physical presences. This includes high street traders and markets, neighbourhood stores and services.

Arts, cultural and religious institutions, sporting organisations, and schools help build community connection, improve health and wellbeing, and serve play a significant role in community safety.

Creating and maintaining a safe community is a shared responsibility. Council and community service providers must continually adapt to meet changing and increasing needs as a result of population growth, economic conditions and changing community demographics and expectations to meet community health and wellbeing needs.

Creating a safe and connected community together

Our residents and visitors play a vital role in bringing valuable insights and expertise in addressing the issues that matter most to our community.

There are many simple ways individuals can contribute to a safer environment—by respecting public spaces, disposing of waste responsibly, managing pets with care, showing courtesy to others, and reporting any criminal activity.

Residents and community groups actively work to strengthen social connections through neighbourhood contact, community gardens, volunteering, and more.

We encourage everyone who can to be proactive in strengthening community connections, speaking up or reporting issues, and looking out for each other. Together, we can foster a welcoming and secure community for all.

Communities' roles in community safety include:	Partner organisations in community safety include:	Agencies responsible for intervention and enforcement include:
<ul style="list-style-type: none"> • Being a good neighbour, such as taking the bins in or collecting mail when a household is away • Helping to keep neighbourhoods clean and tidy • Reporting of littering, graffiti, and concerns to Council or other authorities • Being welcoming 	<ul style="list-style-type: none"> • Access Health • Alfred Health • Better Health Network • First Step • Launch Housing • Ngwala Willumbong Aboriginal Corporation • Sacred Heart Mission • Salvation Army • Southside Justice • SouthPort Community Legal Service • St Kilda Gatehouse • Windana 	<ul style="list-style-type: none"> • Victoria Police • Department of Justice and Community Safety • Emergency Management Victoria (EMV) • Crime Stoppers • Victims of Crime Helpline

Table 2: Indication of community safety roles and partners. Note tables to be replaced with infographics

Part 4 Actions and Funding

These Pillars and their objectives carry equal weight in delivering on the purpose of this Plan. The Implementation Plan (Appendix 1) provides more detailed information about how these actions will be delivered).

Pillar 1: Creating safer public places

Objective: to design and maintain safe, accessible, welcoming, and climate resilient public spaces.

The 'alignment' column shows how these actions align with the Roundtable recommendations or other Council documents.

#	Actions that relate to creating safer public places	Alignment
What stays the same		
1.1	Deliver a renewal program for public place CCTV to ensure the system functions appropriately and is well maintained.	Community Safety Roundtable 27; Plan for Port Phillip
1.2	Ensure the positive look and feel of public spaces through ongoing cleansing, graffiti removal, amenity patrols and maintenance of lighting and signage.	Plan for Port Phillip
1.3	Promote, deliver, and continuously improve City of Port Phillip's syringe waste management service to ensure the appropriate and rapid disposal of syringes.	Plan for Port Phillip
1.4	Maintain and manage the public space CCTV network in line with Council's Public Place CCTV Policy and work with Victoria Police to maximise community safety benefits.	Public Place CCTV Policy
What we're improving		
1.5	Confirm adequacy of current Local Law, emphasising the need for effective implementation and coordination rather than legislative change.	Community Safety Roundtable 6; Plan for Port Phillip
1.6	Maintain and enhance existing partnership agreements and protocols among CoPP, Victoria Police, and key service providers around community health.	Community Safety Roundtable 12; Plan for Port Phillip,
1.7	Urgently review and modify problematic public spaces applying Crime Prevention Through Environmental Design (CPTED) principles.	Community Safety Roundtable 24; Plan for Port Phillip
1.8	Elevate consideration of CPTED principles in planning decisions for key developments within CoPP and mandate their use for Council capital design projects.	Community Safety Roundtable 26
1.9	Identify partnerships with utilities and transport providers to improve graffiti removal services.	Plan for Port Phillip Graffiti Management Strategy

#	Actions that relate to creating safer public places	Alignment
1.10	Continue to invest in and publicise the work of the Trauma Aware Port Phillip group with a view to expanding its reach and impact.	Community Safety Roundtable 29
1.11	Continue to improve public places by undertaking safety audits, reviewing and applying place-based and prosocial responses including consideration of nighttime experiences and environment.	Public Space Strategy
1.12	Review current processes and establish clear procedures enabling rapid infrastructure interventions in public spaces to improve safety.	Community Safety Roundtable 25
	What is new	
1.13	Develop and pilot a welfare-based model of partnered patrols and/or outreach with Victoria Police, CoPP Local Laws, outreach workers, peer supports and other services to engage with and support people with complex needs.	Community Safety Roundtable 3
1.14	Work with traders, business community and government agencies to address identified street infrastructure concerns that affect positive precinct activation.	Creative and Prosperous City Strategy
1.15	Explore alternative designs and approaches beyond minimum standards in response to identified needs when appropriate to support accessibility and safety.	Public Space Strategy Accessibility Action Plan
1.16	Work with major developers in key precincts to minimise disruptions and improve activation of high streets during design and construction phases.	Great Places and Precincts
1.17	Work with Federal government on new public place CCTV opportunities as part of the \$1.5 million 2025 election commitment.	Public Place CCTV Policy
1.18	Advocate for an increase in resources by Victoria Police to the Neighbourhood Policing model in the Port Phillip Police Service Area with an increase in foot patrols, local engagement and problem solving, particularly in identified community safety 'hotspots'.	Community Safety Roundtable 1
1.19	Advocate for an ACLO role specific to the Port Phillip Police Service Area.	Community Safety Roundtable 2
1.20	Undertake a review of lighting infrastructure in identified priority areas across the municipality to improve safety and visibility in public spaces.	Public Space Strategy
1.21	Work with relevant agencies to develop a formal protocol partnership agreement between Victoria Police and CoPP for an effective, coordinated response to street-based concerns.	Community Safety Roundtable 4
1.22	Ensure CoPP and Victoria Police protocols guiding the frontline role of Victoria Police engaged in homelessness response emphasise rapid social and therapeutic intervention (problem solving) as the primary goal, with enforcement actions being secondary, or a last resort.	Community Safety Roundtable 7

Pillar 2: Improving communication and information

Objective: Improve communication and deliver programs which support a better-informed and engaged community

The 'alignment' column shows how these actions align with the Roundtable recommendations or other Council documents.

#	Actions that relate to improving communication and information	Alignment
	What stays the same	
2.1	Participation in Community Safety month and other state, federal and global community safety campaigns and events.	
2.2	Monitor crime statistics, community satisfaction survey and customer requests to Council to identify priorities and emerging trends and concerns.	Plan for Port Phillip
	What we're improving	
2.3	Establish regular channels for community conversation to inform proactive approaches to community safety.	
2.4	Support harm reduction campaigns and improve wellbeing in the City of Port Phillip through service communications.	Homelessness and Affordable Housing Strategy
2.5	Support community-led, active citizenship programs such as Neighbourhood Watch.	
2.6	Work with Police, community and other partners to promote campaigns and strategies around personal and property safety (i.e. including Coffee with a Cop).	
	What is new	
2.7	Develop communication tools in easy English to address community safety concerns for traders and business community around resources, services and responses, including 24-hour contacts.	
2.8	Use languages other than English for Council programs to indicate safe and welcoming spaces for culturally diverse individuals and groups.	Draft Multicultural Strategy
2.9	Build awareness to address misinformation and disinformation in public conversations (including online safety and cyber safety).	
2.10	Address needs of young people around community safety, such as online safety and safety in public places, and co-design community safety programs.	
2.11	Evaluate communication and service needs for cohorts such as visitors, tourists and short-term renters and provide resources in easy English for accessibility.	

Pillar 3: Strengthening social cohesion and connecting communities

Objective: to empower and support communities to thrive, collaborate and connect.

The 'alignment' column shows how these actions align with the Roundtable recommendations or other Council documents.

#	Actions that relate to strengthening social cohesion and connecting communities	Alignment
	What stays the same	
3.1	Continue to support and adequately fund service providers demonstrating effectiveness, particularly those working with high-impact cohorts (individuals leaving prison, mental health, or rehabilitation facilities).	Community Safety Roundtable 13
3.2	Support diverse, marginalised and vulnerable communities through co-designed and inclusive services.	
3.3	Continue to provide funding to groups and organisations that support local networks, encourage community participation and support access and inclusion.	
3.4	Work with Linking Neighbours and other seniors' programs to support participation, wellbeing, and safety in public places.	Positive Ageing Policy
	What we're improving	
3.5	Explore more coordinated approaches and partnerships to strengthen prevention and place-based responses to family violence in Port Phillip.	
3.6	Increase community connection by delivering on Council's commitment to a cultural and religious calendar of significant dates to acknowledge our diverse community.	Plan for Port Phillip.
	What is new	
3.7	Identify ways to reduce social isolation and increase social connection and cohesion.	Positive Ageing Policy
3.8	Pilot co-design and funding of a program of community-led activities.	
3.9	Lead discussions for the establishment of an ongoing alliance that will continue the work of the Community Safety Roundtable.	Community Safety Roundtable 30
3.10	Explore trader and business association-led programs for community safety activities.	
3.11	Develop responses to support people impacted by complex behaviour in public places and build community resilience.	
3.12	Develop a community recovery plan to complement crisis responses and emergency management.	

Funding approach

Council has committed budget for the next four years to support the provision of resources through staffing, service agreements, and program delivery. Council has further committed an additional budget of \$250,000⁵ over the next four years to support the delivery of community safety programs.

Proposed funding allocation is below.

	2025/26 Budget	2026/27 Projection	2027/28 Projection	2028/29 Projection
	\$000	\$000	\$000	\$000
Employee Costs (1 FTE) ⁶	154	158	163	168
Contracts, materials, and other operational expenses	46	47	48	49
Crime Prevention Through Environmental Design	100	0	0	0
Community Safety Program delivery including services funding	250	256	263	269
Additional funding from service model review	73	73		
Total operating expenses	623	534	474	486

⁵ Excluding capital funding for CCTV renewal and proposed grant funding for CCTV in additional precincts.

⁶ Community Safety Lead (excludes complementary staff in Local Laws as well as leadership).

References

State Government legislation

Victorian Crimes Act 1958: <https://www.legislation.vic.gov.au/in-force/acts/crimes-act-1958/311>

Summary Offences Act 1966: <https://www.legislation.vic.gov.au/in-force/acts/summary-offences-act-1966/131>

Mental Health and Wellbeing Act 2022: <https://www.health.vic.gov.au/mental-health-and-wellbeing-act>

Local Government Act 2020: <https://www.legislation.vic.gov.au/in-force/acts/local-government-act-2020/024>

Community Crime Prevention Victoria: <https://www.crimeprevention.vic.gov.au/crime-prevention-strategy>

Family Violence Protection Act 2008: <https://www.legislation.vic.gov.au/in-force/acts/family-violence-protection-act-2008/053>

Statistics and data

2024 Annual Victoria Police Community Sentiment Survey:
<https://engage.vic.gov.au/project/vicpol-2024/update/509>

Crime Statistics Agency Victoria <https://www.crimestatistics.vic.gov.au/>

Australian Bureau of Statistics <https://www.abs.gov.au/statistics/people>

Victorian alcohol and drug statistics: <https://aodstats.org.au/>

Victorian public health and wellbeing outcomes:
<https://www.health.vic.gov.au/victorian-public-health-and-wellbeing-outcomes-dashboard>

Literature

Lee, M and Wickes, R., et al., 2020. Social Cohesion and Pro-Social Responses to Perceptions of Crime: Victorian Report <https://doi.org/10.25910/5e65ab40054f5>

Mapping Social Cohesion 2024 Report: <https://scanloninstitute.org.au/wp-content/uploads/Mapping-Social-Cohesion-2024-Report.pdf>

XYX Lab – Gender + Place – Art, Design and Architecture:
<https://www.monash.edu/mada/xyx-lab>

YourGround: <https://www.yourground.org/>

Fact sheet: Designing better lighting – Community Crime Prevention Victoria:
<https://www.crimeprevention.vic.gov.au/resources/urban-design-and-crime/fact-sheet-designing-better-lighting>

