



BELIEVE IN YOUR SUSTAINABILITY

annual progress report
2014/15

toward zero

Toward Zero is the City of Port Phillip's sustainable environment strategy to 2020.

Toward Zero has nine challenges covering:

- Greenhouse gas emissions
- Potable water use
- Waste
- Contamination and pollution
- Sustainable transport
- Sustainable urban design and development
- Net loss of natural heritage
- Sustainable purchasing and procurement
- Climate change

Each challenge has targets to achieve the Toward Zero strategy by 2020.

The Annual Report communicates Council's progress on these targets. It also provides an overview of possible pathways to achieve these targets by 2020.



Major milestones in 2014/15



September
2014

City of Port Phillip and four partner councils won the Premier's Sustainability Award for the 'Seedlings' program that integrated sustainability into the early childhood sector.

October
2014

Upgraded the Balaclava Railway Station to improve accessibility for people with disabilities.

February
2015

Launched the My Climate tool to improve sustainability in homes.

May
2015

Launched the Built Environment Sustainability Scorecard (BESS) to improve sustainability in planning.

May
2015

Made improvements to traffic signals in six intersections to improve safety for pedestrians.

May
2015

Reduced the speed limit in five new areas from 50 km/h to 40 km/h.

June
2015

Installed 3,433 new energy efficient streetlights as part of the Streetlight Upgrade project.

June
2015

Upgraded truck wash bay at the South Melbourne Depot, reducing water consumption by 30 per cent.

June
2015

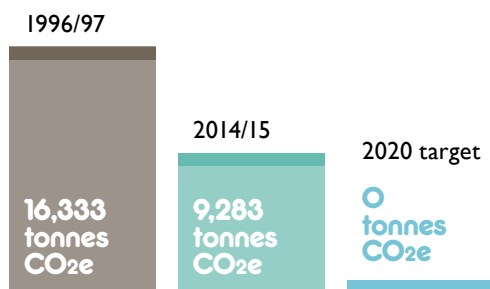
Council's My Climate tool won the Sustainability category of the iAwards, which recognises excellence in information and communications technology.

June
2015

Installed five new raingardens.

greenhouse gas emissions

The City of Port Phillip is committed to achieving and sustaining zero net greenhouse gas emissions from Council operations and services by 2020.



Notes on data

Council's 2014/15 net greenhouse gas emissions were 9,283 tonnes carbon dioxide equivalent (tCO_{2e}), a 4.6 per cent reduction on last year's emissions level. This represents a 43.2 per cent reduction on baseline emissions. Emissions are attributed to electricity use in streetlights (42 per cent), gas and electricity use in council buildings (50 per cent), vehicle use (7 per cent), and waste (1 per cent).

Council's actions in the past year to reduce emissions

- The streetlight upgrade program reduced emissions by 12 per cent.
- A 600 LED lighting retrofit reduced emissions at St Kilda Library by 15 per cent.
- A project engineer, funded from the Environmental Retrofit Program, advised staff and guided initiatives to reduce emissions across council buildings.
- A solar photovoltaic system for the St Kilda Town Hall was designed.

How are we going to reach the 2020 target?

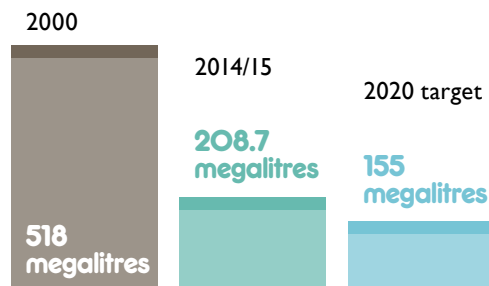
- 1.4 MW of solar energy will be installed on Council buildings.
- Electricity supply will be contracted from utility-scale renewable energy facilities.
- Energy efficiency of council buildings and public lighting will be improved by implementing the Public Space Lighting Renewal Program and implementing minimum performance standards.

Further information

- Greenhouse Plan - Low Carbon City (2011)

potable water use

The City of Port Phillip is committed to minimising water use to achieve and sustain a 70 per cent reduction in Council's potable water use by 2020 (based on 2000 levels of water use).



Notes on data

Water consumption has remained steady over the past three years. This is a good result, given that rainfall in 2014/15 was approximately 180 mm lower than the long-term average of 650 mm. A reduction of six megalitres (ML) across parks and sporting assets was offset by increases in community facilities and council buildings. Currently, open space irrigation levels are insufficient to maintain the health and amenity of all priority open space assets. In 2015/16 Council will commence irrigating priority sites with an additional 18.5 ML. Current levels of water use will be maintained until alternative water sources become available by 2020.

Council's actions in the past year to reduce potable water use

- Council reviewed optimal irrigation rates across the parks and open space asset portfolio.
- A stormwater harvesting strategic review was undertaken to help develop a long-term stormwater harvesting plan for the City.
- Real-time sub-metering of key open space assets was implemented.
- The truck wash bay at the waste depot was upgraded to double capacity and to decrease cleaning times. \$50,544 will be saved in labour and equipment and water consumption will be reduced by 30 per cent, saving 24,570 litres each year.

How are we going to reach the 2020 target?

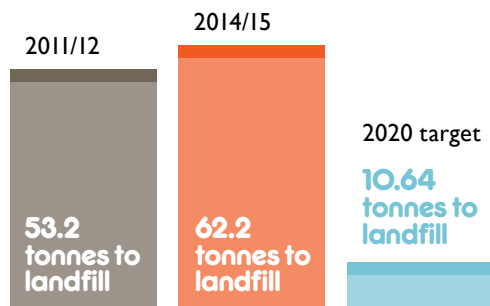
- From 2015/16 we will realise the full benefits of the Elwood / Elsternwick Stormwater Harvesting Scheme (up to 30 ML saving available in 2016/17).
- Development and implementation of a stormwater harvesting plan for Council to 2020.
- Implementing a leak detection program for open space and a facilities water management plan.

Further information

- Water Plan - Toward a Water Sensitive City (2010)
- Foreshore and Hinterland Vegetation Management Plan

waste

The City of Port Phillip is committed to minimising Council's waste to achieve and sustain an 80 per cent reduction in Council's waste to landfill by 2020 (based on 1999 levels).



Notes on data

The baseline year in the Toward Zero strategy was set as 1999; however data was not available that year. Therefore, the baseline year has been amended to 2011/12 for which data was available.

The figure for waste has increased in 2014/15 because we are now reporting on a larger number of Council buildings.

Council's actions in the past year to reduce waste

- 928 kg of materials have been collected for recycling at the St Kilda Town Hall by the staff Green Team since September 2014 including batteries, polystyrene, electrical equipment, metals, paper, soft plastics and organic waste.
- The Victorian Government's Waste and Resource Recovery Infrastructure Plan was released in June 2015. Council is reviewing its Waste and Resource Recovery Strategy in line with this plan.
- New mattress recycling drop-off service was opened (see case study).

How are we going to reach the 2020 target?

- Council will develop a new Waste Management Strategy and targets to further minimise Council's waste to landfill.

Further information

- Waste Management and Resource Recovery Plan

contamination and pollution

The City of Port Phillip is committed to maintaining and increasing the health and quality of its natural assets.

Council reduces contamination and pollution by capturing stormwater pollutants through the installation of water sensitive urban design systems such as raingardens and stormwater harvesting. Stormwater pollutants are naturally filtered through plants in these systems and in the case of stormwater harvesting, water is redistributed for the irrigation of open spaces. Key pollutants removed include total suspended solids (including sediment and grit), nitrogen, pathogens and phosphorous.

Council's actions in the past year to reduce contamination and pollution

- Water quality improvement activities in 2014/15 enabled the capture of a further 24.5 tonnes of Total Suspended Solids (TSS) before they entered Port Phillip Bay, taking our total capability to 35.2 tonnes of TSS per year. This was achieved primarily through the delivery of five raingardens across the municipality at Canterbury Avenue (Albert Park), Nimmo Street (Middle Park), Mountain Street (South Melbourne) and Evans Street (Port Melbourne), two innovative infiltration systems at Point Ormond and the full commissioning of the Elwood / Elsternwick Stormwater Harvesting Scheme.

How are we going to reach the 2020 target?

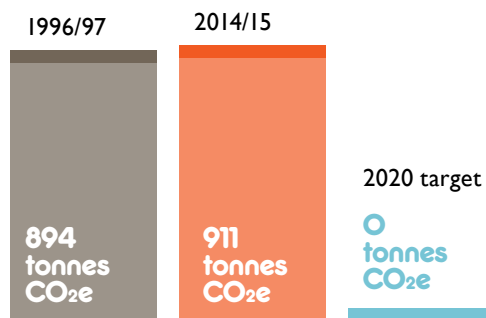
- Implement Council's water sensitive urban design program, which will assist Council to identify a delivery pathway over the next five years.
- Develop and implement a Stormwater Harvesting Plan for Council to 2020.

Further information

- Water Plan - Toward a Water Sensitive City (2010)

sustainable transport

The City of Port Phillip is committed to ensuring that it achieves a low-emissions or no-emissions fleet and standards of Council practice by 2020.



Notes on data

This year's figure (911 tCO₂e) represents a 74 per cent increase in emissions on 2013/14 levels from Council's fleet. Increased emissions are attributable to the addition of street, beach and drain cleaning services into Council's fleet inventory.

Council's actions in the past year to reduce emissions from the fleet

- Council has introduced the first e-bike to its bike fleet.
- Results from the annual staff travel survey showed a six per cent decrease in staff driving to work.

How are we going to reach the 2020 target?

- Develop and implement a Green Fleet Action Plan, including enhanced staff mobility actions and administrative controls to reduce emissions. This plan will allow Council to achieve the 2020 target.
- Offset vehicle emissions to deliver a zero emission vehicle fleet.

Further information

- Sustainable Transport Strategy (2011)

sustainable urban design and development

The City of Port Phillip is committed to ensuring that all council buildings and facilities minimise their environmental impact and maintain measurable environmental performance standards.

Council's actions in the past year to improve sustainable urban design and development

- Incorporated environmentally sustainable design into the new St Kilda Life Saving Club clubhouse, by benchmarking the design against a 5 Star Green Star standard.
- Implemented sustainable design features such as high efficiency heating and cooling, double glazing and water-efficient fixtures in the Fishermens Bend community centre upgrade.
- Included sustainable design features such as rainwater tanks in the Alma Park pavilion project.

How are we going to reach the 2020 target?

- Council will continue to strongly advocate for inclusion of sustainable design criteria for new building projects.

Further information

- Sustainable Design Policy and Strategy (2013)

net loss of natural heritage

The City of Port Phillip is committed to maintaining and enhancing its natural heritage values, significant sites, and regional biodiversity and habitats.

Council's actions in the past year to maintain and enhance its natural heritage.

- Removed trees in poor health and replanted over 90 healthy trees in Alma Park, Elwood foreshore and Peanut Farm Reserve.
- Planted over 500 street trees across the municipality.
- Replaced hard and impermeable surfaces with gardens in residential streets (such as Bridge Street, Port Melbourne and Hotham Street, South Melbourne).
- Reinstated and future-proofed significant avenues. For example, Council removed 52 diseased trees in Park Street, South Melbourne and replaced them with 72 healthy, more robust varieties to maintain and enhance natural heritage.

How are we going to reach the 2020 target?

- Increase the tree canopy cover to reduce urban heat islands. Urban heat islands are caused by hard surfaces which retain radiant heat and release it slowly back into the environment, keeping overall temperatures higher.
- Increase the number of trees in streets and parks.
- Implement new greening initiatives in locations where trees are not an option.
- Develop and implement the Foreshore and Hinterland Vegetation Management Plan.

Further information

- Greening Port Phillip 2010-2015
- Foreshore and Hinterland Vegetation Management Plan

sustainable purchasing and procurement

The City of Port Phillip is committed to ensuring the sustainability of what Council purchases and procures for its operations and services, to achieve and maintain a 70 per cent reduction in the use of unsustainable products by 2020 (based on 2007 levels).

The percentage of green procurement (by total spend) has increased since 2007, from 0.04 per cent to 5.6 per cent in 2014/15. However, data collection methodology needs to be reviewed to be able to report on reduction of use of unsustainable products..

Council's actions in the past year to improve sustainable purchasing and procurement

In the absence of a Green Procurement Action Plan, no specific actions were undertaken.

How are we going to reach the 2020 target?

- A Green Procurement Action Plan will be developed in 2015/16, outlining actions required to reach the Toward Zero target by 2020.
- A review and enhancement of methodologies for green procurement tracking and reporting will be developed as part of the Action Plan.
- A whole of organisation awareness and training program will be developed as part of the Action Plan

climate change

The City of Port Phillip is committed to preventing further climate change and actively reducing regional greenhouse gas emissions.

Council's actions in the past year to adapt to climate change

- Thermal mapping of the municipality has identified hot spots where green infrastructure can be prioritised in order to cool the surrounding area and create a refuge from the heat.
- Council is involved in the Association of Bayside Municipalities, which is developing the 'Bay Blueprint' to create a consistent, bay-wide approach to responding to coastal adaptation.

How are we going to reach the 2020 target?

- Council will continue collaborating with the Victorian Government, other councils and researchers to identify adaptation pathways to protect coastal infrastructure, our parks and our buildings.
- Council will also ensure we adapt our assets to be resilient to the impacts of climate change and work to reduce the impact of urban heat islands.

Further information

- Climate Adaptation Plan - Climate Adept City (2010)

community challenges

greenhouse gas emissions and water

- Council is unable to access reliable, up-to-date emissions data from the Victorian Government, electricity retailers or water distributors to report on progress for community emissions and water use.

contamination and pollution

- Sixty-one residents recently benefited from Council's free downpipe diversion installation offer. The downpipe diverters, donated by Melbourne Water, are used to capture rainwater from roofs which is then diverted from drains to water gardens. These contribute to Toward Zero targets by reducing the level of stormwater pollutants entering Port Phillip Bay, and reducing the use of mains water for garden maintenance.
- Further initiatives that contribute to maintaining the health and quality of our natural assets are included under the "Contamination and Pollution" challenge.

waste

- This year, Council diverted 39.85 per cent of household waste from landfill.
- Since 2007, the tonnage of recyclable materials collected from the Resource Recovery Centre has increased by 58 per cent.
- Household waste to landfill since 2007 has increased by seven per cent. Ongoing education in the community is needed, as a June audit of household bins showed 18.5 per cent of recyclable materials are going to landfill unnecessarily.

net loss of natural heritage

- 25,000 indigenous plants were planted by members of the community and Council.
- Council continues its partnership with the St Kilda Indigenous Nursery Cooperative (SKINC) to encourage residents to plant local indigenous species.
- Council is reviewing the tree canopy to identify areas requiring increased coverage.

sustainable transport

- Council has significantly increased infrastructure and the types of travel that encourage community use of low emissions vehicles.
- 4.5 kilometres of on-road bike lanes have been installed this year, along with 44 new bike hoops.
- Eight new on-street car share bays have been approved by Council, to encourage shared resources and reduce the need for car ownership.
- Traffic signals have been improved at six intersections to increase crossing times and make conditions safer for walkers. Three additional intersections have been made safer with kerb extensions and new zebra crossings.
- The Balaclava Railway Station has been upgraded to improve accessibility for all.

sustainable urban design and development

- Council will continue to ensure the percentage of planning applications that comply with sustainable design requirements increases annually through Council's SDAPP program. See the case study on The Built Environment Sustainability Scorecard (BESS).
- Council will continue to advocate to the Victorian Government for approval of the proposed Environmentally Efficient Design Local Planning policy, which would require sustainable design features in all but very minor developments.

climate change

- Council provides free energy audits for residents and businesses to evaluate ways they can reduce electricity and water use in their homes and reduce waste creation. Thirty-eight audits were performed last year.
- Council leads the Sustainability Community Action Network, which stimulates community ideas for tackling climate change. Ninety people attended network events in the past year.
- Council's sustainability website, EnviroEhub was redeveloped with a greater focus on communicating what Council is doing to improve sustainability, and share sustainable community actions. Since the relaunch of this website, visitors to the EnviroEhub website have increased by 88 per cent compared with the same six month period in 2014, showing greater community interest and involvement in sustainability.

case studies

Balaclava Railway Station upgraded to improve accessibility

In October 2014, Balaclava Railway Station was upgraded with accessible ramps, a new waiting area, more Myki readers, new customer amenities and a customer service office.

Council worked closely with the Victorian Government to advocate for and deliver the project. Council also delivered an upgrade to the Balaclava Walk laneway to improve connections to the station and add new urban art in the precinct.



Recycling mattresses to reduce waste going to landfill

A new mattress recycling drop-off service opened at the South Melbourne Depot in June. Council currently processes 4,800 mattresses per year. This new service will help reduce the total waste going to landfill and increase recycled materials. The mattresses are recycled by Geelong Disabled People's Industries, a not-for-profit organisation that offers long-term supported employment to people with a disability.



New My Climate tool helps improve our homes

Council's My Climate tool won the sustainability category of the iAwards in June, which recognises information and communications technology excellence that meets the current and ongoing community, social and environmental needs of Australians. The My Climate tool was developed by Council and CSIRO to help residents understand what size solar power system suits their home; how insulation can help their home comfort; and how much rainwater their roof can capture. The My Climate tool is available to the community through Council's EnviroEhub website.



BESS - The new online sustainable design assessment tool

A free online tool that measures the sustainability of a proposed development was introduced in May. The Built Environment Sustainability Scorecard (BESS) generates a report to attach to planning permit applications to help increase the percentage of buildings and facilities in the municipality that incorporate sustainable design principles. Currently, approximately 78 per cent of eligible planning applications include a sustainable design assessment. BESS has been designed to facilitate and improve this process for applicants.



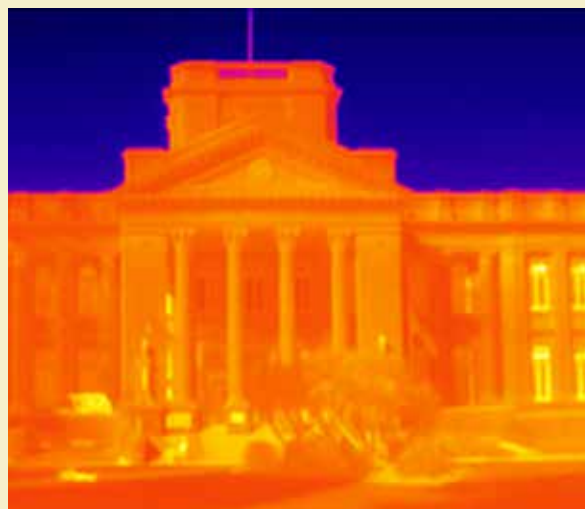
Real-time water sub-metering detected leaks at South Melbourne Market

Council has undertaken real-time sub-metering of South Melbourne Market (Council's largest water using building) and a range of sports fields across the municipality. Access to real-time data enables Council to detect leaks and operate with a greater level of sophistication in water management. In the past 12 months this has resulted in a two megalitre saving in water consumption at the South Melbourne Market.



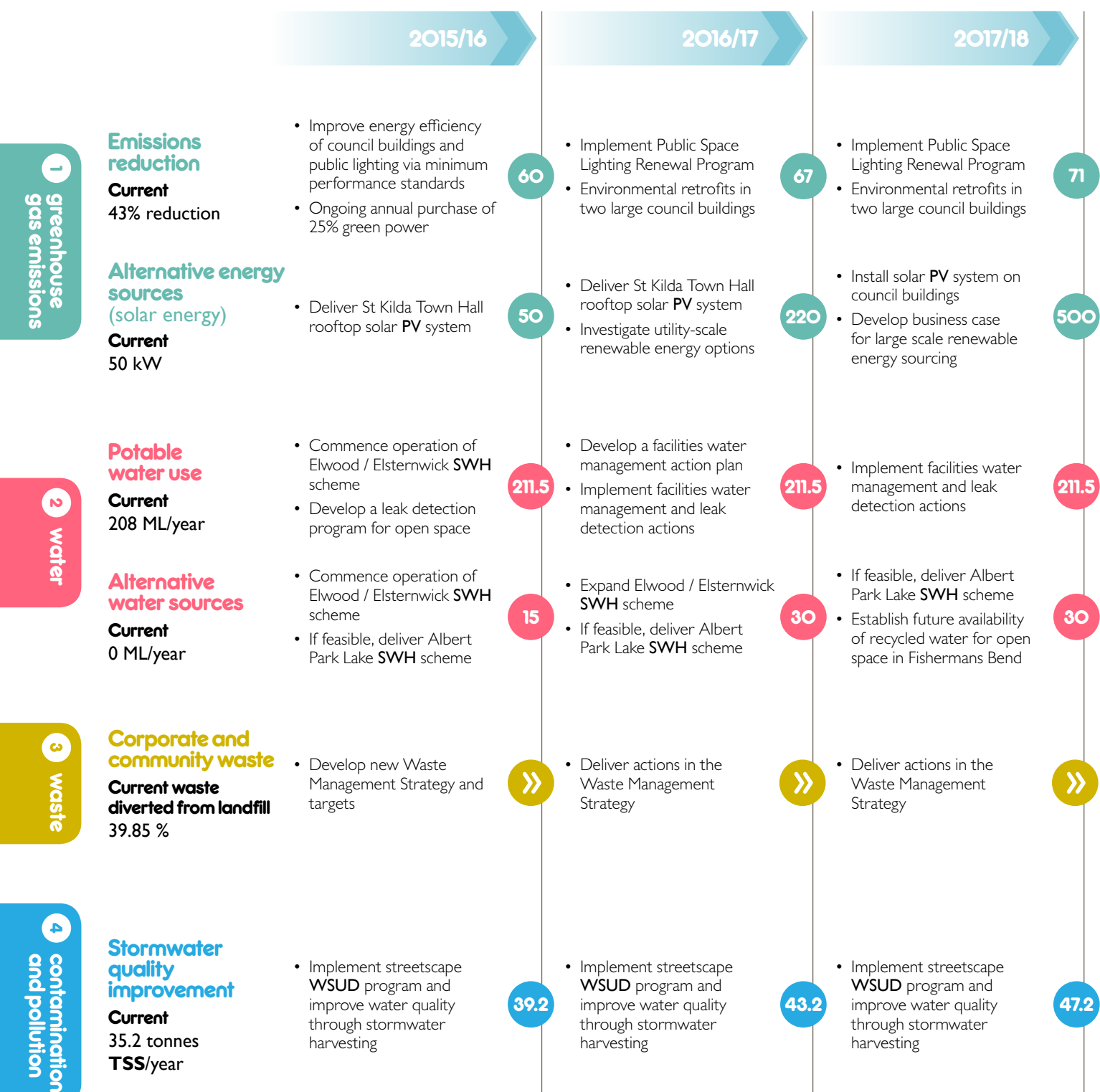
Greenhouse gas emissions reduced at St Kilda Town Hall

Efficiency improvements at St Kilda Town Hall reduced greenhouse gas emissions by 545 tCO_{2e}, a 27 per cent reduction since 2012/13. Measures that helped save 400,000 kilowatt hours (kWh) of electricity and 85,000 megajoules (MJ) of gas included: sub-metering, lighting retrofits, controlled lighting, optimising equipment operating hours, tuning the heating, ventilation and air conditioning (HVAC) equipment, increased insulation, and temperature control. Positive practices by the staff Green Team added to greenhouse gas emissions savings.

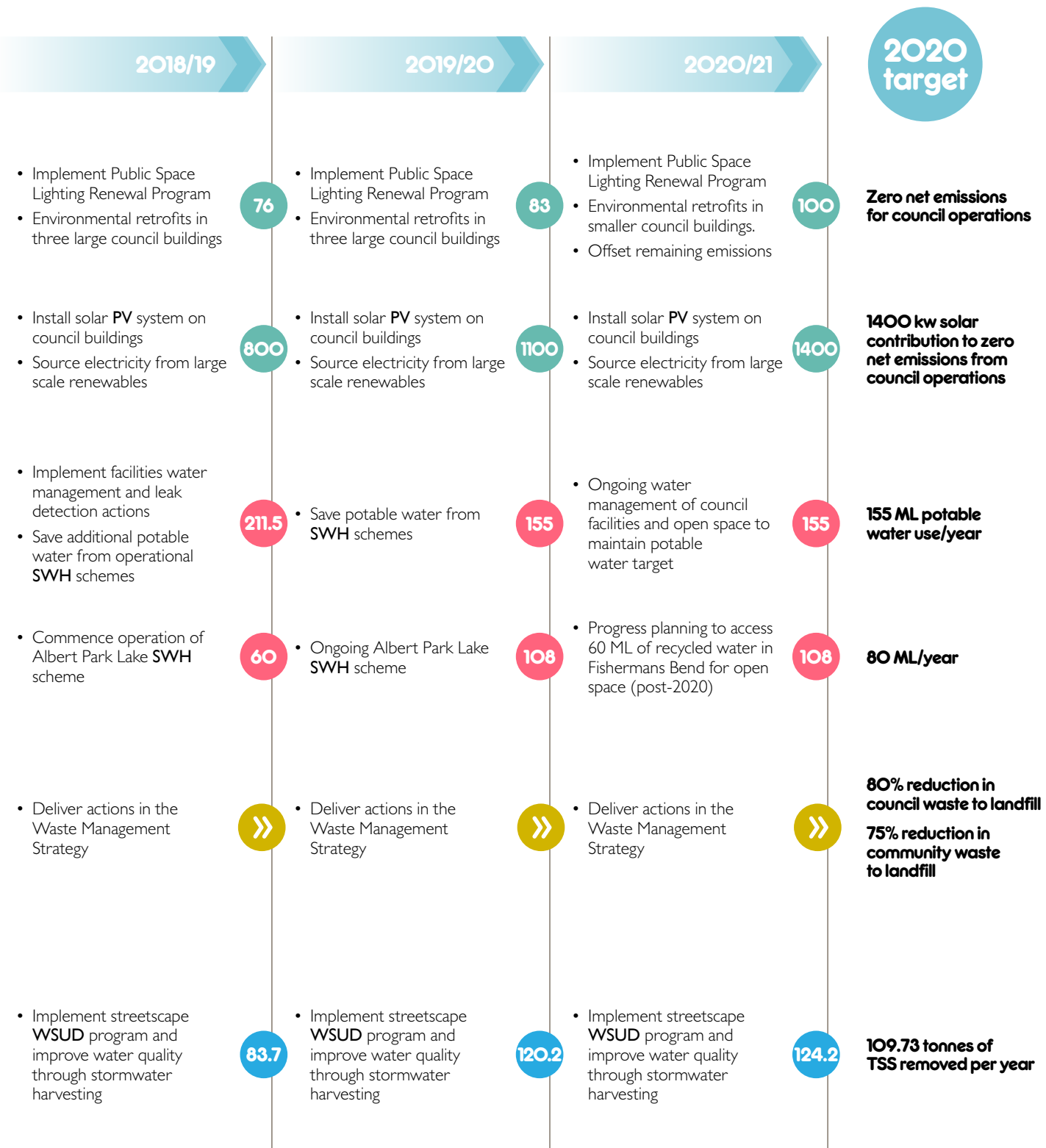


Pathways to 2020

These pathways provide an overview of the possible major actions that Council could implement between now and 2020 to deliver on Toward Zero targets. Each pathway outlines the likely annual target trajectories arising from these actions. All actions are subject to funding approval through the annual budgeting process and rely on ongoing investment and partnerships with external stakeholders.



Please see page 14 for descriptions of abbreviations.

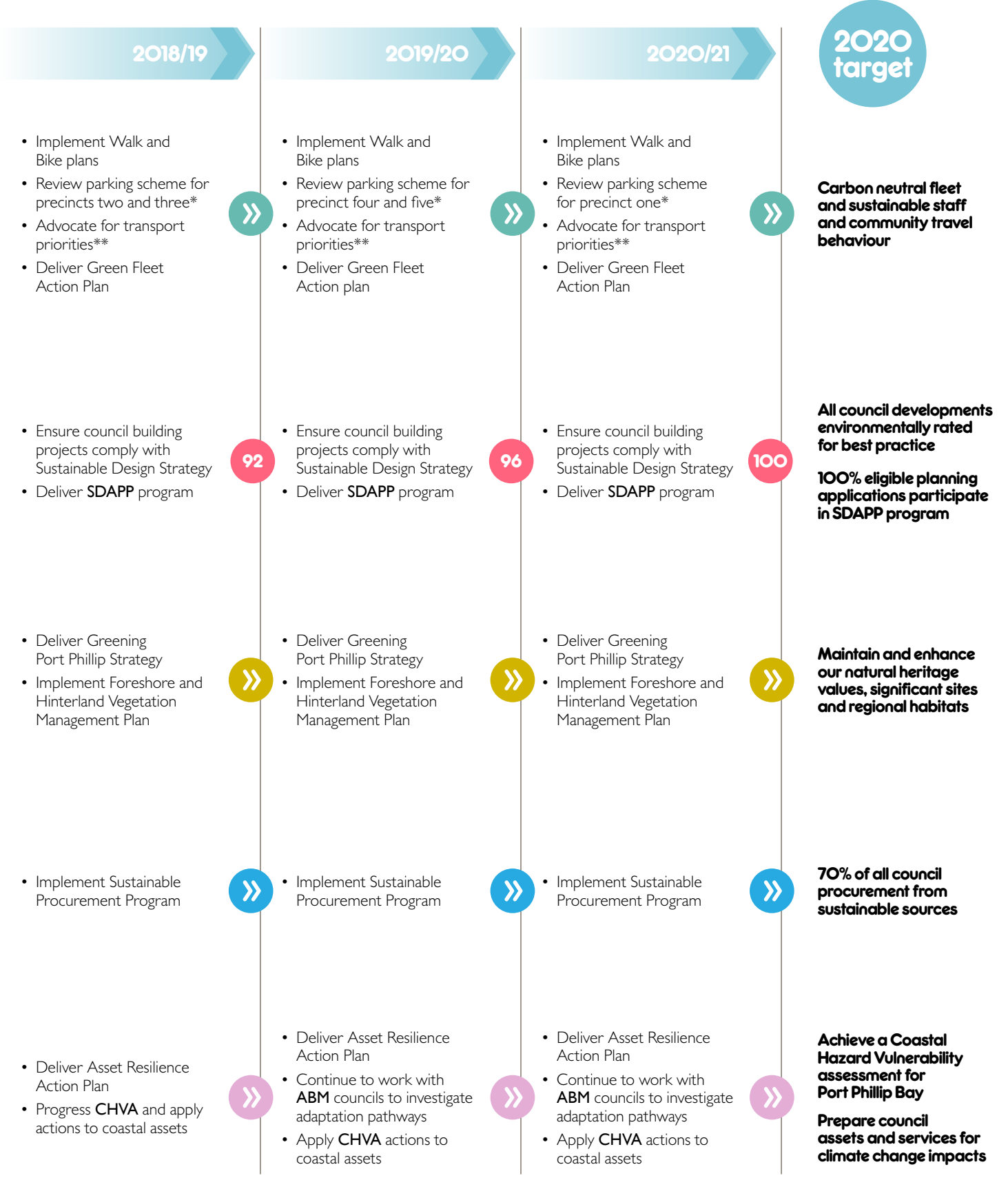


Pathways to 2020

	2015/16	2016/17	2017/18
5 sustainable transport Mode shift to sustainable transport Current Council fleet emissions: 911 tonnes CO ₂ e	<ul style="list-style-type: none"> Implement infrastructure outlined in the Walk and Bike plans Implement strategic parking schemes for precincts two and three* Advocate for transport priorities** Develop Green Fleet Action Plan 	<ul style="list-style-type: none"> Implement Walk and Bike plans Implement strategic parking scheme for precincts four and five* Advocate for transport priorities** Deliver Green Fleet Action Plan 	<ul style="list-style-type: none"> Implement Walk and Bike plans Review parking scheme for precinct one* Advocate for transport priorities** Deliver Green Fleet Action Plan
6 urban design and development SDAPP participation Current 78% eligible planning applications participating in SDAPP	<ul style="list-style-type: none"> Ensure council building projects comply with Sustainable Design Strategy Increase the percentage of eligible planning applications participating in SDAPP program Advocate for state government approval for EED planning policy 	<ul style="list-style-type: none"> Ensure council building projects comply with Sustainable Design Strategy Provide guidance on installing solar in heritage areas Deliver SDAPP program 	<ul style="list-style-type: none"> Ensure council building projects comply with Sustainable Design Strategy 100% compliance with WSUD Planning Policy (Clause 22.12) for all eligible applications Deliver SDAPP program
7 natural heritage Greening our City	<ul style="list-style-type: none"> Complete tree canopy mapping Deliver Greening Port Phillip Strategy Develop Foreshore and Hinterland Vegetation Management Plan 	<ul style="list-style-type: none"> Deliver Greening Port Phillip Strategy Implement Foreshore and Hinterland Vegetation Management Plan 	<ul style="list-style-type: none"> Deliver Greening Port Phillip Strategy Implement Foreshore and Hinterland Vegetation Management Plan
8 purchasing and procurement Council procurement Current 5.6% from sustainable sources	<ul style="list-style-type: none"> Review green purchasing processes and set annual targets 	<ul style="list-style-type: none"> Develop and implement Sustainable Procurement Program 	<ul style="list-style-type: none"> Implement Sustainable Procurement Program
9 climate change Climate adaption	<ul style="list-style-type: none"> Develop Asset Resilience Framework Develop flood adaptation pathways modelling with CRCWSC, CSIRO and other partners 	<ul style="list-style-type: none"> Deliver Asset Resilience Action Plan Develop My Climate 2.0 Complete Bay Blueprint for Port Phillip Bay with the ABM 	<ul style="list-style-type: none"> Deliver Asset Resilience Action Plan Develop heat management plan for vulnerable communities Progress CHVA for Port Phillip Bay

Descriptions

ABM: Association of Bayside Municipalities
CHVA: Coastal hazard vulnerability assessment
CRCWSC: Cooperative Research Centre for water sensitive cities
EED: Environmentally efficient design
PV: Photovoltaics
SDAPP: Sustainable design assessment in the planning process
SWH: Stormwater harvesting
TSS: Total Suspended Solids
WSUD: Water sensitive urban design



***Strategic parking scheme precincts**

One South Melbourne **Two** Port Melbourne **Three** Balaclava, Ripponlea and Elwood
Four Albert Park, Middle Park and St Kilda West **Five** St Kilda East, Windsor and Melbourne

****Transport advocacy priorities**

St Kilda Road protected bike lanes, Park Street tram link and Collins Street tram extension



For more information, please contact us via:
www.portphillip.vic.gov.au/contact_us.htm

Phone: 03 9209 6777
Fax: 03 9536 2722
SMS: 0432 005 405
email: assist@portphillip.vic.gov.au

You can also visit our website www.portphillip.vic.gov.au

Postal address: City of Port Phillip, Private Bag 3, PO St Kilda, VIC 3182



A phone solution for people who are deaf or have a hearing or speech impairment

If you are deaf or have a hearing or speech impairment, you can phone us through the National Relay Service (NRS):

- TTY users dial 133677, then ask for 03 9209 6777
- Speak & Listen users can phone 1300 555 727 then ask for 03 9209 6777

For more information visit: www.relayservice.gov.au

Please contact ASSIST on 03 9209 6777 if you require a large print version.

Language assistance

廣東話	9679 9810	Ελληνικά	9679 9811
普通話	9679 9858	Русский	9679 9813
Polska	9679 9812	Other	9679 9814

This document is printed on carbon neutral paper with recycled content using soy-based inks.

