

**City of Port Phillip  
Advertised Plan 1 of 17**

# **28 ALBERT ROAD SOUTH MELBOURNE**

## **TOWN PLANNING DOCUMENT**

Prepared for Sinclair Brook (on behalf of DCF PTY LTD) and Elenberg Fraser

Prepared by Barber Landscape Architecture  
May 2022

**Atten:**

Adam Smith  
Reade Dixon  
Priscilla Kwok

**B A R B E R**

City of Port Phillip  
Advertised Plan 2 of 17

Contents

Section	Page
01. Introduction	3
02. Principles and Considerations	4
03. The Site	5
04. Landscape Zones	6
05. Hardscape   Materials	7
06. Softscape   Planting	11

**Commercial in Confidence**  
This document has been prepared by Barber Landscape Architecture specifically for Sinclair Brook (on behalf of DCF PTY LTD) & Elenberg Fraser. The recipient/s agree not to disclose this information, with exception of specifications originally supplied by the client, to any competing design firm, agency or project management company.

# City of Port Phillip Advertised Plan 3 of 17

## 01. Introduction

Our landscape response to 28 Albert Road, South Melbourne is a unified program in close collaboration with Elenberg Fraser responding to local context and opportunities, the direction of renewal in, and prominence of, the precinct and the surrounding urban milieu. The landscape design responds equally to the performance objectives of landscape in buildings and to the specifics of the proposed architecture.

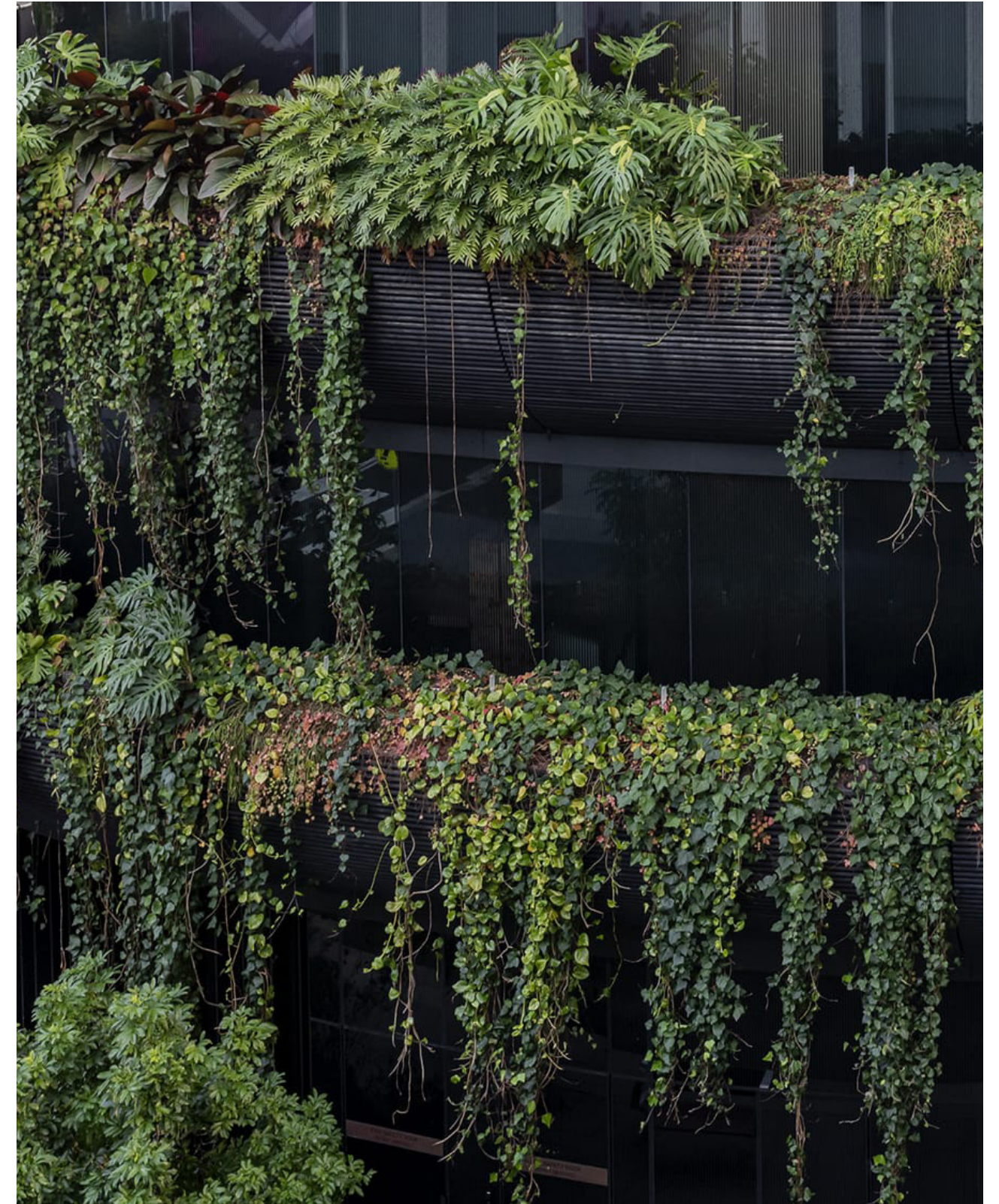
Rich yet discretely crafted moments, linked with a subtle, harmonious poetry of architecture, art, landscape, connections and functionality underpinned with the concept of restoration for both the land and people.

A human centered approach responding to the people of today and tomorrow. A design framework applying a depth of consideration of the benefits of integrated landscape mechanisms and immediately accessible green space. The performance of landscapes in the provision of health, restoration, connection and productivity.

Restoration, connections, health, vitality, productivity, sustainability and socialisation are some of the primary motivations behind our interpretation of the requirements and opportunities for the project.

Restraint, quality, craftsmanship and enduring value will be at the heart of this treatment where a balanced blend of functional purpose and a highly developed aesthetic will provide a calming yet interactive treatment.

We approach 28 Albert Road with an equal balance of “the unique creative” and well grounded pragmatism.





# City of Port Phillip Advertised Plan 4 of 17

## 02. Principles and Considerations

An iconic development seamlessly integrating a fluid landscape contribution with the architecture.

Provide a foundational connection between the user and nature - user vitality and productivity at the heart of the design.

Harmoniously blend the architectural design, art and engineering with the landscape contribution so that it serves human purpose and local context as well as facilitating sustainability.

Immediate access to extensive green space, connection to nature.

Provide a unity in design language between, and across the diverse elements.

Stimulating, flexible, well arrayed areas for informal congregation and socialising.

Stimulating, biodiverse zones, planting and moments that facilitate effortless attention.

Sustainable overlay & biophilic design principles

Environments that nurture, environments that evoke

Authentic, timeless, robust & in harmony with local context.

Foregrounding landscape's role in restoration as a foundational component of building design.

Arrival experiences and connections

Connection with nature

Flexibility and diversity of spaces, uses, materiality and planting, underpinned with a highly developed aesthetic.

Human connections and integration

Restoration - Human centered mental and physical - highlighting the restorative benefits of landscape. Down regulating the systems.

A symbolic urban way of facilitating restoration of the local landscape.

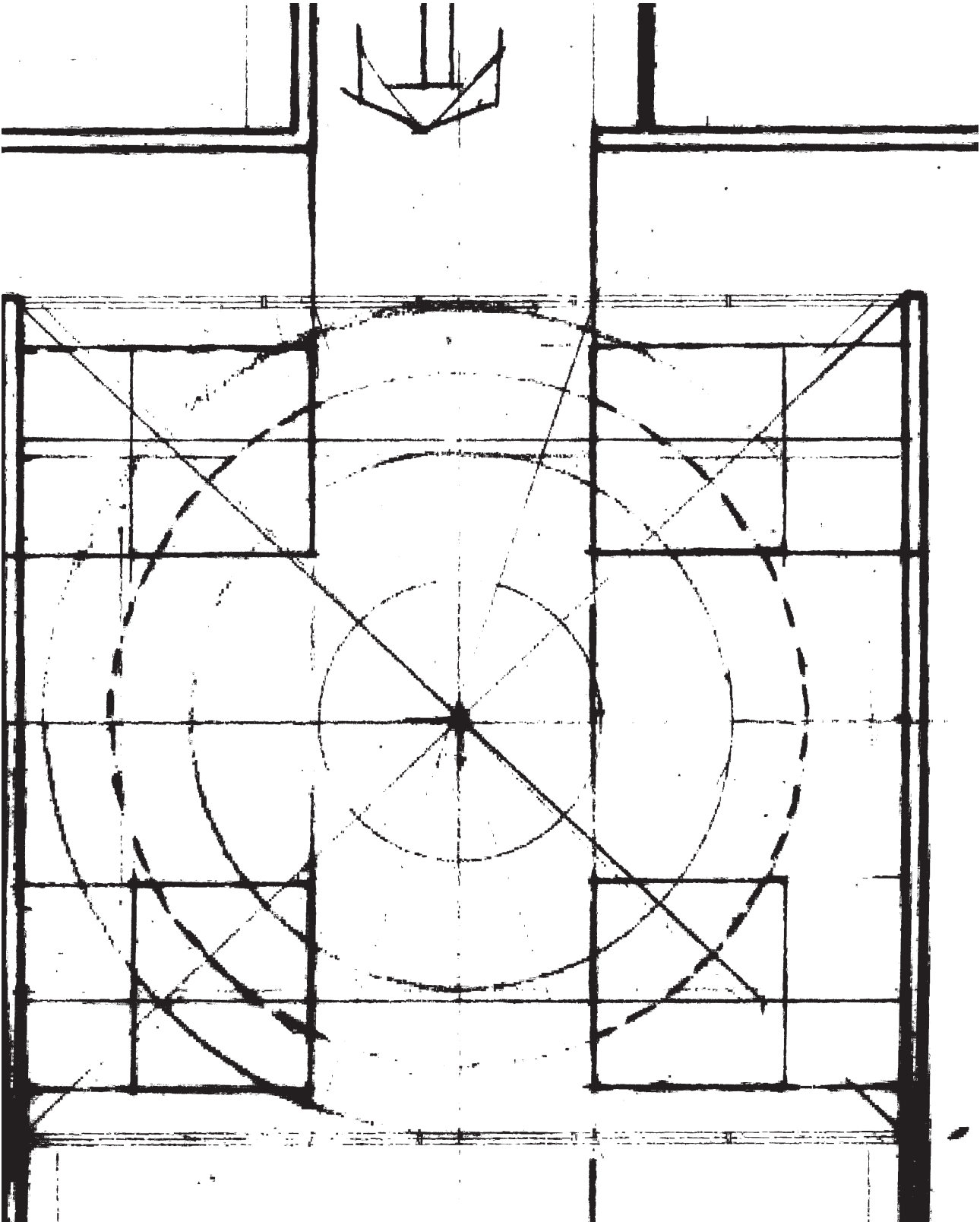
Seamless transitions between architecture and landscape.

Leadership project / contemporaries / global movement / adapted ways of living and working.

Fluid circulation

Sustainability

Sense of community





# City of Port Phillip Advertised Plan 5 of 17

## 03. The Site

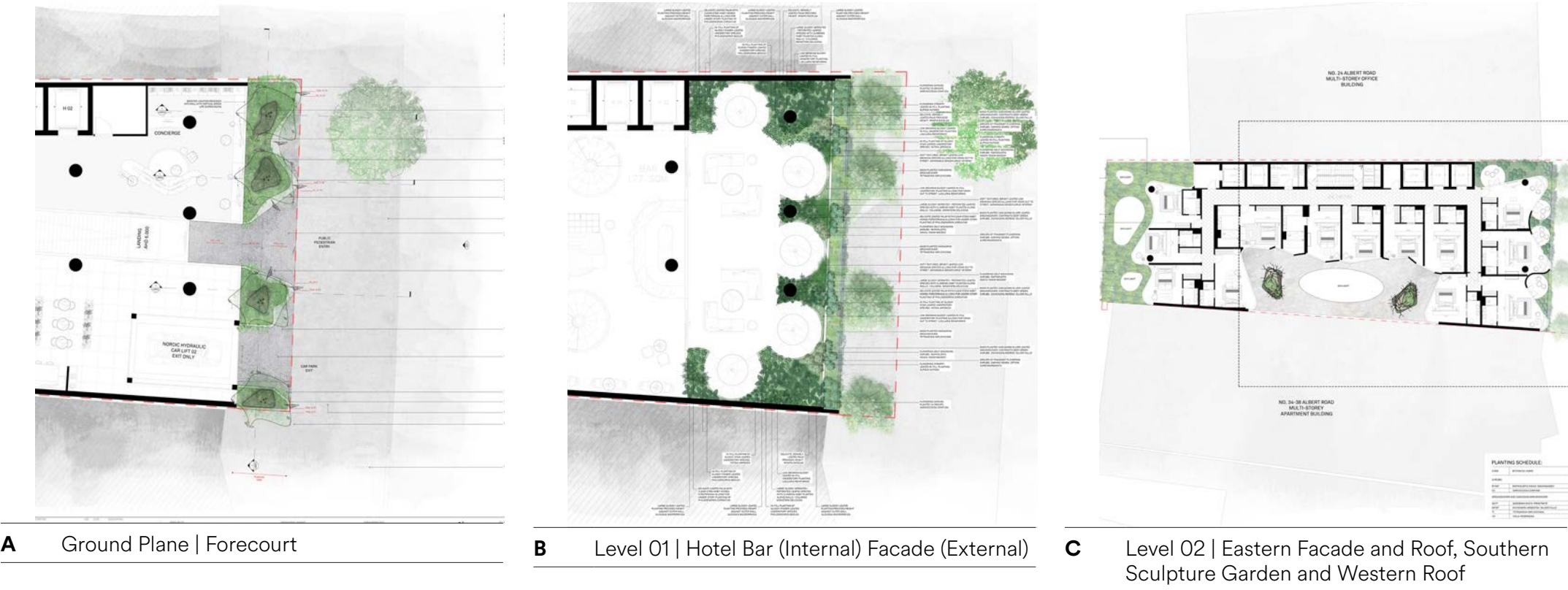
28 - 32 Albert Road, South Melbourne  
Site area: 1,009m<sup>2</sup>  
Existing 4 storey commercial building





City of Port Phillip  
Advertised Plan 6 of 17

04. Landscape Zones





# City of Port Phillip Advertised Plan 7 of 17

## 05. Hardscape | Materials

Off form concrete planters with integrated bench seating





## City of Port Phillip Advertised Plan 8 of 17

### Hardscape | Materials

Hardscape materials complement architectural finishes:

- Green terrazzo concrete matches internal finish
- Bronze planters complement powder coated mesh of car lift tilt-door

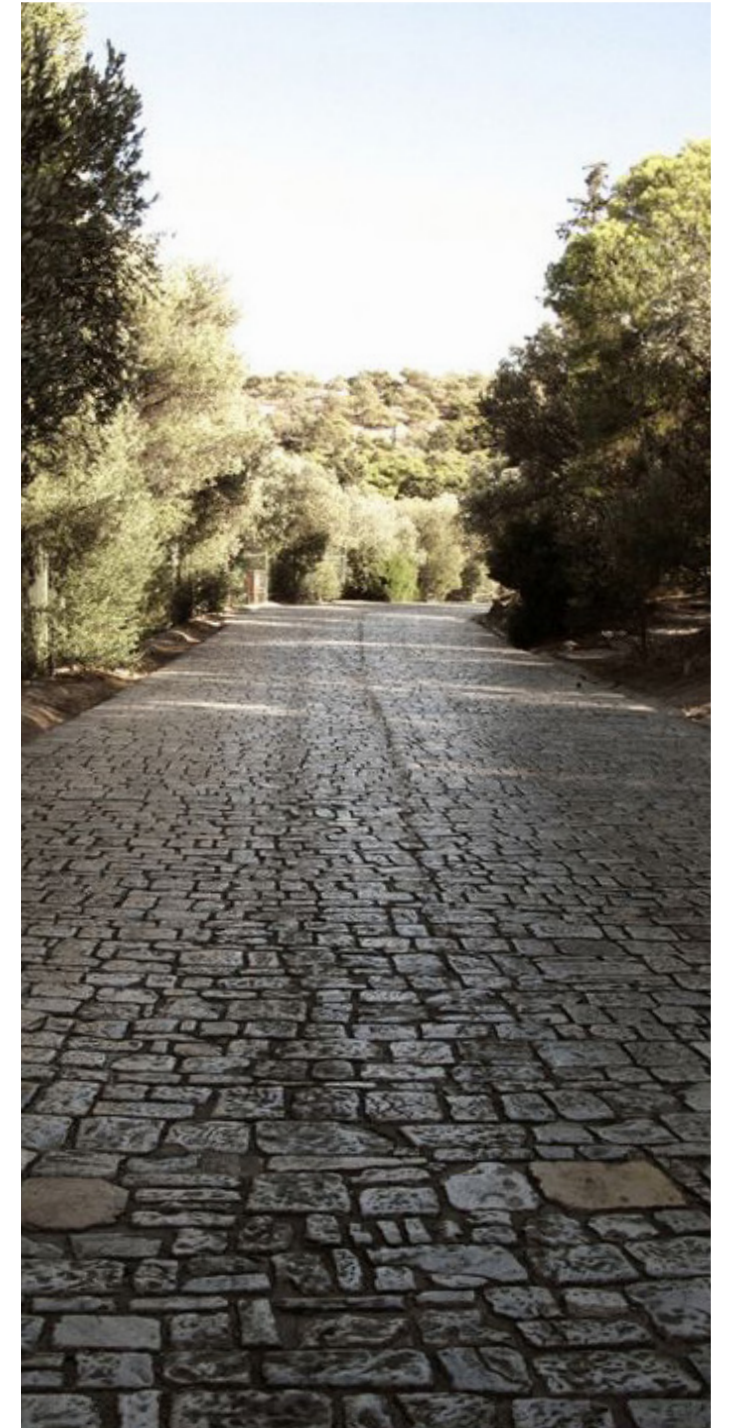




## City of Port Phillip Advertised Plan 9 of 17

### Hardscape | Materials | Paving

Textured, natural stone paving forms transitions to wider public realm.

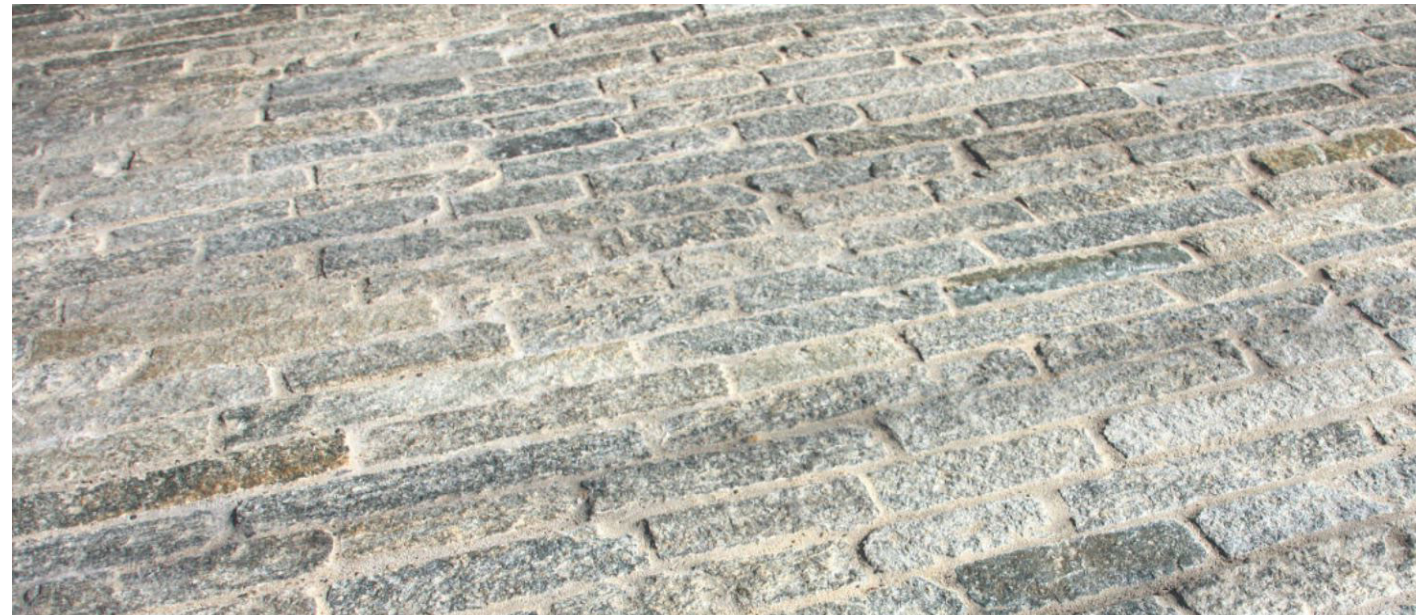




# City of Port Phillip Advertised Plan 10 of 17

## Hardscape | Materials | Paving

Textured split stone, mid-grey palette  
Buffalo Granite Filetti





## City of Port Phillip Advertised Plan 11 of 17

### 06. Softscape | Planting





City of Port Phillip  
Advertised Plan 12 of 17

Planting Palette | Ground Floor



*Lagerstroemia indica 'Natchez'*



*Parthenocissus tricuspidata*



*Dichondra argentea*  
'Silver Falls'



*Casaurina glauca*  
'Cousin It'



*Scleranthus biflorus*



# City of Port Phillip Advertised Plan 13 of 17





City of Port Phillip  
Advertised Plan 14 of 17

Planting Palette | First Floor | Internal



*Asparagus densiflorus 'Myersii'*



*Fatsia japonica*



*Howea forsteriana*



*Monstera deliciosa*



*Philodendron cordatum*



*Philodendron goeldii*



*Alpinia nutans*



*Daphne odora*



*Rhaps excelsa*



*Alocasia macrorrhiza*



*Ligularia reniformis*



City of Port Phillip  
Advertised Plan 15 of 17

Planting Palette | First Floor | External



*Sarcococca confusa*



*Dichondra argentea*  
'Silver Falls'



*Raphiolepis indica*  
'Snow Maiden'



*Tetragonia implexicoma*



City of Port Phillip  
Advertised Plan 16 of 17

Planting Palette | Second Floor



*Viola hederacea*



*Goodenia ovata* 'Prostrate'



*Sarcococca confusa*



*Dichondra argentea*  
'Silver Falls'



*Raphiolepis indica*  
'Snow Maiden'



*Tetragonia implexicoma*



# City of Port Phillip Advertised Plan 17 of 17

## Studio

1A Chatsworth Road Prahran  
Victoria Australia 3181

**T** +61 (0)417 358 357

**E** [sam@barberdesign.com.au](mailto:sam@barberdesign.com.au)

**W** [barberdesign.com.au](http://barberdesign.com.au)

**IG** [barber\\_landscape\\_architecture](https://www.instagram.com/barber_landscape_architecture)