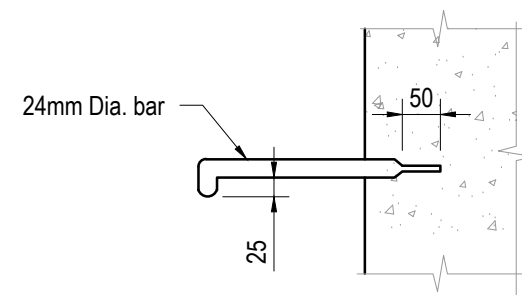
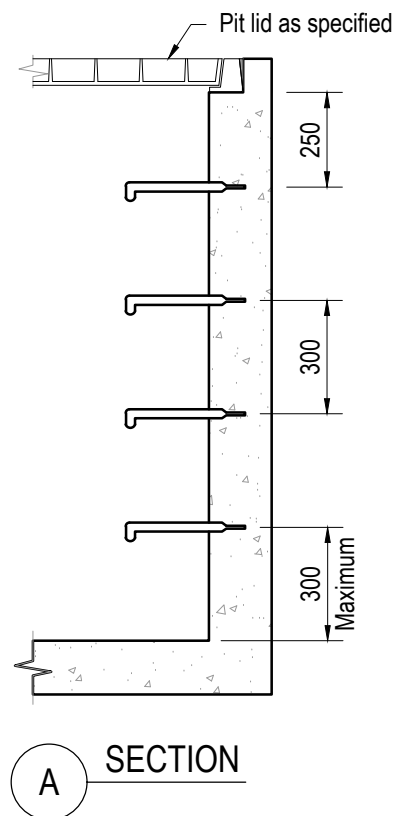


STEP IRON DETAIL
PLAN VIEW



STEP IRON DETAIL
SECTION VIEW

NOTES:

1. Drawing in millimetres unless noted otherwise.
2. Pits deeper than 1000mm shall be fitted with step irons.
3. Step irons shall be located:
 - Directly below the cover
 - Desirably on a wall without pipe openings
 - Desirably on one of the long sides of the pit
3. Material for the step irons shall be structural Grade 250 to AS3679 Part 1.
4. Step irons shall have sharp edges rounded and be hot dip galvanised after fabrication to AS / NZS 4680.
5. Approved proprietary step irons may be used and shall be installed according to the manufacturers instructions.

A APPROVED FOR USE		DEC 2020
No	Revision	Date

Disclaimer:

The authors and sponsoring organisations shall have no liability or responsibility to the user or any other person or entity with respect to any liability, loss or damage caused or alleged to be caused, directly or indirectly, by the adoption and use of these Standard Drawings including, but not limited to, any interruption of service, loss of business or anticipatory profits, or consequential damages resulting from the use of these Standard Drawings. Persons must not rely on these Standard Drawings as the equivalent of, or a substitute for, project-specific design and assessment by an appropriately qualified professional.



DRAWING NOT TO SCALE		Original Size	Drawing Title
Approved	Project Services	A3	STEP IRONS
Date	Dec. 2020	Drawing No:	CPP2110
			Rev: A