

# HERITAGE

Acknowledging the heritage context and  
reinterpreting textures within the local fabric.

**LOUISE**

8 Louise St Melbourne  
Town Planning Application  
August 2021

*Samuel.*

**CERA**  
**STRIBLEY**

Cera Stribley Pty. Ltd.  
ABN 29 350 585 700  
[www.cs-a.com.au](http://www.cs-a.com.au)

Address  
Studio 5, 249 Chapel St  
Prahran VIC AUS 3181

Contact  
+61 3 9533 2582  
[info@cs-a.com.au](mailto:info@cs-a.com.au)

Samuel Property  
ABN 73 626 319 266  
[www.samuel.com.au](http://www.samuel.com.au)

Address  
1385 Malvern Rd, Malvern PO Box 2102,  
Camberwell West VIC 3124

Contact  
[hello@samuel.com.au](mailto:hello@samuel.com.au)



# THE SAILING CLUB

Mimicing soft forms found at the local  
Albert Park sailing club.

**LOUISE**

8 Louise St Melbourne  
Town Planning Application  
August 2021

*Samuel.*

**CERA  
STRIBLEY**

Cera Stribley Pty. Ltd.  
ABN 29 350 585 700  
[www.cs-a.com.au](http://www.cs-a.com.au)

**Address**  
Studio 5, 249 Chapel St  
Prahran VIC AUS 3181

**Contact**  
+61 3 9533 2582  
[info@cs-a.com.au](mailto:info@cs-a.com.au)

**Samuel Property**  
ABN 73 626 319 266  
[www.samuel.com.au](http://www.samuel.com.au)

**Address**  
1385 Malvern Rd. Malvern PO Box 2102,  
Camberwell West VIC 3124

**Contact**  
[hello@samuel.com.au](mailto:hello@samuel.com.au)





# THE HULL

Projecting generous eaves  
that frame the form.

**LOUISE**

8 Louise St Melbourne  
Town Planning Application  
August 2021

*Samuel.*

**CERA**  
**STRIBLEY**

Cera Stribley Pty. Ltd.  
ABN 29 350 585 700  
[www.cs-a.com.au](http://www.cs-a.com.au)

**Address**  
Studio 5, 249 Chapel St  
Prahran VIC AUS 3181

**Contact**  
+61 3 9533 2582  
[info@cs-a.com.au](mailto:info@cs-a.com.au)

**Samuel Property**  
ABN 73 626 319 266  
[www.samuel.com.au](http://www.samuel.com.au)

**Address**  
1385 Malvern Rd, Malvern PO Box 2102,  
Camberwell West VIC 3124

**Contact**  
[hello@samuel.com.au](mailto:hello@samuel.com.au)



# MATERIALITY

Nature and the built environment

**LOUISE**

8 Louise St Melbourne  
Town Planning Application  
August 2021

*Samuel.*

**CERA**  
**STRIBLEY**

Cera Stribley Pty. Ltd.  
ABN 29 350 585 700  
[www.cs-a.com.au](http://www.cs-a.com.au)

**Address**  
Studio 5, 249 Chapel St  
Prahran VIC AUS 3181

**Contact**  
+61 3 9533 2582  
[info@cs-a.com.au](mailto:info@cs-a.com.au)

**Samuel Property**  
ABN 73 626 319 266  
[www.samuel.com.au](http://www.samuel.com.au)

**Address**  
1385 Malvern Rd, Malvern PO Box 2102,  
Camberwell West VIC 3124

**Contact**  
[hello@samuel.com.au](mailto:hello@samuel.com.au)





Outcome

# CONNECTING HUMANS WITH NATURE.

**LOUISE**

8 Louise St Melbourne  
Town Planning Application  
August 2021

*Samuel.*

**CERA  
STRIBLEY**

Cera Stribley Pty. Ltd.  
ABN 29 350 585 700  
[www.cs-a.com.au](http://www.cs-a.com.au)

**Address**  
Studio 5, 249 Chapel St  
Prahran VIC AUS 3181

**Contact**  
+61 3 9533 2582  
[info@cs-a.com.au](mailto:info@cs-a.com.au)

**Samuel Property**  
ABN 73 626 319 266  
[www.samuel.com.au](http://www.samuel.com.au)

**Address**  
1385 Malvern Rd, Malvern PO Box 2102,  
Camberwell West VIC 3124

**Contact**  
[hello@samuel.com.au](mailto:hello@samuel.com.au)



# DESIGN RESPONSE



# ARCHITECTURAL STATEMENT

Located off the lush tree lined boulevard of St Kilda Road and around the corner from Albert Park, 8 Louise is conceived as billowing soft tower shaped by its local context.

## CONTEXTUAL RESPONSE

Situated at the corner of Louise Street and Queens Lane, the site is surrounded by a mix of heritage residential properties and commercial towers.

The brick façade and art deco style of the adjoining heritage properties are the catalysts for the podium treatment, which is clad in red brick with soft corners punctuated by rectilinear voids. An arched portal frames the entry lobby, where brick spills down from the façade to pave the entry. The use of a singular material throughout the podium connects the ground floor landscape with the double height lobby, creating a continuous arrival experience celebrating the use of red brick.

The projecting eaves of the tower fan out above the podium like the frame of a yacht hull, mimicking the curvaceous forms found at the local Albert Park sailing club. A seam splits the tower along the primary street frontages to convey a sense of fluidity, allowing the tower to appear like floating sails.

## BIOPHILIC DESIGN

Drawing from the historic tree lined boulevard of St Kilda Road, the design responds by extending the landscape from the ground up through the podium and tower in to a vertical garden.

At ground floor, a landscaped setback to Louise Street is filled with Crepe Myrtles that accentuate the red of the brick façade. Above this in the podium, generously landscaped planters line the edge of balconies, extending the greenery from ground up. The dense greenery at the lower levels enhances the residents’ connection to nature whilst also acting as a visual filter for the apartments closest to the street. In the tower, planters drape the edges of curved slabs to accentuate the soft architectural form in a splatter of greenery that tapers away with increasing height.

With gentle curves, brick and draping greenery, the design takes the neighbouring built forms and greenery and reinterprets them to create a timeless silhouette which celebrates the historical influences of its’ surrounding environment.

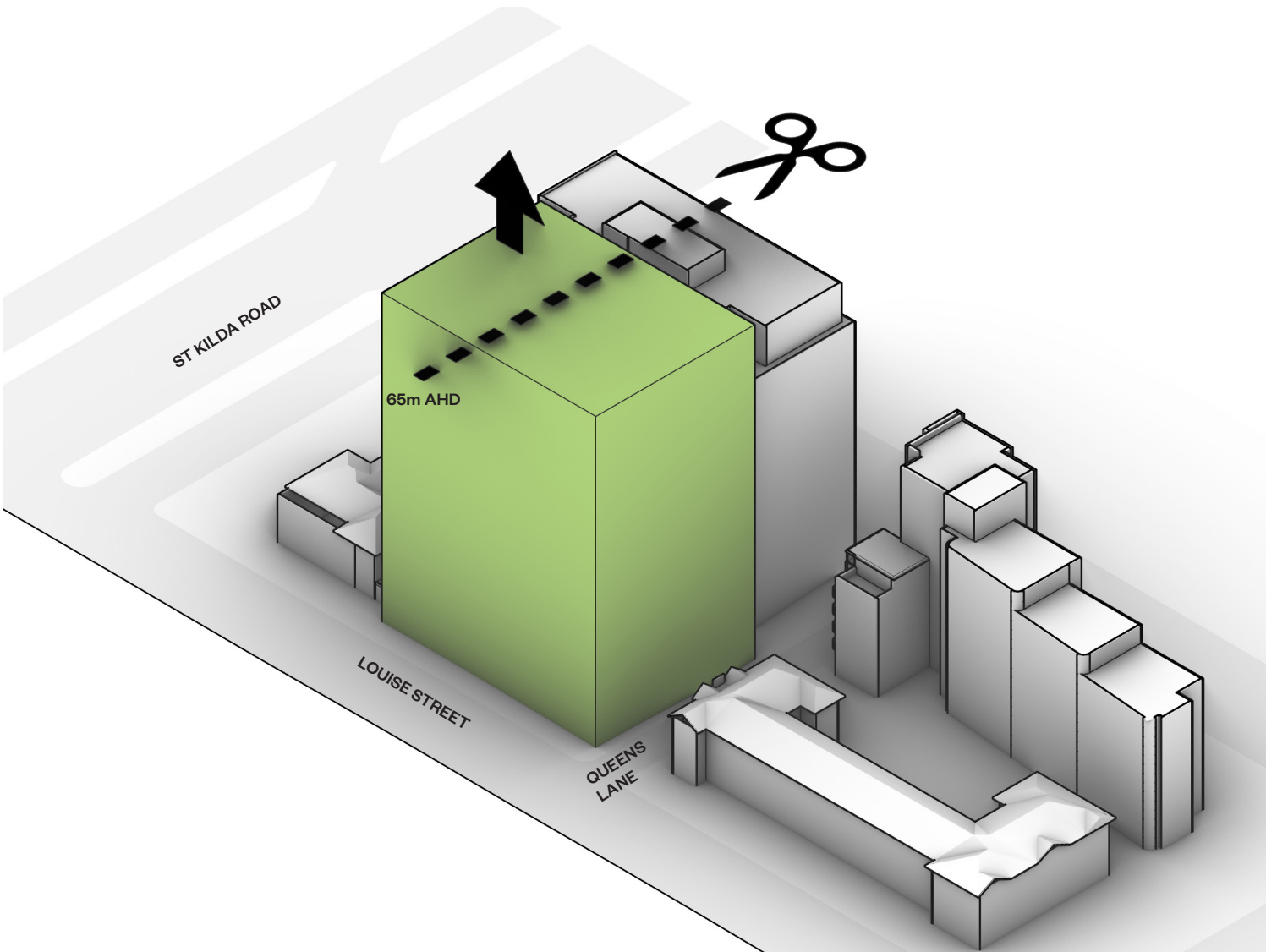




# DESIGN RESPONSE

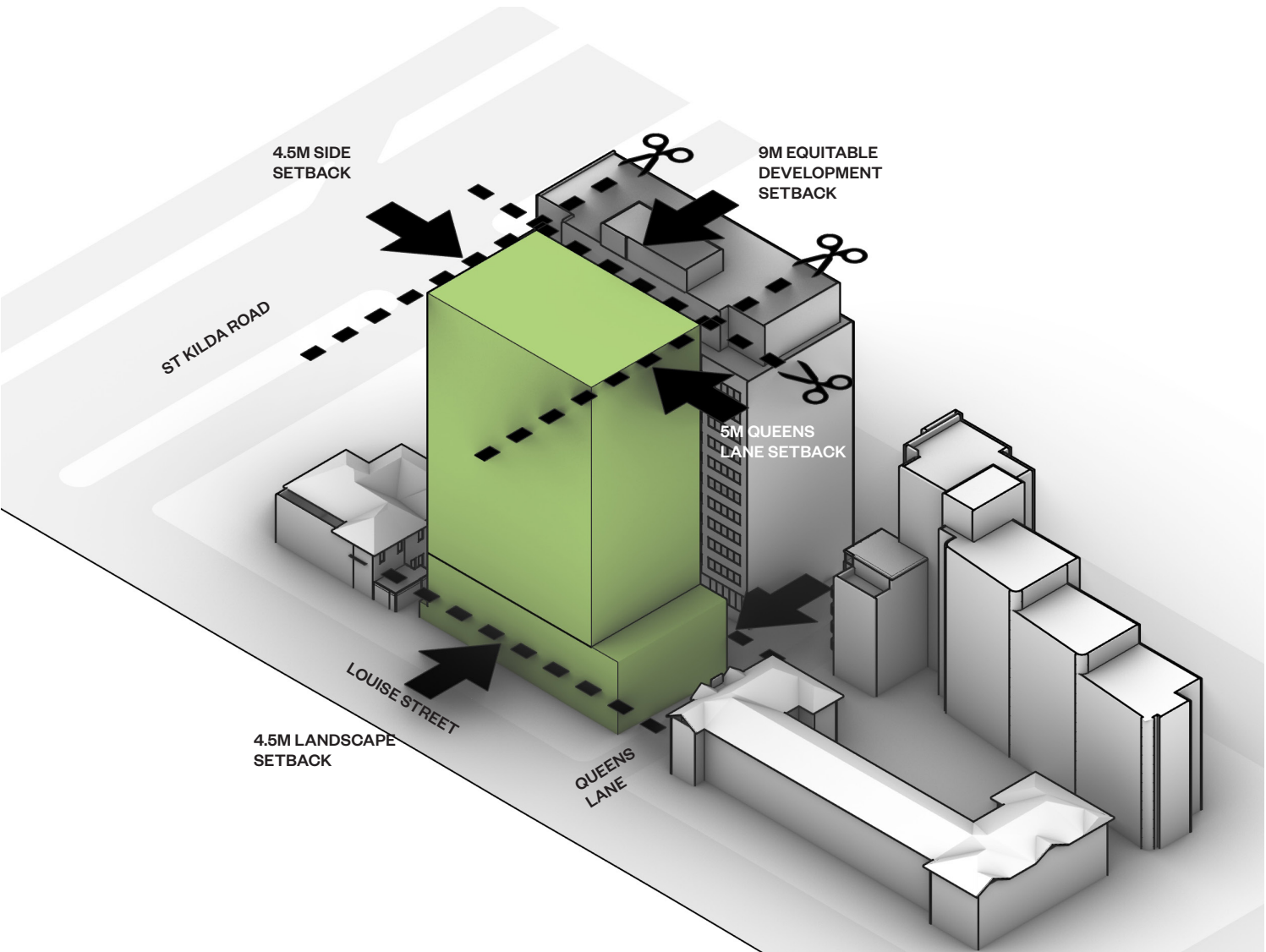
## HEIGHT RESTRICTION

65m AHD



## SETBACKS

- 4.5m landscape setback to Louise
- 4.5m setback to eastern side
- 9m setback to southern office tower
- 5m setback above podium

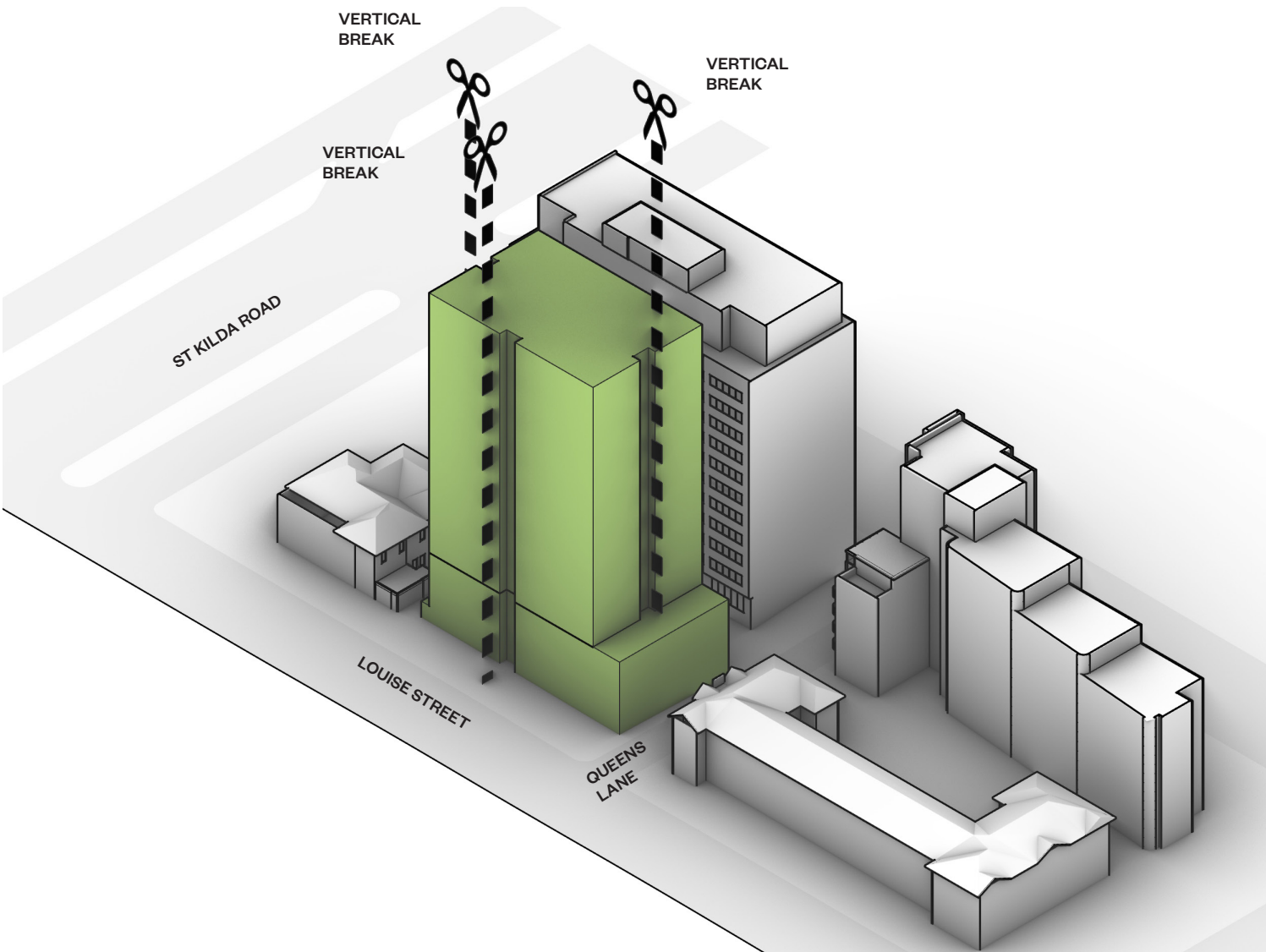




# DESIGN RESPONSE

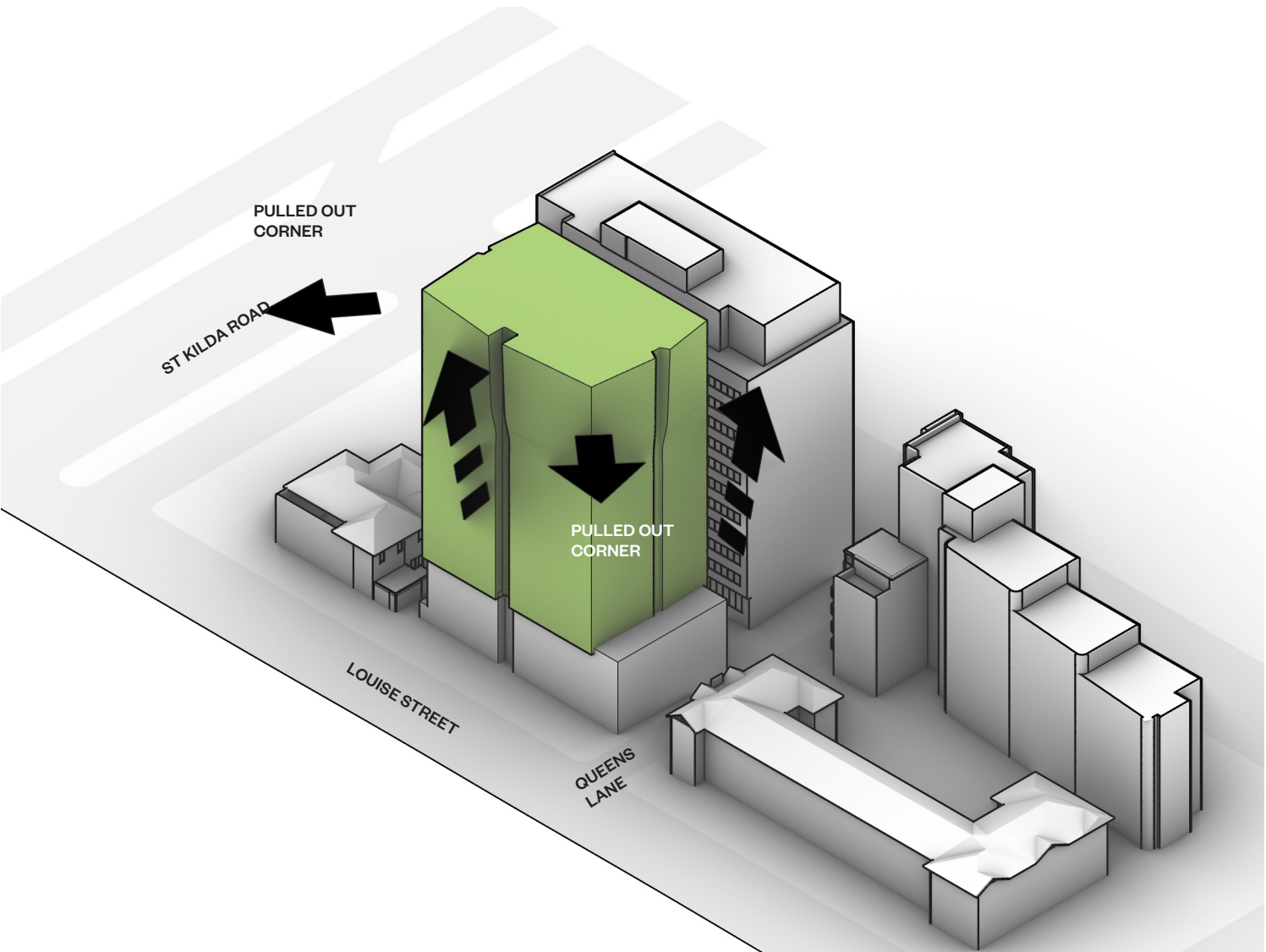
## VERTICAL BREAK

Vertical break in form to break up massing on Louise Street, Queens Lane and St Kilda Road frontages



## VIEWS

Upper floor corners pulled out to take advantage of views and increasing eave depth to protect against increasing wind.

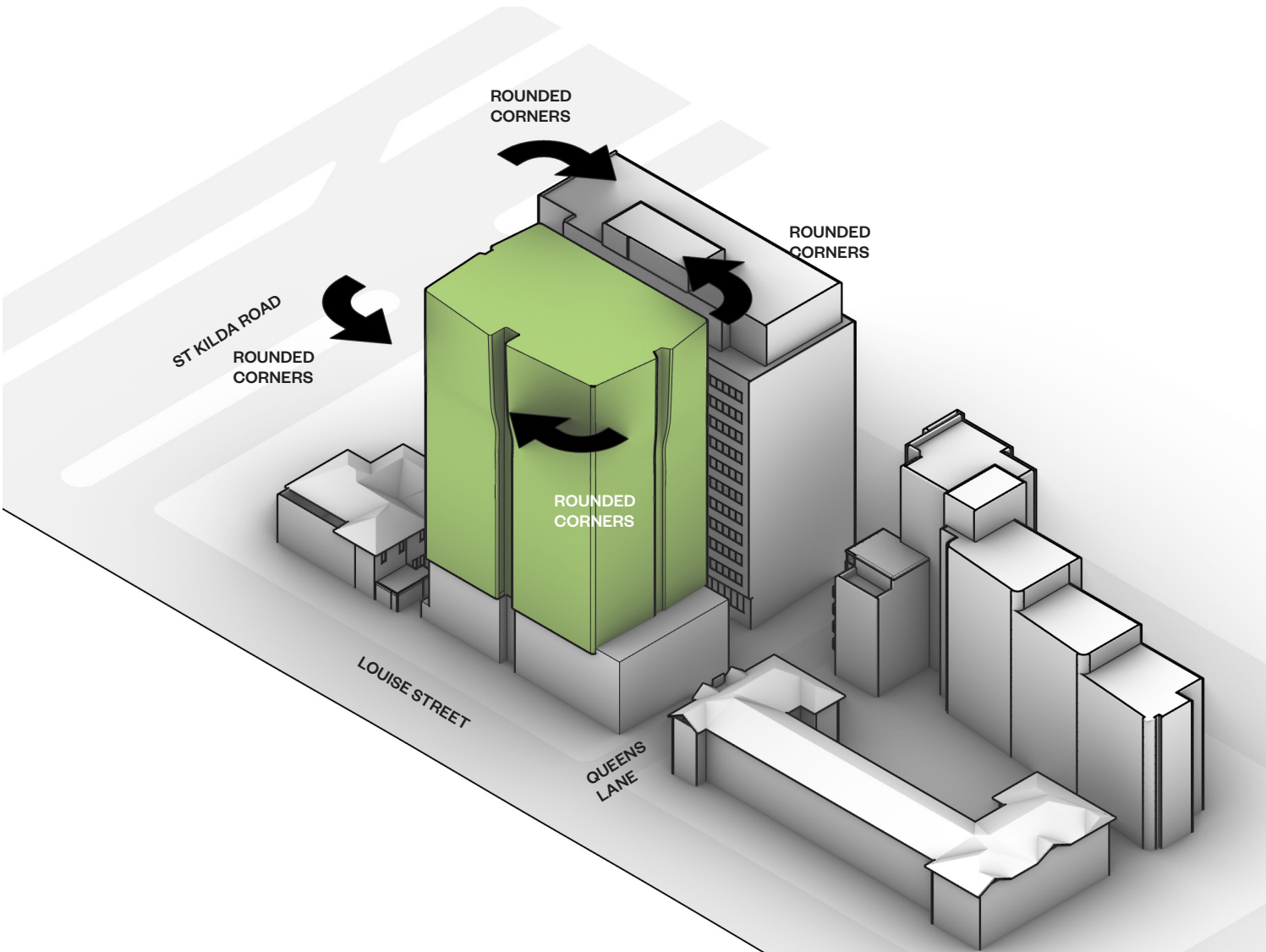




# DESIGN RESPONSE

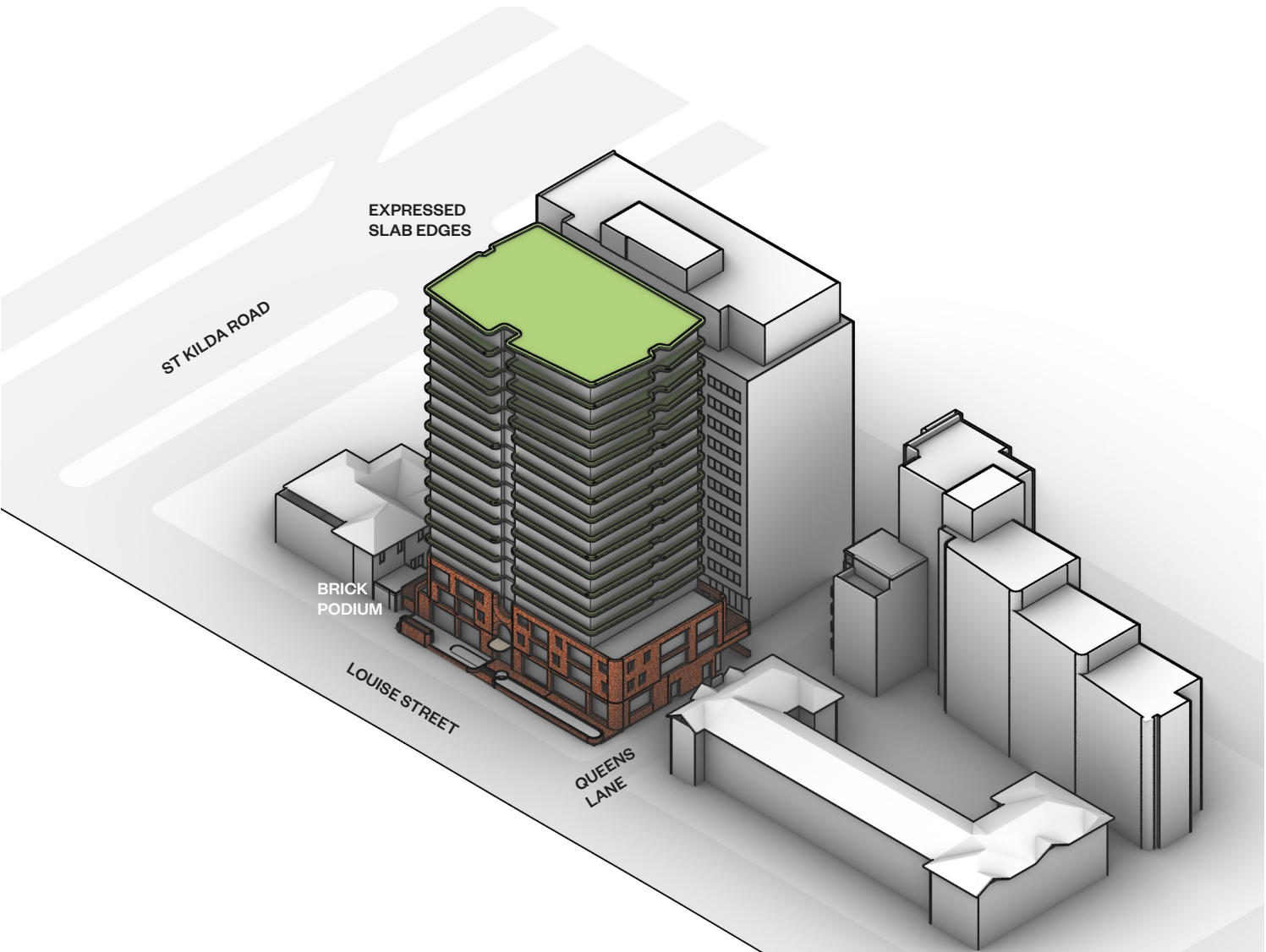
## SOFTEN CORNERS

Sharp edges are eroded in response to historic art deco architecture, whilst also reflecting the curvaceous sails of the Albert Park sailing club



## MATERIALITY

The podium is clad in red brick in response to neighbouring heritage interface. Slab edges are expressed to frame the form as a reference to the yacht hull.

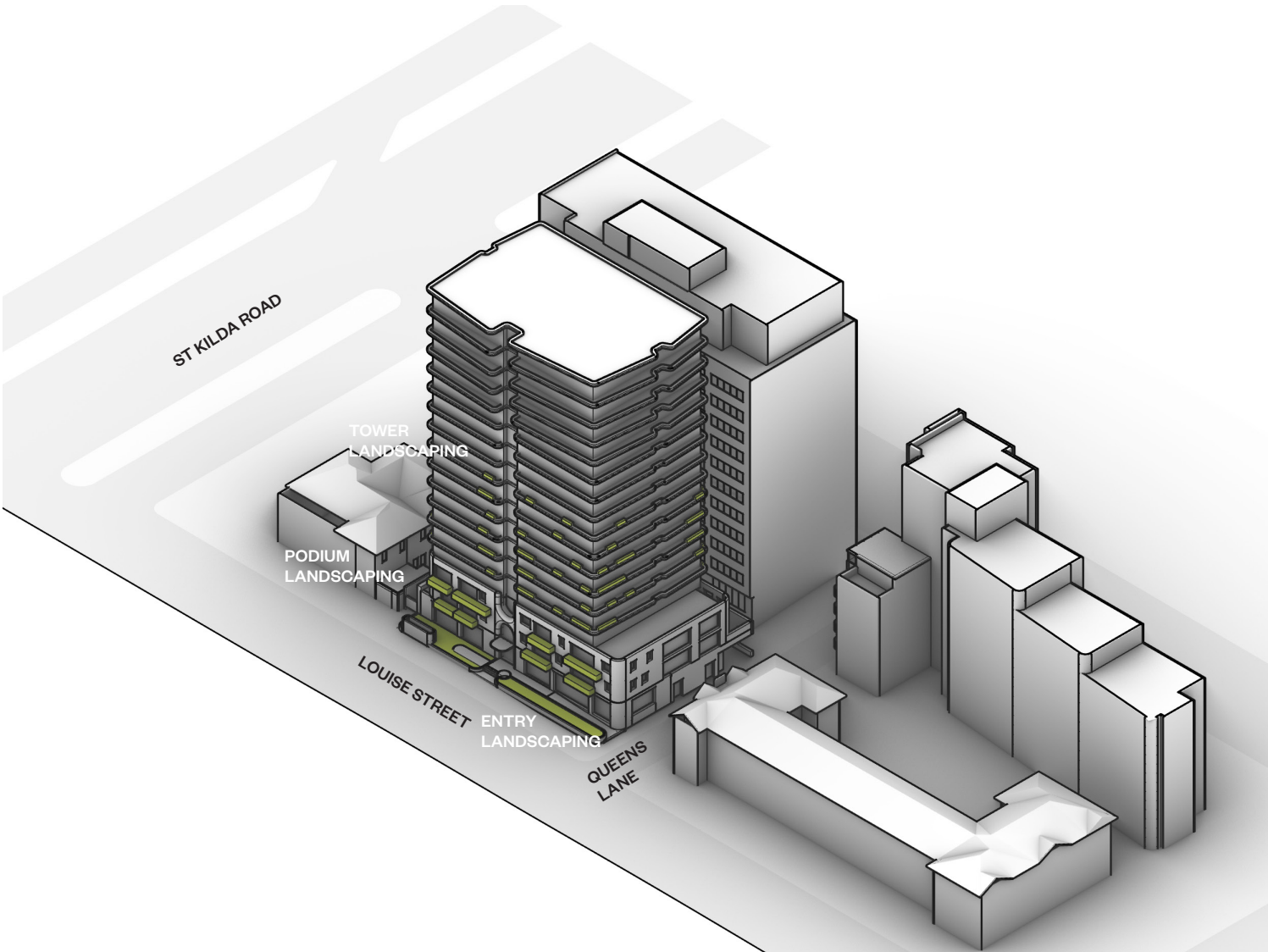




# DESIGN RESPONSE

## LANDSCAPING

Lush landscaping at ground level extends the tree line St Kilda Boulevard in to the site, which is then drawn up through the podium and tower, fading away as the building rises in response to increasing wind speeds.





# URBAN INTERFACE

## LANDSCAPING AND MATERIALITY

At ground floor the landscape setback to Louise street is planted with generous canopy trees to extend the tree lined boulevard of St Kilda Road in to the primary street interface.

Crepe myrtles enhance the red brick of the podium, which borrows the material of the neighbouring heritage building at 490 St Kilda Road and reinterprets it through use of curved forms. The entry is defined by a double height vault, flanked on either side by water features to activate and highlight the entry experience.

Bricks pop out along the facade to provide a fine grained texture that wraps the corner to the laneway facade, providing a consistent material response at the urban interface.





# COMMUNAL FACILITIES

## AMENITIES AND TERRACE

The ground floor is setback by 3m on the eastern edge, providing a buffer to the adjoining residential property. This provides a generous landscaped terrace to the communal facilities on the ground floor and presents a softened edge to the sensitive eastern interface.





# PODIUM LANDSCAPING

## BALCONY PLANTERS

The lush landscape at ground floor is extended up through the podium, where balconies are lined with planters to create a landscaped edge.

The solid planters also provide a layer of privacy to the lower level apartments, where the landscaped edges act as a visual filter for residents whilst also enhancing the streetscape.





# VERTICAL GARDEN

## LANDSCAPED EDGES

Landscaping is further extended up through the lower levels of the tower to create a vertical garden which feathers out at the upper levels to open up views.

The greenery drapes the edges of the tower to further soften the curved form and nestle the tower in the backdrop of the tree lined St Kilda Road boulevard.





# FINISHES

01. CN01

**CONCRETE 01**  
CONCRETE SLAB EDGE  
COLOUR: LIGHT GREY
02. CN02

**CONCRETE 02**  
CONCRETE BOARD MARKED  
COLOUR: LIGHT GREY
03. BR01

**BRICK 01**  
BRICK CLADDING  
COLOUR: RED
04. GL01

**GLAZING 01**  
VISION GLASS  
COLOUR: CLEAR
05. GL02

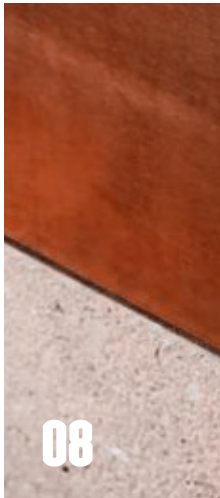
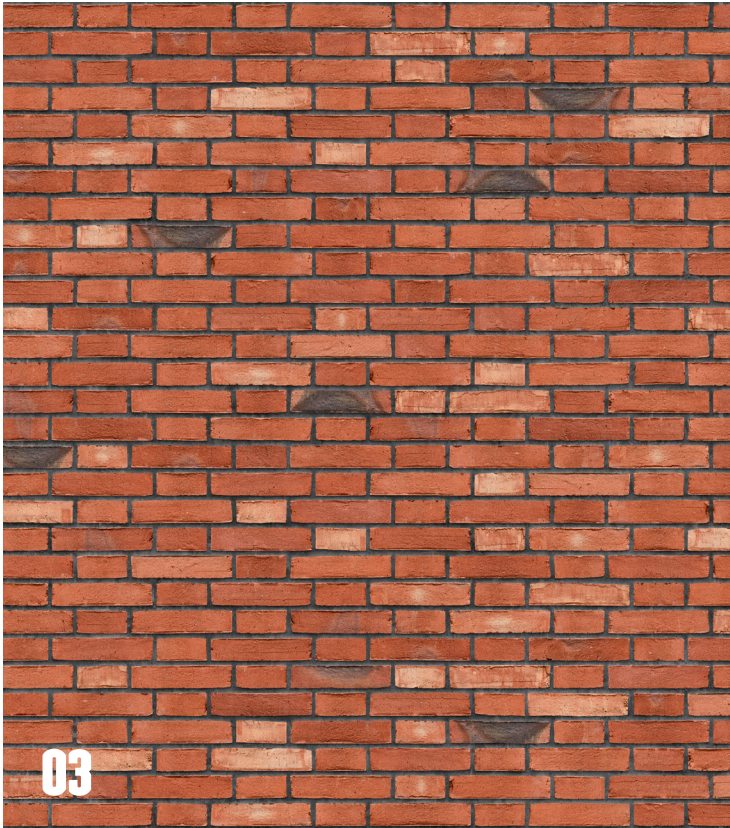
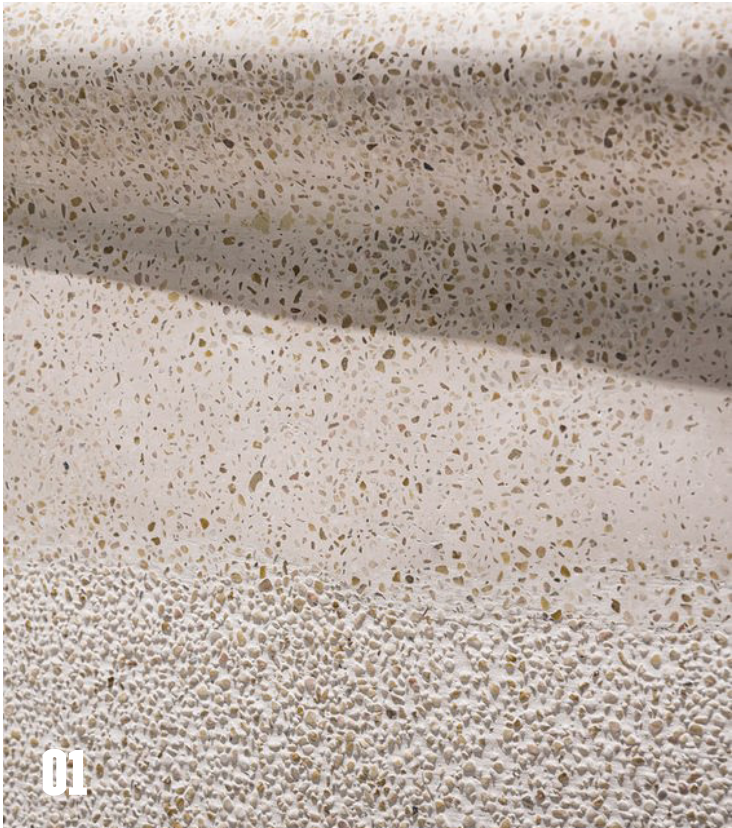
**GLAZING 02**  
GLASS BALUSTRADE  
COLOUR: CLEAR
06. MF01

**METAL FINISH 01**  
METAL BALUSTRADE  
COLOUR: BLACK
07. MF02

**METAL FINISH 02**  
METAL POWDER COAT  
COLOUR: BLACK
08. MF03

**METAL FINISH 03**  
METAL TRIM  
COLOUR: BRONZE
09. PF01

**PAINT FINISH 01**  
EXTERNAL PAINT FINISH  
COLOUR: BLACK





# ARTIST IMPRESSIONS

LOUISE

8 Louise St Melbourne  
Town Planning Application  
August 2021

Samuel.

CERA  
STRIBLEY

Cera Stribley Pty. Ltd.  
ABN 29 350 585 700  
www.cs-a.com.au



Address  
1234 Main St, Melbourne

Contact  
03 1234 5678  
info@samuel.com.au

Samuel Property  
ABN 12 345 678 901  
www.samuel.com.au

Address  
1234 Main St, Melbourne

Contact  
hello@samuel.com.au



# ARTIST IMPRESSIONS

LOUISE

8 Louise St Melbourne  
Town Planning Application  
August 2021

Samuel.

CERA  
STRIBLEY

Cera Stribley Pty. Ltd.  
ABN 29 350 585 700  
www.cs-a.com.au

Address  
8 Louise St Melbourne  
VIC 3000

Contact  
03 9553 1234  
hello@cs-a.com.au

Annual Property  
Value \$10,000,000  
PO Box 2102

Address  
8 Louise St Melbourne  
VIC 3000

Contact  
03 9553 1234  
hello@cs-a.com.au





# ARTIST IMPRESSIONS



**LOUISE**

8 Louise St Melbourne  
Town Planning Application  
August 2021

*Samuel.*

**CERA  
STRIBLEY**

Cera Stribley Pty. Ltd.  
ABN 29 350 585 700  
[www.cs-a.com.au](http://www.cs-a.com.au)

**Address**  
Studio 5, 249 Chapel St  
Prahran VIC AUS 3181

**Contact**  
+61 3 9533 2582  
[info@cs-a.com.au](mailto:info@cs-a.com.au)

**Samuel Property**  
ABN 73 626 319 266  
[www.samuel.com.au](http://www.samuel.com.au)

**Address**  
1385 Malvern Rd, Malvern PO Box 2102,  
Camberwell West VIC 3124

**Contact**  
[hello@samuel.com.au](mailto:hello@samuel.com.au)