

Current Queens Lane Impactful Works

Key developers have advised of their fortnightly works program up to and including 17 November 2025.

The following works are likely to impact the community during this period, beyond standard works:

31 Queens Road

Tower Crane removal works are programmed for 14 November to 16 November 2025 (originally planned for 7-9 November 2025 but delayed due to weather). This will involve Out-of-Hours work and closure of Queens Lane.

- Works are planned from 7pm-7am on 14 November 2025, 7am-7pm on 15 November 2025 and 7am-6pm on 16 November 2025.
- Queens Lane will be closed from 7pm on 14 November 2025 until 6pm on 16 November 2025. Traffic controllers will be in place to assist. Details are provided below:



Connection to Legal Point of Discharge is programmed for 6 November 2025. This will involve Out-of-Hours night work, and road lane closures and speed limit changes on Queens Road.

- Out-of-Hours works are planned from 10pm to 4.30am.
- One outbound lane will be closed on Queens Road during these times and speeds will be reduced from 60km/h to 40km/h. Further details are provided below:

- Traffic controllers will maintain access along Louise Street. All works to occur within development construction zone.

Mobile crane works for the lifting of planter boxes is planned for 12 November 2025.

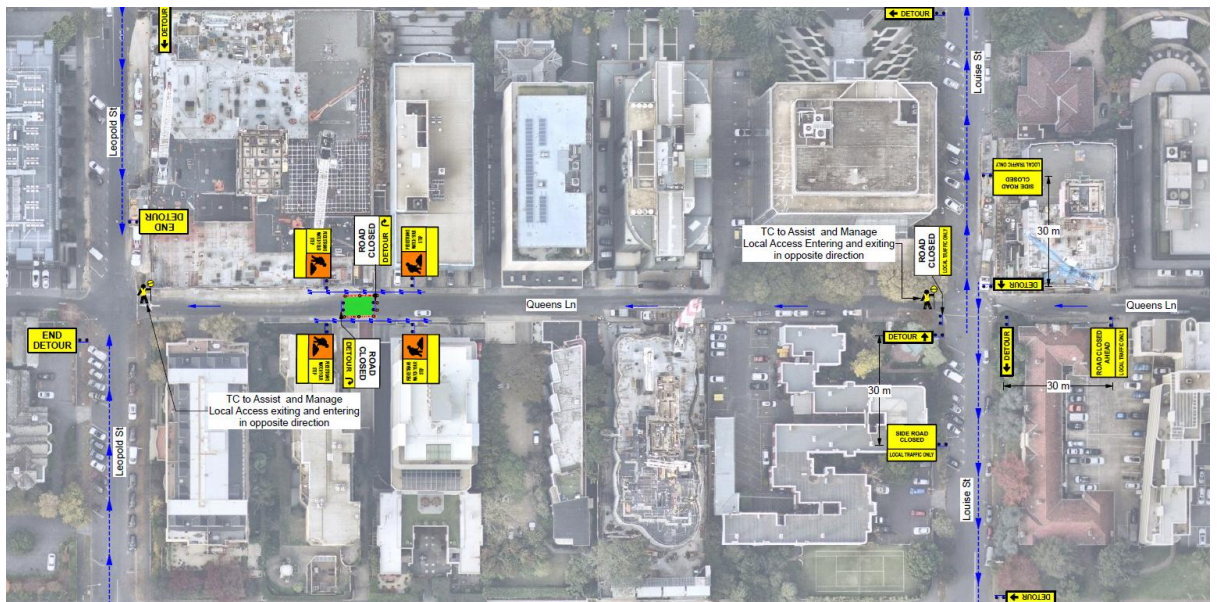
- Traffic controllers will maintain access along Louise Street. All works to occur within development construction zone.

For further information, please contact Matthew McNulty on 0479 195 469.

472-474 St Kilda Road

Sewer works are programmed for 5 November 2025. This will involve road closures on Queens Lane adjacent to the development.

- Works are planned to occur from 8.30am to 4pm.
- Queens Lane will be closed adjacent to this development during this period as shown below. Onsite traffic controllers will assist local traffic.



Large concrete pour is planned on 8 October 2025. This will involve Out-Of-Hours works.

- Out-Of-Hours works will run from 7am to 9am.

For further information, please contact Leigh Papageorge on 0423 479 278.