



Orbit Solutions Pty Ltd

PO Box 736
Port Melbourne
VIC 3207

vic@orbitsolutions.com.au
www.orbitsolutions.com.au

+61 3 9690 4488

Memberships & Associations



Copyright of this document and the materials included in it are owned by Orbit Solutions Pty Ltd, and we reserve all rights. You may not copy or distribute any text materials or any photography, illustration, artwork or other graphic material contained for any use without first obtaining the written permission of a Director of Orbit Solutions Pty Ltd.

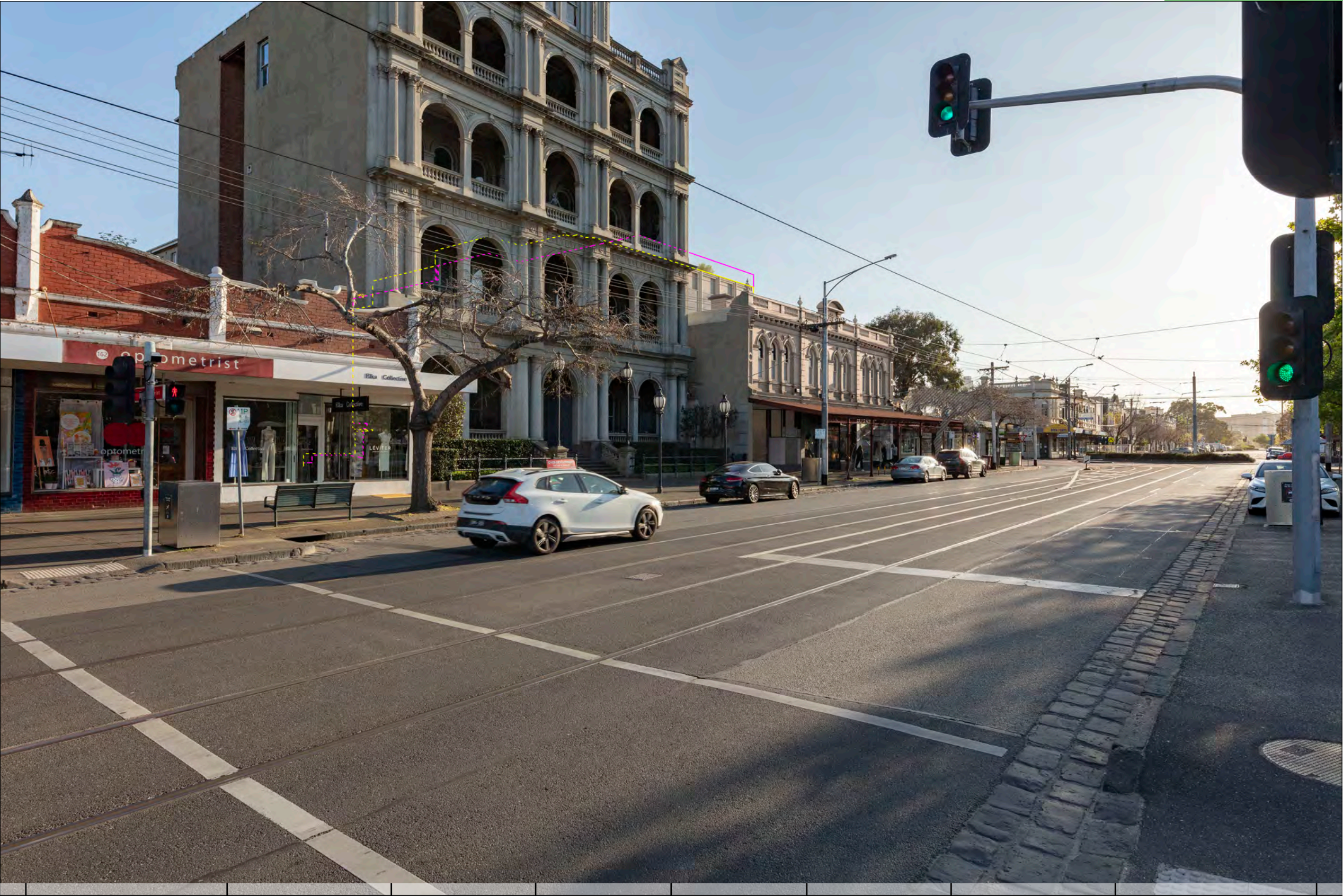
VCAT Ref No: TBC

Site Address: 146-150 Bridport Street, Albert Park VIC 3206

For: JD Bridport Street 1 Pty Ltd

Section: 09
PHOTOMONTAGE 01

Date Issued: 04 April 2025
Project No: V25002
Revision: -



View 01 - Proposed Built Form with Landscaping & Endorsed and Proposed Building Outlines

- Endorsed built form – Unoccluded silhouette (excludes vegetation)
- Endorsed built form – Silhouette that is occluded by existing built form (excludes vegetation)
- Proposed built form – Unoccluded silhouette (excludes vegetation)
- Proposed built form – Silhouette that is occluded by existing built form (excludes vegetation)
- White/grey hatch is shown where existing elements are to be removed/demolished and no proposed elements conceal existing elements that would be revealed.





View 02 - Original Photograph @20mm

PHOTOGRAPH DETAILS

Location description:	Corner of Dundas Place & Montague ST, on pedestrian thoroughfare/ forecourt area outside Albert Park hotel
Date & time taken:	07:14am EST on 26/9/2023
Height from ground:	1.65m
Distance to site:	74m

EQUIPMENT SPECIFICATIONS

Camera:	Canon 5DSR Full Frame
Lens:	Sigma 20mm f 1 /4 DG HSM Art Lens
Focal length:	20mm
Field of view (FOV):	84.0 deg (horizontal)



Orbit Solutions Pty Ltd

PO Box 736
Port Melbourne
VIC 3207

vic@orbitsolutions.com.au
www.orbitsolutions.com.au

+61 3 9690 4488

Memberships & Associations



Copyright of this document and the materials included in it are owned by Orbit Solutions Pty Ltd, and we reserve all rights. You may not copy or distribute any text materials or any photography, illustration, artwork or other graphic material contained for any use without first obtaining the written permission of a Director of Orbit Solutions Pty Ltd.

VCAT Ref No: TBC

Site Address:
146-150 Bridport Street,
Albert Park VIC 3206

For:
JD Bridport Street 1 Pty Ltd

Section: 01
PHOTOMONTAGE 02

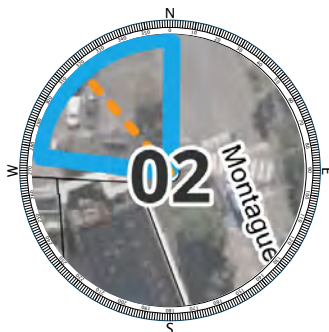
Date Issued: 04 April 2025
Project No: V25002
Revision: -



View 02 - AlignView with Point Cloud Dataset

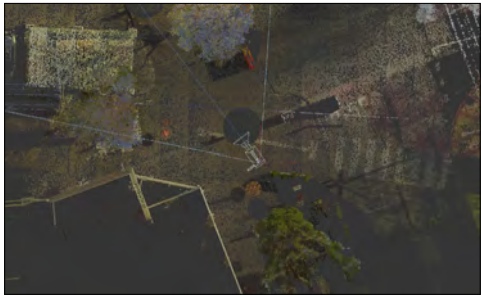
FIELD WORK DETAILS

Easting:	320130.07
Northing:	5809836.92
Date taken:	29/09/2023
Ground (RL):	3.8m
Height from ground:	1.65m
LIDAR Scanner:	Leica Cyclone Register 360



LEGEND	
	Field of view
	Viewing direction
	Proposed built form – Unoccluded silhouette (excludes vegetation)
	Proposed built form – Silhouette that is occluded by existing built form (excludes vegetation)

Point Cloud Survey Top View



Orbit Solutions Pty Ltd

PO Box 736
Port Melbourne
VIC 3207

vic@orbitsolutions.com.au
www.orbitsolutions.com.au

+61 3 9690 4488

Memberships & Associations



Australian
Institute of
Architects



Victorian Planning &
Environmental Law Association

THIS IS NOT A PHOTOGRAPH

It is a Point Cloud Survey of the camera position by the licensed land surveyor.

This is used to precisely locate and orient the 3D camera to match the photograph.

See Statement of Evidence.

Copyright of this document and the materials included in it are owned by Orbit Solutions Pty Ltd, and we reserve all rights. You may not copy or distribute any text materials or any photography, illustration, artwork or other graphic material contained for any use without first obtaining the written permission of a Director of Orbit Solutions Pty Ltd.

VCAT Ref No:

TBC

Site Address:

146-150 Bridport Street,
Albert Park VIC 3206

For:

JD Bridport Street 1 Pty Ltd

Section:

02

PHOTOMONTAGE 02

Date Issued:

04 April 2025

Project No:

V25002

Revision:

–



View 02 - Photograph with Endorsed and Proposed Building Outlines

- Endorsed built form – Unoccluded silhouette (excludes vegetation)
- Endorsed built form – Silhouette that is occluded by existing built form (excludes vegetation)
- Proposed built form – Unoccluded silhouette (excludes vegetation)
- Proposed built form – Silhouette that is occluded by existing built form (excludes vegetation)
- White/grey hatch is shown where existing elements are to be removed/demolished and no proposed elements conceal existing elements that would be revealed.



Orbit Solutions Pty Ltd

PO Box 736
Port Melbourne
VIC 3207

vic@orbitsolutions.com.au
www.orbitsolutions.com.au

+61 3 9690 4488

Memberships & Associations



Copyright of this document and the materials included in it are owned by Orbit Solutions Pty Ltd, and we reserve all rights. You may not copy or distribute any text materials or any photography, illustration, artwork or other graphic material contained for any use without first obtaining the written permission of a Director of Orbit Solutions Pty Ltd.

VCAT Ref No: TBC

Site Address:
146-150 Bridport Street,
Albert Park VIC 3206

For:
JD Bridport Street 1 Pty Ltd

Section:
03
PHOTOMONTAGE 02

Date Issued:
04 April 2025

Project No:
V25002

Revision:
-



View 02 - Endorsed Built Form

White/grey hatch is shown where existing elements are to be removed/demolished and no proposed elements conceal existing elements that would be revealed.



Orbit Solutions Pty Ltd

PO Box 736
Port Melbourne
VIC 3207

vic@orbitsolutions.com.au
www.orbitsolutions.com.au

+61 3 9690 4488

Memberships & Associations



Australian
Institute of
Architects



Victorian Planning &
Environmental Law Association

Copyright of this document and the materials included in it are owned by Orbit Solutions Pty Ltd, and we reserve all rights. You may not copy or distribute any text materials or any photography, illustration, artwork or other graphic material contained for any use without first obtaining the written permission of a Director of Orbit Solutions Pty Ltd.

VCAT Ref No:

TBC

Site Address:

146-150 Bridport Street,
Albert Park VIC 3206

For:

JD Bridport Street 1 Pty Ltd

Section:

04

PHOTOMONTAGE 02

Date Issued:

04 April 2025

Project No:

V25002

Revision:

-





View 02 - Endorsed Built Form with Landscaping



White/grey hatch is shown where existing elements are to be removed/demolished and no proposed elements conceal existing elements that would be revealed.



Orbit Solutions Pty Ltd

PO Box 736
Port Melbourne
VIC 3207

vic@orbitsolutions.com.au
www.orbitsolutions.com.au

+61 3 9690 4488

Memberships & Associations



Australian
Institute of
Architects



Victorian Planning &
Environmental Law Association

Copyright of this document and the materials included in it are owned by Orbit Solutions Pty Ltd, and we reserve all rights. You may not copy or distribute any text materials or any photography, illustration, artwork or other graphic material contained for any use without first obtaining the written permission of a Director of Orbit Solutions Pty Ltd.

VCAT Ref No:

TBC

Site Address:

146-150 Bridport Street,
Albert Park VIC 3206

For:

JD Bridport Street 1 Pty Ltd

Section:

05
PHOTOMONTAGE 02

Date Issued:

04 April 2025

Project No:

V25002

Revision:

-



View 02 - Endorsed Built Form with Landscaping & Endorsed and Proposed Building Outlines

- Endorsed built form – Unoccluded silhouette (excludes vegetation)
- Endorsed built form – Silhouette that is occluded by existing built form (excludes vegetation)
- Proposed built form – Unoccluded silhouette (excludes vegetation)
- Proposed built form – Silhouette that is occluded by existing built form (excludes vegetation)
- White/grey hatch is shown where existing elements are to be removed/demolished and no proposed elements conceal existing elements that would be revealed.



Orbit Solutions Pty Ltd

PO Box 736
Port Melbourne
VIC 3207

vic@orbitsolutions.com.au
www.orbitsolutions.com.au

+61 3 9690 4488

Memberships & Associations



Copyright of this document and the materials included in it are owned by Orbit Solutions Pty Ltd, and we reserve all rights. You may not copy or distribute any text materials or any photography, illustration, artwork or other graphic material contained for any use without first obtaining the written permission of a Director of Orbit Solutions Pty Ltd.

VCAT Ref No: TBC

Site Address:
146-150 Bridport Street,
Albert Park VIC 3206

For:
JD Bridport Street 1 Pty Ltd

Section:
06
PHOTOMONTAGE 02

Date Issued: 04 April 2025
Project No: V25002
Revision: -



View 02 - Proposed Built Form

White/grey hatch is shown where existing elements are to be removed/demolished and no proposed elements conceal existing elements that would be revealed.



Orbit Solutions Pty Ltd

PO Box 736
Port Melbourne
VIC 3207

vic@orbitsolutions.com.au
www.orbitsolutions.com.au

+61 3 9690 4488

Memberships & Associations



Copyright of this document and the materials included in it are owned by Orbit Solutions Pty Ltd, and we reserve all rights. You may not copy or distribute any text materials or any photography, illustration, artwork or other graphic material contained for any use without first obtaining the written permission of a Director of Orbit Solutions Pty Ltd.

VCAT Ref No: TBC

Site Address:
146-150 Bridport Street,
Albert Park VIC 3206

For:
JD Bridport Street 1 Pty Ltd

Section:
07
PHOTOMONTAGE 02

Date Issued:
04 April 2025

Project No:
V25002

Revision:
-



View 02 - Proposed Built Form with Landscaping

White/grey hatch is shown where existing elements are to be removed/demolished and no proposed elements conceal existing elements that would be revealed.



Orbit Solutions Pty Ltd

PO Box 736
Port Melbourne
VIC 3207

vic@orbitsolutions.com.au
www.orbitsolutions.com.au

+61 3 9690 4488

Memberships & Associations



Copyright of this document and the materials included in it are owned by Orbit Solutions Pty Ltd, and we reserve all rights. You may not copy or distribute any text materials or any photography, illustration, artwork or other graphic material contained for any use without first obtaining the written permission of a Director of Orbit Solutions Pty Ltd.

VCAT Ref No: **TBC**

Site Address:
**146-150 Bridport Street,
Albert Park VIC 3206**

For:
JD Bridport Street 1 Pty Ltd

Section: **08
PHOTOMONTAGE 02**

Date Issued: 04 April 2025

Project No: V25002

Revision: -



View 02 - Proposed Built Form with Landscaping & Endorsed and Proposed Building Outlines

- Endorsed built form – Unoccluded silhouette (excludes vegetation)
- Endorsed built form – Silhouette that is occluded by existing built form (excludes vegetation)
- Proposed built form – Unoccluded silhouette (excludes vegetation)
- Proposed built form – Silhouette that is occluded by existing built form (excludes vegetation)
- White/grey hatch is shown where existing elements are to be removed/demolished and no proposed elements conceal existing elements that would be revealed.



Orbit Solutions Pty Ltd

PO Box 736
Port Melbourne
VIC 3207

vic@orbitsolutions.com.au
www.orbitsolutions.com.au

+61 3 9690 4488

Memberships & Associations



Copyright of this document and the materials included in it are owned by Orbit Solutions Pty Ltd, and we reserve all rights. You may not copy or distribute any text materials or any photography, illustration, artwork or other graphic material contained for any use without first obtaining the written permission of a Director of Orbit Solutions Pty Ltd.

VCAT Ref No: **TBC**

Site Address:
**146-150 Bridport Street,
Albert Park VIC 3206**

For:
JD Bridport Street 1 Pty Ltd

Section: **09**
PHOTOMONTAGE 02

Date Issued: 04 April 2025

Project No: V25002

Revision: -



View 03 - Original Photograph @20mm

PHOTOGRAPH DETAILS

Location description:	Eastern Corner of Montague St & Bevan St, on footpath, adjacent to gated entry to 45 Bevan St
Date & time taken:	09:35am EST on 25/9/2023
Height from ground:	1.65m
Distance to site:	48m

EQUIPMENT SPECIFICATIONS

Camera:	Canon 5DSR Full Frame
Lens:	Sigma 20mm f 1 / 4 DG HSM Art Lens
Focal length:	20mm
Field of view (FOV):	84.0 deg (horizontal)



Orbit Solutions Pty Ltd

PO Box 736
Port Melbourne
VIC 3207

vic@orbitsolutions.com.au
www.orbitsolutions.com.au

+61 3 9690 4488

Memberships & Associations



Copyright of this document and the materials included in it are owned by Orbit Solutions Pty Ltd, and we reserve all rights. You may not copy or distribute any text materials or any photography, illustration, artwork or other graphic material contained for any use without first obtaining the written permission of a Director of Orbit Solutions Pty Ltd.

VCAT Ref No: **TBC**

Site Address:
**146-150 Bridport Street,
Albert Park VIC 3206**

For:
JD Bridport Street 1 Pty Ltd

Section: **01**
PHOTOMONTAGE 03

Date Issued:	04 April 2025
Project No:	V25002
Revision:	-



Orbit Solutions Pty Ltd

PO Box 736
Port Melbourne
VIC 3207

vic@orbitsolutions.com.au
www.orbitsolutions.com.au

+61 3 9690 4488

Memberships & Associations



THIS IS NOT A PHOTOGRAPH

It is a Point Cloud Survey of the camera position by the licensed land surveyor.

This is used to precisely locate and orient the 3D camera to match the photograph.

See Statement of Evidence.

Copyright of this document and the materials included in it are owned by Orbit Solutions Pty Ltd, and we reserve all rights. You may not copy or distribute any text materials or any photography, illustration, artwork or other graphic material contained for any use without first obtaining the written permission of a Director of Orbit Solutions Pty Ltd.

VCAT Ref No:

TBC

Site Address:

146-150 Bridport Street,
Albert Park VIC 3206

For:

JD Bridport Street 1 Pty Ltd

Section:

02

PHOTOMONTAGE 03

Date Issued:

04 April 2025

Project No:

V25002

Revision:

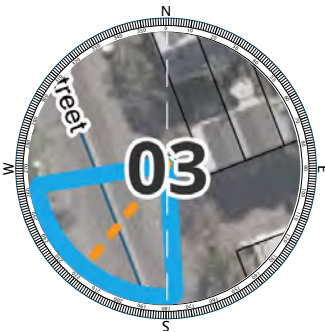
-



View 03 - AlignView with Point Cloud Dataset

FIELD WORK DETAILS

Easting: 320100.08
Northing: 5809969.65
Date taken: 29/09/2023
Ground (RL): 5.75m
Height from ground: 1.65m
LIDAR Scanner: Leica Cyclone Register 360



LEGEND

- Field of view
- Viewing direction
- Proposed built form – Unoccluded silhouette (excludes vegetation)
- Proposed built form – Silhouette that is occluded by existing built form (excludes vegetation)

Point Cloud Survey Top View

