

What to do with larger household items

Do not place items on the naturestrip without a hard and green waste booking. This is illegal and fines may apply.

Mattresses, furniture or appliances that are in good working condition can be donated or sold online. If broken, consider getting them fixed.

Council Resource Recovery Centre

Corner of White and Boundary Streets, South Melbourne.

Open Mon-Fri, 7.30 am to 3.30 pm
Sat-Sun, 9 am to 1 pm
Closed public holidays.



Drop items off at the Resource Recovery Centre – fees apply for non-recyclable material. Identification with your current address must be shown prior to entry.

How to book Hard and green waste

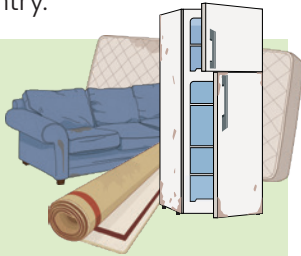
Call us or book online:

ASSIST 03 9209 6777
portphillip.vic.gov.au

If you're in an apartment, get your Building Manager to book on your behalf.

To get ready for your collection:

1. Place items out the day before.
2. Keep collection under a trailer load or two cubic metres.
3. Keep each item under 1.5 metres in length and 50 kg in weight.
4. Sort items into three piles: one for hard waste, another for green waste and a third for metal, whitegoods and electronic waste.



If you need this information in an alternative format, such as large print, audio or braille, please contact us: **03 9209 6777**



Language Services

If you need an interpreter, call TIS National on 131 450. Ask them to call the City of Port Phillip on (03) 9209 6777.

Simplified Chinese (简体中文)

如果您需要口译员，请拨打 TIS National 的电话 131 450。请他们拨打 (03) 9209 6777 联系 Port Phillip 市政府。

Spanish (Español)

Si necesita un intérprete, llame a TIS National al 131 450. Pídale que llamen al Ayuntamiento de la Ciudad de Port Phillip al (03) 9209 6777.

Russian (Русский)

Если вам нужен переводчик, позвоните в TIS National по номеру 131 450. Попросите их позвонить в администрацию города Порт-Филлип по номеру (03) 9209 6777.

Greek (Ελληνικά)

Αν χρειάζεστε διερμηνέα, καλέστε το TIS National στο 131 450. Ζητήστε τους να καλέσουν τον Δήμο Port Phillip στο (03) 9209 6777.

If you're deaf, hard of hearing or have a speech impairment, you can contact us through the National Relay Service, ask for ASSIST – Port Phillip at **03 9209 6777**.

COPP_06/26

Welcome to City of Port Phillip!

Find out how to use your bins and recycle unwanted items from your move. A small act makes a big impact.



How to use your bins

For a full list visit portphillip.vic.gov.au/council-services/waste-recycling-and-rubbish/guide-to-recycling-bins-and-services

Not in any bin: Electronic waste or power cords, vapes, batteries of any kind, chemicals or hazardous waste, building waste, soil or rubble.
Scan the QR code to find out where to dispose of these items.



Food and garden organics

Food scraps and garden clippings only.
Remove stickers from fruit.

✓ Yes

- ✓ Out of date, inedible food
- ✓ Coffee grounds, loose leaf tea
- ✓ Dairy products including yoghurt
- ✓ Council-specified compostable liners
- ✓ Fruit and vegetable scraps
- ✓ Meat, seafood, bones, egg shells
- ✓ Leaves, plants, twigs, grass, weeds



⊘ No

Plastic, including biodegradable or non-certified compostable plastics, coffee pods, tea bags, kitty litter, animal droppings, large branches, tree stumps, liquids, nappies, wet wipes.

Mixed recycling

Put recycling in the bin loose, not in bags.
Flatten boxes to save space.

✓ Yes

- ✓ Accepted plastic bottles and containers
- ✓ Aluminium and steel tins, cans, foil
- ✓ Cardboard, cereal boxes, egg cartons
- ✓ Paper, newspapers, magazines, paper envelopes
- ✓ Glass bottles and jars



⊘ No

Plastic bags, other soft plastics, clothing, shoes, textiles, coated or waxed cardboard, electronic waste and batteries, crockery, polystyrene (styrofoam).

Landfill

Use this bin only for items that can't be reused or recycled.

Food waste no longer goes in this bin.

✓ Yes

- ✓ Broken glassware, crockery and mirrors
- ✓ Old clothing, shoes or textiles that can't be repaired or donated
- ✓ Nappies, wet wipes, kitty litter, animal droppings
- ✓ Non-recyclable plastic such as plastic bags and polystyrene



⊘ No

Electronic waste, vapes, batteries, food and garden waste, household chemicals, recyclable items, soil, building materials, food and garden waste (use your green lidded FOGO bin or communal hub).