

17016_ 28-32 ALBERT ROAD_ SOUTH MELBOURNE
SHADOW COMPARISON
27 MAY 2022

City of Port Phillip
Advertised Plan 1 of 33

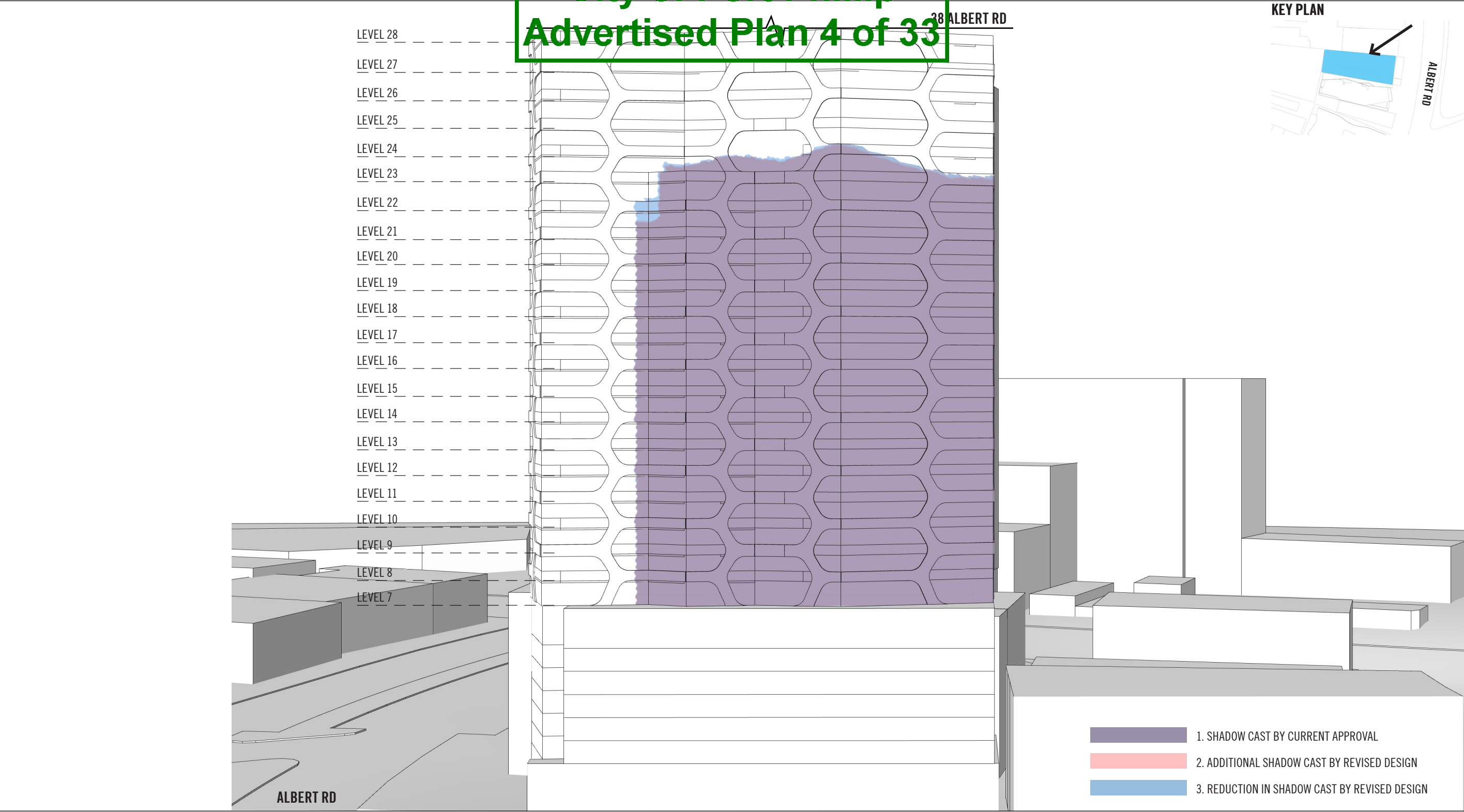
ELENBERG FRASER

**City of Port Phillip
Advertised Plan 2 of 33**

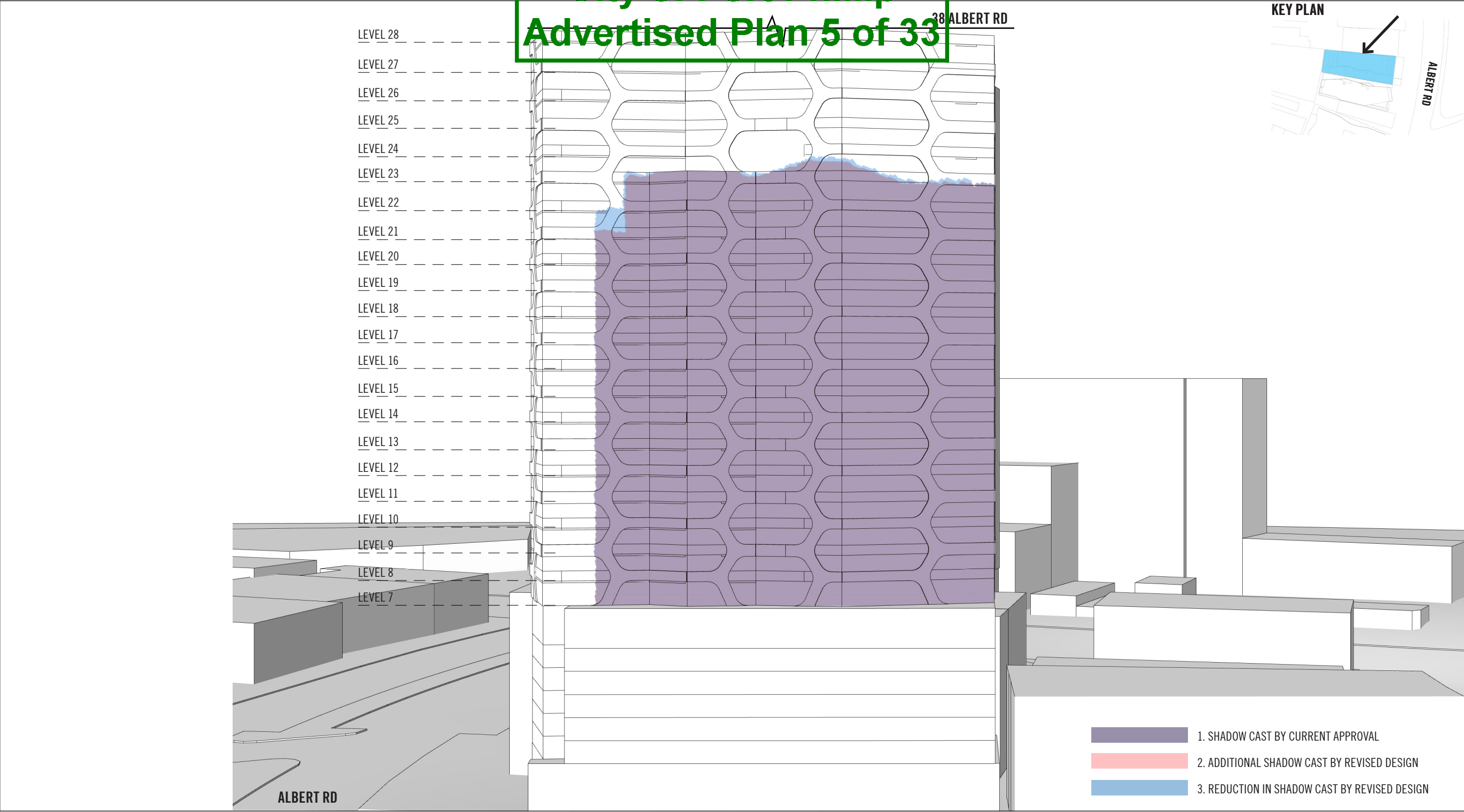
**City of Port Phillip
Advertised Plan 3 of 33**



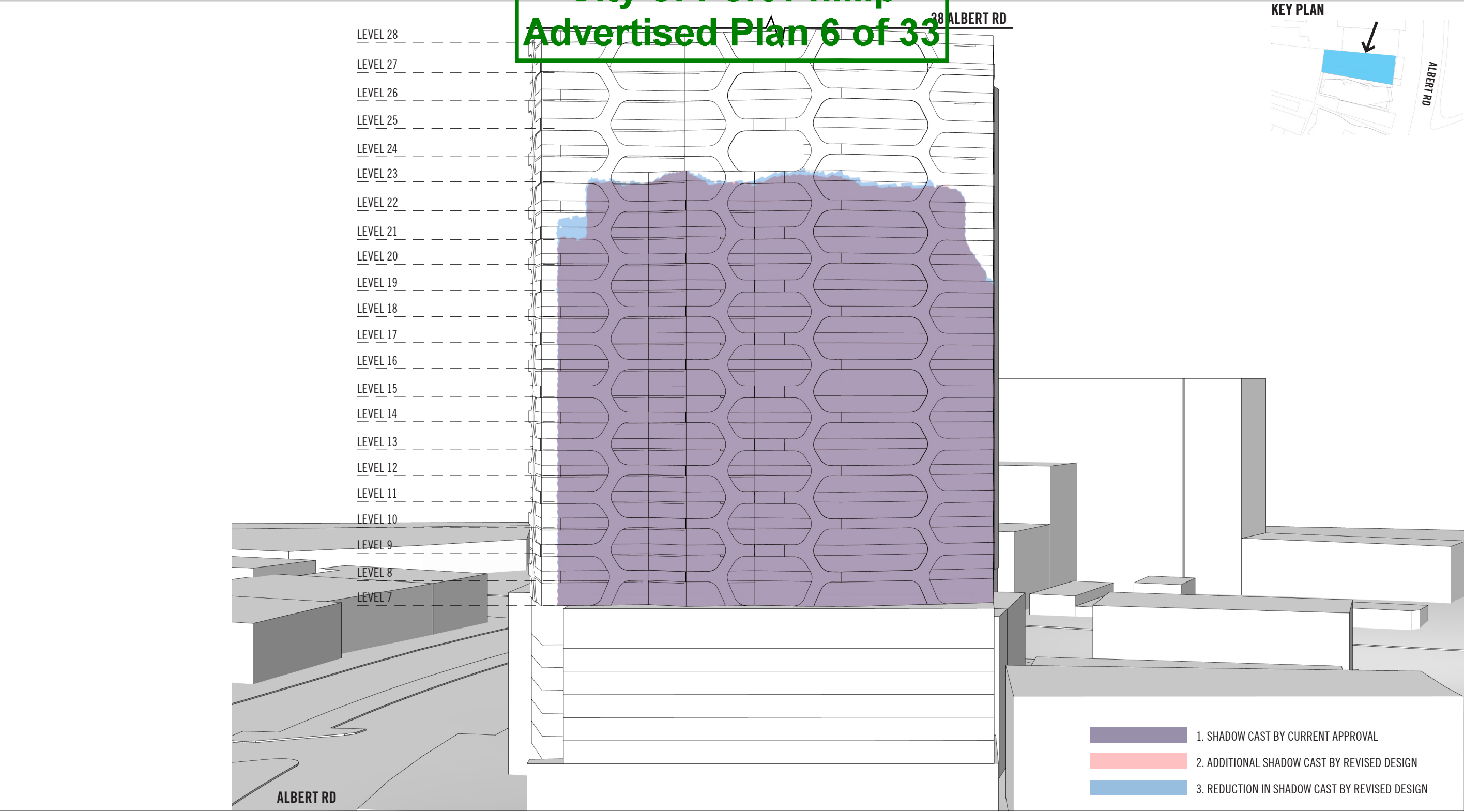
City of Port Phillip
Advertised Plan 4 of 33



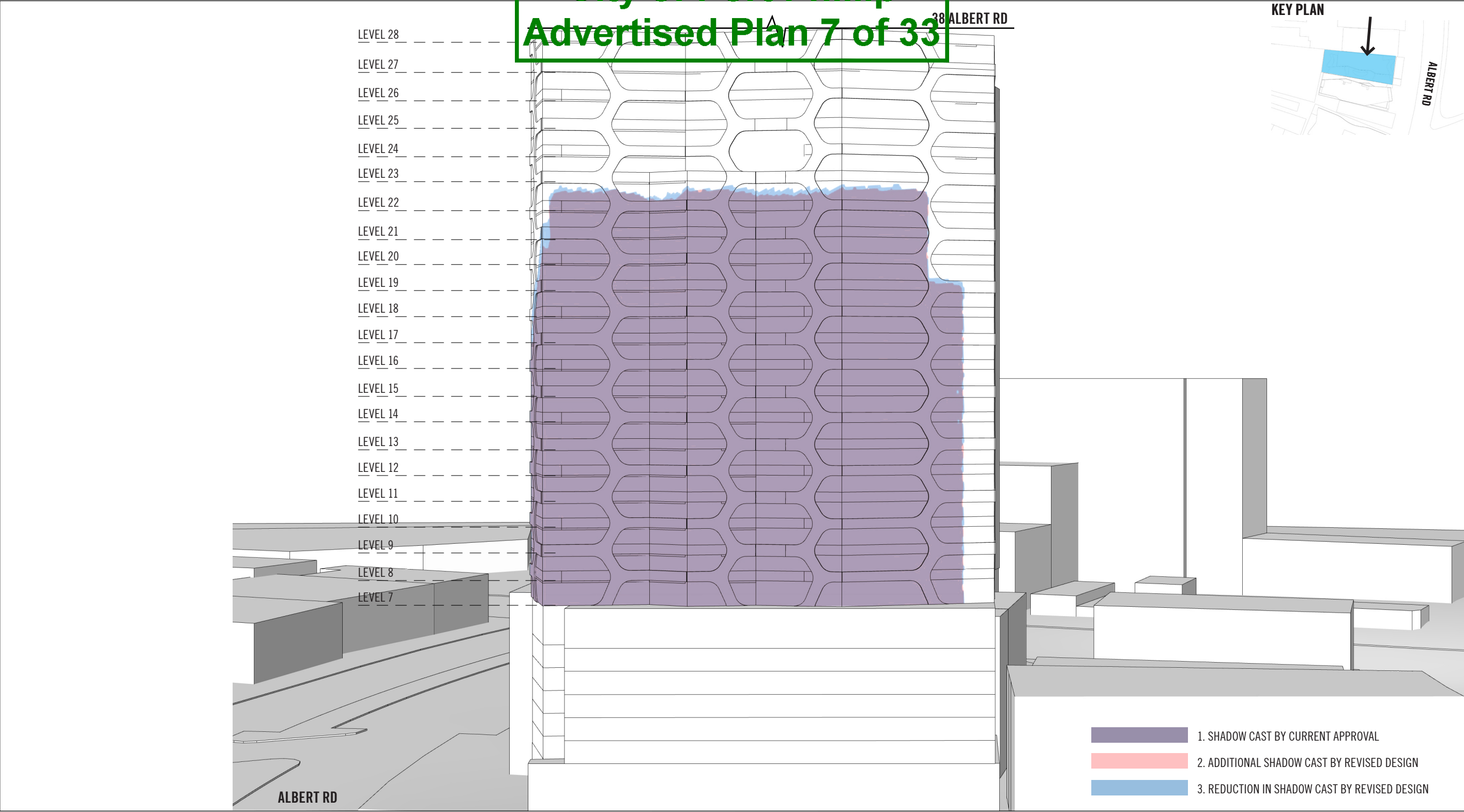
City of Port Phillip
Advertised Plan 5 of 33



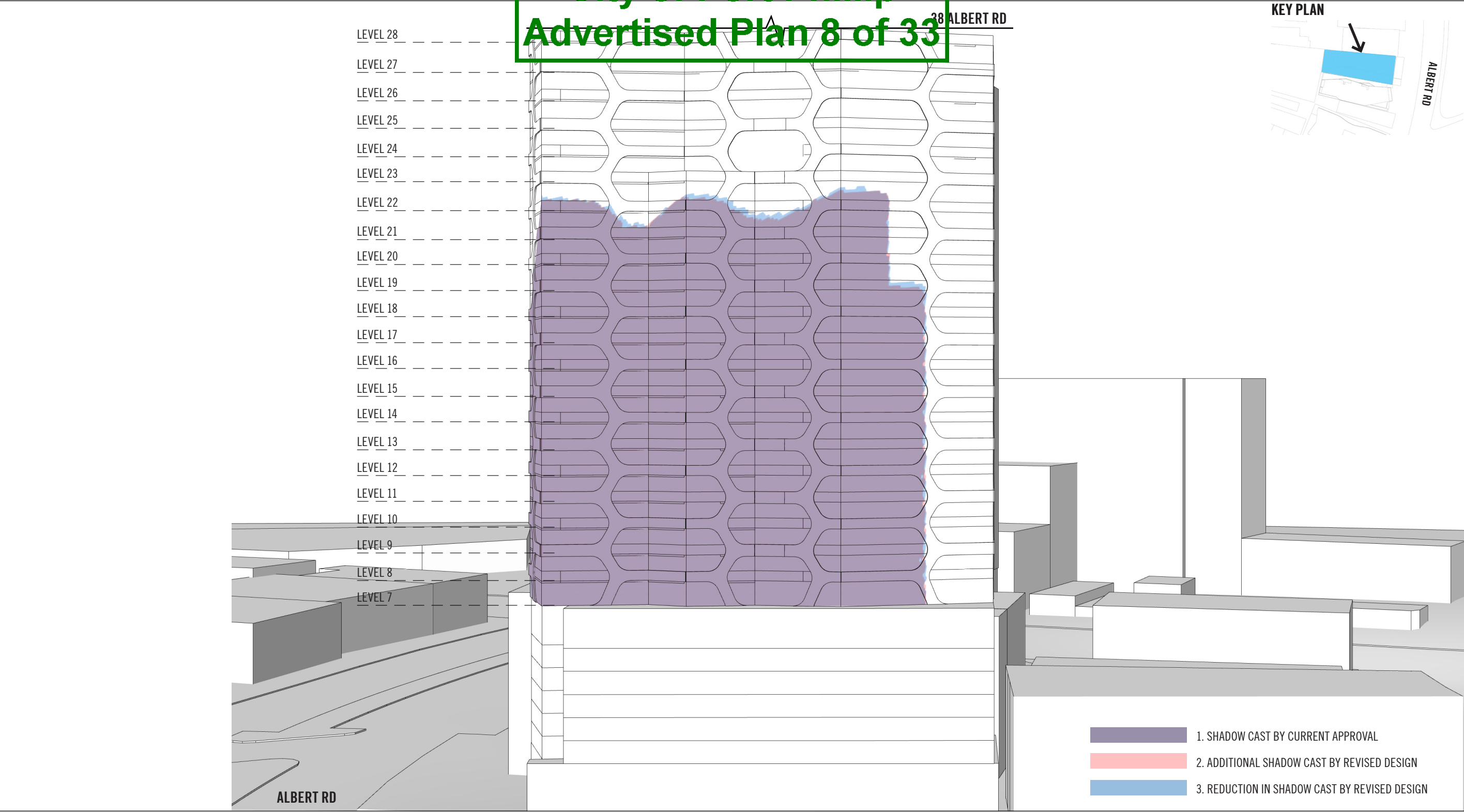
City of Port Phillip
Advertised Plan 6 of 33



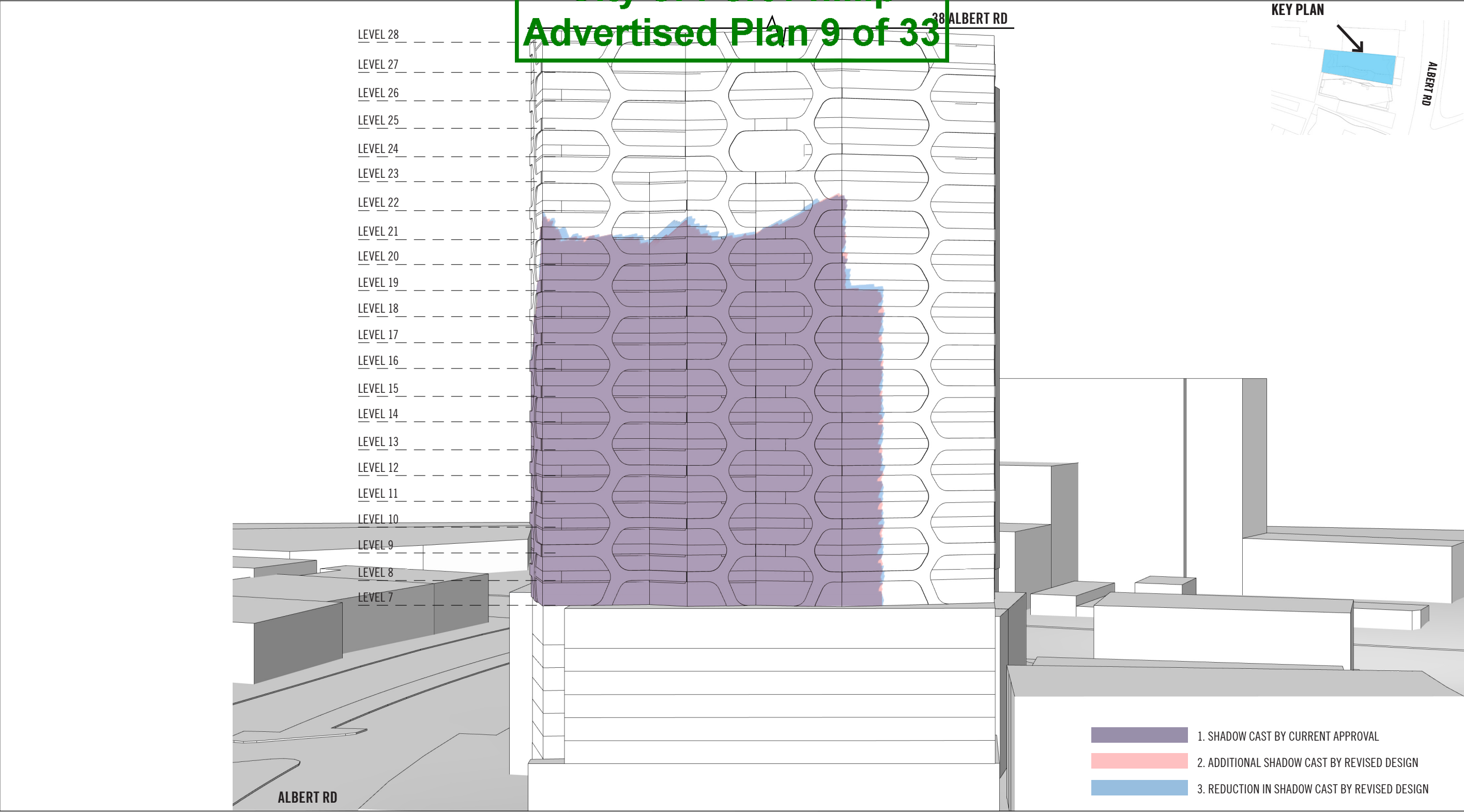
City of Port Phillip
Advertised Plan 7 of 33



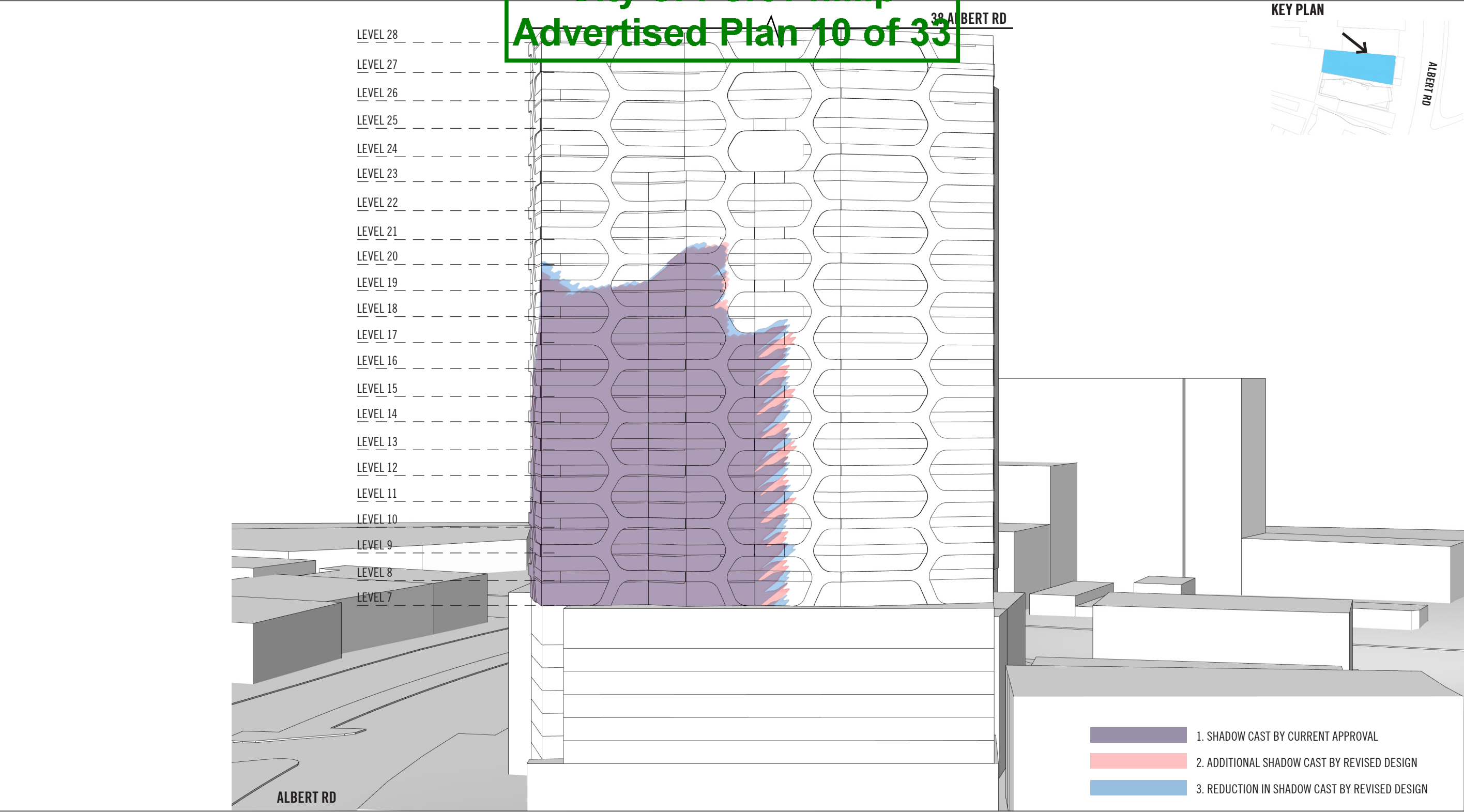
City of Port Phillip
Advertised Plan 8 of 33



City of Port Phillip
Advertised Plan 9 of 33

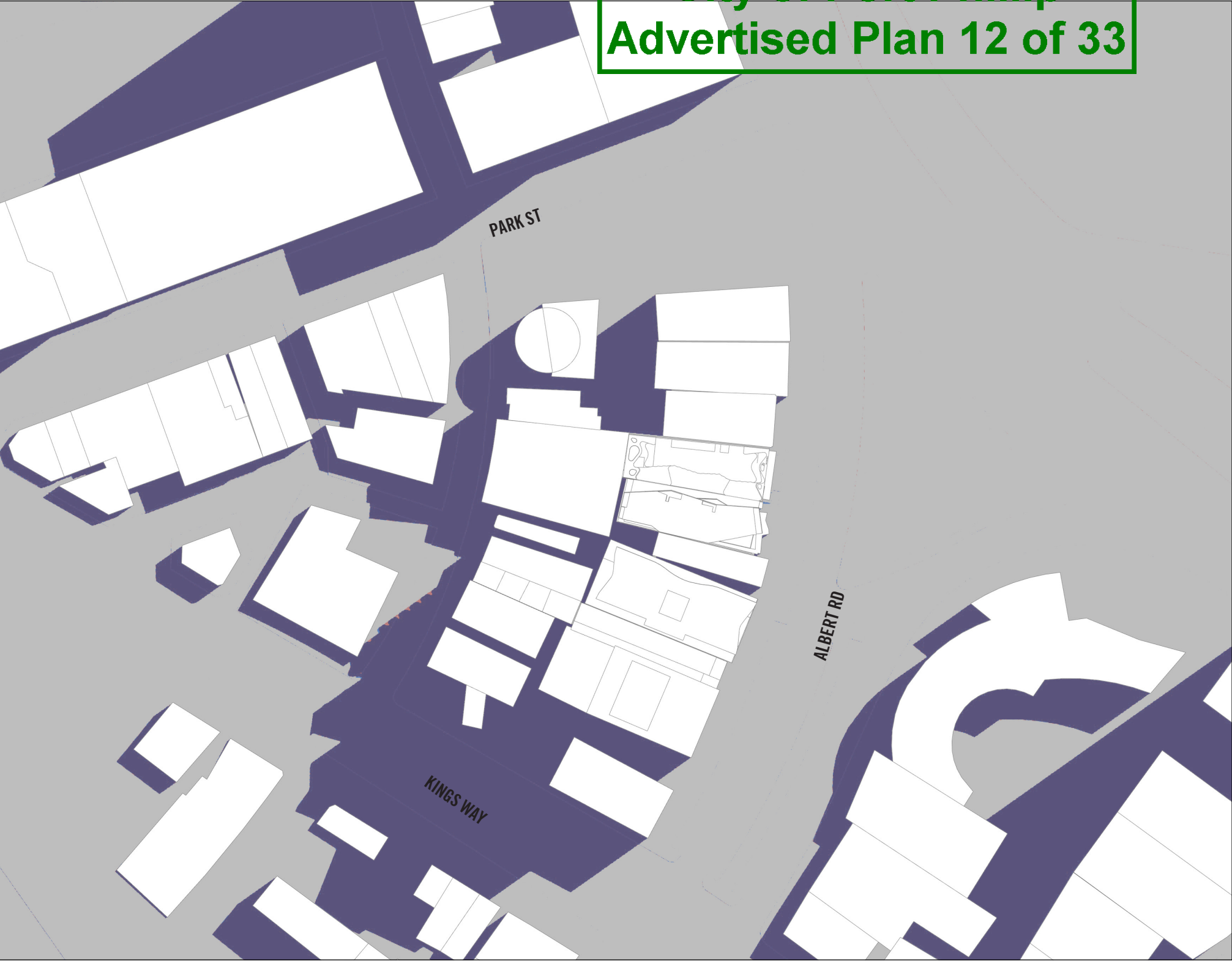


City of Port Phillip
Advertised Plan 10 of 33



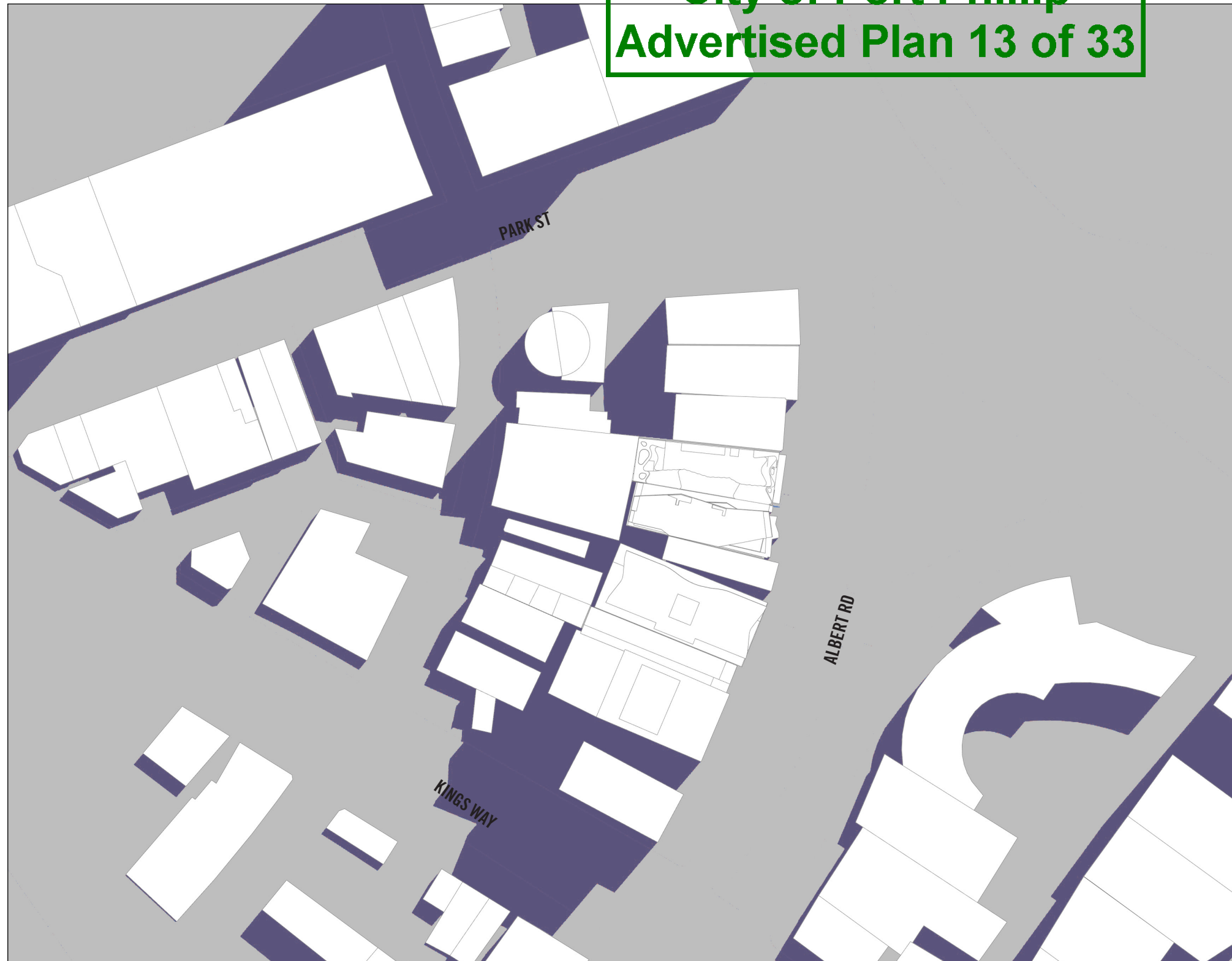
**City of Port Phillip
Advertised Plan 11 of 33**

City of Port Phillip
Advertised Plan 12 of 33



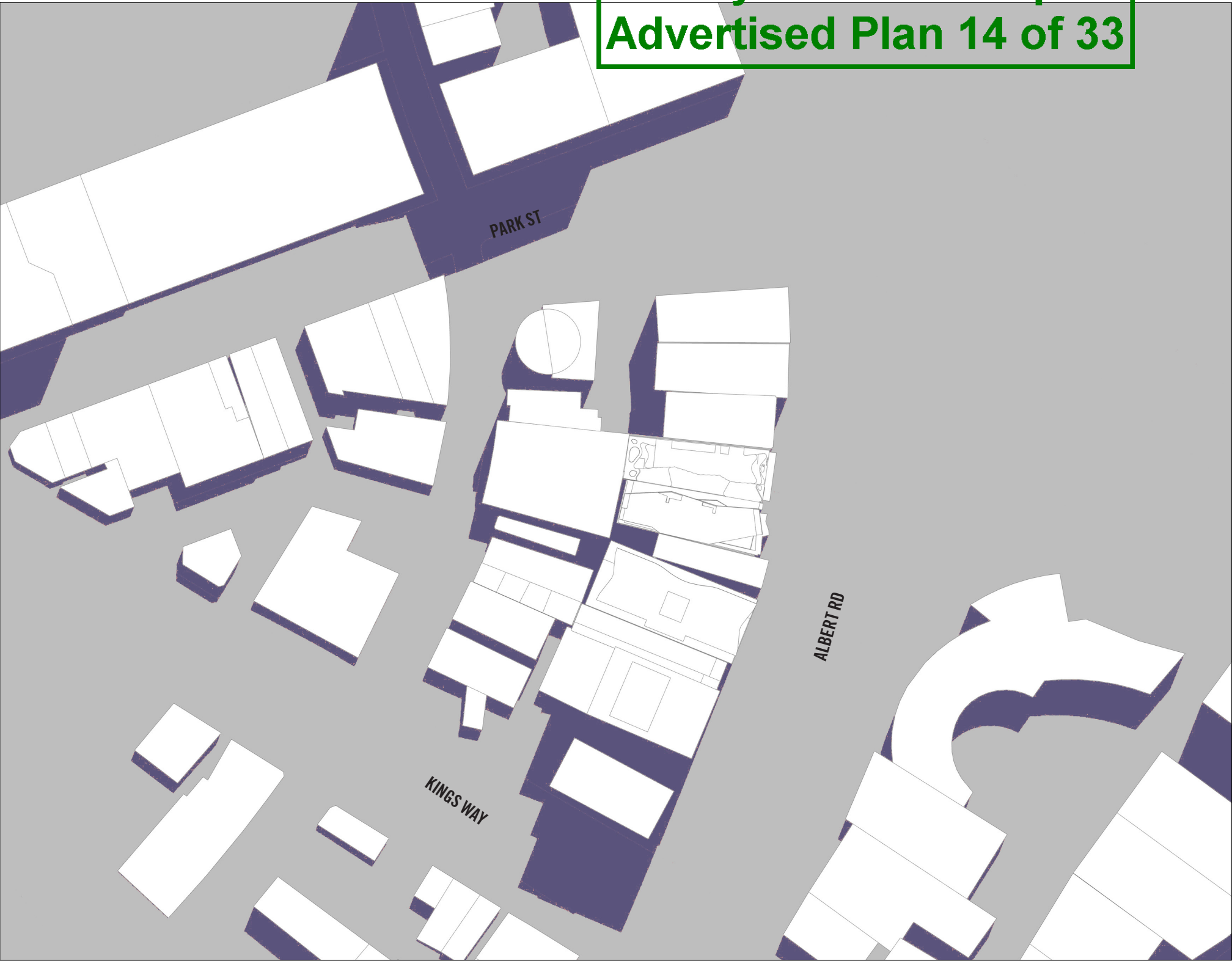
- 1. SHADOW CAST BY CURRENT APPROVAL
- 2. ADDITIONAL SHADOW CAST BY REVISED DESIGN
- 3. REDUCTION IN SHADOW CAST BY REVISED DESIGN

City of Port Phillip
Advertised Plan 13 of 33



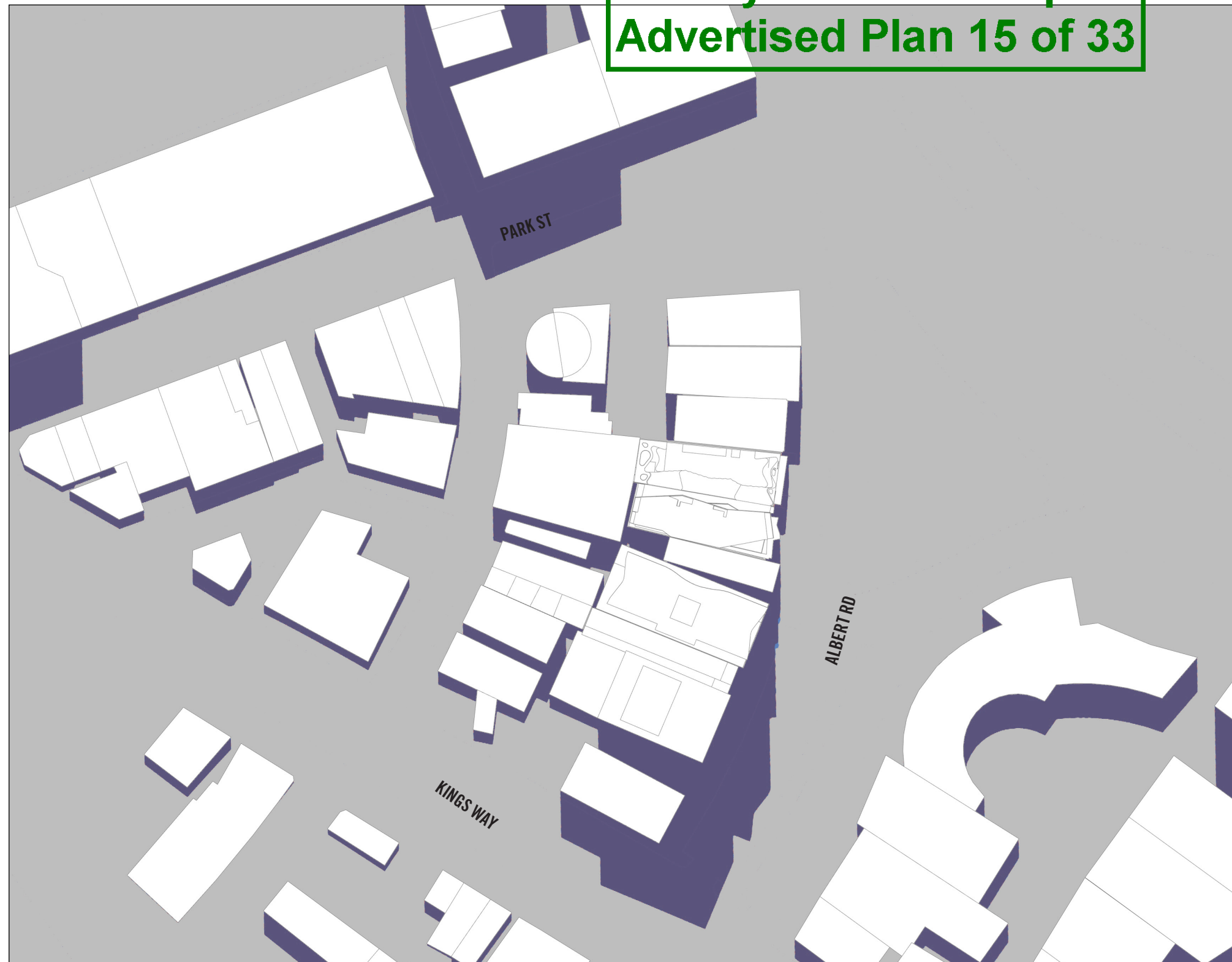
- 1. SHADOW CAST BY CURRENT APPROVAL
- 2. ADDITIONAL SHADOW CAST BY REVISED DESIGN
- 3. REDUCTION IN SHADOW CAST BY REVISED DESIGN

City of Port Phillip
Advertised Plan 14 of 33



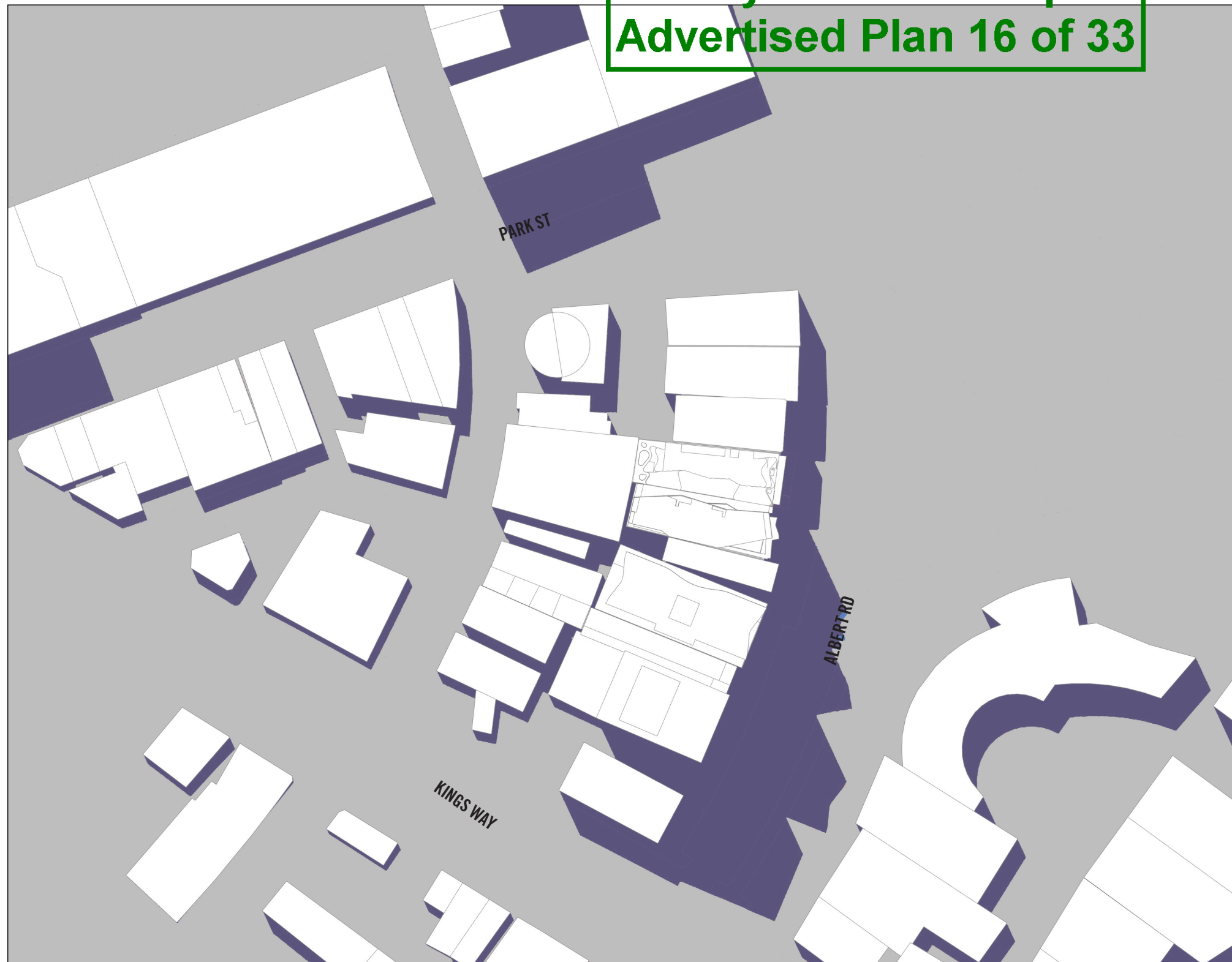
- 1. SHADOW CAST BY CURRENT APPROVAL
- 2. ADDITIONAL SHADOW CAST BY REVISED DESIGN
- 3. REDUCTION IN SHADOW CAST BY REVISED DESIGN

City of Port Phillip Advertised Plan 15 of 33



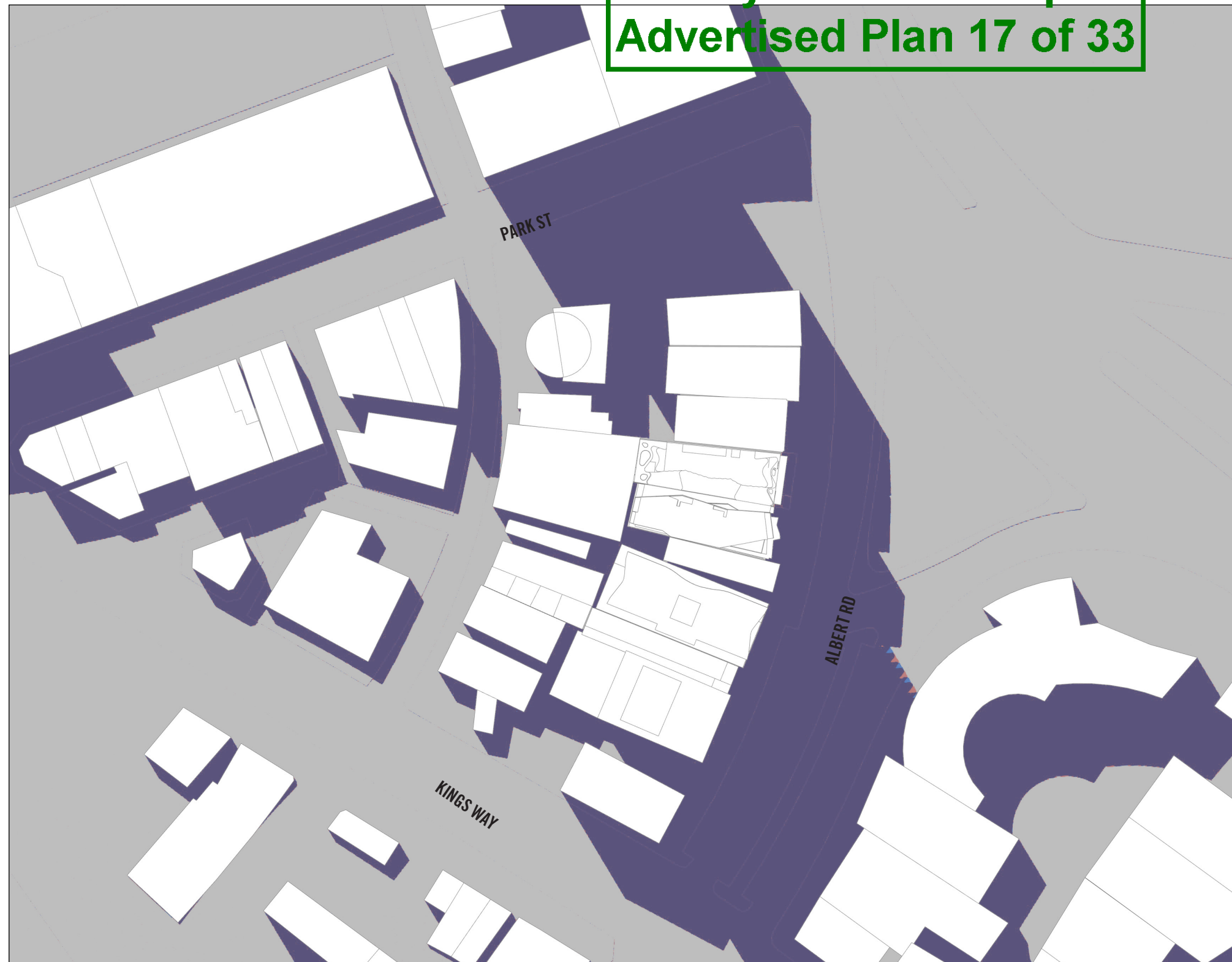
- 1. SHADOW CAST BY CURRENT APPROVAL
- 2. ADDITIONAL SHADOW CAST BY REVISED DESIGN
- 3. REDUCTION IN SHADOW CAST BY REVISED DESIGN

City of Port Phillip Advertised Plan 16 of 33



- 1. SHADOW CAST BY CURRENT APPROVAL
- 2. ADDITIONAL SHADOW CAST BY REVISED DESIGN
- 3. REDUCTION IN SHADOW CAST BY REVISED DESIGN

City of Port Phillip Advertised Plan 17 of 33



City of Port Phillip
Advertised Plan 18 of 33



- 1. SHADOW CAST BY CURRENT APPROVAL
- 2. ADDITIONAL SHADOW CAST BY REVISED DESIGN
- 3. REDUCTION IN SHADOW CAST BY REVISED DESIGN

**City of Port Phillip
Advertised Plan 19 of 33**

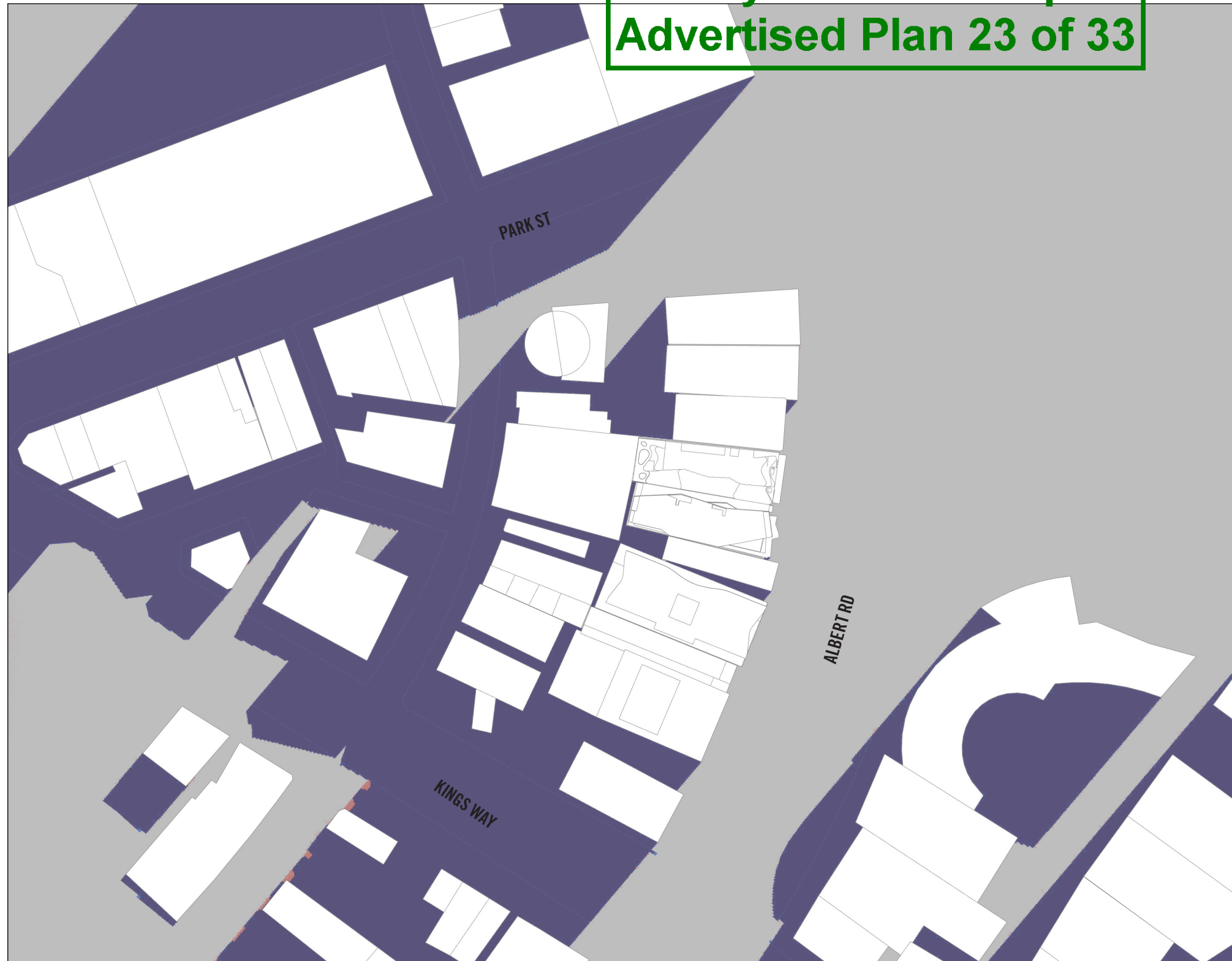
**City of Port Phillip
Advertised Plan 20 of 33**

**City of Port Phillip
Advertised Plan 21 of 33**



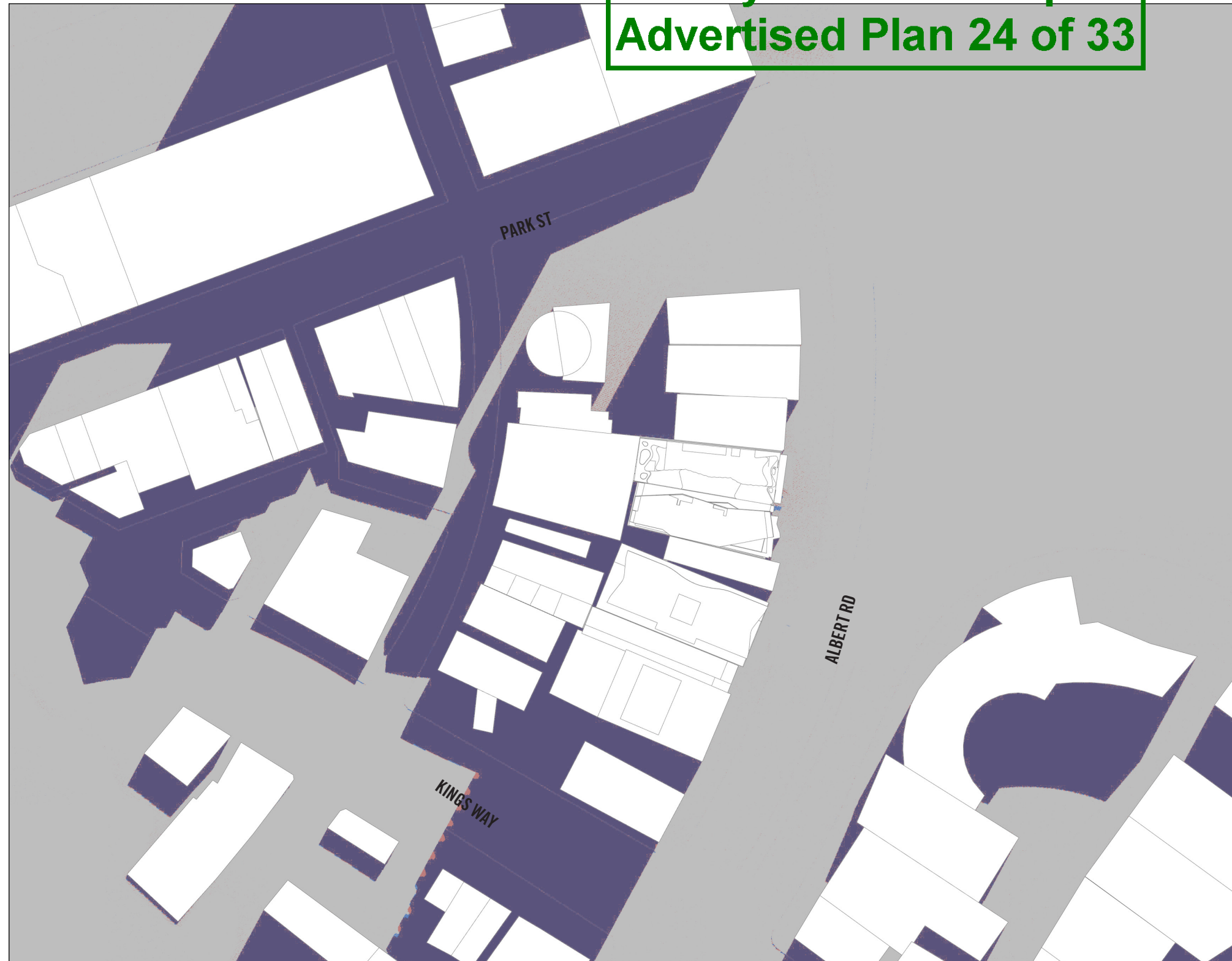
**City of Port Phillip
Advertised Plan 22 of 33**

City of Port Phillip Advertised Plan 23 of 33



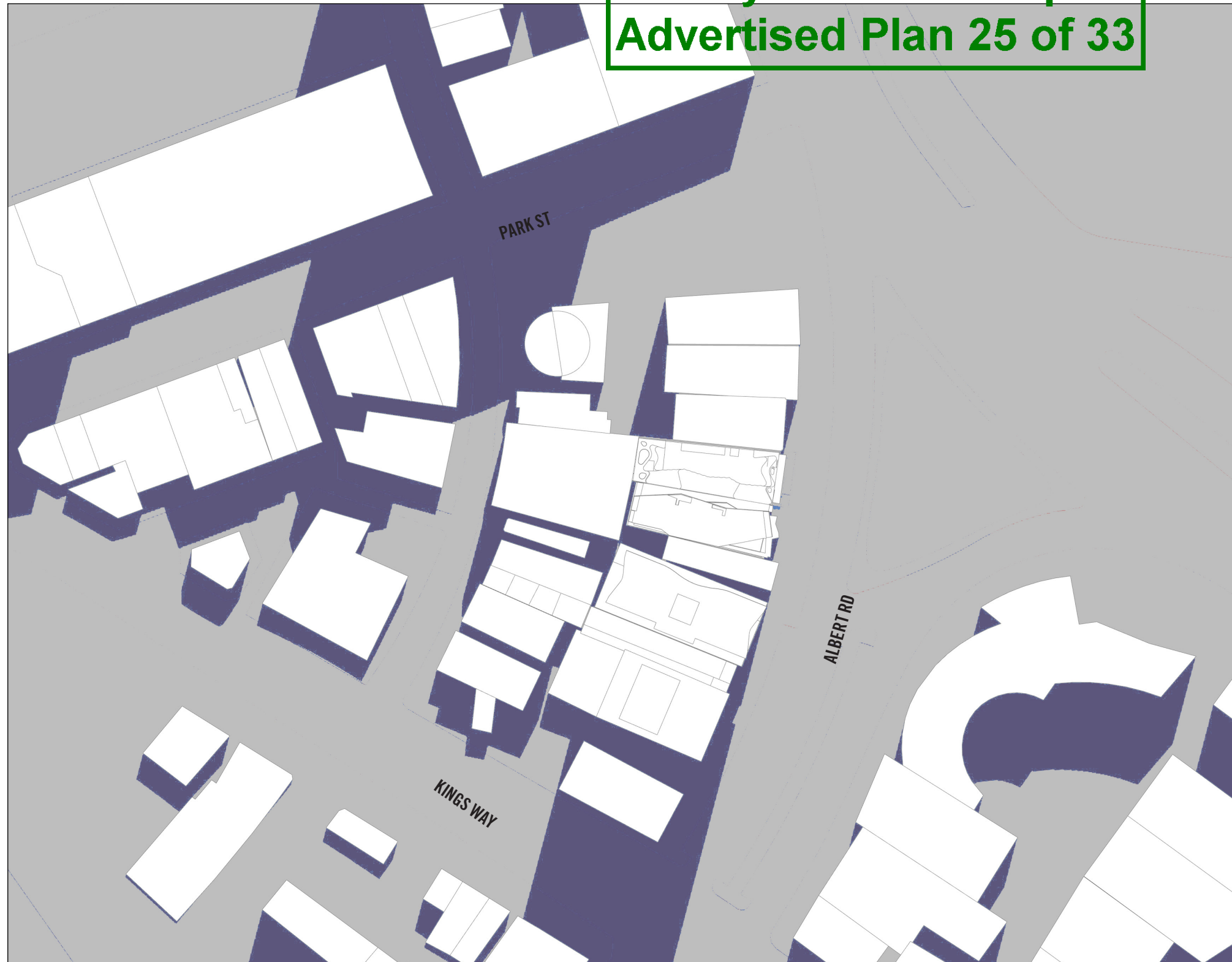
- 1. SHADOW CAST BY CURRENT APPROVAL
- 2. ADDITIONAL SHADOW CAST BY REVISED DESIGN
- 3. REDUCTION IN SHADOW CAST BY REVISED DESIGN

City of Port Phillip Advertised Plan 24 of 33



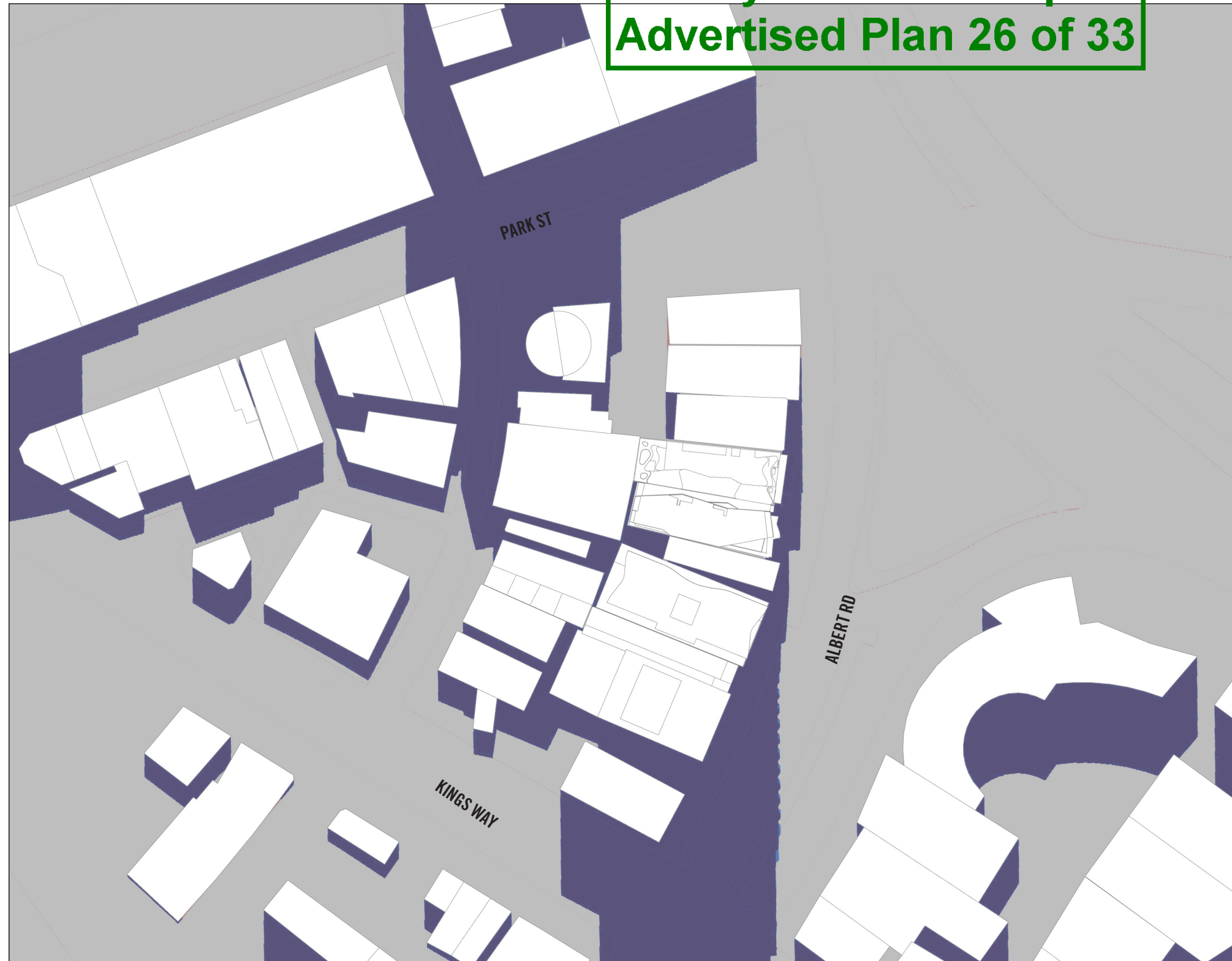
- 1. SHADOW CAST BY CURRENT APPROVAL
- 2. ADDITIONAL SHADOW CAST BY REVISED DESIGN
- 3. REDUCTION IN SHADOW CAST BY REVISED DESIGN

City of Port Phillip Advertised Plan 25 of 33



- 1. SHADOW CAST BY CURRENT APPROVAL
- 2. ADDITIONAL SHADOW CAST BY REVISED DESIGN
- 3. REDUCTION IN SHADOW CAST BY REVISED DESIGN

City of Port Phillip Advertised Plan 26 of 33



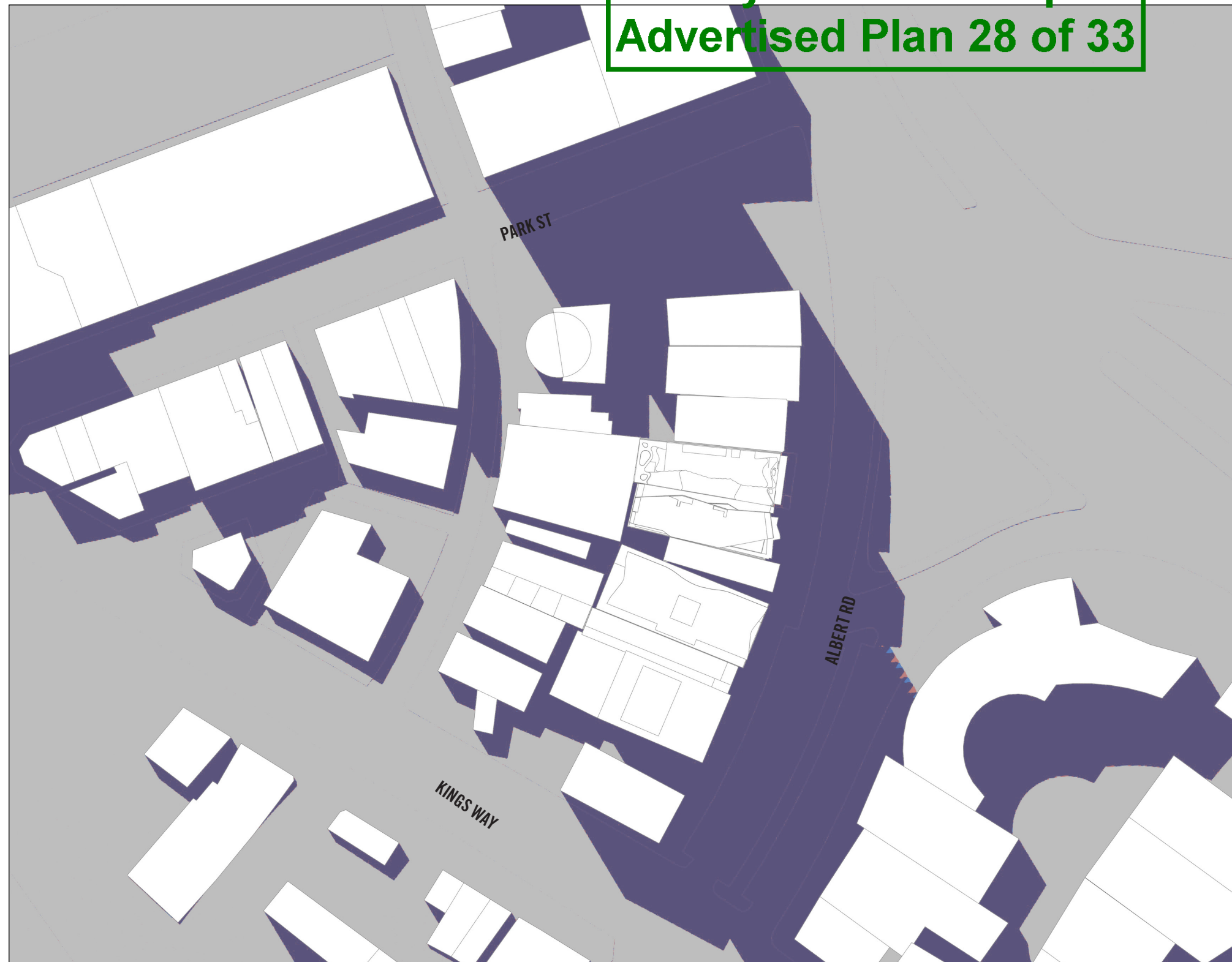
- 1. SHADOW CAST BY CURRENT APPROVAL
- 2. ADDITIONAL SHADOW CAST BY REVISED DESIGN
- 3. REDUCTION IN SHADOW CAST BY REVISED DESIGN

City of Port Phillip Advertised Plan 27 of 33

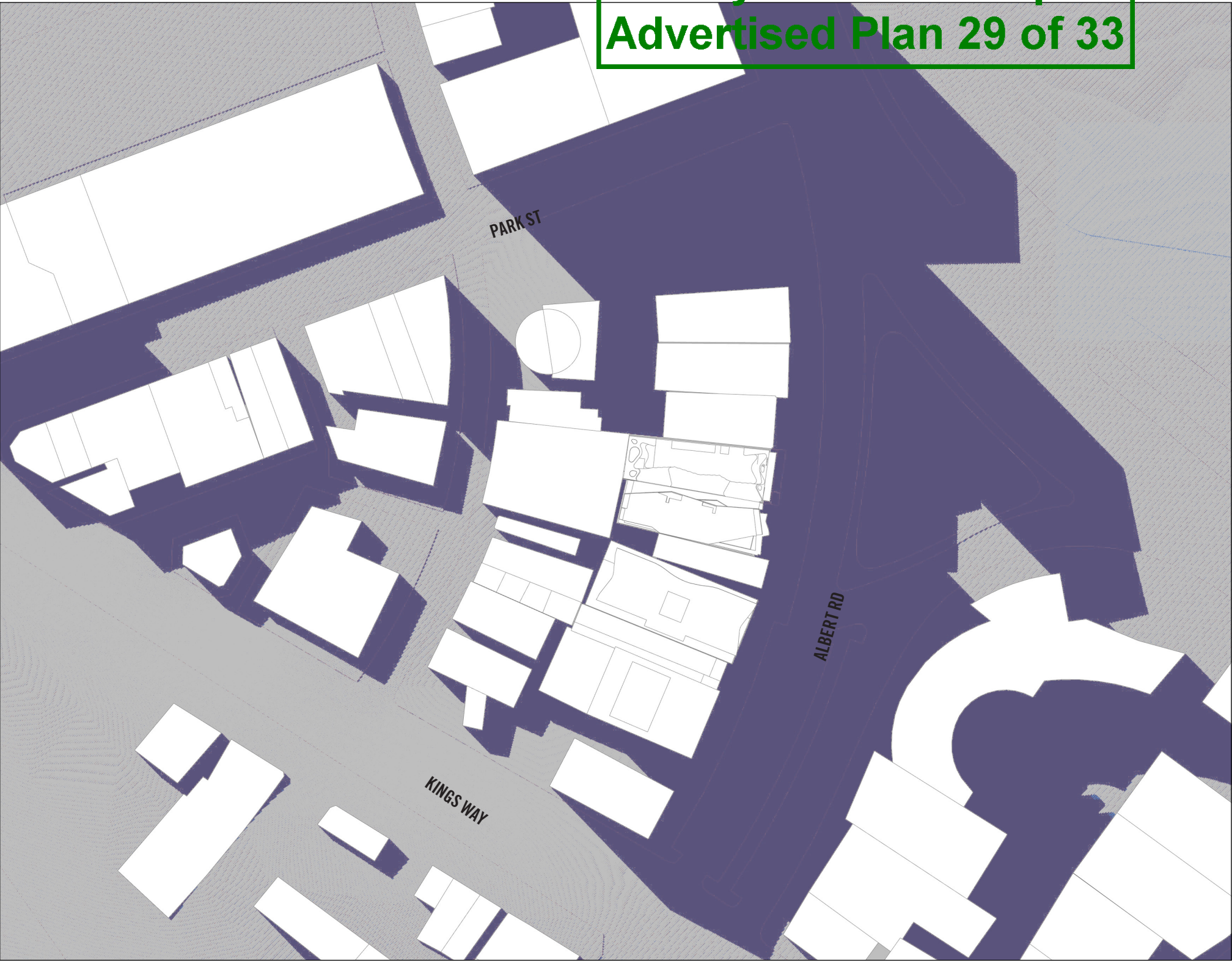


- 1. SHADOW CAST BY CURRENT APPROVAL
- 2. ADDITIONAL SHADOW CAST BY REVISED DESIGN
- 3. REDUCTION IN SHADOW CAST BY REVISED DESIGN

City of Port Phillip Advertised Plan 28 of 33



City of Port Phillip
Advertised Plan 29 of 33



- 1. SHADOW CAST BY CURRENT APPROVAL
- 2. ADDITIONAL SHADOW CAST BY REVISED DESIGN
- 3. REDUCTION IN SHADOW CAST BY REVISED DESIGN

**City of Port Phillip
Advertised Plan 30 of 33**

**City of Port Phillip
Advertised Plan 31 of 33**

City of Port Phillip Advertised Plan 32 of 33

ELENBERG FRASER
LEVEL 1, 160 QUEEN STREET MELBOURNE
VICTORIA 3000 AUSTRALIA

MELBOURNE	BRISBANE	SYDNEY	HO CHI MINH CITY
+61 3 9600 2260	+61 7 3221 8999	+61 2 9600 8455	+84 8 3827 3718
MAIL@ELENBERGFRASER.COM			
WWW.ELENBERGFRASER.COM			

ELENBERG FRASER RETAINS THE COPYRIGHT AND INTELLECTUAL PROPERTY RIGHTS IN RELATION TO ALL THE DESIGN, DRAWINGS, SCHEDULES AND OTHER MATERIALS PREPARED FOR THE PROJECT AND CONTAINED HEREIN. THIS DOCUMENT IS ISSUED FOR GUIDANCE ONLY. IT IS TO BE VIEWED WITH REGARD TO THE SPECIFIC PURPOSE OF THE ISSUE WHICH IS FOR PRELIMINARY FEASIBILITY PURPOSES ONLY. AS AN UNCONTROLLED DOCUMENT, ELENBERG FRASER ACCEPTS NO RESPONSIBILITY FOR ALTERATIONS BY PERSONS ONCE ISSUED.

THE INFORMATION CONTAINED HEREIN IS BELIEVED TO BE CORRECT AT THE TIME OF PREPARATION HOWEVER IS NOT GUARANTEED. RECIPIENTS MUST RELY ON THEIR OWN ENQUIRIES TO SATISFY THEMSELVES IN ALL ASPECTS. ELENBERG FRASER ACCEPTS NO DAMAGES, LIABILITIES OR COSTS, INCLUDING LEGAL COSTS OF DEFENCE, ARISING FROM CHANGES MADE BY ANYONE OTHER THAN ELENBERG FRASER OR FROM REUSE OF THE INFORMATION CONTAINED HEREIN WITHOUT PRIOR CONSENT OF ELENBERG FRASER.

BY ACCEPTING AND UTILIZING ANY FORM OF DESIGN, DRAWINGS, SCHEDULES OR OTHER MATERIALS PREPARED FOR THE PROJECT, THE RECIPIENT COVENANTS AND AGREES THAT ALL SUCH INFORMATION ARE SERVICES OF ELENBERG FRASER, WHO SHALL BE DEEMED TO BE THE AUTHOR AND SHALL RETAIN ALL COMMON LAW, STATUTORY LAND AND OTHER RIGHTS, INCLUDING COPYRIGHTS AND INTELLECTUAL PROPERTY RIGHTS AS DEFINED UNDER THE COPYRIGHT ACT 1968, OR OTHERWISE AT LAW.

© 2017 ELENBERG FRASER PTY LIMITED

