



# Walk and Wheel Report 2024



# Ride2School Day

## What is Ride2School day?

National Ride2School Day is held annually in March. Council works with the event organiser, Bicycle Network, and partners with local schools to encourage students to ride to school on the day of the event.

### In 2024,

- 12 schools participated
- 2 brand new bikes and helmets given to students

Councillor Sirakoff presented a brand new bike and helmet to a student of Middle Park Primary School.



81%

of students at South Melbourne Park Primary School rode or walked on the day

88%

students at St Kilda Park Primary School rode or walked on the day

In 2024, the City of Port Phillip partnered with 12 schools to deliver programs that encourage young people to get around by walking, riding, and scooting.

We worked closely with our school communities to trial new initiatives to increase space for walking, riding and play and support active travel as a popular, safe and easy travel choice.



Over 300 smoothies were made by students on Council's pedal powered smoothie bike during visits at participating schools.

St Mary's Primary held a helmet decorating competition, attended by Councillor Crawford



St Kilda Primary Ride2School Day



# Healthy Tracks to School

## What is Healthy Tracks to School?

Healthy Tracks to School is a program that enables Council to work with schools to identify, audit and make changes on popular routes to and from schools.

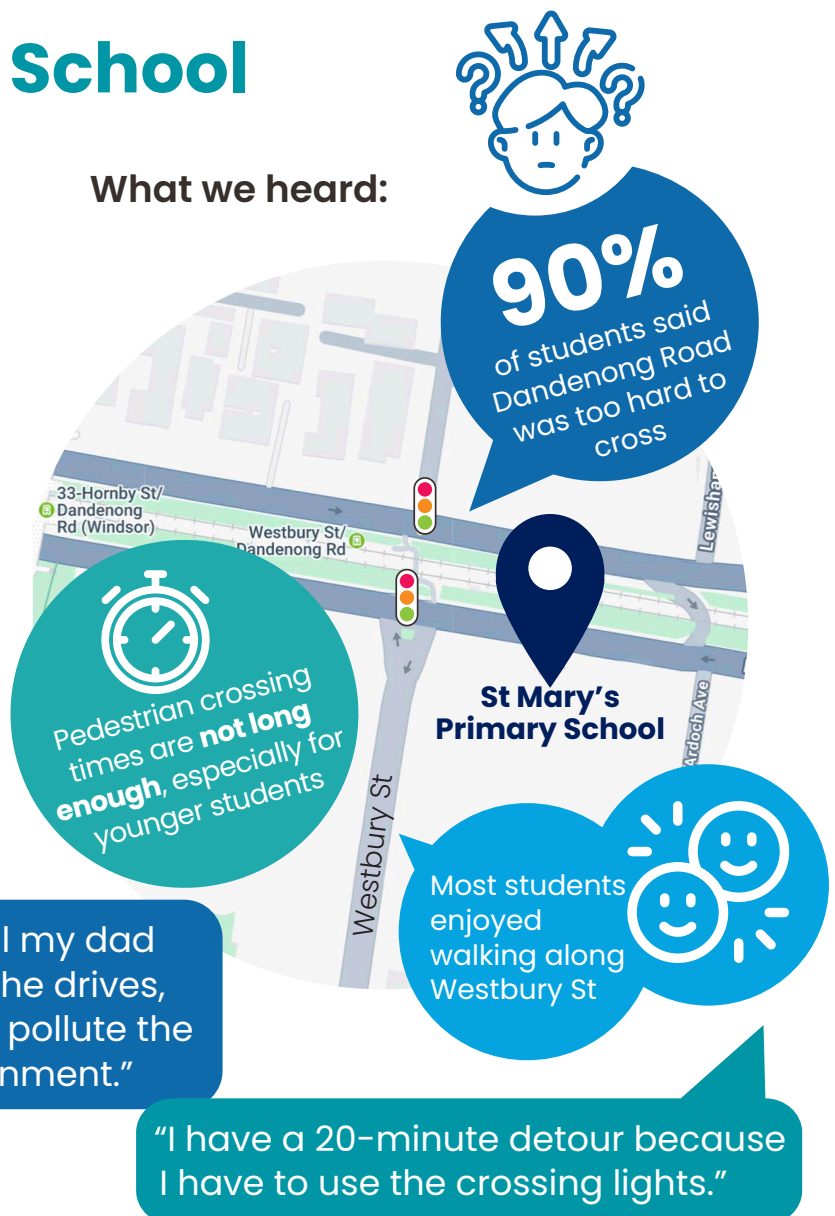
Throughout 2024, Council worked with the students, teachers and parents at St Mary's Primary School and consultants at the Institute for Sensible Transport to complete a Healthy Tracks to School audit.

Through our engagement with the school community, we better understood travel patterns, safety issues and barriers to using active transport which we will use to develop programs and infrastructure improvements.

## How we engaged:

- **122 survey responses** from the school community
- Approximately **100 students engaged** through workshops

## What we heard:

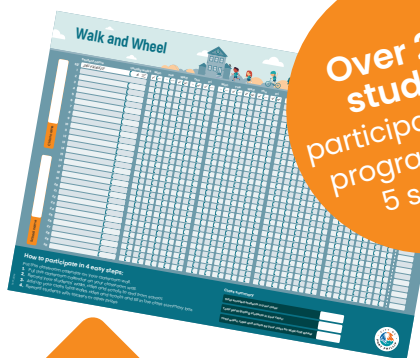


# Walk and Wheel

## What is Walk and Wheel?

In 2024, Council launched the new Walk and Wheel program which replaced Walk2School Month.

The Walk and Wheel program allows for Council to partner with schools to run programs that encourage students to use active and sustainable travel to get to and from school. Schools can participate in either the four-week program, two-week program or a one-off event.



Over 2000 students participated in the program across 5 schools.

1000 students across 3 schools tracked their commutes using our Walk and Wheel Trackers during a four week long program.

Students were celebrated as Active Travel Champions if they walked, rode, scooted or took public transport every day of the longer programs (2-4 weeks). We awarded prizes to:

- **111 new active travel champions** at Albert Park Primary
- **50 new active travel champions** at Elwood Primary
- **79 new active travel champions** at St Kilda Park Primary

**59%** of trips to and from school at St Kilda Park Primary were active or sustainable during the program

**70%** of trips to and from school at Albert Park Primary were active or sustainable during the program

As part of Walk and Wheel, Dr Cranky's bicycle hospital visited St Kilda Primary.

- 38 repairs to students and parents bikes
- 5 bikes given out to the school community



## Open Streets

### What is an Open Street?

An Open Street involves opening streets adjacent to schools to students to walk, ride and play directly before and after school.

Across three dates in June, we worked with Bicycle Network to trial an Open Street at Middle Park Primary. Neville Street was opened to students walking, riding, scooting and playing with parents who drive asked to park on nearby Wright Street instead.

By making Neville Street free from cars, we reduced safety issues near the school entrance created by dangerous turning movements and parking behaviours.

**80%** of people said that they felt safer using Neville Street during Open Street days

### What students said they liked:

"There's more space to ride my bike."

"Riding without having to worry about traffic."

### What parents said:

"It's a wonderful initiative that adds value to the village like living that is unique to our schools location."

### For more information:

📞 ASSIST 03 9209 6777

✉️ [schooltravel@portphillip.vic.gov.au](mailto:schooltravel@portphillip.vic.gov.au)



/ proudly port phillip