



DIVERCITY

December 2024



FROM THE
CHAMBER



CITY NEWS



ARTS IN
FOCUS



SHAPE
OUR CITY



SUSTAINABILITY



LIBRARY
VISIT



COMMUNITY
SPIRIT



WHAT'S ON

From the Chamber

I had assumed my last Divercity column for 2024 would be full of the year's highlights and well wishes for the holiday period.

Instead, we are collectively in shock at the devastating terror attack impacting the Adass Israel synagogue in Ripponlea and the shattering impact on our Jewish community and Ripponlea residents and traders.

I was privileged yet saddened to be onsite with members of the Adass congregation on the Friday of the attack and have been incredibly saddened by the pointless waste and pain and suffering that I witnessed.



Our diverse community is what makes us strong and the Jewish heritage in Ripponlea, Balacava and elsewhere throughout Port Phillip is an intrinsic part of our character and culture. Wars in foreign countries are never an excuse for antisemitism – or any type of racism here in Melbourne and I was proud that our Council unanimously passed a motion at our last Council meeting for the year, condemning the attack, reaffirming our support and decrying the increase in antisemitism witnessed since 7 October 2023.

The Adass community will rebuild and we are stronger together, but I cannot shy away from the fact that this is a horrible way to end the year – and makes it difficult for me to focus on the many achievements by our Councillors and Officers.

In stepping away from Ripponlea, we obviously end 2024 a brand new Council and I feel confident that we are starting to find our feet and work well collectively. Also passed unanimously last week was a motion detailing a new approach to Community Safety which I know is an issue paramount to many in our community.

The summer period is a time of socialising, reflection and coming together and there is no better place than Port Phillip to do that. Whether it's attending one of our many events or festivals; or

dining out at our exceptional restaurants. Make sure you consider supporting local when arranging your festive plans and support our traders, music venues, retailers and arts organisations.

Despite shaken, I am ready for the challenges ahead in 2025 and promise to lead our community with compassion and integrity. Till then, I wish all of you and your loved ones a happy and safe festive season.

Proudly Port Phillip

Cr Louise Crawford

Mayor, City of Port Phillip



St Kilda Pier reopens: A new chapter for an iconic landmark

The St Kilda Pier redevelopment is now complete, with the newly renovated pier officially open to the public after two years of extensive upgrade works by the Victorian Government.

The transformation of the iconic pier includes a spectacular curved walkway, tiered seating, additional toilets, and a new community space near the famous St Kilda Pier Kiosk.

The 450-metre-long pier offers a safer, more accessible space for residents and tourists, with incredible views of the city skyline and the bay.

Works to remove the old pier have now commenced and expected to take six months. During this time, access to the low landing will remain closed.

The reopening coincides with an announcement by the Federal Government to help fund our plans to upgrade the foreshore precinct surrounding St Kilda Pier, as well as the St Kilda Adventure Playground Upgrade under its Thriving Suburbs funding program.

Both of Council's submissions to the Thriving Suburbs funding program were successful, securing more than \$3.6 million for two key infrastructure projects. These grants include:

\$2.6 million for the St Kilda Pier (Landside) Foreshore Upgrade Stage 2

This funding will enable the next stage of works to extend the pier, foreshore, and promenade to connect with Jacka Boulevard.

Stage 2 of the redevelopment project will create a safer and more accessible space for pedestrians and cyclists by linking Jacka Boulevard to the new pier and foreshore precinct. This upgraded space is set to welcome hundreds of thousands of visitors each year.

\$1.02 million for the St Kilda Adventure Playground Upgrade

This funding will support our plans to upgrade the St Kilda Adventure Playground, making it more accessible and better suited for community needs. The improvements will focus on accessible play infrastructure, fostering stronger community cohesion and liveability.

Construction is expected to begin in mid-2025, with a community celebration event planned to farewell the old playground equipment.

Additionally, the Australian National Memorial Theatre Ltd was awarded \$591,924 in funding to revitalise the historic [National Theatre](#) in St Kilda.

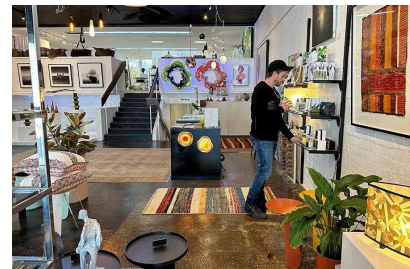
This project will include upgrades to seating, lift, lighting and amenities to improve safety and accessibility. It will also support the local arts community, from ballet and drama schools to amateur and professional theatre, enhancing civic pride and encouraging greater community participation.

The Federal Government's Thriving Suburbs Program is a targeted initiative aimed at improving community spaces, boosting local economies, and enhancing the quality of life in suburban areas.

City News

Storehouse now open on Inkerman Street

Storehouse, a stunning new creative hub, has opened in a former mechanic's workshop on Inkerman Street. With two galleries, a food store, on-site artist studios, and a sprawling retail space showcasing works by local artists and makers, it is dedicated to celebrating local, ethical, and sustainable creativity.



Unique items from established and acclaimed artists

Storehouse is a treasure trove of local makers. Explore three levels of retail space and pick up hand-made, locally designed and ethically made clothing, accessories, furnishings, homewares, lighting, and fine art. A gorgeous ground-floor showroom has a curated selection of custom-made items from local designers and makers, products from small Melbourne businesses and the occasional vintage treasure. Bespoke items from many acclaimed and notable artists [are stocked here](#). These include the distinctive glass installations from [Leisa Wharington](#) and upcycled

sculptures crafted from discarded vintage items from cult-favourite [Kitty Calvert](#), creations of Julia Brampton and Phill Calvert (ex-Birthday Party). They are also stockists for custom-made Melbourne furniture designers [Formacy](#) and [Proxima](#), and hand-made glass and ceramic lighting from [Illume by Design](#).

Save the date for their Christmas shopping night on Friday 6 December. Toast the season over a glass of sparkling, and pick up unique gifts for friends and family.

Gallery spaces and exhibitions

Be sure to explore the two gallery spaces, also on the ground floor, when you visit. With a rotating program of exhibitions by Victorian artists, there's always something new to discover.

The larger gallery space showcases work from a stable of artists represented by Storehouse Founder Thomas Burge, with room to accommodate larger paintings and major works. A smaller corner space, available for monthly exhibitions, features displays by emerging artists.

Visit on Friday 6 December for the launch of [Gifts of Gippsland](#), a new exhibition celebrating of ten Gippsland-based local makers with ties to the St Kilda artistic community.

The Pantry food store

Before opening Storehouse, Burge ran Koonwarra Store in Gippsland. He continues to champion local produce from the region and beyond at The Pantry, Storehouse's on-site food store which stocks boutique producers from around Victoria.

Browse the delicious range of [BoatShed Cheese](#) from the Mornington Peninsula, shaped, ashed, marinated, and aged by hand. Shop for small-batch, traditionally made chocolate from [Cuveé Chocolate](#), and olive oil, pastes, and soaps from sustainable olive grove and lavender farm [Chasney Estate](#). Handcrafted dining utensils by woodturner Guilio Marcolongo including cheese knives made from Huon Pine and Blackwood, and cake servers made from Australian hardwood, make perfect gifts for the foodie in your life.

Jarra Karalinar Steel named 2024 Rupert Bunny Fellowship recipient

Jarra Karalinar Steel is the 2024 recipient of the City of Port Phillip's Rupert Bunny Foundation Visual Arts Fellowship.

The Fellowship grants a \$30,000 acquisitive award to support professional development and excellence in contemporary visual art.

A multi-disciplinary artist based in St Kilda, Ms Steel is a descendant of the Yaluk-ut Weelam clan of the Boonwurrung.

Recently coming off her three year tenure as curator for Rising Melbourne Art Trams and a current resident of the Council managed Shakespeare Grove Artist Studios, she is recognised for her powerful poster art, large-scale public installations, LED Wurrung works, augmented reality, digital art, video games, emu egg engravings and commemorative signage.

"The Rupert Bunny Foundation Visual Arts Fellowship presents a profound opportunity for my professional development as an artist, particularly within the context of the City of Port Phillip, which sits on the traditional lands of my ancestors, the Yaluk-ut Weelam people," Ms Steel said.

She will use the Fellowship funding to research and create Yawa: Journey Towards Blak Futures,



a body of work exploring the three themes of Blak Futurism, Cultural Revitalisation and Environmental Stewardship, all informed by her Yaluk-ut Weelam heritage.

“By engaging with my Elders and integrating their knowledge, the project will produce a major body of work that envisions alternative futures rooted in First Peoples perspectives,” she said.

Blak Futurism involves creating artworks depicting futuristic scenarios where Indigenous culture and technology co-exist harmoniously, presenting a vision of the future that is both innovative and deeply rooted in tradition.

The Cultural Revitalisation theme will be explored through artworks incorporating traditional symbols, materials and techniques, reimagined in modern contexts to highlight their ongoing relevance and vitality while Environmental Stewardship artworks will emphasise sustainable practices and the Indigenous worldview of living in balance with nature.

Ms Steel will donate a significant piece from the Yawa series to the City of Port Phillip collection to deepen the representation of First Peoples art and culture. Yawa works will be exhibited in late 2025.

Mayor Louise Crawford said: “We’re delighted to welcome Jarra Karalinar Steel as a Rupert Bunny Fellowship recipient. Her work is celebrated for its creativity and skilful inclusion of folklore from her cultural history. We can’t wait for everyone to be able to enjoy and appreciate the Yawa exhibition created during her Fellowship.”

In 1991, a fire swept through St Kilda Town Hall, destroying part of the building and its contents. A number of artworks were damaged including The Forerunners by Rupert Bunny. In the spirit of the contribution Rupert Bunny made to the visual arts, the insurance funds from this significant painting were used to establish the Rupert Bunny Foundation. The Rupert Bunny Foundation Visual Arts Fellowship followed in 2005.

EcoCentre completion in sight

Last year, we commenced construction of the new Port Phillip EcoCentre.

Once built, it will be a leading example of sustainable design and construction in Australia – producing more energy than it consumes. The building is set to be completed in March 2025.

The redevelopment will provide benefits to the EcoCentre and the thousands of community members who use its programs and spaces, including:

- an improved look and feel that balances modern and heritage elements
- a large collection of community spaces that together will be three times the size as the original building
- improved visitor and worker experience, including a reception and separated office and community spaces
- a building that meets modern accessibility standards, featuring a lift and accessible toilet
- sustainable design features – the building is designed to produce at least as much energy as it consumes, while keeping water usage to a minimum, featuring:
 - a Cross Laminated Timber (CLT) structure with a highly insulated thermal envelope
 - fully electric-powered facilities, with solar panels and energy storage onsite for minimal reliance on the grid.



This building will enable the EcoCentre to flourish and to continue its great work transforming our community's understanding of wildlife, waterways and climate change.

Why redevelop the EcoCentre?

Over the past 25 years, the Port Phillip EcoCentre has grown to deliver education, programs and services to more than 19,000 participants annually. This growth has meant the much-loved building was no longer meeting demand or fit for purpose.

This is why we teamed up with the [Department of Energy, Environment and Climate Action](#) to deliver an updated, functional and sustainable building. The finished project will improve visitor experience and access while providing a more visually appealing presence on an iconic corner of the St Kilda Botanical Gardens.

Timeline to completion

The new building was originally planned for completion in May 2024. However, a combination of factors including shortages of materials and project complexity mean that it will now be completed by late March 2025.

- After the building is finished, the EcoCentre will relocate from its temporary home at the Cora Graves Centre to the new location.
- Landscape works will then commence, and this will complete the surrounds of the building.
- A launch will then be arranged with our project partners in the Victorian Government to celebrate the opening of the new EcoCentre to the public.
- We expect the building to be open to the public in late Autumn 2025.

We look forward to sharing this purpose-built, innovative and highly sustainable building with our community once it is finished.

Council services over the festive period

With the upcoming public holidays, there are some minor changes to our services.



Changes to waste and recycling services

This Christmas, kerbside waste collections will change during Christmas week:

- There will be no kerbside waste collections on Christmas Day (25 December).
- Collections will resume on Boxing Day, 26 December. Friday's collection will occur on Saturday 28 December.

There will be no [Hard and Green waste collections](#) on Christmas Day, 25 December.

The [Port Phillip Resource Recovery Centre](#) will be closed on the public holidays: 25 December, 26 December and 1 January 2025.

Changes to service desk operating hours

The service desk at Port Melbourne Town Hall will be closed on the following days:

- Wednesday 25 December
- Thursday 26 December
- Friday 27 December
- Monday 30 December
- Tuesday 31 December

- Wednesday 1 January 2025.

The service desk at St Kilda Town Hall will be closed on the following days:

- Wednesday 25 December
- Thursday 26 December
- Wednesday 1 January 2025.
- Reduced operating hours (8.30 am to 4 pm from) will run from December 24 2024 to 3 January 2025.

Our phone contact centre will remain open at all times.

Beat the summer heat

It's officially summer and the weather is already heating up.

Sweltering and prolonged heat and heatwaves may be on the way and can be dangerous, and in some cases, life threatening.



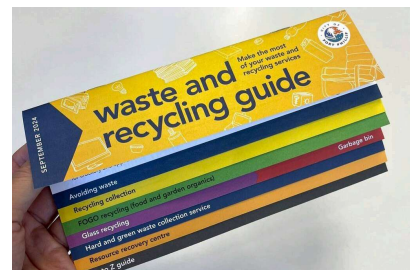
Check out our new Extreme weather – Heatwaves page for some handy tips on how to prepare for, deal with and recover from extreme heat.

Visit: <https://www.portphillip.vic.gov.au/council-services/health-and-safety/emergencies-and-extreme-weather/extreme-weather-heatwaves>

Grab your guide to waste and recycling

Looking for a quick guide to waste and recycling that will stay on your fridge?

In 2019, we produced our first paper-based guide to waste and recycling. Since then, a lot has changed, so we have updated it recently to reflect the latest information.



Inside this handy booklet, you'll find:

- Tips on avoiding waste in the first place – including information on share schemes like the Elwood Kitchen Library and repair organisations like the [St Kilda Bike Kitchen](#) and [Port Phillip's repair café](#).
- Reminders of what can and can't go in all our kerbside bins – note that some items have changed since the last version.
- Tips on glass recycling – including information on our [Communal hubs](#) and the [Victorian Contain Deposit Scheme](#).
- Instructions on how to book a free [Hard and Green Waste collection](#).
- Information on our [Resource Recovery Centre](#) – where you can drop off many items, including [e-waste](#).

It's got a magnet fixed to the back so it can be conveniently kept on your fridge for quick access.

Pick up a copy today from:

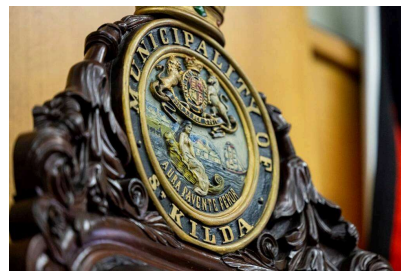
- both ASSIST counters ([St Kilda Town Hall](#) and [Port Melbourne Town Hall](#))
- all [five libraries](#)
- the [South Melbourne Market](#).

Did you miss our last Council meeting?

Actions at our 11 December Council Meeting included:

- Passing an urgent motion to condemn the terrorist attack on the Adass Israel Synagogue and recommitting our support of the Jewish community in Port Phillip.
- Granting a permit for 341 Beaconsfield Parade, St Kilda West (Beaconsfield Hotel).
- Passing a notice of motion to take a stronger, more collaborative approach to address community safety in Port Phillip.

Visit: <https://www.portphillip.vic.gov.au/about-the-council/news-and-media/council-meeting-catchup-11-december-2024>



Arts in Focus



Where Ends Meet

Our latest exhibition at Carlisle Street Arts Space, *Where Ends Meet*, opened on 9 December.

Where Ends Meet is not about beginnings or endings, but the things in between.

The exhibition features 50 new art pieces by Fikaris and 100 interpretations of his character – 'The Worker' - by artists from all over the world, as part of the Human Work (book) project.

Explore the themes of human connection through an array of drawings, paintings, printmaking and artists books and get involved by adding your own interpretation to the exhibition.

Our theatres helping the arts scene thrive

Melbourne's arts and cultural scene is often defined by its flagship venues in the CBD, but a short trip southside uncovers an incredible array of theatre venues and a vibrant arts hub.

A contributed article by Andrew Gyopar

With iconic venues such as Gasworks Arts Park, National Theatre, Red Stitch Actors' Theatre, Theatre Works, and the Palais Theatre, Port Phillip's theatre scene plays a vital role in shaping and sustaining Melbourne's cultural identity.

Port Phillip has long been an artistic enclave, supporting a blend of professional, independent, and community theatres that attract both locals and visitors alike. These

Where Ends Meet will be on display until 28 January.

Visit: <https://www.portphillip.vic.gov.au/explore-the-city/arts-and-entertainment/carlisle-street-arts-space>

theatres are crucial spaces for creative expression and serve as anchors for community connection, personal transformation, and the local economy.

These venues allow local artists to showcase their talents, nurture creativity, and support future generations of creatives, while also providing residents with a dynamic community space within a thriving arts scene.

Here's a preview of the venues that make up Port Phillip's theatre community.

Gasworks Arts Park, Albert Park

[Gasworks Arts Park](#) is a prime example of a multi-use arts centre that caters to a diverse range of audiences. Situated on the site of a former gas plant, this unique venue blends art galleries, theatre spaces, and studios, while regularly hosting markets and community events.

Offering everything from plays, to comedy, and family-friendly events, Gasworks brings people together, encouraging arts participation among residents who may otherwise have limited exposure to live theatre. It is a vibrant local arts scene like this that nurtures young talent, fosters community creativity, and strengthens social bonds.

National Theatre, St Kilda

Few theatres have the same historical allure as the [National Theatre](#) in St Kilda. This grand venue has been hosting audiences since 1921, captivating them with its classic art deco charm.

The National Theatre's Ballet School and Drama School have educated generations of Australian performers, with many going on to perform on stages around the world, cementing the venue as a key contributor to the performing arts sector.

With a seating capacity of more than 780, the National Theatre is one of the largest suburban theatres in Melbourne, drawing significant productions that would often be reserved for city venues.

Red Stitch Actors' Theatre, St Kilda

[Red Stitch Actors' Theatre](#) is Melbourne's only ensemble-based company dedicated to presenting new Australian and international works. Known for its commitment to nurturing local playwrights, Red Stitch has become a

force in developing contemporary Australian theatre. Its productions are intimate and often edgy, offering audiences the chance to experience thought-provoking work in an up-close-and-personal setting.

Red Stitch's focus on new writing not only provides a voice for local artists but also allows Melbourne audiences to engage with stories that reflect their own lives and issues. In doing so, Red Stitch helps sustain Melbourne's storytelling tradition, connecting audiences with relevant themes and creating a profound sense of belonging and shared experience.

Theatre Works, St Kilda
[Theatre Works](#) has earned a reputation as a fearless incubator for independent theatre – a space where boundary-pushing and experimental works are born. Since its establishment in 1980, Theatre Works has become renowned for its commitment to innovation and diversity, supporting both established and emerging artists who wish to challenge traditional theatre conventions.

Theatre Works offers audiences something distinct from mainstream productions, inviting locals to experience fresh perspectives and original voices.

Palais Theatre, St Kilda
No story about Port Phillip's theatres would be complete without mentioning the iconic [Palais Theatre](#). With its grand façade and stunning backdrop of the bay, the Palais is more than just a theatre; it's a landmark and emblem of Melbourne's cultural history.

Since its opening in 1927, the Palais has hosted to countless international artists and memorable performances, cementing its place as one of Australia's most beloved entertainment venues.

While primarily known for music and large-scale events, the Palais Theatre stands as a testament to the enduring appeal of live performance in all its forms. Its proximity to other theatres in Port Phillip reinforces the area as a cultural hub, drawing visitors from across Melbourne and beyond.

Andrew Gyopar is an Elwood-based theatre producer. Under the moniker Andrew G, he shares his passion for theatre on YouTube, Instagram and via his weekly SHOWTIME

Help Shape our City



Plan for Port Phillip 2025-29

We're developing a Plan for Port Phillip and need your input based on the things that matter to you.

The Plan for Port Phillip will guide how we will serve our community over the next four years. The plan defines the projects and services we will deliver. The Plan for Port Phillip 2025-29 replaces the [Council Plan 2021-31](#).

Last chance: Making it easier to have your say

We're updating our [Community Engagement Policy](#) to improve how you can share feedback when Council decisions are being made that impact or interest you. Our current policy is due to expire in 2025. We are [collecting your feedback](#) until 16 December.

What we've heard from you

You can read the community engagement reports for some recent projects we've heard feedback on here:

- [Kiosk at 129 Beaconsfield Parade](#)
- [Middle Park Library Upgrade](#)
- [St Kilda Adventure Playground Upgrade](#)
- [Edward Park Public Toilets Upgrade](#)
- [Health and Wellbeing Plan](#)
- [Youth Soundcheck – Experiences of live music in our city](#)

Visit: <https://haveyoursay.portphillip.vic.gov.au/>

Sustainability

Vape recycling expands in Port Phillip

The City of Port Phillip is continuing its vape recycling trial and has expanded drop-off points across the city.

The use of e-cigarettes also known as vapes has been steadily increasing, leading to an increase in plastic and electronic waste.

Vapes must never be placed in regular bins as they can explode and cause serious injury. Our new vape recycling trial allows residents to dispose of vapes safely while saving minerals like lithium from landfill.

We are pleased to announce that we have recently expanded the number of drop-off locations to the following:

1. [St Kilda Town Hall](#) – 99a Carlisle Street, St Kilda, 3182



2. [Port Phillip Resource Recovery Centre](#) – Corner of White and Boundary Streets, South Melbourne, 3205
3. [Victorian Pride Centre](#) – 79-81 Fitzroy Street, St Kilda, 3182

Be an Environmental Leader

Are you passionate about environmental sustainability but not sure where to start? Do you have an environmental idea you would like to put into action? Then our Environmental Leaders course could be for you.

This course is aimed at anyone who wants to become an environmental leader with a focus on individual growth in a team-based environment. No pre-requisites or skills required. Expressions of interest for 2025 are open now.

Visit: <https://www.portphillip.vic.gov.au/council-services/sustainability-and-climate-change/take-action/environmental-leadership-course>



Community Spirit

Our Accessible Beaches program is back for summer

Everyone can experience the joy of our beautiful beaches thanks to the return of our Accessible Beaches program.

The free and accessible services include: Accessible Beach Matting, a Mobi-Chair and a Powered Beach Wheelchair.

These services are possible thanks to a collaboration between our Council, St Kilda Lifesaving Club and Port Melbourne Lifesaving Club.

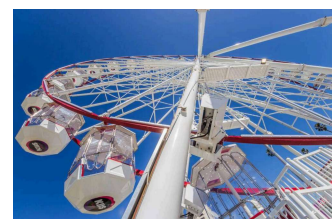
Visit: <https://www.portphillip.vic.gov.au/explore-the-city/beaches-parks-and-playgrounds/accessible-beaches>



What's On



BIG Sculpture Trail



KIIS Eye returns

Celebrating women in music

8 - 9 March

A brand-new festival celebrating women in music is coming to St Kilda.

The inaugural ROAR FEST Celebrating Women in Music will take place with global celebrations for International Women's Day.

Leading the charge as official ROAR Ambassadors are three of Australia's finest female performers: the irrepressible Kate Ceberano, Tania Doko (Bachelor Girl) and Ella Hooper (Killing Heidi).

Tickets are on sale now. For more information, visit our [website](#).

15 December - 19 February

The Big Sculpture Trail has arrived in St Kilda, with 20 larger-than-life sculptures making their mark across St Kilda.

The eye-catching were created by acclaimed Australian contemporary artists and are now out in St Kilda for the world to enjoy.

Explore quirky and intriguing works across iconic locations including Acland Street, Luna Park, The Palais Forecourt, O'Donnell Gardens, Alfred Square, the Esplanade, Theatre Works, and Linden New Art.

Visit [BIG Sculpture Australia](#) for more information.

Open daily 10 am to 9.30 pm

The summer fun has arrived at Catani Gardens with the return of the popular KIIS Eye Ferris Wheel.

Take in the stunning 360-degree views of the coastline, St Kilda and Melbourne's beautiful skyline from 35 metres in the air.

Repeat visits are recommended to catch the sunset over the bay and Melbourne's sparkling lights after dark.

Port Phillip residents can receive up to 30 per cent off ticket prices by showing any form of identification with a Port Phillip address.

Visit [Skyline Attractions](#) for more information.

Το Divercity είναι το επίσημο ηλεκτρονικό κοινοτικό ενημερωτικό δελτίο του Δήμου Port Phillip. Επισκεφθείτε την ιστοσελίδα Νέων και Μέσων Ενημέρωσης του Δήμου και επιλέξτε τη λειτουργία 'μετάφραση' ['translate'] στο επάνω μέρος για να διαβάσετε ιστορίες στο Divercity στην γλώσσα προτίμησής σας. Εγγραφείτε δωρεάν για να παίρνετε το Divercity στα εισερχόμενα του email σας και να ενημερώνεστε για τα νέα της Πόλης και του Δήμου σας στη διεύθυνση **portphillip.vic.gov.au**

Divercity सटी ऑफ पोर्ट फलिपि का आधिकारिक सामुदायिक ई-न्यूज़लेटर है। काउंसिल के समाचार और मीडिया वेबपेज पर जाएँ और अपनी पसंदीदा भाषा में Divercity कहानियाँ पढ़ने के लिए पेज के शीर्ष पर अनुवाद सुविधा चुनें। अपने ईमेल इनबॉक्स में Divercity प्राप्त करने के लिए न:शुल्क साइन अप करें और वेबसाइट **portphillip.vic.gov.au** पर अपने शहर और काउंसिल के बारे में समाचारों से अवगत रहें।

Divercity to oficjalny środowiskowy biuletyn informacyjny City of Port Phillip. Odwiedź stronę internetową News and Media City of Port Phillip i wybierz preferowany przez siebie język w funkcji Translate w górnej części strony, by poczytać różne doniesienia Divercity. Zarejestruj się za darmo, by otrzymywać Divercity drogą mailową i być na bieżąco w sprawach dotyczących twojego City oraz Council na stronie **portphillip.vic.gov.au**

Divercity является официальным общественным электронным бюллетенем района Порт Филлип. Посетите веб-страницу Муниципалитета, называемую Новости и СМИ, и выберите модуль перевода наверху, чтобы прочесть статьи в Divercity на вашем языке. Подпишитесь на бесплатную рассылку Divercity по электронной почте, чтобы получать последние новости по вашему району и муниципалитету по адресу **portphillip.vic.gov.au**

Divercity 是菲利普港市的官方社区电子新闻通讯。This email was sent by City of Port Phillip, 99a Carlisle Street, St Kilda, VIC 3182, Australia to tlh@cityofportphillip.vic.gov.au.
访问市政府的新闻及媒体网页，在顶部选择翻译功能，您便能用中文阅读 Divercity 里面的故事。
免费注册用电子邮件接收 Divercity，上网跟进本市和市政府的新闻，网址：**portphillip.vic.gov.au**。

[Unsubscribe](#)

Divercity es el boletín de noticias electrónico oficial de la comunidad de City of Port Phillip. Visite la página de Noticias y Medios de Comunicación (News and Media) del ayuntamiento y use la función "Translate" ("Traducir") en la parte superior del menú para leer las historias de Divercity en el idioma de su elección.
Suscríbase de manera gratuita para recibir Divercity directamente en su buzón de correo electrónico y manténgase al tanto de las noticias de City of Port Phillip y su ayuntamiento en **portphillip.vic.gov.au**



You are receiving this email because you subscribed to Divercity magazine mailing list.
Want to change your details? [Update your details.](#)

[Contact us](#) | [Privacy Statement](#) | [Accessibility](#)