



Orbit Solutions Pty Ltd

PO Box 736  
Port Melbourne  
VIC 3207

vic@orbitsolutions.com.au  
www.orbitsolutions.com.au

+61 3 9690 4488

Memberships & Associations



Australian  
Institute of  
Architects



Victorian Planning &  
Environmental Law Association

Copyright of this document and the materials included in it are owned by Orbit Solutions Pty Ltd, and we reserve all rights. You may not copy or distribute any text materials or any photography, illustration, artwork or other graphic material contained for any use without first obtaining the written permission of a Director of Orbit Solutions Pty Ltd.

# Visual Amenity Report

VCAT Reference No:

**TBC**

Site Address:

**146-150 Bridport Street,  
Albert Park VIC 3206**

For:

**JD Bridport Street 1 Pty Ltd**

Authored by:

Chris Goss  
Architect (ARBV)  
B.Arch, B.Env.Des

Date:

04 April 2025



Orbit Solutions Pty Ltd

PO Box 736  
Port Melbourne  
VIC 3207  
  
vic@orbitsolutions.com.au  
www.orbitsolutions.com.au

+61 3 9690 4488

Memberships & Associations



Copyright of this document and the materials included in it are owned by Orbit Solutions Pty Ltd, and we reserve all rights. You may not copy or distribute any text materials or any photography, illustration, artwork or other graphic material contained for any use without first obtaining the written permission of a Director of Orbit Solutions Pty Ltd.

VCAT Ref No: **TBC**

Site Address:  
**146-150 Bridport Street,  
Albert Park VIC 3206**

For:  
**JD Bridport Street 1 Pty Ltd**

Section: **i.**  
**CONTENTS**

Date Issued: 04 April 2025  
Project No: V25002  
Revision: -

CONTENTS

PAGE NO.	SECTION TITLE	SECTION NO.	PAGE TITLE	REVISION
1	COVER PAGE			
2	CONTENTS	I. II.	Contents	-
3	LOCATION MAP	III.	Camera Locations	-
4	PHOTOMONTAGE 01	A01.01	View 01 Original Photograph @ 20mm	-
		A01.02	View 01 AlignView with Point Cloud Dataset	-
		A01.03	View 01 Photograph with Endorsed and Proposed Building Outlines	-
		A01.04	View 01 Endorsed Built Form	-
		A01.05	View 01 Endorsed Built Form with Landscaping	-
		A01.06	View 01 Endorsed Built Form with Landscaping & Endorsed and Proposed Building Outlines	-
		A01.07	View 01 Proposed Built Form	-
		A01.08	View 01 Proposed Built Form with Landscaping	-
		A01.09	View 01 Proposed Built Form with Landscaping & Endorsed and Proposed Building Outlines	-
14	PHOTOMONTAGE 02	A02.01	View 02 Original Photograph @ 20mm	-
		A02.02	View 02 AlignView with Point Cloud Dataset	-
		A02.03	View 02 Photograph with Endorsed and Proposed Building Outlines	-
		A02.04	View 02 Endorsed Built Form	-
		A02.05	View 02 Endorsed Built Form with Landscaping	-
		A02.06	View 02 Endorsed Built Form with Landscaping & Endorsed and Proposed Building Outlines	-
		A02.07	View 02 Proposed Built Form	-
		A02.08	View 02 Proposed Built Form with Landscaping	-
		A02.09	View 02 Proposed Built Form with Landscaping & Endorsed and Proposed Building Outlines	-
23	PHOTOMONTAGE 03	A03.01	View 03 Original Photograph @ 20mm	-
		A03.02	View 03 AlignView with Point Cloud Dataset	-
		A03.03	View 03 Photograph with Endorsed and Proposed Building Outlines	-
		A03.04	View 03 Endorsed Built Form	-
		A03.05	View 03 Endorsed Built Form with Landscaping	-
		A03.06	View 03 Endorsed Built Form with Landscaping & Endorsed and Proposed Building Outlines	-
		A03.07	View 03 Proposed Built Form	-
		A03.08	View 03 Proposed Built Form with Landscaping	-
		A03.09	View 03 Proposed Built Form with Landscaping & Endorsed and Proposed Building Outlines	-
32	PHOTOMONTAGE 04	A04.01	View 04 Original Photograph @ 20mm	-
		A04.02	View 04 AlignView with Point Cloud Dataset	-
		A04.03	View 04 Photograph with Endorsed and Proposed Building Outlines	-
		A04.04	View 04 Endorsed Built Form	-
		A04.05	View 04 Endorsed Built Form with Landscaping	-
		A04.06	View 04 Endorsed Built Form with Landscaping & Endorsed and Proposed Building Outlines	-
		A04.07	View 04 Proposed Built Form	-
		A04.08	View 04 Proposed Built Form with Landscaping	-
		A04.09	View 04 Proposed Built Form with Landscaping & Endorsed and Proposed Building Outlines	-



Orbit Solutions Pty Ltd

PO Box 736  
Port Melbourne  
VIC 3207  
  
vic@orbitsolutions.com.au  
www.orbitsolutions.com.au

+61 3 9690 4488

Memberships & Associations



Copyright of this document and the materials included in it are owned by Orbit Solutions Pty Ltd, and we reserve all rights. You may not copy or distribute any text materials or any photography, illustration, artwork or other graphic material contained for any use without first obtaining the written permission of a Director of Orbit Solutions Pty Ltd.

VCAT Ref No: TBC

Site Address: 146-150 Bridport Street, Albert Park VIC 3206

For: JD Bridport Street 1 Pty Ltd

Section: ii. CONTENTS

Date Issued: 04 April 2025

Project No: V25002

Revision: -

CONTENTS

PAGE NO.	SECTION TITLE	SECTION NO.	PAGE TITLE	REVISION
41	PHOTOMONTAGE 05	A05.01	View 05 Original Photograph @ 20mm	-
		A05.02	View 05 AlignView with Point Cloud Dataset	-
		A05.03	View 05 Photograph with Endorsed and Proposed Building Outlines	-
		A05.04	View 05 Endorsed Built Form	-
		A05.05	View 05 Endorsed Built Form with Landscaping	-
		A05.06	View 05 Endorsed Built Form with Landscaping & Endorsed and Proposed Building Outlines	-
		A05.07	View 05 Proposed Built Form	-
		A05.08	View 05 Proposed Built Form with Landscaping	-
		A05.09	View 05 Proposed Built Form with Landscaping & Endorsed and Proposed Building Outlines	-





Orbit Solutions Pty Ltd

PO Box 736  
Port Melbourne  
VIC 3207  
  
vic@orbitsolutions.com.au  
www.orbitsolutions.com.au

+61 3 9690 4488

Memberships & Associations



Copyright of this document and the materials included in it are owned by Orbit Solutions Pty Ltd, and we reserve all rights. You may not copy or distribute any text materials or any photography, illustration, artwork or other graphic material contained for any use without first obtaining the written permission of a Director of Orbit Solutions Pty Ltd.

VCAT Ref No: **TBC**

Site Address:  
**146-150 Bridport Street,  
Albert Park VIC 3206**

For:  
**JD Bridport Street 1 Pty Ltd**

Section: **iii.  
LOCATION MAP**

Date Issued: 04 April 2025

Project No: V25002

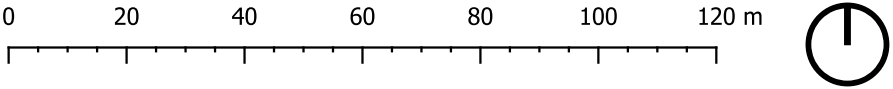
Revision: -



Camera Locations

- Field of view
- Viewing direction

Note: View Cones are a representation of camera locations & indicative view directions only







Orbit Solutions Pty Ltd

PO Box 736  
Port Melbourne  
VIC 3207  
  
vic@orbitsolutions.com.au  
www.orbitsolutions.com.au

+61 3 9690 4488

Memberships & Associations



Copyright of this document and the materials included in it are owned by Orbit Solutions Pty Ltd, and we reserve all rights. You may not copy or distribute any text materials or any photography, illustration, artwork or other graphic material contained for any use without first obtaining the written permission of a Director of Orbit Solutions Pty Ltd.

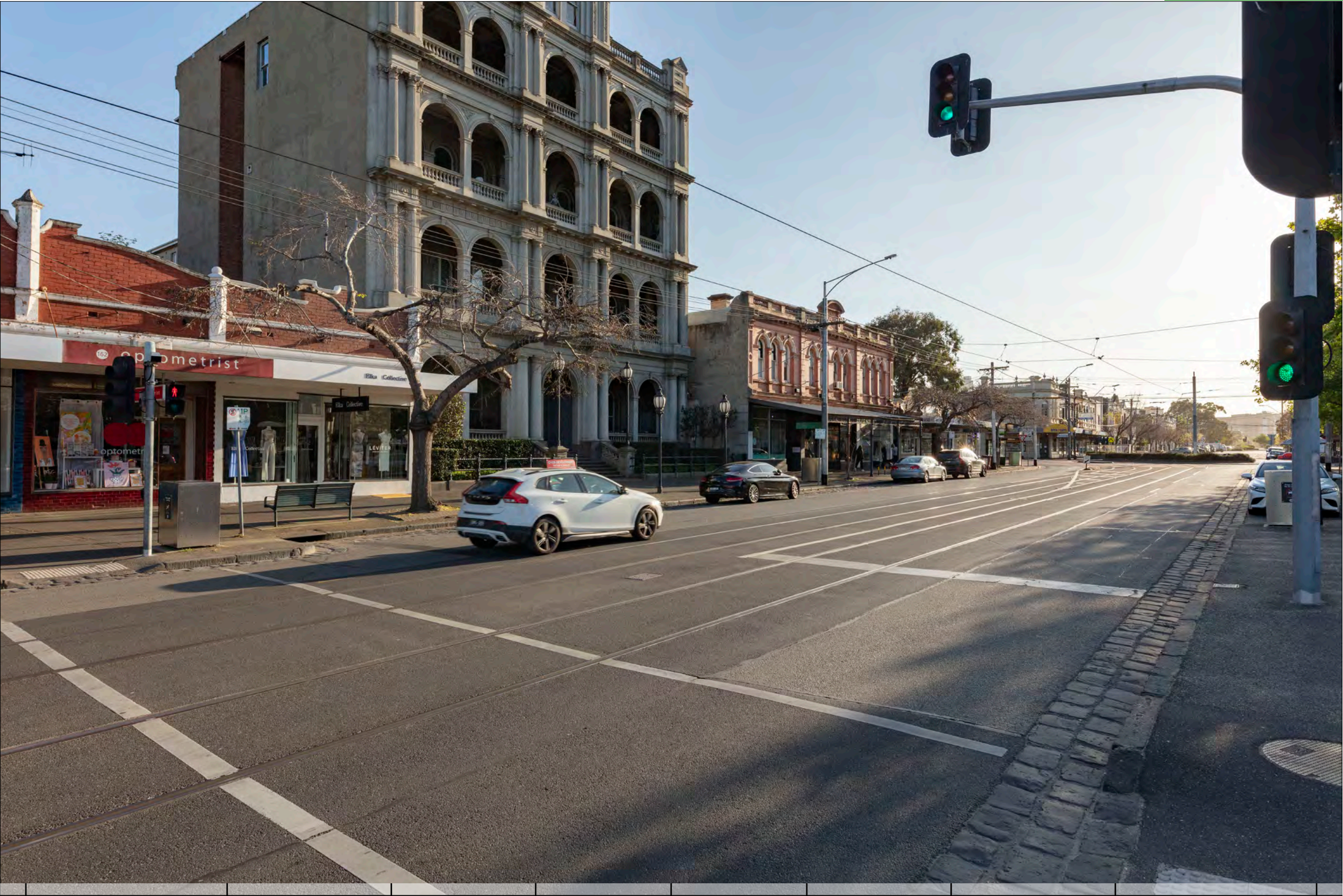
VCAT Ref No: TBC

Site Address: 146-150 Bridport Street, Albert Park VIC 3206

For: JD Bridport Street 1 Pty Ltd

Section: 01  
PHOTOMONTAGE 01

Date Issued: 04 April 2025  
Project No: V25002  
Revision: -



View 01 - Original Photograph @20mm

PHOTOGRAPH DETAILS

Location description: Pedestrian Corssing at intersection of Bridport st & Faussett ST, on centre median.  
Date & time taken: 07:30am EST on 26/9/2023  
Height from ground: 1.65m  
Distance to site: 41m

EQUIPMENT SPECIFICATIONS

Camera: Canon 5DSR Full Frame  
Lens: Sigma 20mm f 1 / 4 DG HSM Art Lens  
Focal length: 20mm  
Field of view (FOV): 84.0 deg (horizontal)







Orbit Solutions Pty Ltd

PO Box 736  
Port Melbourne  
VIC 3207  
  
vic@orbitsolutions.com.au  
www.orbitsolutions.com.au

+61 3 9690 4488

Memberships & Associations



THIS IS NOT A PHOTOGRAPH

It is a Point Cloud Survey of the camera position by the licensed land surveyor.

This is used to precisely locate and orient the 3D camera to match the photograph.

See Statement of Evidence.

Copyright of this document and the materials included in it are owned by Orbit Solutions Pty Ltd, and we reserve all rights. You may not copy or distribute any text materials or any photography, illustration, artwork or other graphic material contained for any use without first obtaining the written permission of a Director of Orbit Solutions Pty Ltd.

VCAT Ref No: TBC

Site Address:  
146-150 Bridport Street,  
Albert Park VIC 3206

For:  
JD Bridport Street 1 Pty Ltd

Section:  
PHOTOMONTAGE 01

Date Issued:  
04 April 2025

Project No:  
V25002

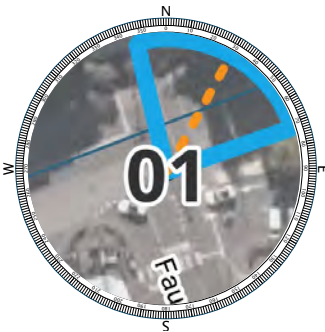
Revision:  
-



View 01 - AlignView with Point Cloud Dataset

FIELD WORK DETAILS

Easting:	320037.27
Northing:	5809852.72
Date taken:	29/09/2023
Ground (RL):	4.06m
Height from ground:	1.65m
LIDAR Scanner:	Leica Cyclone Register 360



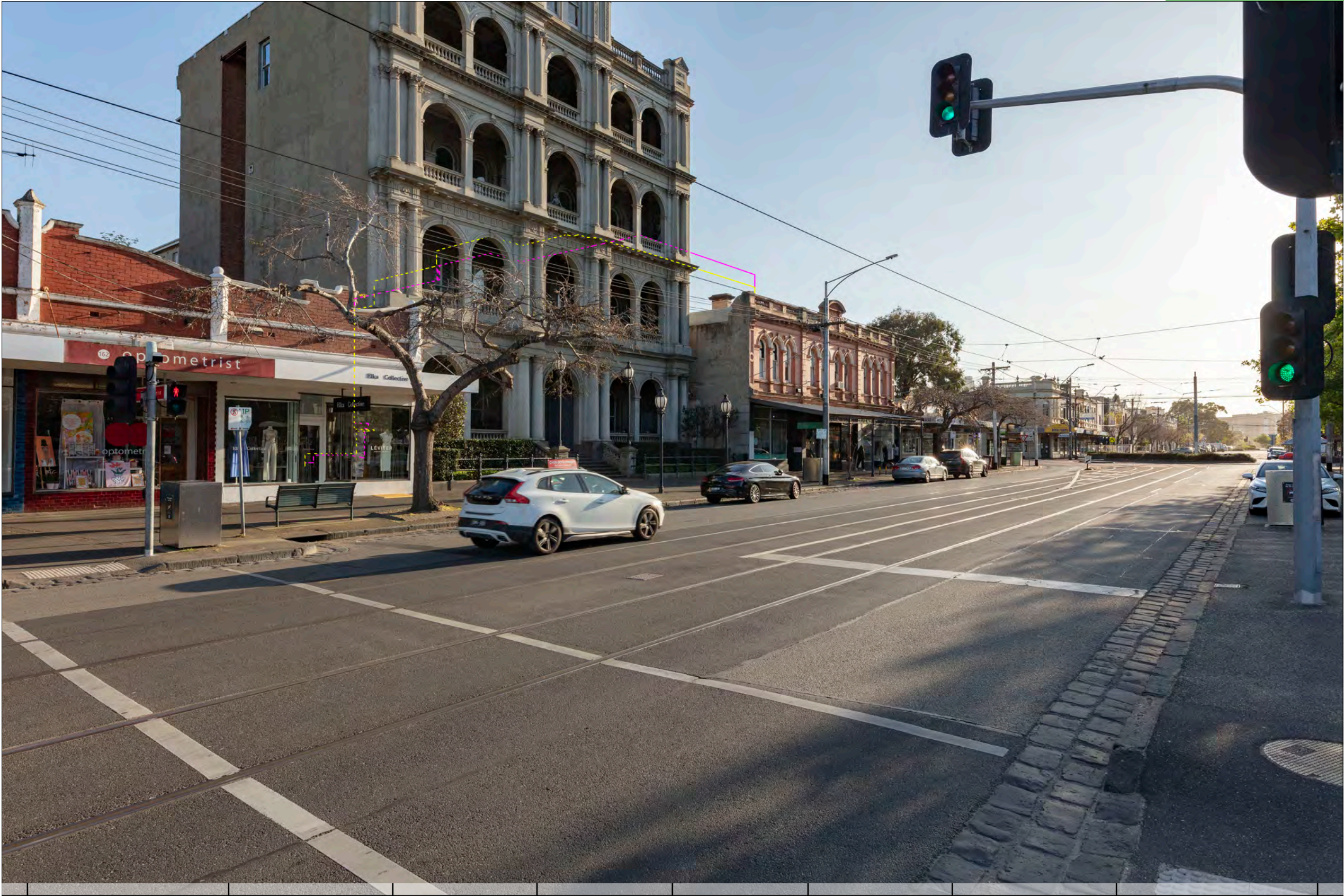
LEGEND

- Field of view
- Viewing direction
- Proposed built form – Unoccluded silhouette (excludes vegetation)
- Proposed built form – Silhouette that is occluded by existing built form (excludes vegetation)

Point Cloud Survey Top View







View 01 - Photograph with Endorsed and Proposed Building Outlines

- Endorsed built form – Unoccluded silhouette (excludes vegetation)
- Endorsed built form – Silhouette that is occluded by existing built form (excludes vegetation)
- Proposed built form – Unoccluded silhouette (excludes vegetation)
- Proposed built form – Silhouette that is occluded by existing built form (excludes vegetation)
- White/grey hatch is shown where existing elements are to be removed/demolished and no proposed elements conceal existing elements that would be revealed.



Orbit Solutions Pty Ltd

PO Box 736  
Port Melbourne  
VIC 3207

vic@orbisolutions.com.au  
www.orbisolutions.com.au

+61 3 9690 4488

Memberships & Associations



Australian  
Institute of  
Architects



Victorian Planning &  
Environmental Law Association

Copyright of this document and the materials included in it are owned by Orbit Solutions Pty Ltd, and we reserve all rights. You may not copy or distribute any text materials or any photography, illustration, artwork or other graphic material contained for any use without first obtaining the written permission of a Director of Orbit Solutions Pty Ltd.

VCAT Ref No:

TBC

Site Address:

146-150 Bridport Street,  
Albert Park VIC 3206

For:

JD Bridport Street 1 Pty Ltd

Section:

03

PHOTOMONTAGE 01

Date Issued:

04 April 2025

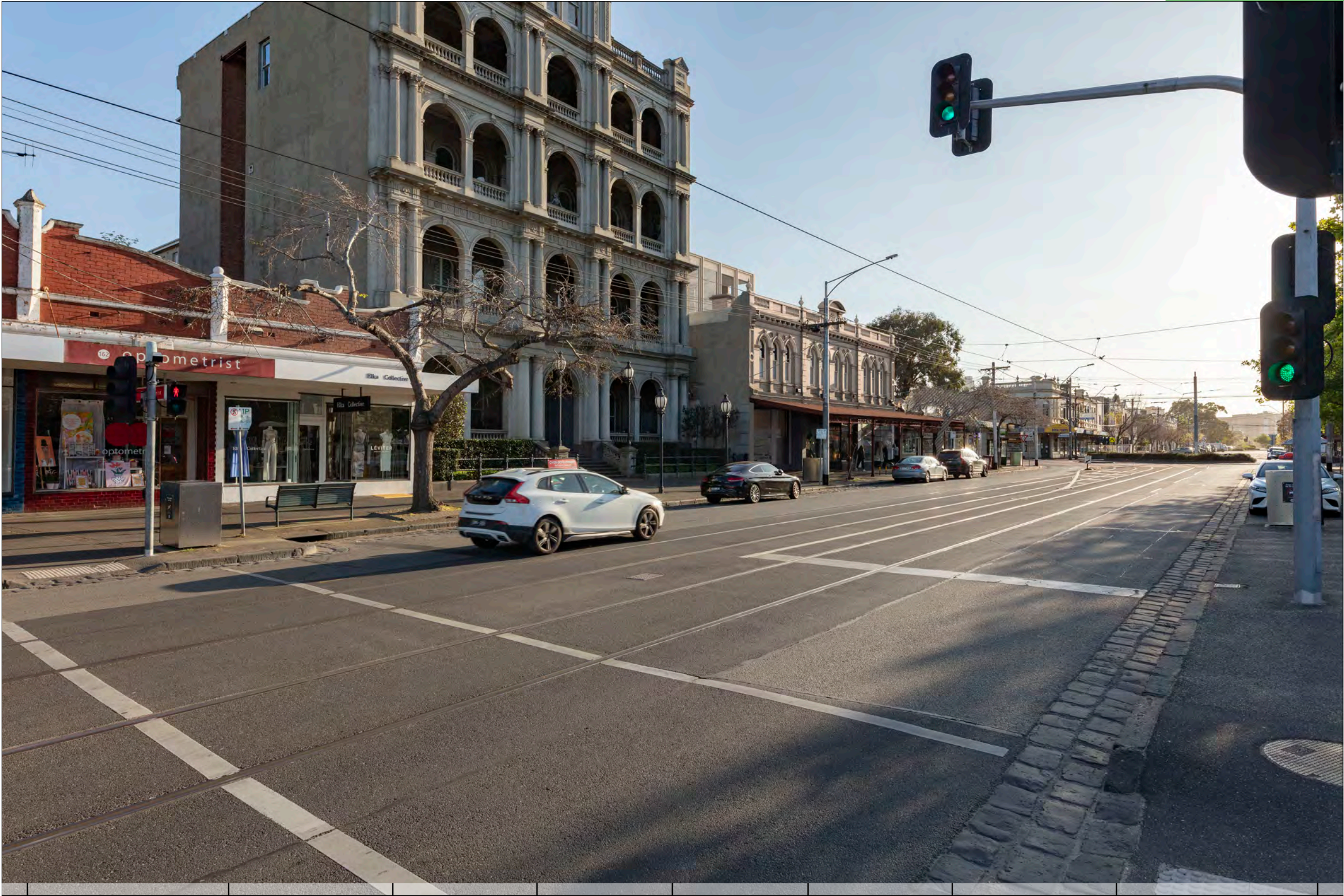
Project No:

V25002


Revision:

-





View 01 - Endorsed Built Form

 White/grey hatch is shown where existing elements are to be removed/demolished and no proposed elements conceal existing elements that would be revealed.



Orbit Solutions Pty Ltd

PO Box 736  
Port Melbourne  
VIC 3207  
  
vic@orbitsolutions.com.au  
www.orbitsolutions.com.au

+61 3 9690 4488

Memberships & Associations



Copyright of this document and the materials included in it are owned by Orbit Solutions Pty Ltd, and we reserve all rights. You may not copy or distribute any text materials or any photography, illustration, artwork or other graphic material contained for any use without first obtaining the written permission of a Director of Orbit Solutions Pty Ltd.

VCAT Ref No: **TBC**

Site Address:  
**146-150 Bridport Street,  
Albert Park VIC 3206**

For:  
**JD Bridport Street 1 Pty Ltd**

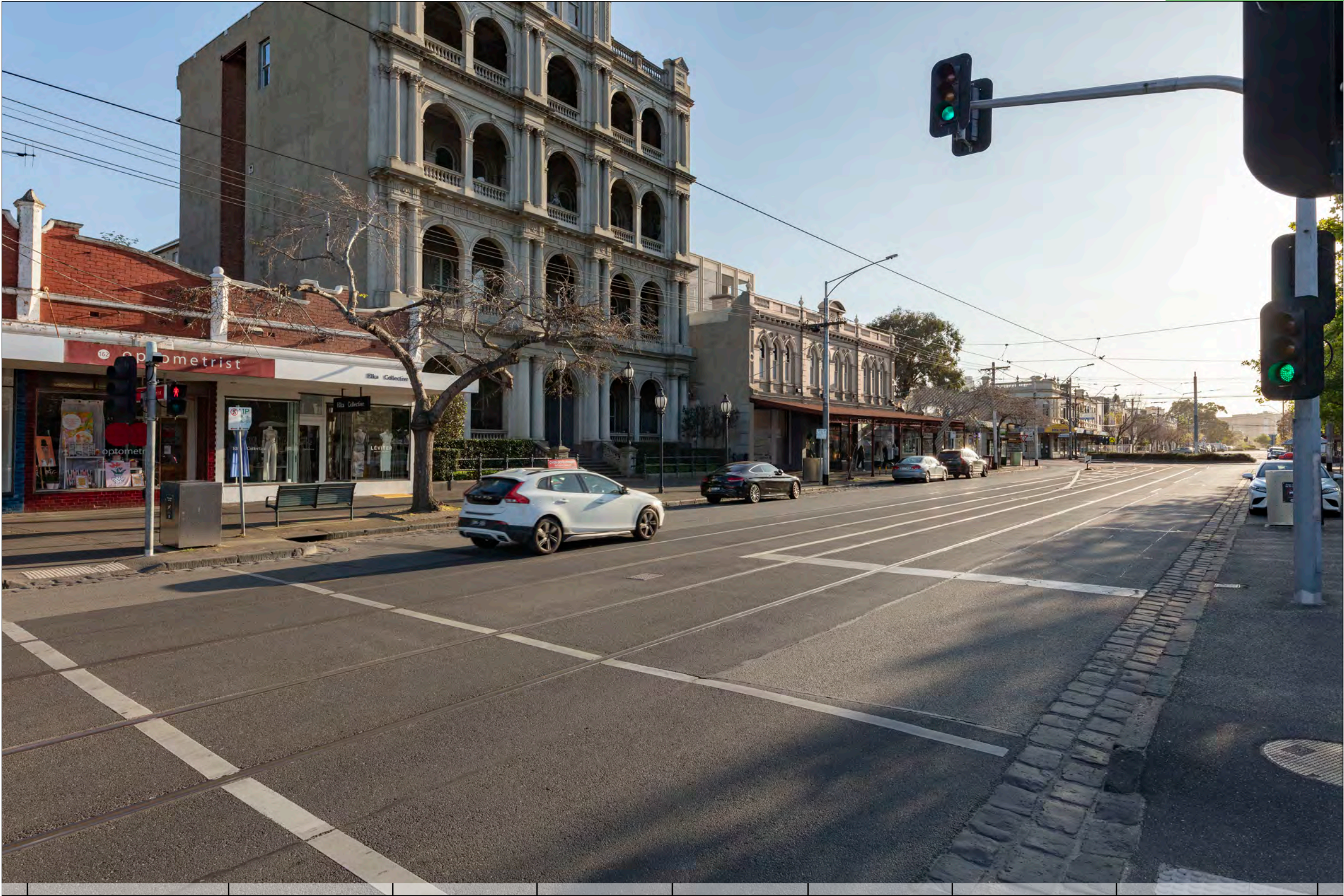
Section: **04**  
**PHOTOMONTAGE 01**

Date Issued: 04 April 2025

Project No: V25002

Revision: -





View 01 - Endorsed Built Form with Landscaping



White/grey hatch is shown where existing elements are to be removed/demolished and no proposed elements conceal existing elements that would be revealed.



Orbit Solutions Pty Ltd

PO Box 736  
Port Melbourne  
VIC 3207

vic@orbitalutions.com.au  
www.orbitalutions.com.au

+61 3 9690 4488

Memberships & Associations



Australian  
Institute of  
Architects



Victorian Planning &  
Environmental Law Association

Copyright of this document and the materials included in it are owned by Orbit Solutions Pty Ltd, and we reserve all rights. You may not copy or distribute any text materials or any photography, illustration, artwork or other graphic material contained for any use without first obtaining the written permission of a Director of Orbit Solutions Pty Ltd.

VCAT Ref No:

TBC

Site Address:

146-150 Bridport Street,  
Albert Park VIC 3206

For:

JD Bridport Street 1 Pty Ltd

Section:

05  
PHOTOMONTAGE 01

Date Issued:

04 April 2025

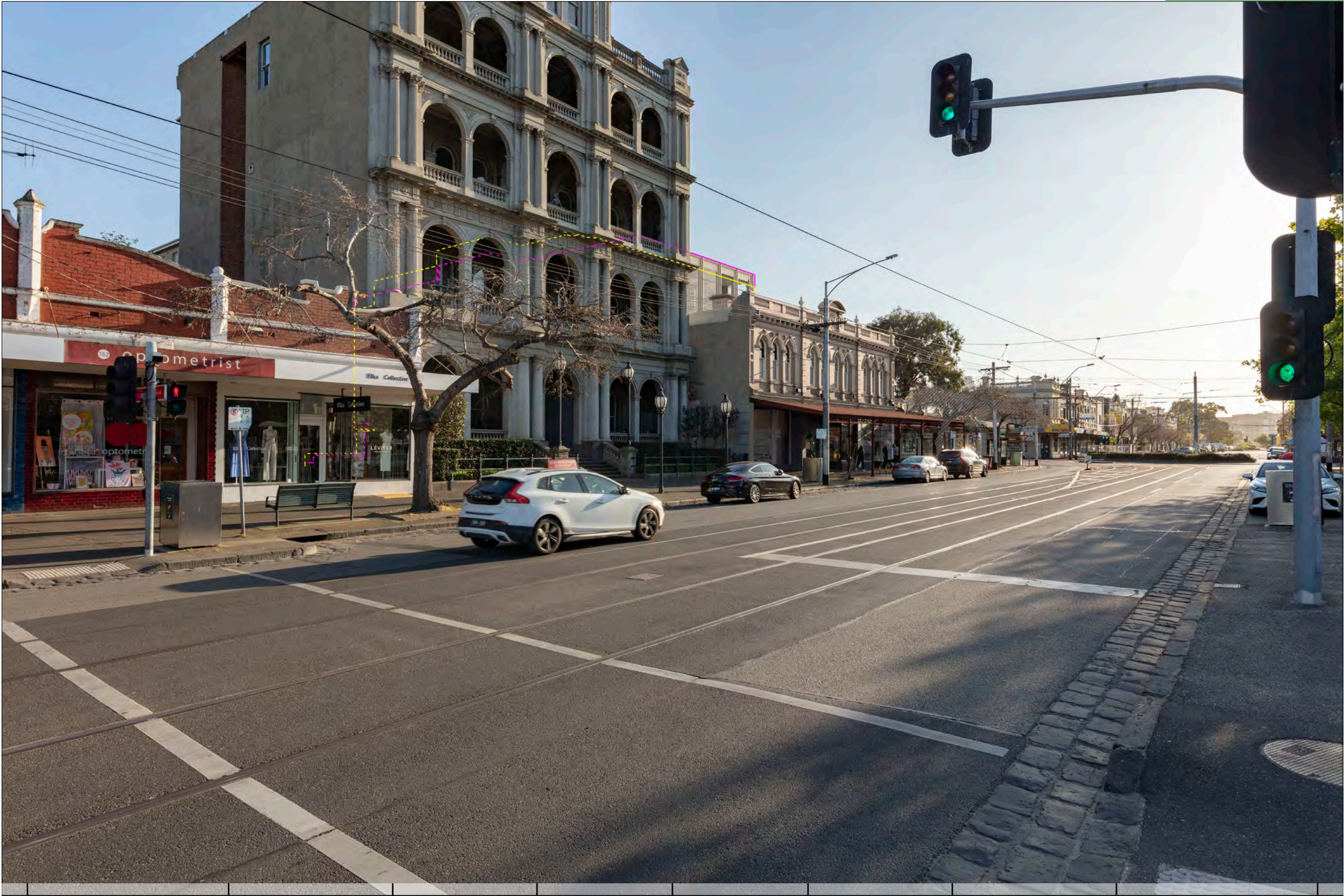
Project No:

V25002

Revision:

-





View 01 - Endorsed Built Form with Landscaping & Endorsed and Proposed Building Outlines

- Endorsed built form – Unoccluded silhouette (excludes vegetation)
- Endorsed built form – Silhouette that is occluded by existing built form (excludes vegetation)
- Proposed built form – Unoccluded silhouette (excludes vegetation)
- Proposed built form – Silhouette that is occluded by existing built form (excludes vegetation)
- White/grey hatch is shown where existing elements are to be removed/demolished and no proposed elements conceal existing elements that would be revealed.



Orbit Solutions Pty Ltd

PO Box 736  
Port Melbourne  
VIC 3207

vic@orbisolutions.com.au  
www.orbisolutions.com.au

+61 3 9690 4488

Memberships & Associations



Australian  
Institute of  
Architects



Victorian Planning &  
Environmental Law Association

Copyright of this document and the materials included in it are owned by Orbit Solutions Pty Ltd, and we reserve all rights. You may not copy or distribute any text materials or any photography, illustration, artwork or other graphic material contained for any use without first obtaining the written permission of a Director of Orbit Solutions Pty Ltd.

VCAT Ref No:

TBC

Site Address:

146-150 Bridport Street,  
Albert Park VIC 3206

For:

JD Bridport Street 1 Pty Ltd

Section:

06

PHOTOMONTAGE 01

Date Issued:

04 April 2025

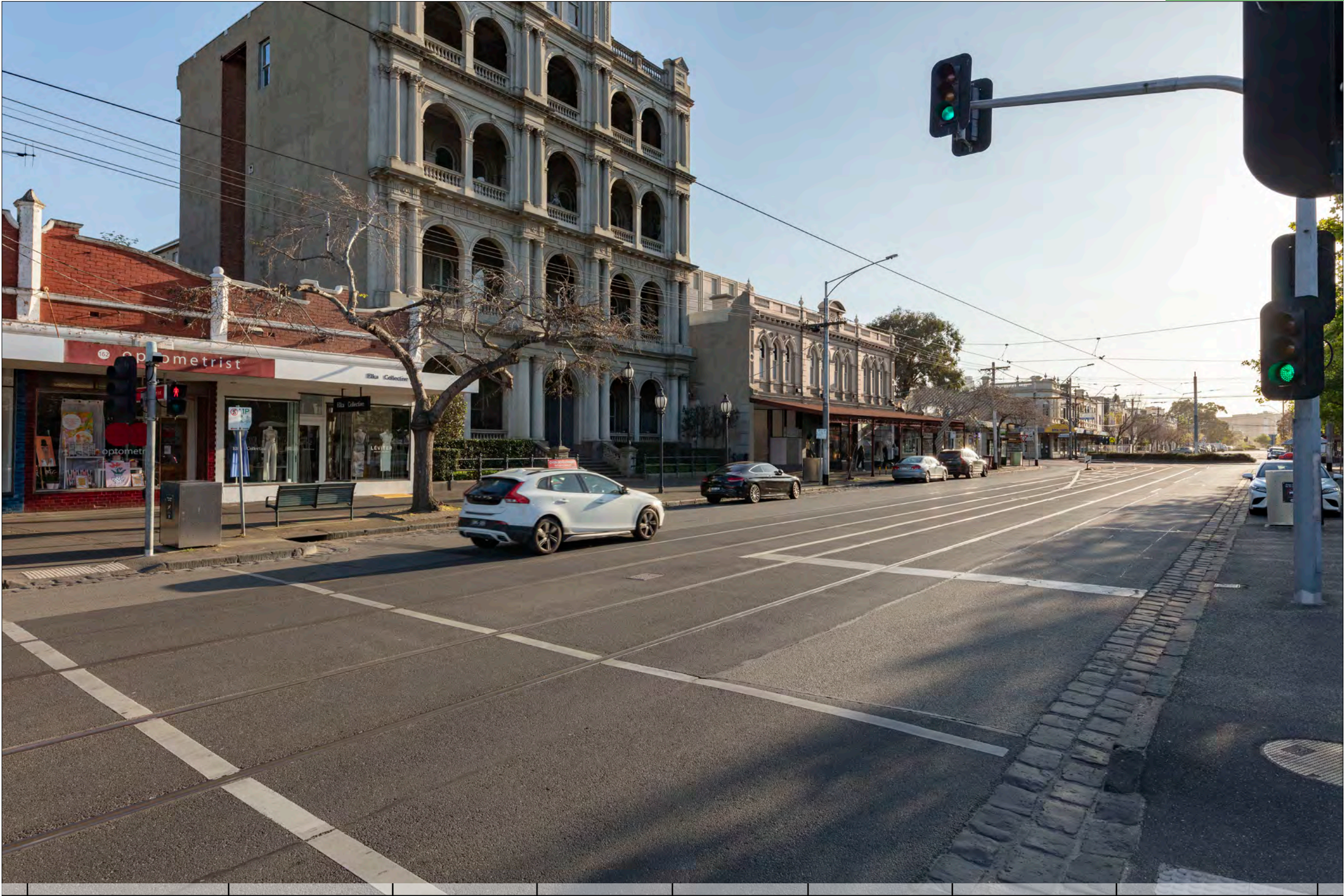
Project No:

V25002


Revision:

-





View 01 - Proposed Built Form

 White/grey hatch is shown where existing elements are to be removed/demolished and no proposed elements conceal existing elements that would be revealed.



Orbit Solutions Pty Ltd

PO Box 736  
Port Melbourne  
VIC 3207

vic@orbitsolutions.com.au  
www.orbitsolutions.com.au

+61 3 9690 4488

Memberships & Associations



Australian  
Institute of  
Architects



Victorian Planning &  
Environmental Law Association

Copyright of this document and the materials included in it are owned by Orbit Solutions Pty Ltd, and we reserve all rights. You may not copy or distribute any text materials or any photography, illustration, artwork or other graphic material contained for any use without first obtaining the written permission of a Director of Orbit Solutions Pty Ltd.

VCAT Ref No:

TBC

Site Address:

146-150 Bridport Street,  
Albert Park VIC 3206

For:

JD Bridport Street 1 Pty Ltd

Section:

07

## PHOTOMONTAGE 01

Date Issued:

04 April 2025

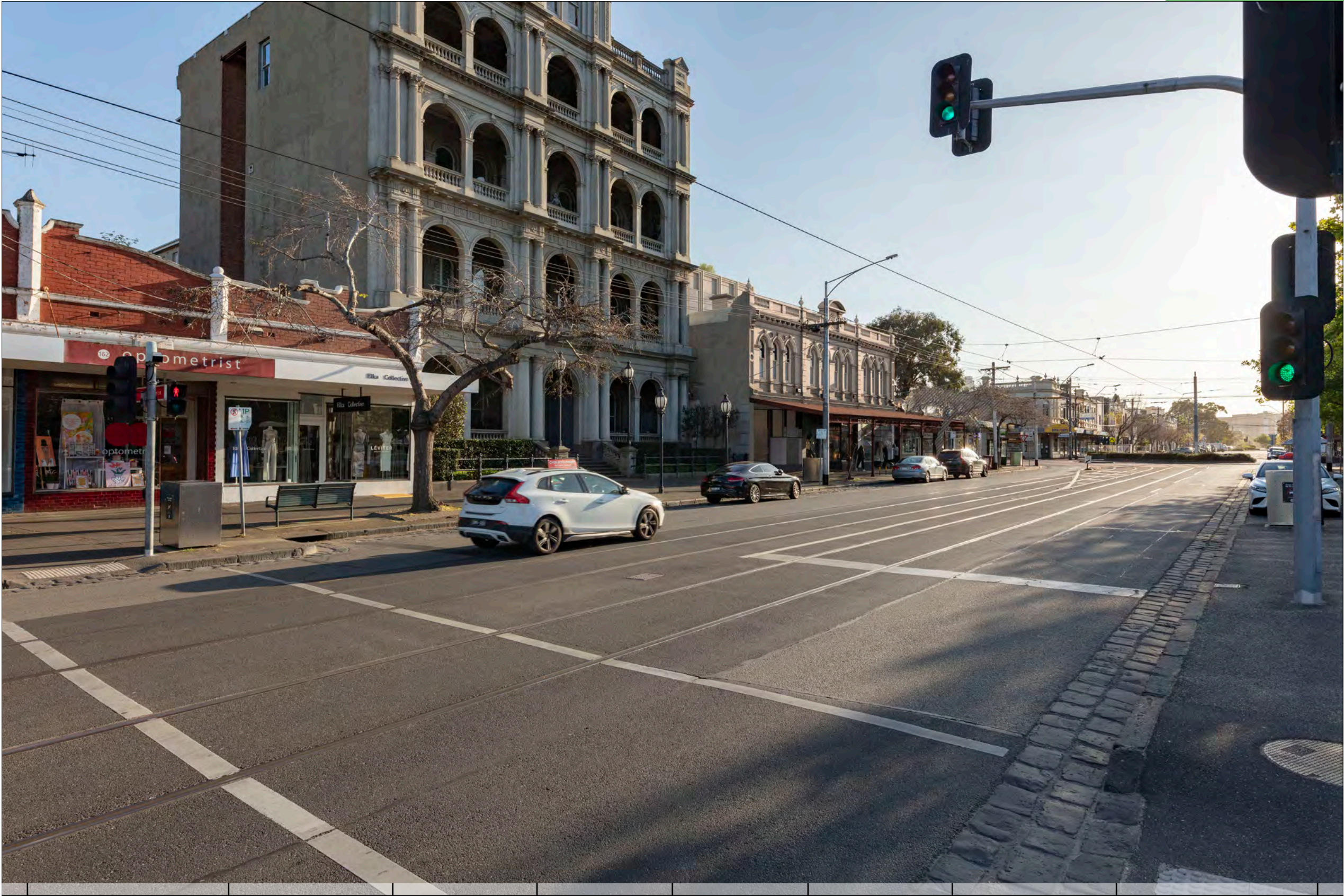
Project No:

V25002

Revision:

-





View 01 - Proposed Built Form with Landscaping



White/grey hatch is shown where existing elements are to be removed/demolished and no proposed elements conceal existing elements that would be revealed.



Orbit Solutions Pty Ltd

PO Box 736  
Port Melbourne  
VIC 3207

vic@orbitsolutions.com.au  
www.orbitsolutions.com.au

+61 3 9690 4488

Memberships & Associations



Australian  
Institute of  
Architects



Victorian Planning &  
Environmental Law Association

Copyright of this document and the materials included in it are owned by Orbit Solutions Pty Ltd, and we reserve all rights. You may not copy or distribute any text materials or any photography, illustration, artwork or other graphic material contained for any use without first obtaining the written permission of a Director of Orbit Solutions Pty Ltd.

VCAT Ref No:

TBC

Site Address:

146-150 Bridport Street,  
Albert Park VIC 3206

For:

JD Bridport Street 1 Pty Ltd

Section:

08

PHOTOMONTAGE 01

Date Issued:

04 April 2025

Project No:

V25002

Revision:

-