

# Middle Park Community Centre

## Middle Park Community Hub



**254-256 Richarson St. Middle Park 3206**

**Telephone:** (03) 9209 6349

**Fax:** (03) 9682 6589

**Email:** [comfacil@portphillip.vic.gov.au](mailto:comfacil@portphillip.vic.gov.au)

**Melways Ref:** 57H6 2K E11

Centre is located in Middle Park close to public transport, the beach and local shops. Middle Park Centre hall is situated on first floor. Limited street parking. Disabled reserved parking is available The Centre has full accessibility with lift to hall on the first floor . For booking a venue and make an enquiry refer to reference above



# Services available at the Middle Park Hub



# Maternal & Child Health Services

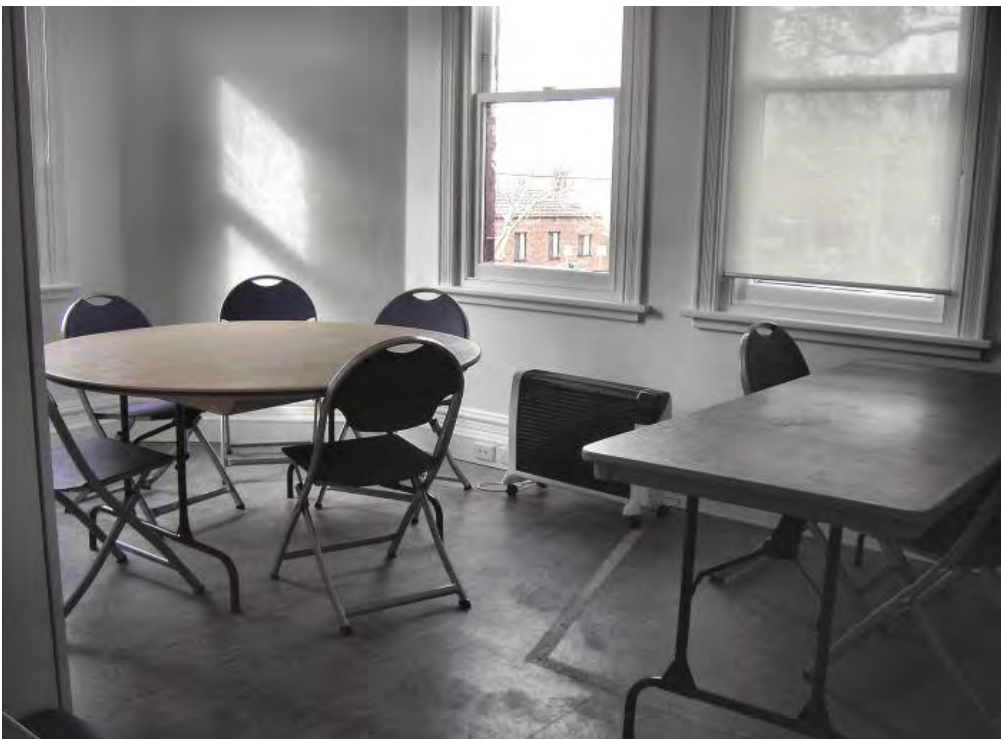


# Emerald Hill Toy Library



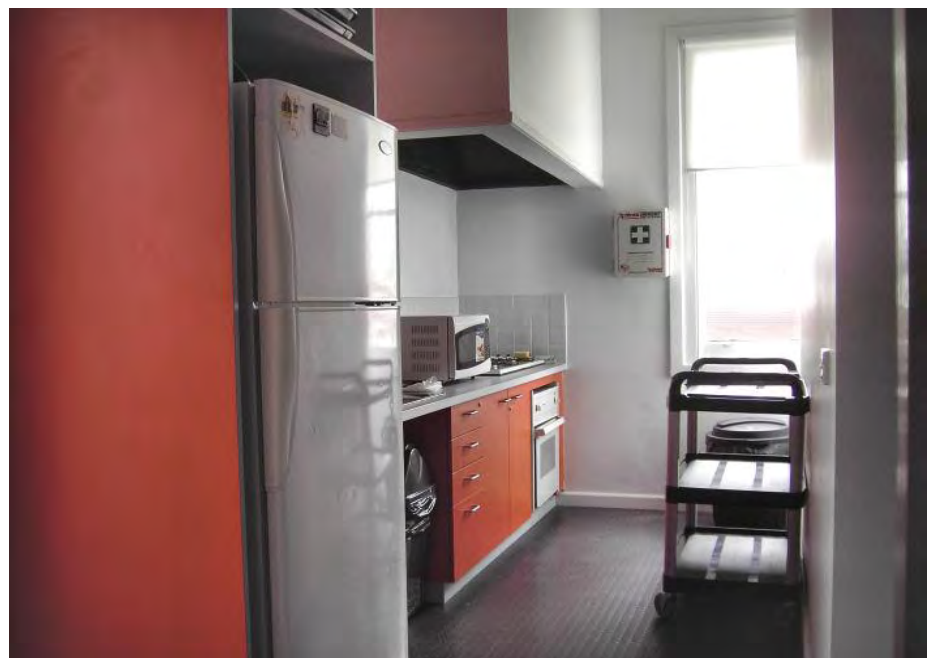
# Internet Access to CoPP on line

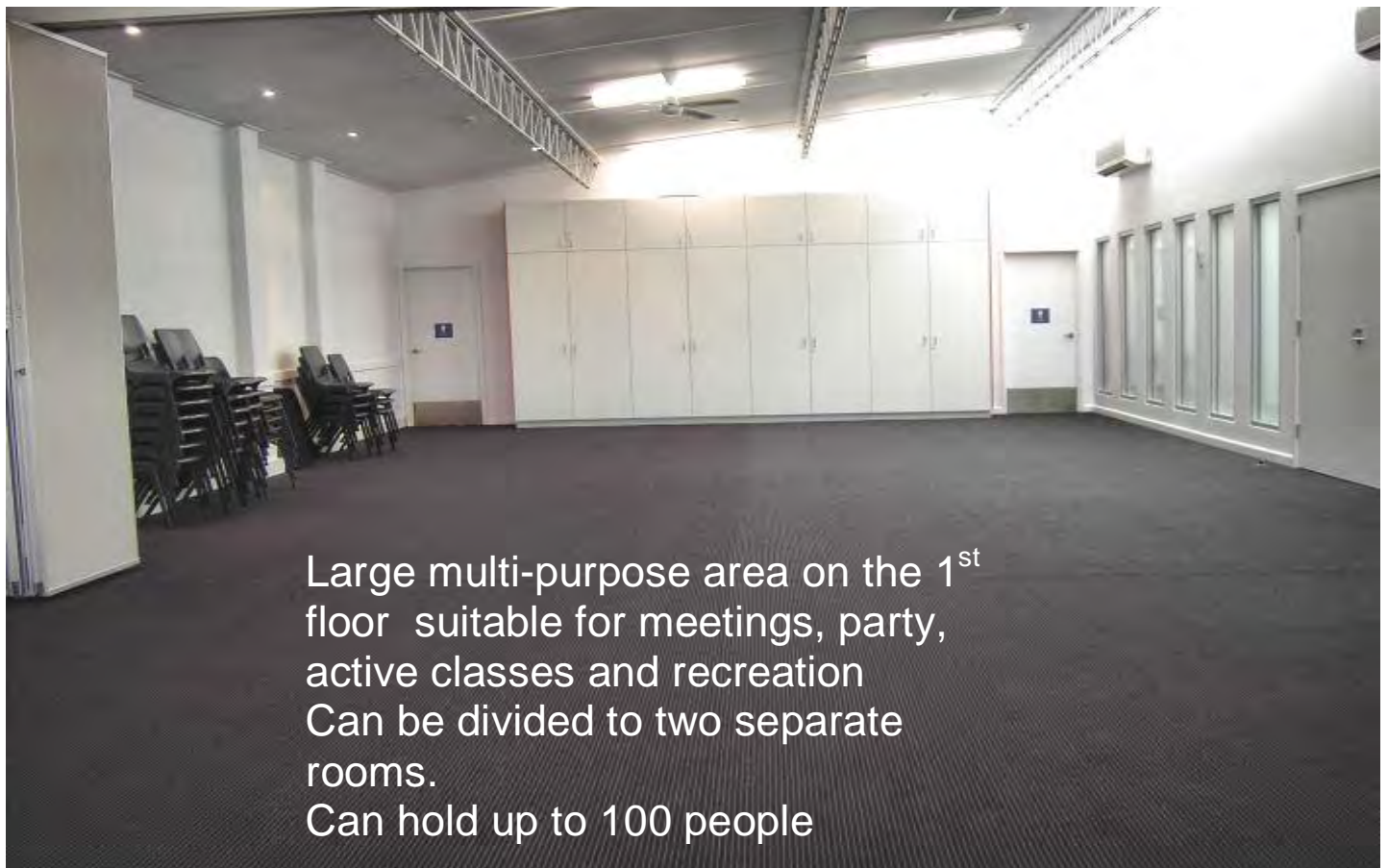
# Facilities available at the Centre



Small meeting

Fully equipped kitchen





Large multi-purpose area on the 1<sup>st</sup> floor suitable for meetings, party, active classes and recreation  
Can be divided to two separate rooms.  
Can hold up to 100 people

