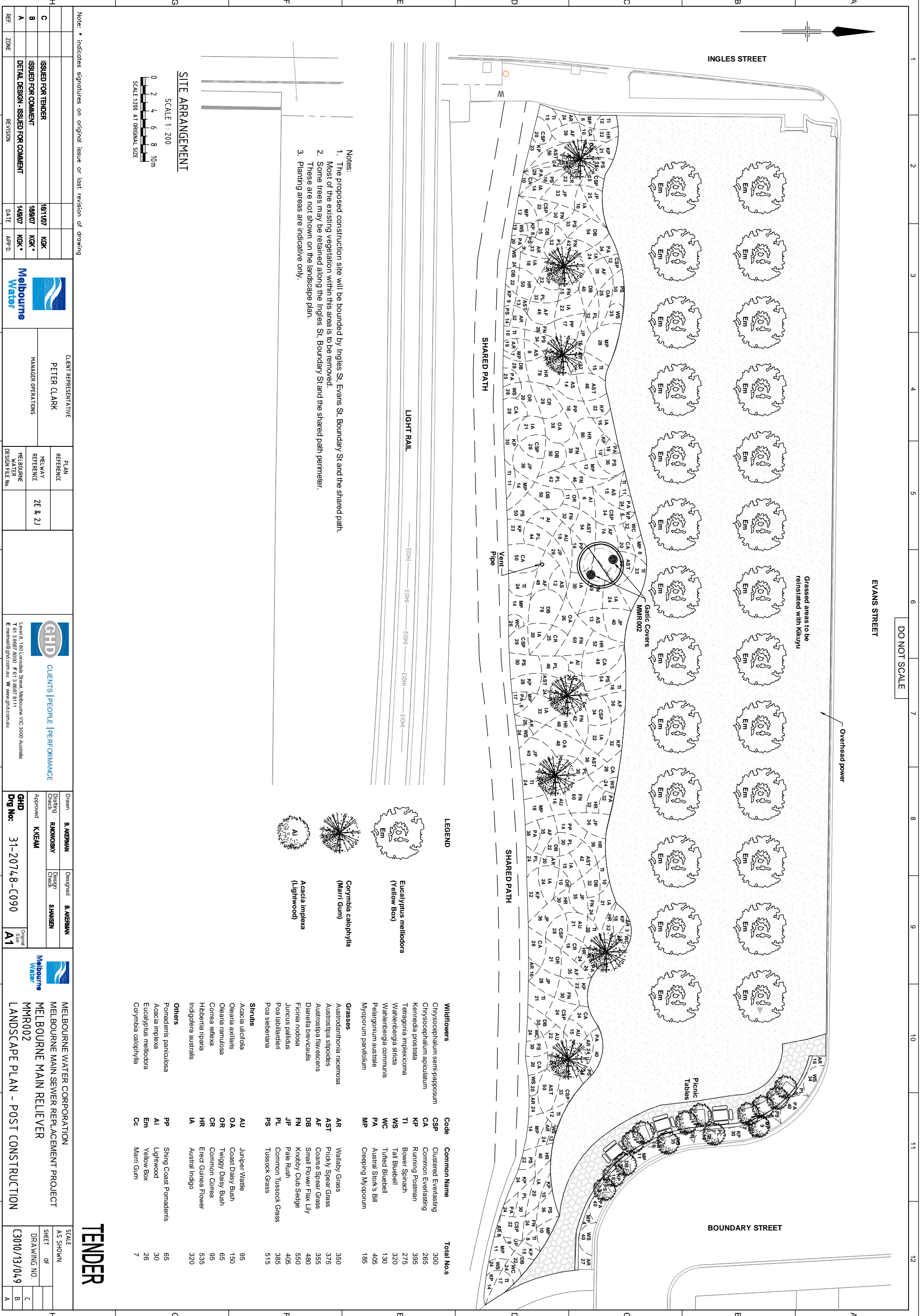


DRAWING NUMBER		C
C	C3010/13/049	C
CODE	NUMERAL	REV

PLOTTED: November 16, 2007 - 2:19 PM

G:\3120748\CAD00\Drawings\31-20748-C090.dwg



Notes:
 1. The proposed construction site will be bounded by Ingles St, Evans St, Boundary St and the shared path.
 Most of the existing vegetation within this area is to be removed.
 2. Some trees may be retained along the Ingles St, Boundary St and the shared path perimeter.
 These are not shown on the landscape plan.
 3. Planting areas are indicative only.



Note: * indicates signatures on original issue or last revision of drawing

CLIENT REPRESENTATIVE		PETER CLARK	
MANAGER OPERATIONS		MELBOURNE WATER DESIGN FILE NO.	
PLAN REFERENCE		2E & 2J	
DRAWN		DESIGNED	
B. ABERNAN	RANDOMSKY	B. ABERNAN	SHAWSEN
Checked	Approved	Checked	Approved
GHD		GHD	
31-20748-C090		31-20748-C090	
Melbourne Water		Melbourne Water	
MELBOURNE MAIN SEWER REPLACEMENT PROJECT		MELBOURNE MAIN RELIEVER	
MMR002		LANDSCAPE PLAN - POST CONSTRUCTION	
SCALE AS SHOWN		SCALE AS SHOWN	
SHEET OF		SHEET OF	
DRAWING NO.		DRAWING NO.	
C3010/13/049		C3010/13/049	
A		A	

TENDER

DO NOT SCALE

EVANS STREET

INGLES STREET

BOUNDARY STREET

Grassed areas to be reinstated with kikuyu

Overhead power

MMR002

Gatic Covers

SHARED PATH

SHARED PATH

LIGHT RAIL

EIOH1 EIOH2 EIOH3 EIOH4 EIOH5

LEGEND

Eucalyptus melliodora (Yellow Box)

Corymbia calophylla (Marri Gum)

Acacia implexa (Lightwood)