

Supporting photographic evidence to the objection and petition to stop the removal of the significant tree at 3 Charles Street, ST KILDA

Tree View from Unit 11, 92 Barkly St



Tree View from Unit 12, 92 Barkly St

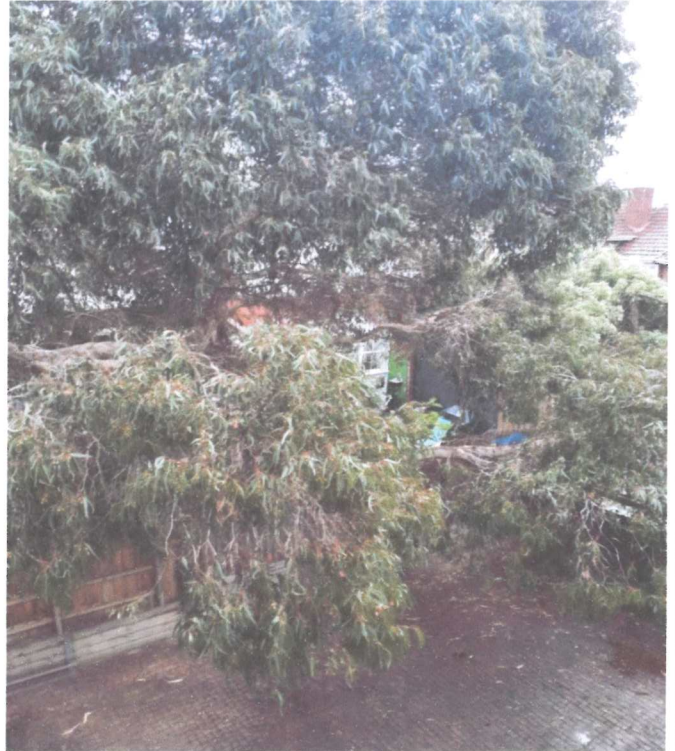


Photo 1 of tree view from 92 Barkly St COURTYARD



Photo 2 tree view from 92 Barkly St COURTYARD

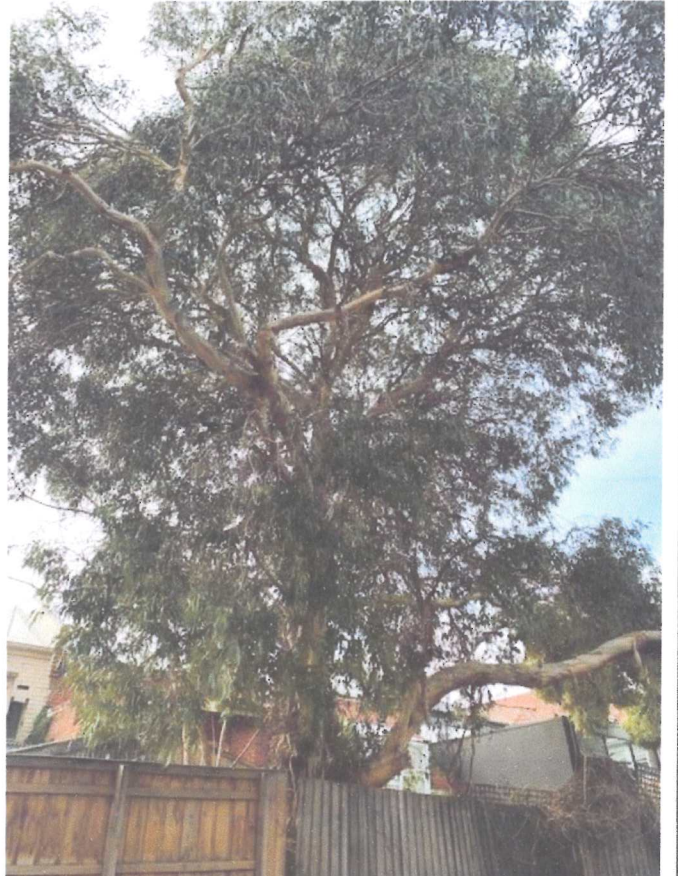


Photo 1 showing leaf matter impacting fence not the tree itself, which is not touching the fence

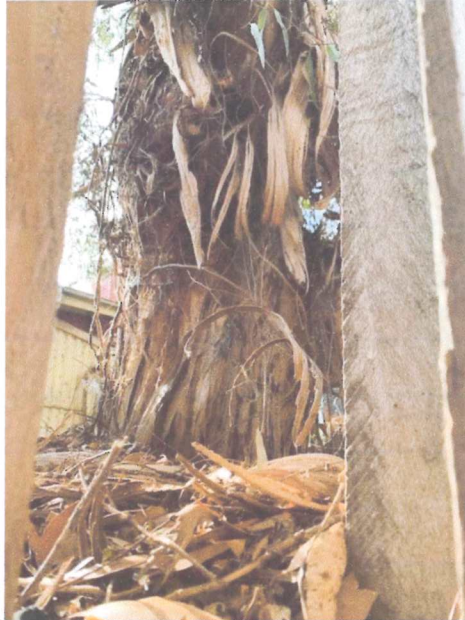


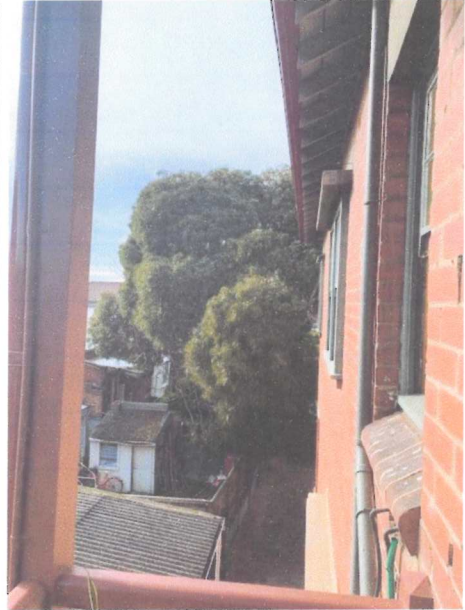
Photo 2 showing leaf matter and wisteria impacting fence not the tree itself, which is not touching the fence



Tree view from Unit 8, 92 Barkly St



Tree view from Unit 9, 92 Barkly Street



Tree view from Unit 7, 92 Barkly St



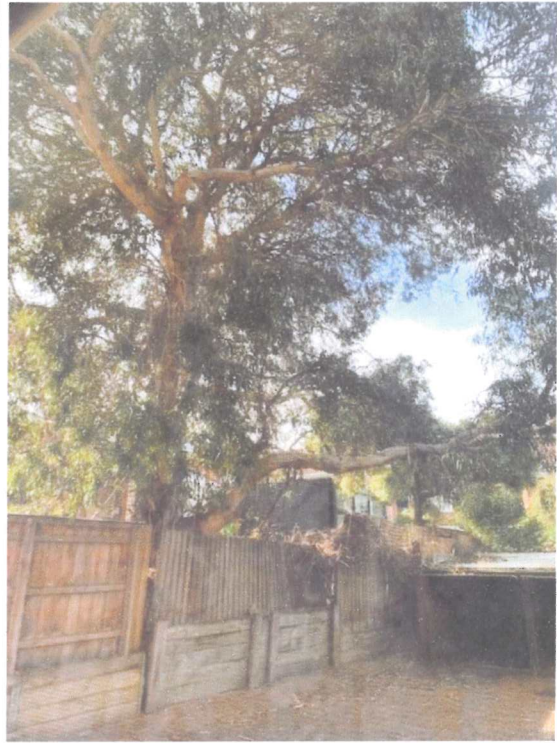
Tree view from Unit 5, 92 Barkly Street



Tree view from Backyard, 92 Barkly Street



Tree view from Unit 3, 92 Barkly St



Tree view from Unit 1, 92 Barkly Street

