

Councillor Question Time

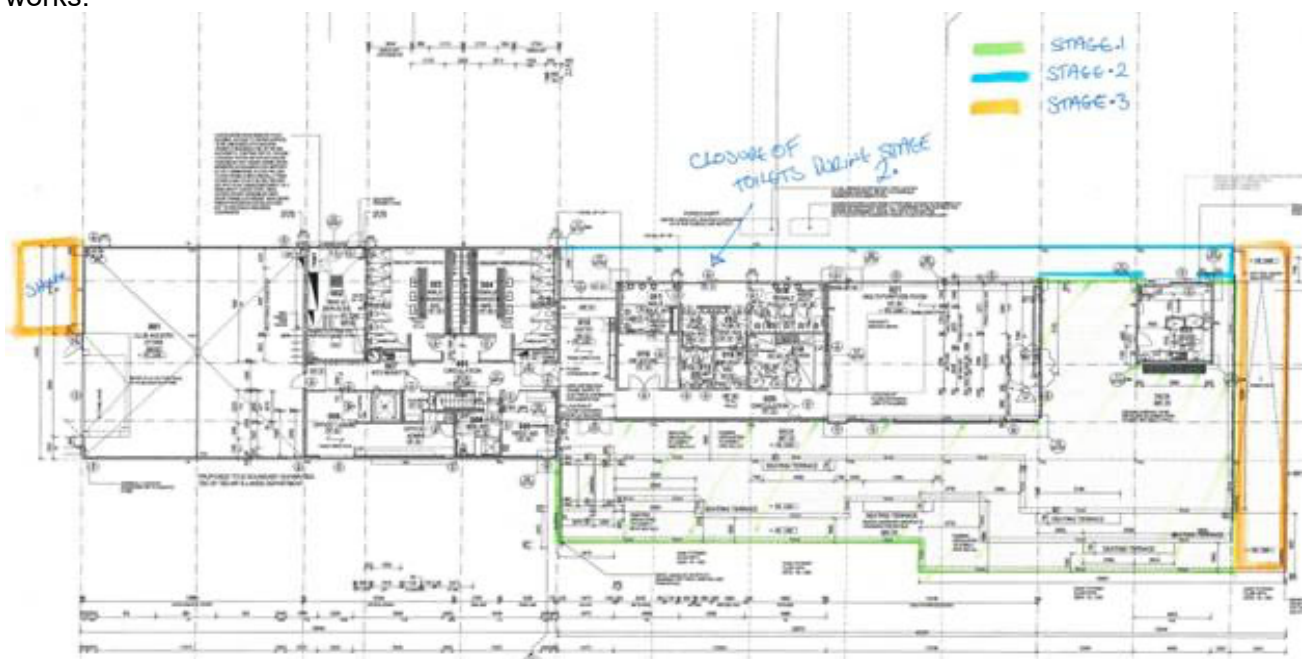
Question from Councillor Pearl:

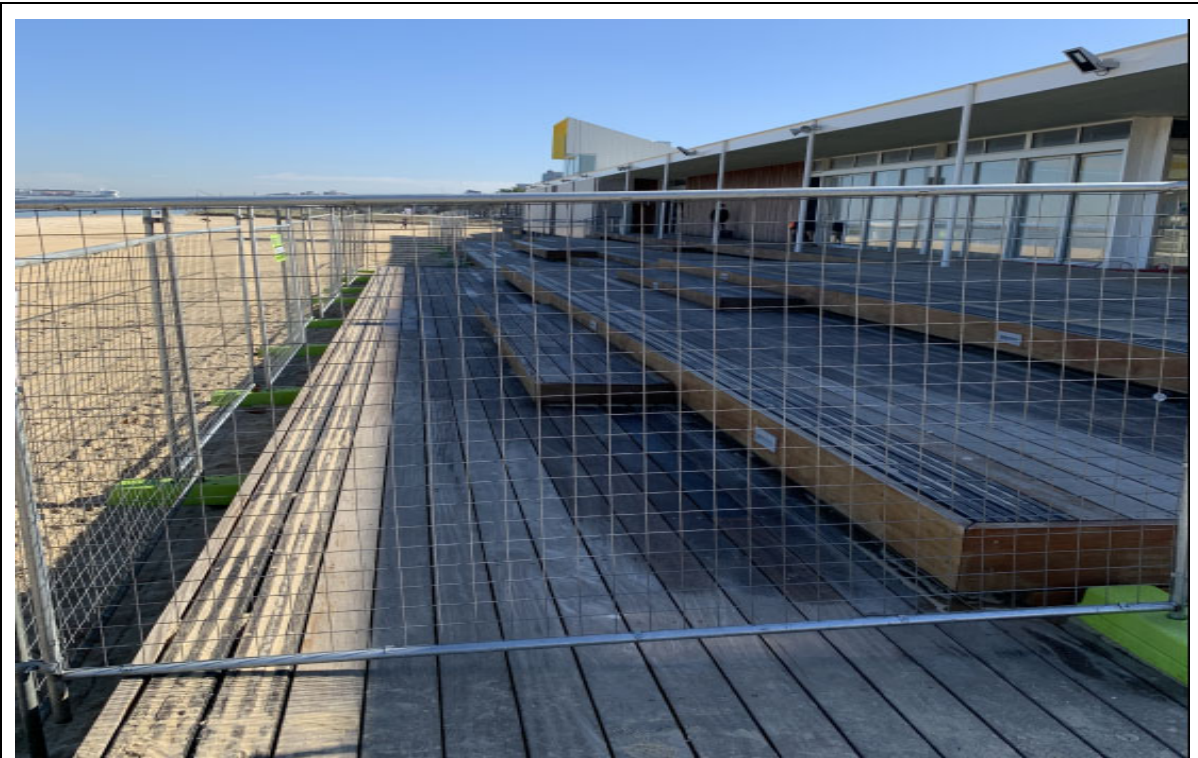
Can officers explain reports of a fence that has been placed around the South Melbourne Life Saving Club?

Response:

A fence has been erected at the SMLSC in preparation for planned renewal works of the wooden decking to keep it in a safe and serviceable condition for use in a high foot traffic area as part of Council's ongoing commitment to asset renewal.

Works are intended to be carried out in three distinct sections in order to minimise the impact and inconvenience of the works, while Council is actively communicating with the lifesaving club to plan and deliver these works. Signage is present on-site to inform the public of the works.





Stage One Fencing



Stage One fencing with Works Notification letters

**Please note: answers to any questions during Councillor Question Time which were answered at the meeting are included in the minutes of that meeting.*