

Kings Place Plaza South Melbourne

Cobden Road Pocket Park Landscape Concept Design

Prepared for City of Port Phillip



Introduction

Phase 1 of the Kings Place Plaza precinct will include the Cobden Road Pocket Park.

This phase of the project includes -

- Closing of access through Cobden Road to Kings Place
- The create of an open space at the intersection of Kings Place and Cobden Road
- Review of the southern kerbline of Kings Place
- Early tree planting
- Public lighting within open space



View looking south west along Cobden Street



View looking east along Kings Place



Figure 1: Domain Precinct plan Sourced from City of Port Phillip Domain Precinct Public Realm Masterplan

Drawing Title

Project Name

Drawing No.

Revision

Date

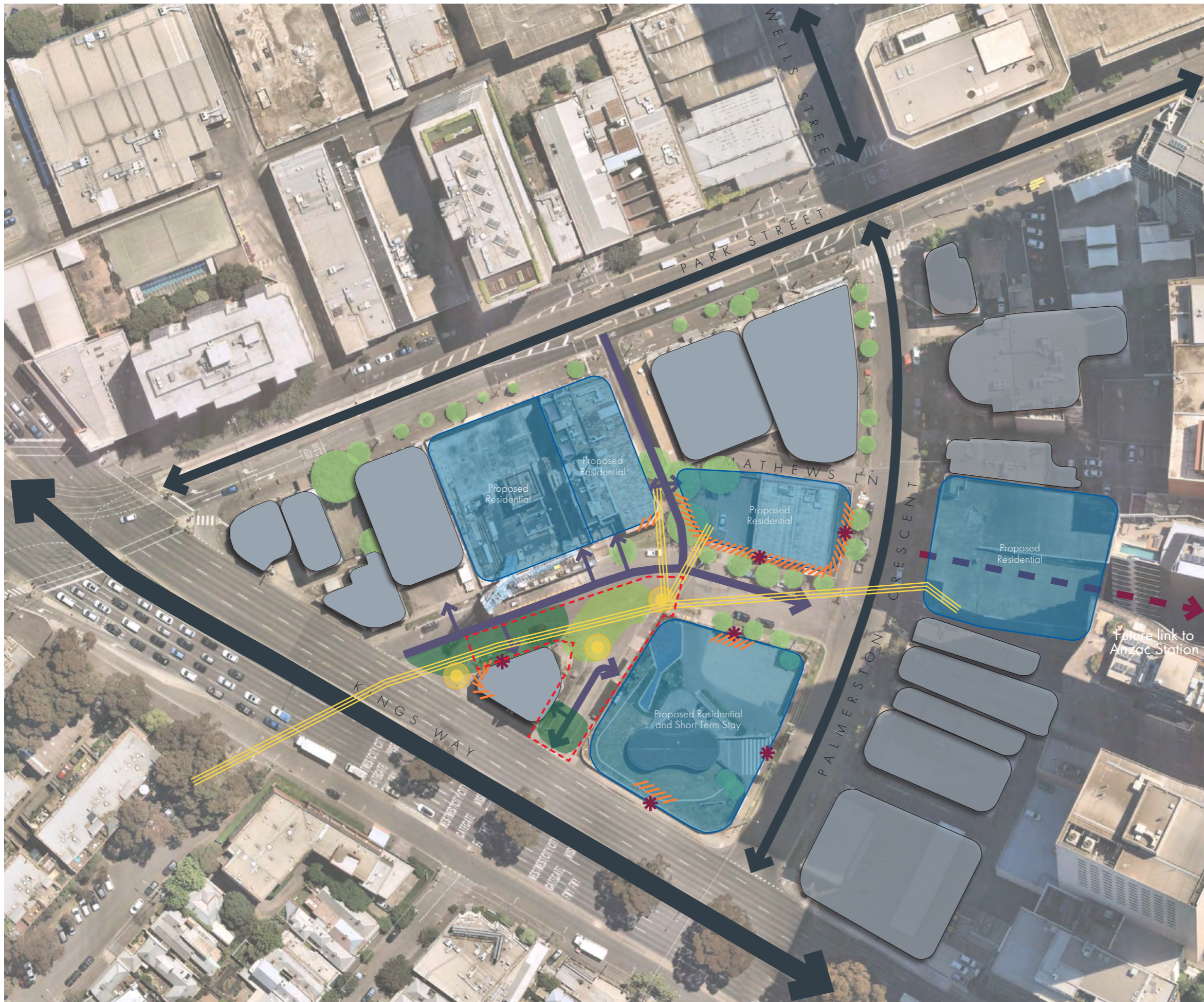
Drawn

Checked

Project Principal

Scale





Legend

- Major Roadway
- Minor Roadway
- One way streets
- Driveways
- Existing buildings
- Proposed building footprint
- Existing trees
 - Trees could be retained to provide initial tree maturity
- Active frontages
 - Opportunity for cafe seating
 - internal/external connection
- Open green space
 - Community gathering space
 - Planting of large feature trees
- Treed spaces
 - buffer tree planting the screen Kings Way
- Maximum sunlight
 - Community gathering space
 - Provide shelter for uses
- Pedestrian access
 - Building entrances will require links to the public realm
- Future Pedestrian access
 - Co-ordinate connection to future Anzac Station
- Overhead Powerline

Drawing Title	Project Name	Drawing No.	Revision	Date	Drawn	Checked	Project Principal	Scale
Landscape Opportunities	Kings Place Plaza Opportunities and Constraints	320-0763-00-L-01-DR02	03	14.04.2021	EC	ML	JG	1:1000 (A3)



Legend

-  Existing trees
-  *Ulmus Parvifolia*
-  Evergreen: *Calodendron capense* or *angophora costata*
-  Deciduous: *Quercus phellos*
-  *Eucalyptus viminalis* subsp. *pyroriana*

Informal planting
- native character
- connected canopy

LED lighting under seating

Central lawn and insitu concrete seats

Lightpoles within garden beds



Drawing Title	Project Name	Drawing No.	Revision	Date	Drawn	Checked	Project Principal	Scale
---------------	--------------	-------------	----------	------	-------	---------	-------------------	-------





Adjacent Building Existing footpath and naturestrip Existing Carriageway with on street parking Feature trees and understorey planting Footpath Adjacent Building

Section AA - Kings Place



Adjacent building Footpath Carriageway Proposed planter and street tree Pedestrian space Adjacent building

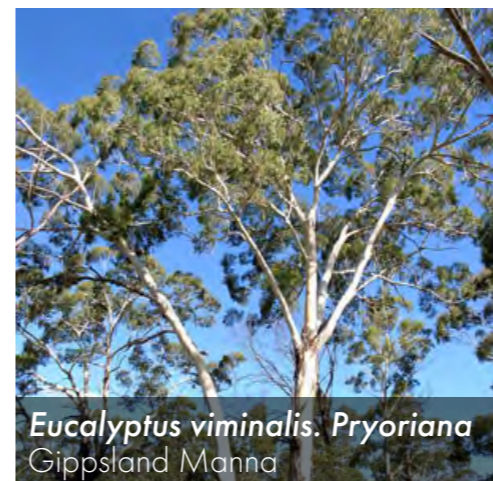
Section BB - Cobden Street

Tree Palette

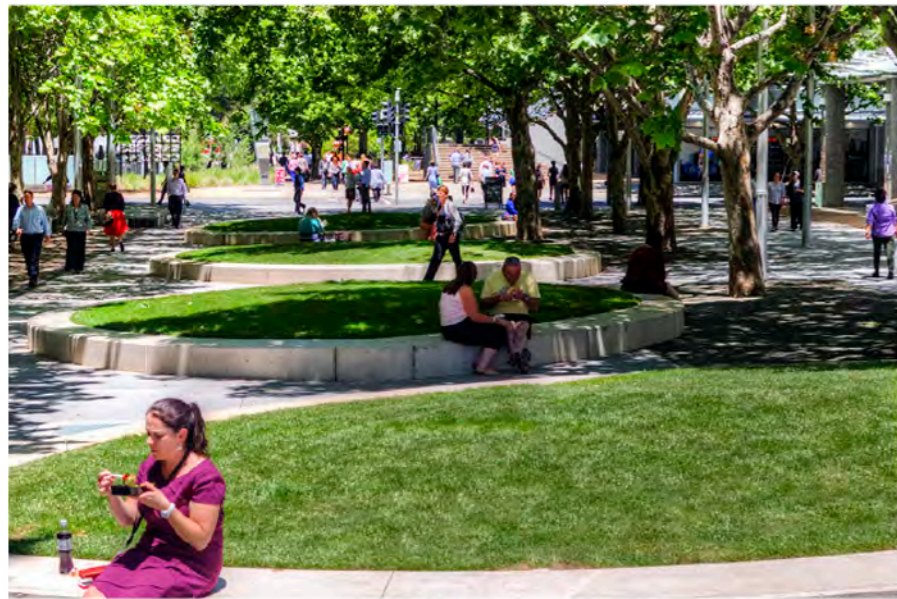
The proposed plant schedule consists of hardy and attractive plants suited to the local conditions. The palette comprised a mixture of native and exotic species.

Note: All trees have been chosen from the Domain Tree Planting Palette 2019
Subject to design development, additional species may be utilised.

Botanic Name	Common Name	Height	Spread	Quantity
Trees - Streetscape				
<i>Eucalyptus viminalis</i> subsp. <i>Pryoriana</i>	Gippsland Manna	8-16m	5m	
<i>Phoenix canariensis</i>	Canary Island Date Palm	16m	10m	
<i>Pyrus calleryana</i> 'capital'	Ornamental Pear	11m	3m	
<i>Ulmus parvifolia</i>	Chinese Elm	13m	10m	



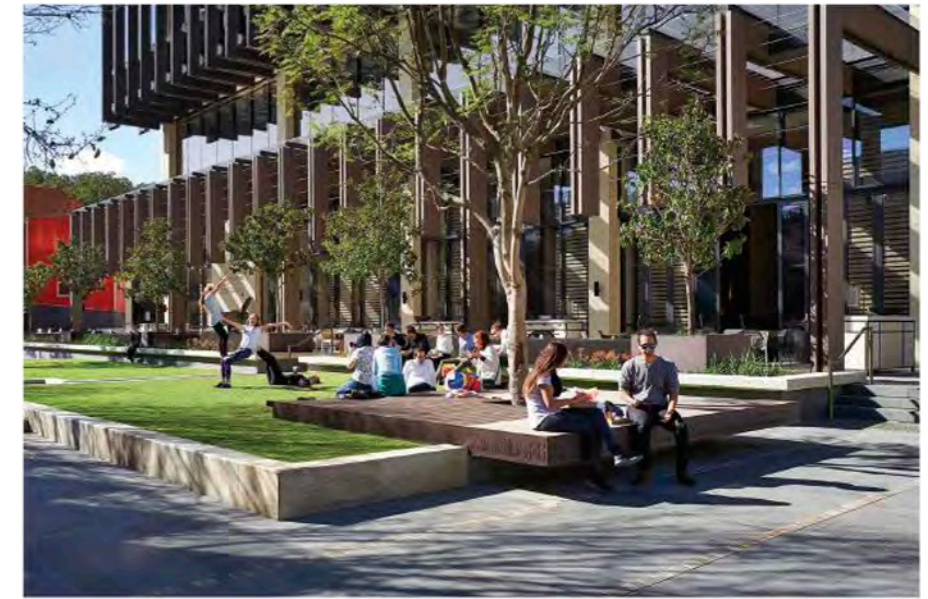
Drawing Title	Project Name	Drawing No.	Revision	Date	Drawn	Checked	Project Principal	Scale
Drawing Title	Kings Place Plaza Opportunities and Constraints	320-0763-00-L-01-DR02	03	14.04.2021	EC	ML	JG	



Opportunity for large evergreen trees to create natural shade, strengthen the green link from Albert Park to Kings Domain and create a new 'ceiling' to introduce a human scale



Concrete seating with open grassed space



Seating/edge treatment to mitigate level changes between buildings

Drawing Title	Project Name	Drawing No.	Revision	Date	Drawn	Checked	Project Principal	Scale
Precedent Imagery	Kings Place Plaza Opportunities and Constraints	320-0763-00-L-01-DR02	03	14.04.2021	EC	ML	JG	

Legend

-  Existing trees
-  *Ulmus Parvifolia*
-  Evergreen: *Calodendron capense* or *angophora costata*
Deciduous: *Quercus phellos*
-  *Eucalyptus viminalis* subsp. *pyroriana*

- Informal planting
- native character
- connected canopy
- LED lighting under seating
- Central lawn and insitu concrete seats
- Lightpoles within garden beds



Additional tree planting to north side of Kings Place

Additional (island) planters next to existing kerb line with parking in-between

Opportunity for narrow planter and medium size trees

Area of roadway converted into new open space

Sculptural terrain play elements

Laneway reduced to one way car access

Curved seating wrapping around building retaining wall

Central Plaza and meeting place

Drawing Title

Project Name

Drawing No.

Revision Date

Drawn

Checked

Project Principal

Scale



Contact Tract

Office

Level 6, 6 Riverside Quay

Southbank VIC 3006

03 9429 6133

melbourne@tract.net.au